

# **Bentley Motors Limited – UK Retailer Network**

## **Qualifying Explanatory Statement in support of the Achievement of and ongoing commitment to carbon neutrality**

Application Period: 1 January 2021 – 31 December 2021

**Date:** 04.07.2023

# 1. Executive Summary

This document is the Qualifying Explanatory Statement (QES) which provides collected evidence in support of the declaration that Bentley Motors Limited:

1. has achieved carbon neutrality for its UK Retailer Network for the period commencing 1 January 2021 to 31 December 2021 (see Section 3); and
2. is committed to maintaining carbon neutrality for its UK Retailer Network (see section 4).

The carbon neutrality declaration has been made and the collected supporting evidence has been provided in accordance with the requirements prescribed by PAS 2060:2014 – Specification for the demonstration of carbon neutrality.

Richard Leopold

Regional Director – UK

July 2023

## 2. General information

PAS 2060 Requirement	Information Relating to the Carbon Neutral Declaration
<b>Entity making PAS 2060 declaration:</b>	Bentley Motors Limited
<b>Subject of PAS 2060 declaration:</b>	Bentley Motors Limited has facilitated the certification of its UK retailer network consisting of twenty (20) independently franchised retailers.
<b>Description of Subject:</b>	<p>Bentley Motors Limited is a manufacturer and developer of luxury vehicles. Bentley has 20 independently franchised retailers who act as Sales and After Sales points across the United Kingdom and the Crown Dependencies. They are:</p> <ol style="list-style-type: none"> <li>1. Jack Barclay – London</li> <li>2. Bentley Sussex</li> <li>3. Bentley Leicester</li> <li>4. Bentley Manchester</li> <li>5. Bentley Leeds</li> <li>6. Bentley Glasgow</li> <li>7. Bentley Surrey</li> <li>8. Bentley Birmingham</li> <li>9. Bentley Edinburgh</li> <li>10. Bentley St Peter</li> <li>11. Bentley Hampshire</li> <li>12. Bentley Newcastle</li> <li>13. Bentley Cambridge</li> <li>14. Bentley Hatfield</li> <li>15. Bentley Bristol</li> <li>16. Bentley Tunbridge Wells</li> <li>17. Bentley Douglas</li> <li>18. Bentley Berkshire</li> <li>19. Bentley Chelmsford</li> <li>20. Bentley Belfast</li> </ol>
<b>Rationale for selection of the subject:</b>	<p>The subject was selected given it represents the operational control boundary of Bentley Motors as defined by GHG Protocol Corporate Accounting and Reporting Standard (including supplementary Scope 2 guidance) The operational boundary includes emissions required to be certified to PAS2060, which forms of:</p> <p>Scope 1 emissions:</p> <ul style="list-style-type: none"> <li>- Combustion of gas</li> <li>- Combustion of fuel for transport purposes</li> </ul>

	<ul style="list-style-type: none"> <li>- Refrigerants</li> <li>- Burning oil</li> <li>- Gas oil</li> </ul> <p>Scope 2 emissions:</p> <ul style="list-style-type: none"> <li>- Purchased electricity (location-based)</li> <li>- Purchased electricity (market-based)</li> </ul>
<b>Control approach:</b>	Operational Control
<b>Type of conformity assessment:</b>	dent third-party certification (see Appendix 2)
<b>Baseline date for PAS 2060 programme:</b>	1 January 2020 – 31 December 2020
<b>Individuals responsible for evaluation and provision of data necessary for declaration:</b>	<p>James Haywood</p> <p>Retailer Marketing Manager – UK</p>

### 3. Declaration of achievement to carbon neutrality

PAS 2060 Requirement	Information Relating to the Carbon Neutral Declaration
<b>Declaration of achievement:</b>	Carbon neutrality of the UK Retailer Network achieved by Bentley Motors Limited in accordance with PAS 2060 at July 2023 for the period commencing 1 January 2021 – 31 December 2021, certified by the Carbon Trust.
<b>Recorded carbon footprint of the subject during the period stated above</b>	2,251.12 tCO <sub>2e</sub> (location-based); (0.18 tCO <sub>2e</sub> /m <sup>2</sup> ) 2,576.49 tCO <sub>2e</sub> (market-based); (0.21 tCO <sub>2e</sub> /m <sup>2</sup> ) (1 January 2021 – 31 December 2021) See Annex 1 for further details.
<b>Carbon footprint reduction target for period</b>	2020 Baseline: 2,228.48 tCO <sub>2e</sub> (location-based); (0.20 tCO <sub>2e</sub> /m <sup>2</sup> ) (1 January 2020 – 31 December 2020) See Annex 2 for further details 2021 Target: Achieve an overall intensity-based decrease versus 2020 Baseline
<b>Carbon footprint reduction achieved for period</b>	Absolute increase of 22.64 tCO <sub>2e</sub> , intensity-based decrease of (0.02 tCO <sub>2e</sub> /m <sup>2</sup> ). See section 3.3 for further details.
<b>Carbon offsets purchased</b>	2,263 (tCO <sub>2e</sub> ) See Annex 3 for further details.

#### 3.1. Carbon footprint methodology

PAS 2060 Requirement	Information Relating to the Carbon Neutral Declaration
<b>Description of the standard and methodology used to determine GHG emissions and reductions</b>	<p>The methodology for calculating the carbon footprint was as follows:</p> <p>The operational boundary of analysis included all the scope 1 (fuel combustion, owned transport, process emissions and fugitive emissions) and scope 2 (purchased electricity, heat, and steam) emissions of Bentley's UK Retailer Network.</p> <ul style="list-style-type: none"> <li>All the emissions were calculated using primary data. The overall data quality for the project was good, mainly because all the data came from invoices provided by each dealership's internal accounting systems. The authenticity of this data was checked and verified through a query log and email communications with our external consultancy, the Carbon Trust. Interviews were undertaken</li> </ul>

	<p>for our highest emitting retailer to review source data as well as the wider systems of data collection and how the data is managed.</p> <ul style="list-style-type: none"> <li>• To calculate scope 1 emissions, activity data was collected for each site and multiplied by the relevant emission factor (sourced from 2021 BEIS) to generate a footprint figure in tCO<sub>2</sub>e. For scope 2 emissions, a location-based approach was used, and the emissions factor reflects the UK’s “grid average”.</li> </ul> <p>This methodology was developed to be in accordance with the requirements of GHG Protocol Corporate Accounting and Reporting Standard (including supplementary Scope 2 guidance).</p> <p>The provisions of the methodology for calculating the carbon footprint were applied as detailed and the principles set out in PAS 2060 were met.</p> <p>In consideration of 2020 data being used as the baseline for initial certification, it must be noted that due to the impact of the COVID-19 pandemic - and resultant shut down of all UK retailer businesses during the period (from 26.03.20 to 01.06.20 and 05.11.20 to 02.12.20) – the calculated footprint cannot be considered representative of a “typical” trading year and hence this must be considered during recertification.</p> <p>There are also local lockdown measures that are not included in the above timings that affected some retailers such as Leicester. To tackle this and ensure the baseline footprint can be appropriately compared in the future, intensity metrics were developed, as outlined in the section above.</p>
<p><b>Justification for the selection of the methodologies chosen</b></p>	<p>The methodology used in the current footprint is consistent with the internationally recognised GHG Protocol Corporate Accounting and Reporting Standard.</p> <p>Scope 3 emissions were omitted this year as there was a lack of obtainable scope 3 data as well as knowledge of the ISO process to include scope 3 this year-round.</p>

### 3.2. Carbon footprint

Carbon Footprint <i>(for latest footprinting year)</i>	Information Relating to the Carbon Neutral Declaration
<b>Total Carbon Footprint</b>	<p><b>Location-based:</b> 2,251.12 tCO<sub>2</sub>e (0.18 tCO<sub>2</sub>e/m<sup>2</sup>)</p> <p><b>Market-based:</b> 2,576.49 tCO<sub>2</sub>e (0.21 tCO<sub>2</sub>e/m<sup>2</sup>)</p> <p>See Annex 1 for further details.</p>
<b>Carbon Footprint Breakdown by Scope</b>	<p><b>Location-based:</b></p> <p>Scope 1: 1,540.66 tCO<sub>2</sub>e</p> <p>Scope 2: 710.45 tCO<sub>2</sub>e</p> <p><b>Market-based:</b></p> <p>Scope 1: 1,540.66 tCO<sub>2</sub>e</p> <p>Scope 2: 1,035.83 tCO<sub>2</sub>e</p> <p>See Annex 1 for further details.</p>

### 3.3. Carbon reduction

PAS 2060 Requirement	Information Relating to the Carbon Neutral Declaration
<b>Reductions achieved</b>	<p>The carbon footprint reductions between the current carbon footprint (see section 3.2) and the baseline period are as follows:</p> <ul style="list-style-type: none"> <li>• Absolute increase: 22.64 tCO<sub>2</sub>e</li> <li>• Intensity reduction: 0.02 tCO<sub>2</sub>e / m<sup>2</sup></li> <li>• Percentage absolute increase: 1.02%</li> <li>• Percentage intensity reduction: 8.71%</li> </ul> <p>The reduction assessment covers location-based emissions only. Market-based was not calculated during the baseline period.</p>
<b>Baseline period</b>	Calendar Year 2020: 01/01/2020 – 31/12/2020
<b>Supporting information</b>	<p>For the full calendar year of 2021, there was a percentage intensity reduction in emissions of 8.71% across the entire Bentley retailer network of 20 retailer sites. This was achieved by implementing a wide number of initiatives across all sites to reduce energy consumption and implement broader sustainability initiatives. These were delivered with each retailer site focusing on 3 new core initiatives for 2021, as well as continuing to build on initiatives already delivered during the baseline year of 2020.</p> <p>However, there was an absolute percentage increase in emissions of 1.02% across the entire Bentley retailer network of 20 retailer sites for 2021. This can be attributed to the increase in operational activity as</p>

	retailer's began to fully return to 'normal' opening hours with the lifting of Covid restrictions across the UK.
<b>Confirmation that there has been no change to the definition of the subject</b>	There has been no change in the definition of the subject.
<b>Description of the means by which reductions have been achieved and any applicable assumptions or justifications</b>	Each of Bentley's 20 retailer site have completed a Carbon reduction plan for the year 2021. This plan consisted of a wide range of initiatives designed to reduce the overall emissions output of each business, plus looking at reducing waste in areas such as water and packaging. Additionally, individual behavioural changes have been encouraged to foster collective responsibility of delivery on these goals. Plus every retailer colleague has also completed a Sustainability Training module online via Bentley's 'eAcademy' online training platform.

### 3.4. Carbon offsets

PAS 2060 Requirement	Information Relating to the Carbon Neutral Declaration
<b>Offset methodology</b>	A sufficient number of offsets have been purchased by each Retailer of the required quality according to PAS2060 from Climate Impact Partners a profit for purpose organisation specialising in carbon offsetting services for corporates.
<b>Offset Confirmation</b>	<p>The offsets generated represent genuine, additional GHG emission reductions elsewhere. Projects involved in delivering offsets meet the criteria of additionally, permanence, leakage and double counting. Carbon offsets are verified by an independent third-party verifier. The credits from the selected carbon offset projects are:</p> <ul style="list-style-type: none"> <li>• only issued after the emission reduction has taken place.</li> <li>• retired within 12 months from the date of the declaration of achievement.</li> <li>• supported by publicly available project documentation on a registry which provides information about the offset project, quantification methodology and validation and verification procedures.</li> <li>• stored and retired in an independent and credible registry.</li> </ul>
<b>Offsets</b>	Full details of the carbon offsets included in making this declaration are provided in Annex 3.



## 4. Declaration of ongoing commitment to carbon neutrality

PAS 2060 Requirement	Information Relating to the Carbon Neutral Declaration
Declaration of on-going commitment:	<p>Bentley Motors Limited commits to maintain carbon neutrality for the UK Retailer Network in accordance to PAS 2060 for the period 01/01/2020 – 31/12/2030.</p> <p>Carbon neutrality for the UK Retailer Network for the period 01/01/2022 – 31/12/2022 will be achieved by March 2024, and for the total period 01/01/2020 – 31/12/2030 by 2031.</p>

### 4.1. Carbon management plan

PAS 2060 Requirement	Information Relating to the Carbon Neutral Declaration
Targets for GHG reduction for the defined subject appropriate to the timescale for achieving carbon neutrality	<p>Bentley Motors Limited will facilitate a recommended and targeted carbon reduction plan for each of its twenty (20) retailers. As each business is independently owned and operated, these carbon reduction actions will vary. Actions are based on Bentley's recommendations – retailers must commit to a minimum of 3 actions per year to reduce their emissions to a level lower than the year before. Equivalent alternatives can be developed by retailers and approved by Bentley. Targets are voluntarily set by each retailer site. Minimum reduction target will be set at 5% annually.</p> <p>Full details of reduction targets are provided in Annex 2.</p>
Planned means of achieving and maintaining GHG emissions reduction	<p>Bentley Motors Limited will work with each retailer on a targeted reduction plan which will include but not limited to:</p> <ul style="list-style-type: none"> <li>• A switch or move to the purchase of Green Energy (where feasible) from accredited suppliers. This will include the purchase of electricity and gas (where applicable) via Green tariffs where available. Currently, 50% of retailers are on Green Energy tariff. Objective to switch to green energy tariffs by 2024.</li> <li>• A plan of recommended actions per year for retailers has been provided in the back up for this document, including switching to green energy tariffs, and move from petrol to hybrid / electric powertrains for demonstrator and fleet vehicles. As mentioned above, this is a list for retailers to choose from but is not limited to these actions. Alternative actions may be developed by each business individually to reduce emissions. These plans will be an evolution of the previous 12 months plans for 2022.</li> <li>• A comprehensive training plan will be rolled out to all Retailer employees to increase engagement and awareness of Sustainability during 2023. Training will cover a staged approach from general awareness and importance to operational 'toolkits' for retailers to use per business area that offer practical insights into where measures can be taken to reduce emissions. This training programme will be facilitated by</li> </ul>

	<p>Bentley's official Retailer Academy with the ability to track attendance and completion of the course.</p> <ul style="list-style-type: none"> <li>• Consideration should also be given in case of the relocation of Retailer facilities in the intervening 12 months as part of the re-certification process. This includes brand new site premises for the retailers based at Hatfield and High Wycombe.</li> </ul>
<p>The offset strategy to be adopted</p>	<p>A sufficient number of offsets will be purchased by each Retailer of the required quality according to PAS2060 from Climate Impact Partners, a profit for purpose organisation specialising in carbon offsetting services for corporates for any residual emissions in the intervening 12 months.</p>

# Annex of Qualifying Explanatory Statement

## Annex 1: Greenhouse gas emissions summary

### A1.1 Carbon footprint details

Carbon Footprint <i>(for latest footprinting year)</i>	Information Relating to the Carbon Neutral Declaration
<b>Total Carbon Footprint</b>	<b>Location-based:</b> 2,251.12 tCO <sub>2</sub> e (0.18 tCO <sub>2</sub> e/m <sup>2</sup> ) <b>Market-based:</b> 2,576.49 tCO <sub>2</sub> e (0.21 tCO <sub>2</sub> e/m <sup>2</sup> )
<b>Carbon Footprint Breakdown by Scope</b>	<b>Location-based:</b> Scope 1: 1540.66 tCO <sub>2</sub> e Scope 2: 710.45 tCO <sub>2</sub> e <b>Market-based:</b> Scope 1: 1540.66 tCO <sub>2</sub> e Scope 2: 1035.83 tCO <sub>2</sub> e
<b>Scope 1 – Direct GHG Emissions:</b>	Natural Gas: 605.00 tCO <sub>2</sub> e Fuels (owned vehicles): 726.36 tCO <sub>2</sub> e Fuels (stationary equipment): 97.47 tCO <sub>2</sub> e Fugitive emissions: 111.84 tCO <sub>2</sub> e
<b>Scope 2 – Energy Indirect Emissions:</b>	<b>Location-based:</b> Imported Electricity: 710.45 tCO <sub>2</sub> e <b>Market-based:</b> Imported Electricity: 1035.83 tCO <sub>2</sub> e
<b>Exclusions</b>	Scope 3 emissions was omitted as there is a lack of obtainable Scope 3 data throughout the Bentley retailer network to provide an assessment based on this criteria.

### A1.3 Emissions Overview by Dealership:

Scope	Dealership	Emission source
<b>Scope 1 – Direct GHG Emissions (tCO<sub>2</sub>e)</b>	Jack Barclay	Gas: 178.98 Company Fleet: N/A Demonstrator Fleet: 178.01 Other Fuel: N/A

		Fugitive: 4.79
	Bentley Sussex	Gas: N/A Company Fleet: 11.66 Demonstrator Fleet: 14.82 Other Fuel: 90.21 Fugitive: 3.46
	Bentley Leicester	Gas: 116.20 Company Fleet: 119.30 Demonstrator Fleet: N/A Other Fuel: N/A Fugitive: 12.14
	Bentley Manchester	Gas: 77.26 Company Fleet: 104.28 Demonstrator Fleet: 2.88 Other Fuel: N/A Fugitive: 10.18
	Bentley Leeds	Gas: 21.42 Company Fleet: 7.10 Demonstrator Fleet: 3.13 Other Fuel: 2.21 Fugitive: 8.78
	Bentley Glasgow	Gas: 17.19 Company Fleet: N/A Demonstrator Fleet: 87.20 Other Fuel: N/A Fugitive: 4.94
	Bentley Surrey	Gas: 42.75 Company Fleet: N/A Demonstrator Fleet: 4.85 Other Fuel: N/A Fugitive: 6.43
	Bentley Birmingham	Gas: 0.29 Company Fleet: 5.93 Demonstrator Fleet: N/A Other Fuel: N/A Fugitive: 5.27

	Bentley Edinburgh	Gas: 4.58 Company Fleet: N/A Demonstrator Fleet: 8.01 Other Fuel: N/A Fugitive: 3.68
	Bentley St Peter	Gas: 0.08 Company Fleet: N/A Demonstrator Fleet: N/A Other Fuel: N/A Fugitive: 2.55
	Bentley Hampshire	Gas: N/A Company Fleet: 11.36 Demonstrator Fleet: 7.46 Other Fuel: N/A Fugitive: 4.53
	Bentley Newcastle	Gas: 15.85 Company Fleet: 3.09 Demonstrator Fleet: 4.25 Other Fuel: N/A Fugitive: 8.58
	Bentley Cambridge	Gas: 3.37 Company Fleet: 0.80 Demonstrator Fleet: N/A Other Fuel: N/A Fugitive: 4.45
	Bentley Hatfield	Gas: 29.95 Company Fleet: N/A Demonstrator Fleet: 41.48 Other Fuel: N/A Fugitive: 2.04
	Bentley Bristol	Gas: 10.77 Company Fleet: 7.38 Demonstrator Fleet: 10.91 Other Fuel: N/A Fugitive: 7.27
	Bentley Tunbridge Wells	Gas: 42.36

		Company Fleet: 4.98 Demonstrator Fleet: 2.82 Other Fuel: N/A Fugitive: 8.02
	Bentley Douglas	Gas: 0.08 Company Fleet: N/A Demonstrator Fleet: N/A Other Fuel: N/A Fugitive: 1.84
	Bentley Berkshire	Gas: 31.36 Company Fleet: 17.73 Demonstrator Fleet: 24.31 Other Fuel: 5.05 Fugitive: 6.02
	Bentley Essex (Chelmsford)	Gas: N/A Company Fleet: 5.74 Demonstrator Fleet: 4.32 Other Fuel: N/A Fugitive: 3.23
	Bentley Belfast	Gas: 12.50 Company Fleet: 7.00 Demonstrator Fleet: 25.54 Other Fuel: N/A Fugitive: 3.64
<b>Scope 2 – Indirect Emissions from Energy (tCO<sub>2</sub>e)</b>	Jack Barclay	Purchased Electricity (location-based): 128.87 Purchased Electricity (market-based): 240.59
	Bentley Sussex	Purchased Electricity (location-based): 30.30 Purchased Electricity (market-based): 41.66
	Bentley Leicester	Purchased Electricity (location-based): 130.76 Purchased Electricity (market-based): 244.11

	Bentley Manchester	Purchased Electricity (location-based): 9.06 Purchased Electricity (market-based): 16.91
	Bentley Leeds	Purchased Electricity (location-based): 38.11 Purchased Electricity (market-based): 71.15
	Bentley Glasgow	Purchased Electricity (location-based): 33.04 Purchased Electricity (market-based): 0.00
	Bentley Surrey	Purchased Electricity (location-based): 27.50 Purchased Electricity (market-based): 51.33
	Bentley Birmingham	Purchased Electricity (location-based): 2.60 Purchased Electricity (market-based): 4.86
	Bentley Edinburgh	Purchased Electricity (location-based): 26.76 Purchased Electricity (market-based): 49.96
	Bentley St Peter	Purchased Electricity (location-based): 3.73 Purchased Electricity (market-based): 6.96
	Bentley Hampshire	Purchased Electricity (location-based): 34.71 Purchased Electricity (market-based): 48.37
	Bentley Newcastle	Purchased Electricity (location-based): 32.16 Purchased Electricity (market-based): 60.04
	Bentley Cambridge	Purchased Electricity (location-based): 28.75

		Purchased Electricity (market-based): 53.68
	Bentley Hatfield	Purchased Electricity (location-based): 17.96 Purchased Electricity (market-based): 33.53
	Bentley Bristol	Purchased Electricity (location-based): 26.84 Purchased Electricity (market-based): 0.00
	Bentley Tunbridge Wells	Purchased Electricity (location-based): 56.95 Purchased Electricity (market-based): 23.58
	Bentley Douglas	Purchased Electricity (location-based): 12.78 Purchased Electricity (market-based): 23.86
	Bentley Berkshire	Purchased Electricity (location-based): 36.82 Purchased Electricity (market-based): 53.68
	Bentley Essex (Chelmsford)	Purchased Electricity (location-based): 27.93 Purchased Electricity (market-based): 11.56
	Bentley Belfast	Purchased Electricity (location-based): 4.80 Purchased Electricity (market-based): 0.00
	Jack Barclay	Location-based: 490.65 Market-based: 602.37
	Bentley Sussex	Location-based: 150.45 Market-based: 161.81
	Bentley Leicester	Location-based: 378.40 Market-based: 491.75
	Bentley Manchester	Location-based: 203.67 Market-based: 211.52



<b>Total Scope 1&amp;2 (tCO<sub>2</sub>e)</b>	Bentley Leeds	Location-based: 80.75 Market-based: 113.78
	Bentley Glasgow	Location-based: 142.37 Market-based: 109.33
	Bentley Surrey	Location-based: 81.54 Market-based: 105.37
	Bentley Birmingham	Location-based: 14.09 Market-based: 16.34
	Bentley Edinburgh	Location-based: 43.04 Market-based: 66.24
	Bentley St Peter	Location-based: 6.36 Market-based: 9.59
	Bentley Hampshire	Location-based: 58.08 Market-based: 71.73
	Bentley Newcastle	Location-based: 63.93 Market-based: 91.81
	Bentley Cambridge	Location-based: 37.37 Market-based: 62.30
	Bentley Hatfield	Location-based: 91.43 Market-based: 107.00
	Bentley Bristol	Location-based: 63.16 Market-based: 36.32
	Bentley Tunbridge Wells	Location-based: 115.14 Market-based: 81.76
	Bentley Douglas	Location-based: 14.70 Market-based: 25.78
	Bentley Berkshire	Location-based: 121.29 Market-based: 138.15
	Bentley Essex (Chelmsford)	Location-based: 41.22 Market-based: 24.85
Bentley Belfast	Location-based: 53.49 Market-based: 48.69	

## Annex 3: Offsets

The below information relates to the compensation of residual emissions (i.e. offsetting):

The volume of emissions reduced or sequestered via carbon offsetting corresponds to the residual emissions of the products in question. As per the requirements of PAS2060, it has been confirmed the offsets have been retired on a public registry to avoid double accounting. The internal process for ensuring there is no double accounting of offsets is as follows:

Project name	Country	Project type	Standard	Type of credits	Generation period	Retirement date	Reference No. & link to registry	Offset volume (tCO <sub>2</sub> e)
Gyapa Efficient Cookstoves	Ghana	Clean Cooking	Gold Standard	Avoidance	2015-2022	The offsets will be retired within 6 months of certification by Climate Impact partners on behalf of Bentley for their UK Retailer Network certification.	GS407 - <a href="https://registry.goldstandard.org">GSF Registry (goldstandard.org)</a>	1,587
Bondhu Chula Stoves	Bangladesh	Clean Cooking	Gold Standard	Verified Emission Reductions (VERs)	2021 +		GS3112 <a href="https://registry.goldstandard.org">GSF Registry (goldstandard.org)</a>	339
Orb Household Solar	India	Energy Infrastructure	Gold Standard	Avoidance	2021 +		<a href="https://registry.goldstandard.org/projects/details/1349">https://registry.goldstandard.org/projects/details/1349</a>	337
<b>Total tonnes (tCO<sub>2</sub>e) offset</b>								<b>2,263</b>



Belfast CIP Offset - 2022



Berkshire CIP Offset - 2022



Birmingham CIP Offset - 2022



Bristol CIP Offset - 2022



Cambridge CIP Offset - 2022



Douglas CIP Offset - 2022



Edinburgh CIP Offset - 2022



Essex (Chelmsford) CIP Offset - 2022



Glasgow CIP Offset - 2022



Hampshire CIP Offset - 2022



Hatfield CIP Offset - 2022



Jack Barclay CIP Offset - 2022



Leeds CIP Offset - 2022



Leicester CIP Offset - 2022



Manchester CIP Offset - 2022



Newcastle CIP Offset - 2022



St Peter CIP Offset - 2022



Surrey CIP Offset - 2022



Sussex CIP Offset - 2022



Tunbridge Wells CIP Offset - 2022

## Annex 4: Independent third-party assurance



### Carbon Neutral Label

#### Bentley Motors Limited

has achieved carbon neutrality and is committed to on-going carbon neutrality of the total carbon footprint of its

#### Scope 1 & 2 of UK Retailer Network

Carbon Trust Assurance has certified that this company has met all of the requirements for using the Carbon Trust Carbon Neutral Label in relation to the 01 January 2021 – 31 December 2021 application period.



A full description of the scope of certification and a detailed list of certified results can be found in the associated Certification Letter CERT-13517.

Awarded: 01/11/2022

Valid Until: 31/10/2023

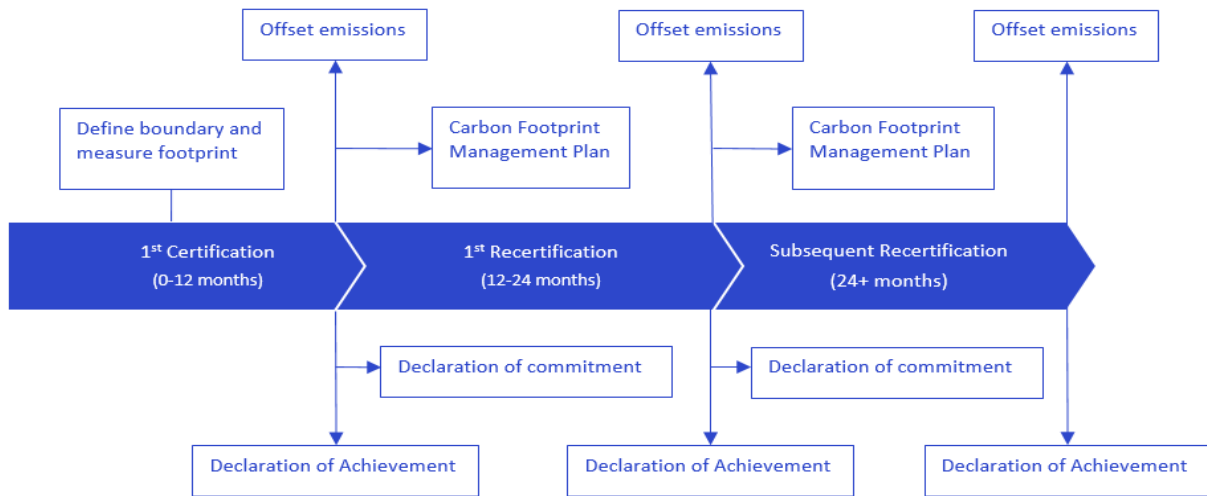
for and on behalf of Carbon Trust Assurance Ltd,

A handwritten signature in black ink, appearing to read "M Hockaday".

Martin Hockaday,  
Head of Assurance

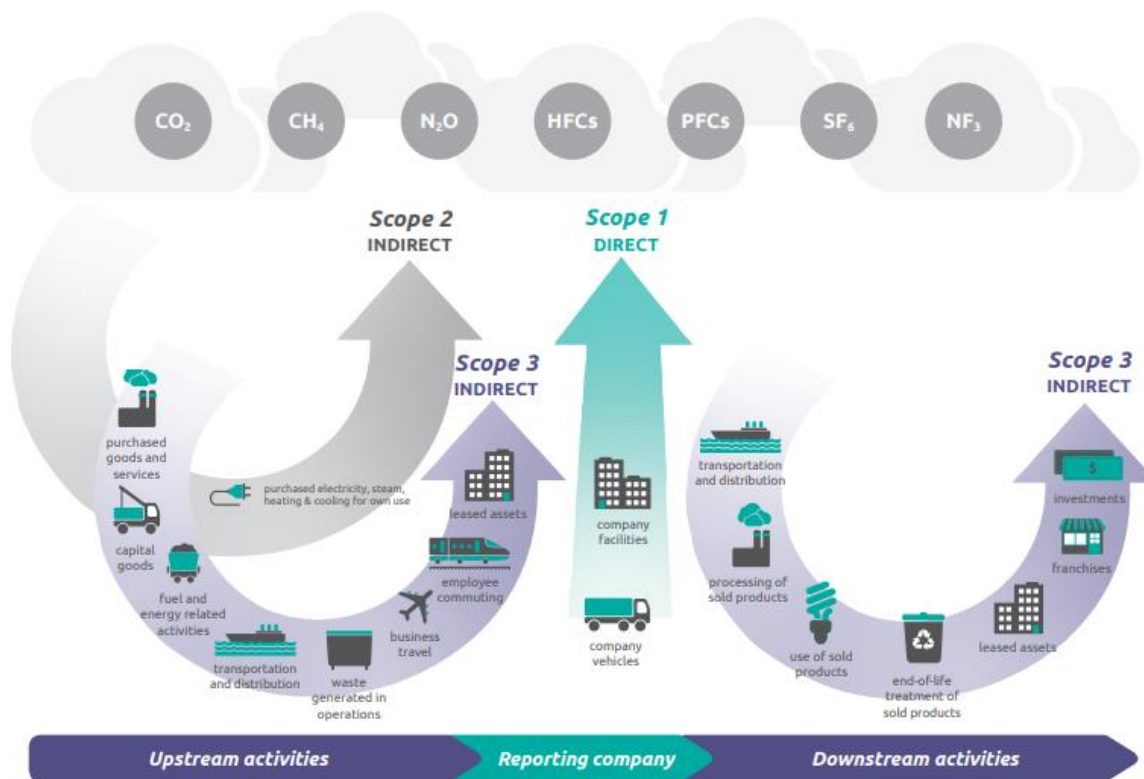
This certificate is for presentation purposes only. Please do not copy or circulate this certificate without the Certification Letter and associated Annexes where full details on the scope of the certification are documented. This certificate remains the property of Carbon Trust Assurance Limited and is bound by the conditions of the contract. Information and Contact: Carbon Trust Assurance Limited is registered in England and Wales under Company number 06547658 with its Registered Office at Level 5, Arbor, 255 Blackfriars Road, London SE1 9AX, UK. Telephone: +44 (0) 20 7 170 7000. Carbon Trust Assurance Limited is a fully owned subsidiary of the Carbon Trust.

# Annex 5: Additional supporting information for interested parties



**Figure 1. PAS 2060 certification process**

**Source:** Carbon Trust. Adapted from “BSI - PAS 2060:2014: Specification for the demonstration of carbon neutrality: Figure 1 – Illustration of the cyclical process for demonstrating carbon neutrality, taking into account permitted baseline period exceptions”. [Simplified version]



**Figure 2. Organisational carbon footprinting**

**Source:** Greenhouse Gas Protocol: <http://ghgprotocol.org/>

# Annex 6: Bentley UK Retailer Carbon Reduction Plans

## Example of Bentley UK Retailer Carbon reduction Plan Template

### RETAILER CARBON REDUCTION PLAN – IDEAS FOR RETAILERS

#### IMPORTANT NOTES

- The below ideas are based on Bentley's ideas & recommendations from the Crewe factory and are not exhaustive – retailers must commit to 3 actions per year (2 carbon reduction focused and 1 sustainable POS focused) to reduce their emissions to a level lower than year before. Equivalent alternatives can be developed by retailers and approved by Bentley UK
- Recertification is based on a reduction of carbon emissions each year – no % target is specified within this
- Behavioural actions should be added into your carbon reduction plans to promote a culture of sustainability within your teams

Please read the following ideas and then progress to the team brainstorming template on the next page

#### CARBON REDUCTION ACTION IDEAS

- Switch to Green energy tariff
- Switch to Green Gas
- 100% LED lighting on smart dimers
- Power down night time procedure established
- Observe 'dead band' temperature control
- Install solar panels / Battery storage solutions
- PHEV fleet and marketing cars
- Company staff fleet to PHEV or BEV
- Fix Air leaks and insulate buildings (workshops)
- Update boilers
- Install voltage regulating device
- Fast close airlock doors and revolving front doors
- Compressed air removed from workshops – switch to electric tools
- Use of rainwater - greywater for site facilities
- Reduce fridges 1 degree

#### SUSTAINABLE POS ACTIONS

- Biodiversity actions outside retailer building e.g. living walls, wild flowers
- No single use plastics e.g. water bottles, service and workshop materials
- No printers – digital POS
- Living walls
- Water stations
- Locally sourced catering
- Recycling bins around business
- Sustainable events
- Green roof (biodiversity)
- Displays showcasing teams efforts and brands credentials
- Ensure alternatives are available for customers dietary needs e.g. alternative milks, vegan biscuits

#### BEHAVIOURAL & OTHER ACTIONS

- No Single use Plastics
- Cycle to work schemes
- Establish sustainable affinity partners in A&I
- Have team lift share days
- Have 'meat free Mondays' / weeks
- Local catering suppliers
- Team competitions on reduction ideas
- Plan communal food/drink properly reducing waste e.g. Milk
- Switch milk to alternatives such as Oat or Soya. (Oat is lowest carbon emissions)



National CO2 breakdown  
Please consult your own report for detailed data to identify opportunities to focus on