



BENTLEY



EXTRAORDINARY JOURNEY UK

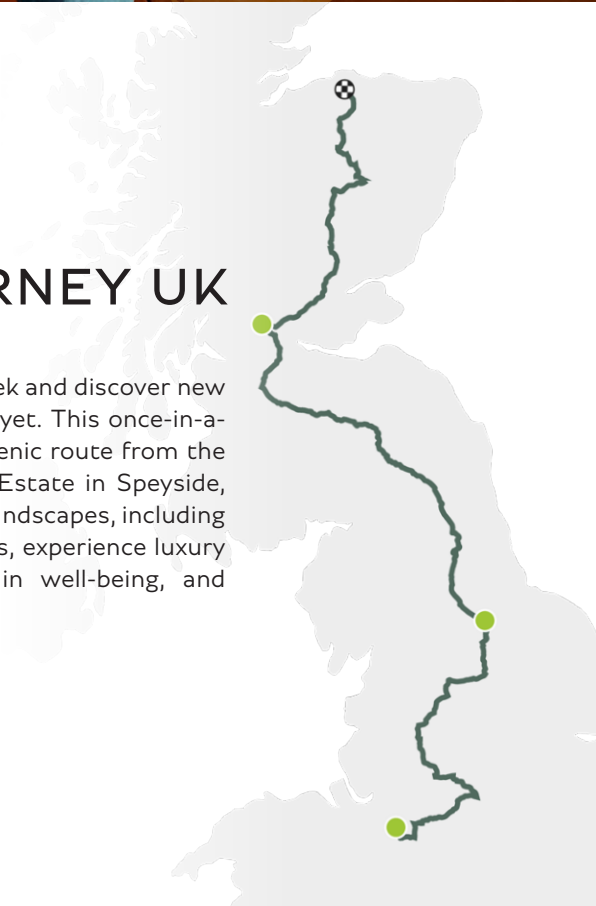


BENTLEY

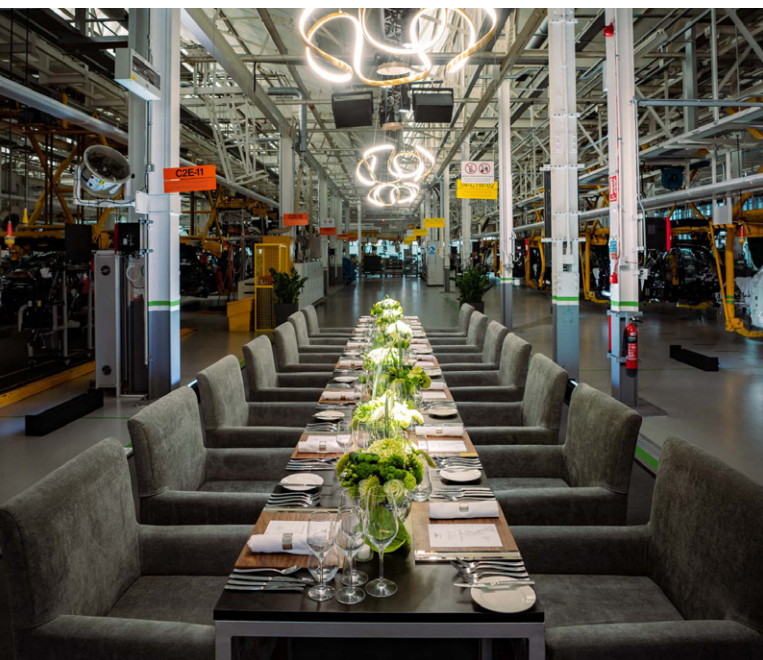


## EXTRAORDINARY JOURNEY UK

Join us on an Extraordinary Journey where you will seek and discover new experiences on one of our most dynamic adventures yet. This once-in-a-lifetime road trip will take you on a breathtakingly scenic route from the home of Bentley Motors in Crewe to The Macallan Estate in Speyside, Scotland. Driving a Bentley through stunning British landscapes, including the Peak District, the Yorkshire Dales and Cairngorms, experience luxury enhanced by performance, exhilaration grounded in well-being, and innovation rooted in craftsmanship.







## DAY 1

Arriving in Cheshire, you will be greeted by the Bentley event team at the Home of Bentley in Crewe. Your host will transfer you to the heart of Bentley to enjoy a private lunch, before visiting the factory and the brand's flagship CW1 House. Here, you will be offered a unique opportunity to go behind the scenes and meet our colleagues, experience exactly how our beautiful cars are built and learn about new innovations and our drive to a sustainable future.

Attend an intimate private dinner within the factory itself, celebrating our focus on sustainability by ensuring every ingredient of our dining experience is sourced within a 26-mile radius of the factory. A wonderful way to become acquainted with your fellow guests ahead of our journey the next day.





## DAY 2

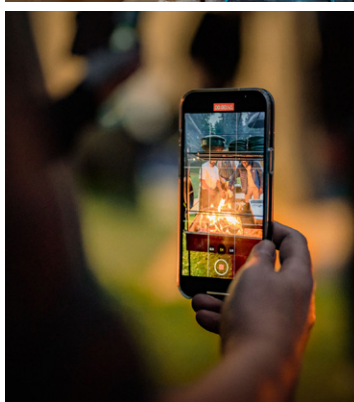
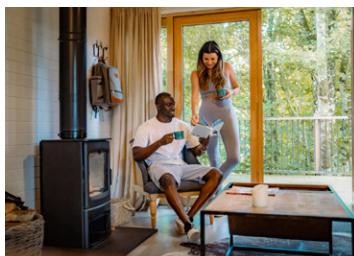
After a leisurely breakfast, you will collect your Bentley before driving in convoy into the Peak District National Park, characterised by its outstanding natural scenery.

Passing idyllic chocolate-box villages and world-famous market towns, we'll stop for mouth-watering refreshments before heading north into the "Dark Peak" region.

Enjoy a visual and experiential treat set in the picturesque Yorkshire countryside at Grantley Hall, offering a typically British afternoon tea.

Our final destination on this day is within the Yorkshire Dales, an outstanding landscape of spectacular peaks and renowned for initiatives to make it a more sustainable place to live, work and visit. Set in 200 acres of this beautiful English countryside is the exquisite Middleton Lodge, our home for the evening and the setting for an incredible dinner created lovingly with home-grown and locally-sourced seasonal produce.





## DAY 3

Choose to balance the mind, body and soul by starting your day with a choice of wellness activities in the natural setting of Middleton Lodge.

After breakfast, our convoy continues into the North Pennines and the Northumberland National Park, before heading north into Scotland.

As you head north, you cannot help but let the scenery make its impression on you, from rolling hills and picturesque countryside to spellbinding abbeys, awe-inspiring stately homes and castles.

Tonight's experience will be particularly special as we arrive at The Treehouses of Lanrick, a hidden gem offering true escapism in a stunning and secluded woodland setting bordering the Trossachs National Park.

It's a setting which allows you to find peace and tranquillity as you stay within the canopies of beautiful trees and the wide variety of birds, red squirrels and other wildlife to which they are home. This truly-green accommodation does not compromise on luxury and, along with the rest of the programme, only continues to highlight how unique an experience this truly is.

As night falls, you will enjoy an exquisite, immersive al fresco dinner with seasonal produce under the stars.





## DAY 4

Bidding a reluctant farewell to the Treehouses, we drive northeast towards Great Britain's largest National Park and our final goal, The Cairngorms. We will pause for refreshments during our spectacular traverse of this stunning wilderness at the peerless Fife Arms in Braemar.

The continuation from here will allow us to experience one of the best driving routes in the UK, culminating in the arrival at The Macallan's Distillery located in the heart of Speyside, Scotland. Here, you will enjoy an immersive experience which will bring The Macallan and Bentley Motors unique global partnership to life. This experience will include a private distillery tour followed by a tutored nosing and tasting where you will learn about the process, production, people and passion that make every bottle of The Macallan single malt whisky so special.

The evening will conclude with a private, specially curated gastronomic dining experience, which celebrates the shared values at the heart of our partnership. A great way to celebrate the end of our trip and the friendships we've made.



## DAY 5

With a final breakfast, you can reflect on the true exhilaration you will have experienced on this journey, in the company of like-minded people, having created memories that will last a lifetime.

Departure arrangements thereafter can be arranged on an individual concierge basis, entirely in accordance with your wishes. We will provide chauffeur transfers to Aberdeen and Inverness International Airport's, or our ATOL-accredited team can help you book scheduled flights or charter a private jet for you.

### **WANT TO CONTINUE YOUR EXPERIENCE?**

A potential addition to your experience could be to join the Caledonian Sleeper from Inverness, an iconic railway journey to London which would allow you to enjoy the ever-changing views of rolling countryside, imposing castle ruins and wave-lapped beaches from the luxury of a first-class carriage, complete with a private ensuite bedroom.

The Caledonian Express arrives into London Kings Cross, where we can support with onwards travel arrangements if required.

Equally, we can extend your experience further with unique London experiences, such as an exclusive tour of the permanent collection or exhibitions at the Victoria and Albert Museum, or an upscale dining experience at Core by Clare Smyth, an elegant fine dining restaurant with an emphasis on natural, sustainable, artisanal food, sourced from the UK's most dedicated farmers and food producers.

Whatever you prefer, the Bentley event team can obtain exclusive rates and will make all of the arrangements on your behalf.





## PRICE

Places on this exclusive trip are limited. Attendance is priced at **£17,950 per person**, based on two people sharing. Please note that all departure arrangements, flights, and insurance are not included and there is a single occupancy supplement.

## DATES

The Extraordinary Journey UK programme will run on the following dates in 2023:

- 3 - 7 July
- 17 - 21 July
- 7 - 11 August
- 11 - 15 September

## BENTLEY EVENT TEAM

For further information, please contact the Bentley event team:

Email: [extraordinaryjourneyuk@bentleyeventsteam.com](mailto:extraordinaryjourneyuk@bentleyeventsteam.com)

Telephone: 01509 817 932

**Please note:** Itinerary is subject to change.



# EXTRAORDINARY JOURNEY UK

## Frequently Asked Questions

### GENERAL QUERIES

**Q Are children allowed?**

**A** Unfortunately, on this occasion children are not allowed. The itinerary for the journey focuses on long driving periods and culminates in a bespoke experience at The Macallan Estate. Guests must be over the age of 18 years old to participate in this experience.

**Q I would like to attend but do not want to drive**

**A** This trip is self-drive, giving you the opportunity to truly experience the vehicle across different landscapes. We would not recommend booking onto the experience if you do not wish to drive.

**Q I have restricted mobility – can I join the trip?**

**A** All venues have disabled access, please inform the Bentley event team at time of booking if you have any specific requirements which should be accounted for.

**Q Do I need my own car or will Bentley provide one?**

**A** Bentley will provide a car for you and you will have the option to experience several models throughout your experience, should you wish to do so.

**Q How many people will attend the trip?**

**A** The maximum number of guests on each experience is 5 couples, 10 guests in total.

**Q Can I add an extra night at the beginning or end of the trip?**

**A** The Bentley event team will assist as a bespoke concierge service. If you wish to extend your experience further with unique experiences, please do not hesitate to contact us.

**Q I have special dietary requirements – will they be catered for?**

**A** Please inform the Bentley event team at time of booking of any dietary requirements which need to be catered for.

**Q Can you provide assistance with visa applications?**

**A** The Bentley event team will be able to assist you with a letter of invitation or other supporting documentation. If you need any further details, please get in touch.





## EXPERIENCE FEES AND PAYMENT TERMS

**Q What is the package cost?**

**A** Attendance is priced at £17,950 per person, based on two people sharing. Should you wish to attend individually, a single supplement would apply, please contact the team for more information. Please note that all departure arrangements, flights, and insurance are not included.

**Q What are the payment terms?**

**A** Payment terms for this experience are as follows:

- 20% deposit to be paid at time of booking to secure your place
- 50% deposit to be paid 10 weeks prior to the experience
- Remaining 30% deposit to be paid 6 weeks prior to the experience

**Q Is my deposit non-refundable?**

**A** All deposits for the experience are non-refundable.

**Q What are the cancellation terms?**

**A** If you want to cancel at any time, all deposits paid for this experience will be non-refundable.

We will deduct the relevant cancellation charge from any payment for the Services which we have already received and, to the extent that these are insufficient, you will remit the balance to us within 14 days of the date on which you give us notice of cancellation. Please refer to the booking form for the detailed Terms & Conditions of this experience.

Likewise, if you are unable to attend the experience due to contracting COVID-19, the fees will be non-refundable. Where possible we will try to rebook you on an experience for a later date.

**Q Do I need travel insurance?**

**A** We recommend getting travel insurance for this experience. Although we do not provide this please get in touch if you need any recommendations for travel insurers.







BENTLEY

