



BENTLEY



**EXTRAORDINARY JOURNEY
SCANDINAVIA**

EXTRAORDINARY JOURNEY SCANDINAVIA

Five inspiring days. Four luxurious nights.
One Extraordinary Journey.

Join us on an adventure of architectural discovery.

Prepare for an unparalleled experience – a journey that takes you from the beating heart of Stockholm to a luxury wilderness experience deep in the Swedish forests, and on to the contemporary wonders of Copenhagen – World Capital of Architecture 2023.





Top Left: Ett Hem, Stockholm
Top Right: Trakte Forest Hotel, Holsbybrunn
Bottom: Nyhavn, Copenhagen

Arriving in Stockholm you will be collected from the airport in the comfort of a Bentley and chauffeured to Ett Hem for an exclusive overnight stay.

Ett Hem's extraordinary interiors were designed by Ilse Crawford to appeal to the modern traveller. Blurring the lines between home and hospitality, the hotel embraces your needs with wellness and understated elegance – a true reflection of Bentley. Here, you have time to relax in your room, explore the wellness spaces, and enjoy a homemade pastry in the kitchen. Ett Hem – which translates literally to 'a home' in Swedish, is yours to enjoy.

After settling into your suite, we'll host a welcome reception in the living room, providing an opportunity to meet both your hosts and fellow guests – followed by dinner in the library, and a nightcap.



Above: Architectural lighting detail, Ett Hem library



Top: Ett Hem exterior. Library dining
Bottom: Ett Hem suite, Lounge space, House chef

After a leisurely breakfast in the Ett Hem Library, we begin the journey. Chauffeured through Stockholm to enjoy the sights of the city, we will arrive at a scenic drive-away point to kick start your exhilarating journey behind the wheel.

Our lunch stop is Naturehouse - a sustainable greenhouse that produces food and recycles energy through innovative design. Positioned on Lake Vättern, the second largest lake in Sweden, you'll experience breathtaking views and enjoy a selection of locally produced dishes.

The afternoon drive takes us into the Swedish forest, where we arrive at Trakt Forest Hotel - a contemporary wilderness experience centred around authentic craft and architectural detail. Unwind in the sauna or hot tub on arrival, followed by a drinks reception in the heart of the forest where you'll be welcomed by Sandra and Mattias, the fourth and fifth generation owners who have incredible stories to tell – from the hotel's origins to elegantly crafted moments in your suite. That evening, dinner is cooked over fire in the forest. Expect exceptional Scandinavian cuisine enriched by your incredible natural surroundings.

After a nightcap around the fire, you retire to your forest suite for the night – a true representation of Bentley's design values of sustainability, materiality, and innovation.



Above: Trakt forest suite by Wingårdh Arkitektkontor



Top Left: Forest suite interior
Top Right: Naturehouse, Uppgrena, by Tailor Made Arkitekter
Bottom: Forest dining experience, Fire cooking, Dinner tent

The day begins with a breakfast basket delivered to your suite and an optional guided forest walk to be at one with nature. Leaving Trakt, you will collect your Bentley to continue your Extraordinary Journey.

Travelling through the Swedish Woodlands, we'll make a stop for coffee before continuing on our journey to Wanås Hotel and Sculpture Park for lunch and exploration. Step out and marvel at the inspiring sculptural forms or find a moment of reflection at Yoko Ono's Wishing Tree. Surrounded by a series of transformed architecture, the hotel blends traditional and contemporary - from a Swedish barn and stable to a site of sleek Scandinavian design. An idyllic spot to enjoy the fresh produce menu.

Driving on, we reach Malmö to cross the stunning Öresund Bridge, the longest in Europe, connecting Sweden with Denmark. From our final stop, unwind and enjoy a chauffeured journey through the Copenhagen cityscape.

Arriving in Copenhagen, the next two nights are spent at Nimb. With its striking facade, this luxury wellness hotel is located in Tivoli Gardens, an iconic base to explore the city.

The evening will conclude with dinner at Restaurant Trio, the highest restaurant in the city, located in the newly designed Axel Towers. As a vision of new Danish architecture, you will experience an awe-inspiring night time view and immersion into the exciting buzz of Copenhagen.



Above: Öresund Bridge, Malmö



Top: Wanås Hotel, designed by Kristina Wachtmeister.
Top Right: Konst Sculpture park **Bottom Left:** Nimb exterior
Bottom Centre: Scandinavian cuisine **Bottom Right:** Axel Towers

Choose to balance the mind, body and soul by starting your day with a private yoga session at the ornate Peacock Stage in Tivoli Gardens. With exclusive access to the park before opening, you will enjoy a moment of contemplation before breakfast on the Nimb terrace.

Transferred to a private boat, you will navigate Copenhagen's iconic waterways from the colourful canals to the modern waterfront. With a tour hosted by the Danish Architecture Centre, you will experience the dynamic landscape of the city from this unique perspective.

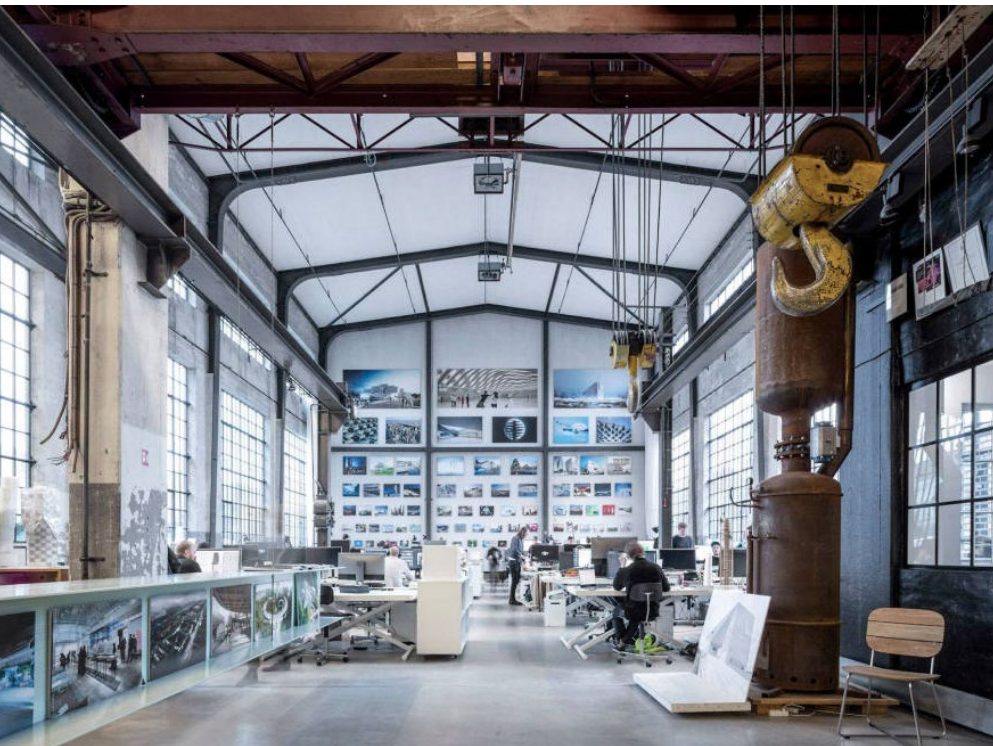
Our architectural highlight is an exclusive visit to the studios of the Bjarke Ingels Group, otherwise known as BIG, one of the world's greatest architectural practices. Hosted by a member of the BIG team, you are given a tour of the studio with insights into their creative practice, ending with a curated lunch experience in the beating heart of the studio.

The afternoon will provide time at leisure to enjoy a moment of wellness at Nimbs hammam spa, explore Tivoli Gardens or take a guided walking tour of the city.

As the final crescendo of your Extraordinary Journey, the day culminates with a sensorial dinner experience at one of the world's leading restaurants for a truly unforgettable experience.



Above: Nyhavn, Copenhagen

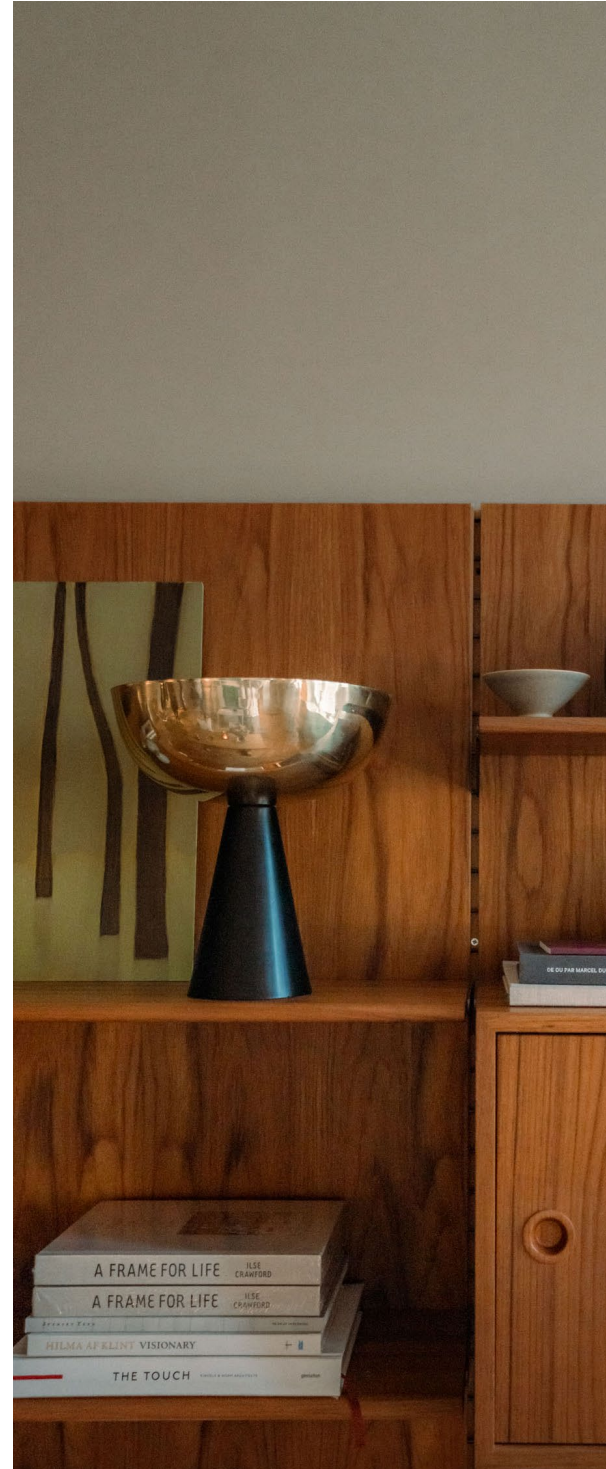


Top Left: BIG Studio* **Top Right:** Studio dining experience
Bottom Left: Sustainable cuisine **Bottom Centre:** Traditional Copenhagen Architecture
Bottom Right: BIG studio tour

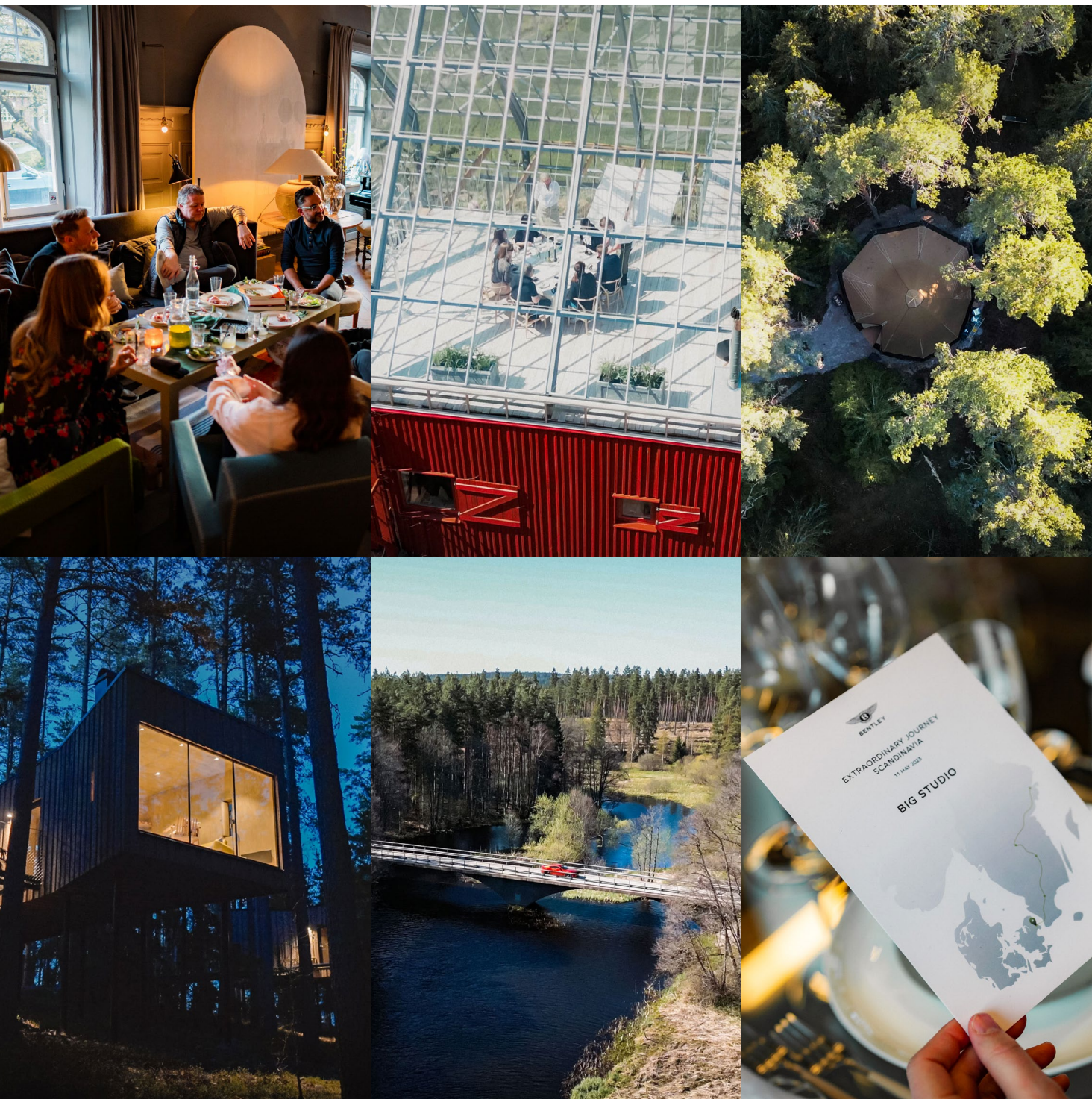
*Photo by Rainer Tepper

It is time for your final breakfast at Nimb, and an opportunity to reflect on the exhilaration you have experienced on this journey, in the company of likeminded people, creating memories that will last a lifetime.

Your departure arrangements will be confirmed on an individual concierge basis, entirely in accordance with your wishes. We provide a chauffeur transfer to Copenhagen International Airport, Kastrup, or alternatively, our team can arrange additional onward activities to continue your Copenhagen journey.



Above: Ett Hem, interior detail



Top Left: Ett Hem lounge **Top Centre:** Naturehouse lunch
Top Right: Trakt dining experience **Bottom Left:** Trakt forest suite
Bottom Centre: Swedish Landscape **Bottom Right:** BIG studio dinner



Above: Trakt dining experience

PRICE

Places on this exclusive trip are limited. Attendance is priced at £16,950 per person, based on two people sharing. Please note that all departure arrangements, flights, and insurance are not included.

DATES

The Extraordinary Journey Scandinavia programme will run from:

- 28 August - 1 September

BENTLEY EVENTS TEAM

For further information, please contact the Bentley Events Team:

Email: info@bentleyextraordinaryjourneyscandinavia.com

Telephone: +44 (0)7482 620 181

Responses will be during UK business hours Monday to Friday excluding Bank Holidays.

Please note: Itinerary is subject to change.

GENERAL QUERIES

Q) Are children allowed?

A) Unfortunately, on this occasion children are not allowed. The itinerary for the journey focuses on long driving periods. Guests must be over the age of 18 years old to participate in this experience.

Q) I would like to attend but do not want to drive

A) This trip is self-drive, giving you the opportunity to truly experience the vehicle across different landscapes. We would not recommend booking onto the experience if you do not wish to drive.

Q) I have restricted mobility – can I join the trip?

A) All venues have disabled access, please inform the Bentley Events Team at time of booking if you have any specific requirements which should be accounted for.

Q) Do I need my own car or will Bentley provide one?

A) Bentley will provide a car for you and you will have the option to experience several models throughout your experience, should you wish to do so.

Q) How many people will attend the trip?

A) The maximum number of guests on each experience is 5 couples, 10 guests in total.

Q) Can I add an extra night at the beginning or end of the trip?

A) The Bentley Events Team will assist as a bespoke concierge service. If you wish to extend your experience further with unique experiences, please do not hesitate to contact us.

Q) I have special dietary requirements – will they be catered for?

A) Please inform the Bentley Events Team at time of booking of any dietary requirements which need to be catered for.

Q) Can you provide assistance with visa applications?

A) The Bentley Events Team will be able to assist you with a letter of invitation or other supporting documentation. If you need any further details, please get in touch.

EXPERIENCE FEES AND PAYMENT TERMS

Q) What are the payment terms?

A) Payment terms for this experience are as follows:

- 30% deposit to be paid at time of booking to secure your place.
- 70% balance to be paid 8 weeks prior to the experience.

Q) Is my deposit non-refundable?

A) All deposits for the experience are non-refundable.

Q) Do I need travel insurance?

A) We recommend getting travel insurance for this experience.

Q) What are the cancellation terms?

A) If you want to cancel at any time, all deposits paid for this experience will be non-refundable. We will deduct the relevant cancellation charge from any payment for the Services which we have already received and, to the extent that these are insufficient, you will remit the balance to us within 14 days of the date on which you give us notice of cancellation. Please refer to the booking form for the detailed Terms & Conditions of this experience.

Likewise, if you are unable to attend the experience due to contracting COVID-19, the fees will be non-refundable. Where possible we will try to rebook you on an experience for a later date.



BENTLEY

