



BENTLEY

# BENTLEY ENVIRONMENTAL FOUNDATION IMPACT REPORT

1ST EDITION



# Welcome



It brings me great pleasure to introduce you to the Bentley Environmental Foundation's inaugural impact report, covering the period from June 2023 to June 2025. At Bentley, we create the ultimate benchmark in performance and luxury for generations

to come, blending craftsmanship, innovation and sustainability to deliver ever-evolving experiences. More than a century ago, W.O. Bentley set out to build "a fast car, a good car, the best in its class". Founded in June 2023, the Foundation embodies this same spirit of ambition and progress, reflecting our commitment to addressing some of the most urgent global challenges, beyond our business needs. Such challenges demand collaboration on a global scale, and what began in Crewe with a vision of excellence has evolved into something extraordinary: today, the Foundation has proudly supported 18 projects across 14 countries worldwide. From protecting a vital breeding and calving ground for North Atlantic humpback whales in the Dominican Republic, to restoring mangrove forests in Kenya and seagrass meadows in Spain, it has made a profound impact for both people and planet.

Since our launch, we have partnered with 10 specialist charities and non-governmental organisations (NGOs). They not only bring visionary ideas but the deep expertise to deliver long-term, on-the-ground solutions. When combining these

partnerships with our reach and influence within the luxury sector, the exciting potential of the Foundation comes to life. Beyond our project work, we are equally proud of our efforts to engage, educate and inspire our colleagues, customers and the wider public, building awareness and momentum for meaningful change. In 2024, the Foundation hosted a beach dinner for Bentley customers at Monterey Car Week in California (pictured right), during which we announced our support for a kelp restoration initiative off the Californian coast. A striking kelp-themed art installation brought the project's story to life, while representatives from the charity were on hand to speak with guests and share insights. Whether it has been through our volunteering initiatives held for colleagues cleaning up the Valley Brook, a river close to Bentley's HQ, or the launch of the 'Let's Talk Sustainability' internal forum, where Foundation charity partners had the chance to speak to our colleagues on different topics, we are incredibly proud to have fostered a community of changemakers here at the home of Bentley. None of the progress shared in this report would have been possible without the vision, expertise and dedication of our charity partners, as well as the energy and enthusiasm of our colleagues, customers and supporters across the Bentley community. As the Bentley Environmental Foundation grows, so too does our belief that through collective action, we can drive lasting change for people, for the planet and for generations to come.

**Wayne Bruce**  
*Chief Communications and DEI Officer at Bentley Motors, and Head of the Bentley Environmental Foundation*

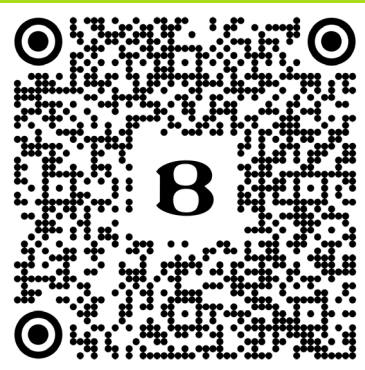


## Foundation honoured with top awards

The Bentley Environmental Foundation was honoured with the top prize in the Sustainability Initiative Award at the prestigious AutoTrader New Car Awards 2024 (below) – a moment that marked global recognition of our commitment to tackling climate change. In a field of entries including some of the world's leading car manufacturers, the judges were struck by the breadth of the Foundation's initiatives and the impact it had made in less than a year of its launch. As further testament to its dedication to environmental regeneration, the Foundation's project to restore the Valley Brook river in Crewe – delivered in partnership with The Rivers Trust – was also shortlisted in the Automotive & Transport category at the Business Charity Awards, and the Nature Project of the Year category at the UK Green Business Awards.



**HELP US MAKE A DIFFERENCE**  
To find out more on how to donate, please scan the QR code







# Contents

## 4 A FUTURE BUILT ON IMPACT

How the Bentley Environmental Foundation is working on the ground with selected partners worldwide to tackle our biggest challenges

## 5 IMPACT BY NUMBERS

Highlights of the Foundation's remarkable achievements to date

## CHAPTER ONE

Protecting and Regenerating Nature

### 7 REWILDING THE OCEAN

Working with Seatrees, the Foundation is revitalising ocean ecosystems and coastal communities in Africa, Europe and the US.

### 10 INTO THE BLUE

Blue Marine Foundation's global projects are gaining momentum in the mission to protect 30 per cent of our oceans

### 13 NATURE'S COMEBACK

With the Foundation's support, The Rivers Trust is bringing new life to a small river near Bentley's home in Crewe

### 16 REVIVING THE RIVER

A collaboration with everwave is cleaning up the Chao Phraya River as it winds through Thailand's capital Bangkok

## CHAPTER TWO

Enabling Changemakers

### 20 DESIGN INSPIRED BY NATURE

Read how partner Biomimicry Institute is helping startups to grow and bring nature-inspired solutions to life

### 23 CHARTING A NEW COURSE

Businesses are reimagining the way they work for a better future, thanks to a practical guide co-created with partner Forum for the Future

### 26 THE NATURE FIX

A vibrant community network, developed in collaboration with Hubbub, is inspiring people to reconnect with nature

## CHAPTER THREE

Driving Innovative Solutions

Towards Decarbonisation

### 30 TIME TO ACT

Discover how a partnership with the Climate Group is accelerating initiatives in the journey towards net zero

### 33 POWER TO THE PEOPLE

In partnership with Renewable World, communities in western Nepal are reaping the benefits of clean energy

### 36 THE FUTURE IS NOW

Learn how an initiative with partner Project Drawdown is boosting science-based climate solutions

# Supporting our partners across the world





An aerial photograph showing a winding asphalt road that curves through a dense, lush green forest. To the right of the road, a calm river flows, its surface reflecting the surrounding greenery. The road has a yellow center line and white edge lines. The forest is composed of many tall, thin trees, likely conifers, with vibrant green foliage. The overall scene is peaceful and natural.

# A future built on impact

The Bentley Environmental Foundation is driving sustainability through collaboration, innovation and a deep commitment to environmental progress

**W**e believe that meaningful environmental progress is achieved through powerful partnerships and purposeful action. That's why we collaborate with specialist, forward-thinking charities and NGOs, whose innovative ideas, reach and infrastructure allow us to create lasting change where it's needed most. Every initiative we support is aligned with our core strategic pillars: Protect and Regenerate Nature, Enable Changemakers, and Drive Innovative Solutions Towards Decarbonisation.

#### **Protect and regenerate nature**

Restoring and preserving nature is one of the most powerful ways to address the climate and biodiversity crisis, yet these natural climate solutions remain critically underfunded. That's why we focus on scaling nature-based solutions that protect critical habitats, enhance biodiversity and build ecosystem resilience. From forests and wetlands to oceans and peatlands, healthy ecosystems serve as vital carbon sinks and lifelines for countless species. We want to help nature do what it does best: heal and sustain our planet.

#### **Enable changemakers**

Equally important are the individuals and organisations driving system-wide change, the changemakers. They are

the visionaries, advocates and entrepreneurs challenging the status quo and reshaping the environmental narrative. We aim to amplify their voices and support their ideas, nurturing a generation equipped to steer us towards a more sustainable future, today and for generations to come.

#### **Drive innovative solutions towards decarbonisation**

Innovative solutions to the world's most pressing environmental challenges will be needed to decarbonise today's complex systems and processes. Through funding visionary entrepreneurs, pioneering research and the development of cutting-edge solutions that accelerate decarbonisation, the Foundation aims to unlock transformative change and accelerate practical pathways to a sustainable future, for both people and the planet.

#### **Guided by the impact experts**

To uphold the highest standards of transparency and accountability, we partner with the Charities Aid Foundation (CAF), a recognised leader in global impactful corporate giving. By assisting in the assessment and verification of prospective projects, and the ongoing impact reporting of project delivery, CAF ensures that every grant we provide drives meaningful environmental change.





# Impact by numbers

A snapshot of the Bentley Environmental Foundation’s achievements so far...



## 18 projects in 14 countries around the world

Since its launch in 2023, the Bentley Environmental Foundation has funded bold and impactful initiatives worldwide, supporting grassroots and global efforts alike as part of a long-term commitment to preserve and regenerate our planet for future generations.

1,600+

## activities delivered

The activities have ranged from supporting innovative sustainable technologies to marine conservation, enhancing biodiversity and community engagement.



636,000+

## beneficiaries

The Foundation’s partnerships with its 10 carefully selected charities and NGOs have benefited significant numbers of people across the globe through its innovative and transformative projects.

200,000+

## mangrove trees planted in Kenya



With partner Seatrees, the Foundation has restored coastal ecosystems worldwide, including the planting of mangrove trees in Kenya and seagrass forest regeneration in both Portugal and Spain.

26

## green spaces funded across the UK



In partnership with Hubbub, the Foundation has awarded grants to community-led green spaces to not only enhance local environments but also to promote healthier, more sustainable ways of living.



30+

## Bentley volunteers

Bentley staff volunteered through partner The Rivers Trust on a project to regenerate Valley Brook, a river located close to Bentley’s HQ in Crewe, England.







CHAPTER ONE

# Protecting and Regenerating Nature





# Rewilding the ocean

The Bentley Environmental Foundation in partnership with Seatrees is restoring ocean ecosystems and supporting coastal communities in the US, Kenya, Spain and Portugal



## In numbers

Funding from the Bentley Environmental Foundation is helping to make a significant impact in coastal areas worldwide...

### Mallorca, Spain



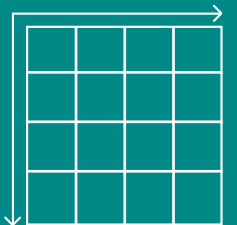
**240**

seagrass fragments

and **25 m<sup>2</sup>** (269 ft<sup>2</sup>) of macroalgae planted

### Portugal

**1 hectare** (2.5 acres)  
of seagrass meadows  
protected in Setúbal



Around half an hectare (one acre) of seagrass can support **40,000+ fish** and **50 million invertebrates**

### California



**10,000 m<sup>2</sup>**

(2.5 square acres) of kelp  
forest restored in Monterey

Kelp forests are home to **700+ marine species**, including sea otters, seals and countless invertebrates

### Kenya

**150,000**

mangrove trees  
planted at  
Marereni



**50,000**

mangrove trees  
planted at  
Mida Creek







Michael Stewart and Kevin Whilden met on the swells of Ocean Beach in San Francisco, where they would regularly go surfing early morning before going to work. They noticed first-hand how coastal areas were changing. So, in 2011, they quit their jobs and set up non-profit organisation Sustainable Surf, seeing an opportunity to use the popularity of surf culture to highlight the threats of climate change.

Today, the California-based organisation has been renamed Seatrees, and its focus is on working with local partners and communities worldwide to restore and protect coastal ecosystems, from mangrove and kelp forests to seagrass meadows and coral reefs. The programme has big ambitions, with a goal to increase its 25 project sites to 100 by 2030.

"All life began in the ocean," explains Kevin Whilden, Co-founder and Director

at Seatrees. "Protecting and restoring ocean ecosystems is one of the best ways to give back to the ocean, which provides food for billions and is the hero of reversing climate change."

Our oceans provide us with essential needs to survive on the planet. Covering more than 70 per cent of the Earth's surface, they help fight climate change, foster biodiversity and support coastal communities. They produce more than half of the world's oxygen we breathe and absorb half of all man-made carbon dioxide (CO<sub>2</sub>), which is fuelling the climate's shift to a warmer world. They are also home to as many as two million species and provide food and livelihoods for billions of people.

"Even if you don't live by the ocean, the health of those ecosystems is vitally important for everything about you," adds Whilden. "They are the life support systems of our planet."

#### Success stories

Seatrees has launched 25 projects worldwide, collaborating with local partners who share its goals of preserving the planet for future generations. The Bentley Environmental Foundation is working with Seatrees on a number of initiatives, from restoring and protecting mangrove forests in Kenya to regenerating seagrass in Spain and Portugal. It is also supporting a kelp forest project in Tanker's Reef, in partnership with Reef Check California.

"One of the greatest challenges facing California's coastline today is its loss of kelp forest," says Whilden. "Instead of healthy, vibrant forests we have so-called 'urchin barrens', which are basically barren of anything else other than purple sea urchins."

More than 90 per cent of California's kelp forests have been lost due to climate change and warming waters,

#### RESTORING HOPE IN KENYA

Mangrove forests in Kenya are fast diminishing as they are cut down for fuel and construction. Funding from the Bentley Environmental Foundation has enabled Seatrees to expand two projects in Marereni and the Mida Creek in Watamu National Marine Reserve. Working with local non-profit COBEC, the initiatives have resulted in the planting of around 200,000 mangrove trees of different species to improve the ecosystem's resilience and support a greater variety of wildlife. They have also provided local employment opportunities in nursery and planting activities, including roles for members of the disabled community, and a scholarship fund has been established for local secondary school students.



Watch the videos to find out more about Seatrees' projects Marereni and Mida Creek.





a trend exacerbated by a proliferation of purple sea urchins and the disappearance of its primary predator, the sunflower sea star (or starfish), due to disease.

Tanker’s Reef lies in the heart of Monterey, near the tourist shops and restaurants at Old Fisherman’s Wharf. Here, scientists and volunteer divers help to regenerate giant kelp forests, carefully removing sea urchins from a one-hectare (2.5 acres) plot and allowing kelp to naturally regenerate, restoring habitat that supports marine biodiversity. The Foundation is also funding the Sunflower Star Laboratory to assist in long-term sustainable sunflower star aquaculture and research into their recovery to aid kelp forest restoration. This will allow the laboratory to settle and grow pycnophodia and other local echinoderms.

“Partnering with the Bentley Environmental Foundation is a game-

changer for our kelp restoration efforts in California,” says Michael Stewart, Co-founder and Director at Seatrees. “Its support not only aids in the recovery of crucial marine habitats but underscores the importance of innovative collaborations in addressing climate change and protecting our oceans for future generations.”

Leah Hays, Programme Director at Seatrees, adds: “Restoring the health of our ocean planet is no easy feat. It takes helping hands from all corners of the planet to make measurable and lasting change. When brands such as Bentley forge a mission to give back, the humble efforts of groups working on the frontlines of the climate crisis are transformed into momentous achievements.”



Watch the video to find out more about Seatrees’ project in Monterey

### SAVING SEAGRASS IN SPAIN AND PORTUGAL

On the Spanish island of Mallorca, funding from the Bentley Environmental Foundation is assisting Seatrees to regenerate seagrass meadows that have been destroyed by high boat traffic, marine debris and habitat degradation. In collaboration with local partner The Cleanwave Foundation, it is planting seagrass and macroalgae on a one-hectare (2.5 acres) site and educating locals about best fishing and boating practices.

In Portugal, Seatrees and the Bentley Environmental Foundation are working with Ocean Alive to protect a seagrass meadow in Cambalhão Bay in the Sado Estuary. Under threat from anchoring and poor boat navigation, the rapidly depleted seagrass has adversely impacted the fish population and resident dolphins. In partnership with local organisations and a women-led community project, the initiative is also funding scientific mapping of the meadow and community engagement and education.



Watch the video to find out more about Seatrees’ projects in Spain and Portugal.





# Into the blue

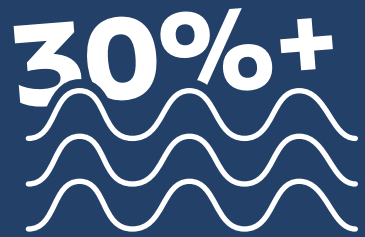
The Bentley Environmental Foundation is supporting Blue Marine Foundation's work in the Dominican Republic, Italy, Uruguay and Greece as part of a global effort to protect 30 per cent of our oceans by 2030



## In numbers

The Bentley Environmental Foundation in support of Blue Marine Foundation has already delivered significant benefits...

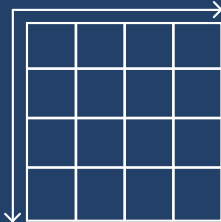
### Dominican Republic



Supported the scientific evidence to designate two marine protected areas, covering more than **100,000 km<sup>2</sup>** (38,610 square miles). It is the first Caribbean nation to designate commitments to protect **30 per cent of its oceans by 2030**

### Uruguay

Supported the creation of **40 km<sup>2</sup>** (15 square miles) **Isla de Lobos** marine protection area (MPA), the first in Uruguay



Its waters are home to **100 shark and ray species, 31 cetacean species, 38 seabird species** and the largest breeding colonies of South American fur seals and sea lions

### Italy



**Flyers** were created, highlighting the benefits of marine protection for Salina Island and its residents

**15 restaurants and local fishers** were engaged to promote a supply chain based on local, seasonal fish, engaging thousands of people through sustainable menus





The ocean is the blue beating heart of our planet. It underpins our climate system and keeps our planet habitable. Maintaining a healthy marine life is essential to this and it's the reason Blue Marine Foundation wants to see at least 30 per cent of the world's ocean under effective protection by 2030.

The 30 per cent target for the end of the decade is internationally defined by global scientists as a minimum requirement to safeguard biodiversity and build ocean resilience to climate change. With only around 8.1 per cent of the global ocean currently under some level of protection, it is a significant commitment that would almost quadruple the extent of marine protected and conserved areas around the world.

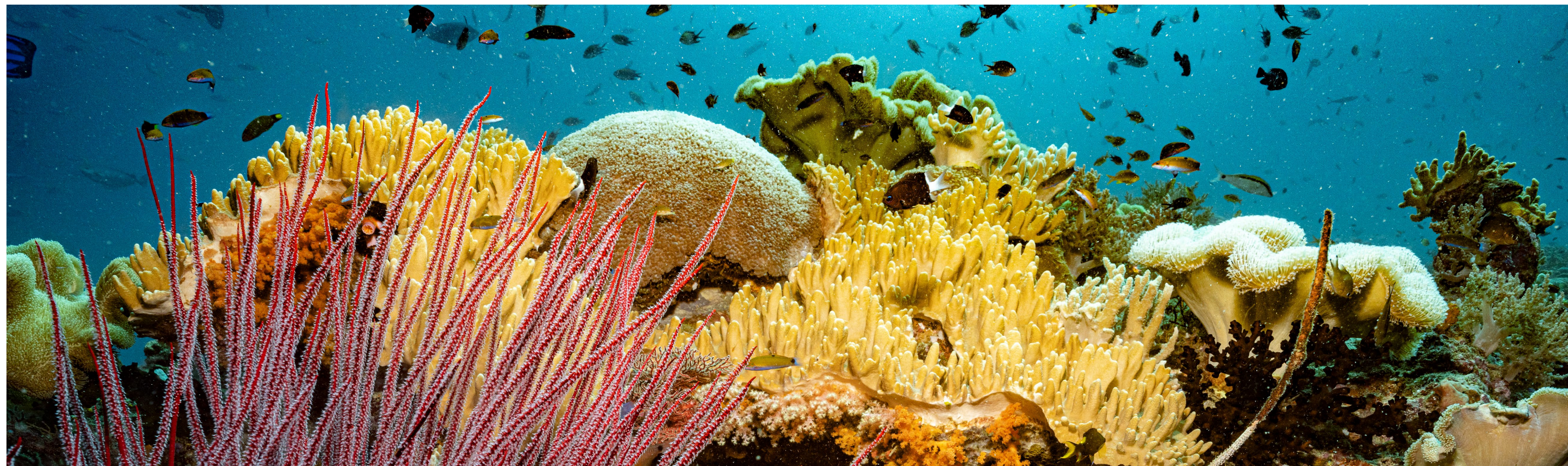
"The ocean is already working for us: absorbing carbon, producing oxygen and sustaining incredible levels of biodiversity," says Jordan Sutherland, Development

Consultant at Blue Marine. "But we are pushing it to the brink and have been for some time. Overfishing, pollution and climate change are stripping the ocean of its ability to support life, including our own.

"Effective protection strengthens marine ecosystems, supports coastal communities and ensures a healthier, more stable ocean for our future."

The Bentley Environmental Foundation has partnered with the UK-based ocean conservation charity on four projects – in the Dominican Republic, Uruguay, Greece and Italy – to help achieve the 30 per cent target through the establishment and effective management of Marine Protected Areas (MPAs), where fishing and other extractive activities are restricted or regulated.

The most advanced initiative is in the Dominican Republic, a country blessed with marine-rich waters that are critical habitats for marine mammals, sharks and



## A CARIBBEAN SANCTUARY

Silver Bank lies 100 kilometres (62 miles) north of the Dominican Republic. A chain of shallow coral shoals and pinnacles, it is one of the most important breeding and calving grounds for North Atlantic humpback whales. Every January to April, thousands migrate to its warm, sheltered waters to mate, give birth and nurse their calves.

The Bentley Environmental Foundation contributed to the expedition to Silver Bank. It was tasked with collecting eDNA samples – invisible genetic traces suspended in seawater – providing data on the genetic diversity and health of the whale population and contributed to the Silver Bank MPA designation.

"Witnessing first-hand the sheer power of humpback whales breaching in Dominican waters, and the tenderness of mothers guiding their newborns after months of migration, reinforced our responsibility to safeguard this vital breeding ground," says Jonathan Delance (pictured above), Deputy Minister of Environment. "With the successful designation of Silver Bank as an MPA, the focus is to work with local and regional stakeholders to strengthen capacity, foster knowledge exchange and ensure effective long-term conservation of this extraordinary ecosystem."





# A global effort

The Bentley Environmental Foundation is also supporting Blue Marine Foundation to create these protection areas...

## Marine review

Efforts are underway to designate an MPA around Salina Island in Italy's Aeolian Archipelago, focusing on biodiversity conservation, sustainable fishing and community engagement. The project combines scientific monitoring, political advocacy and public awareness campaigns to secure legal protection for this ecologically significant area.

## Key biodiversity hotspots

The Uruguayan government and local conservation partners are working to expand MPAs from one to 10 per cent of the country's Exclusive Economic Zone (EEZ). The focus is on protecting key biodiversity hotspots, including critical shark breeding grounds and the largest sea lion colony in the Western Hemisphere.

## Community action

In Greece, an initiative is promoting the designation of the country's first government-backed, community-led no-take MPAs around Amorgos, one of the Cycladic islands. Covering around 12.83 km<sup>2</sup> (4.6 square miles), the project was set up by local fishers and aims to protect key biodiversity areas, promote sustainable fishing and enhance ecosystem resilience.



coral reefs. However, the country has faced increasing pressures from overfishing, habitat degradation and climate change. The government expressed its ambition to protect 30 per cent of its waters, but securing the scientific data, stakeholder engagement and policy commitments to do so required a major collaborative effort.

A consortium of government and conservation partners, including Blue Marine supported by the Bentley Environmental Foundation, worked together to provide the scientific evidence and strategic advocacy needed to secure these protections. The project involved extensive marine research, including

environmental DNA (eDNA) sampling, species monitoring and health assessments of the coral.

In April 2024, the Dominican Republic became the first Caribbean nation to designate more than 30 per cent of its waters as protected, expanding the Silver Bank MPA and establishing the new Jorge Mera Beata Ridge MPA. These areas – extending more than 119,373 km<sup>2</sup> (46,090 square miles) of ocean and identified thanks to data collected from two major expeditions – mean that pivotal habitats for species connectivity, including migratory routes and sheltered waters to mate and give birth, are now safeguarded.

The hope is that the project's success will serve as a precedent for other Caribbean nations that are considering large-scale marine protection and reinforce the importance of both science-led decision-making and cross-sector collaboration in marine conservation.

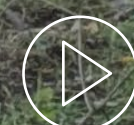
Blue Marine was extremely proud to be part of the wider coalition in the Dominican Republic and acknowledges that the contribution from the Bentley Environmental Foundation proved critical in securing the scientific research expeditions that have ultimately preserved these critical marine travel pathways and breeding and calving grounds for the future.





# Nature's comeback

The Bentley Environmental Foundation is working with The Rivers Trust to restore a small river very close to its home in Crewe, England



Watch our video on  
The Rivers Trust work here



The  
Rivers  
Trust

## In numbers

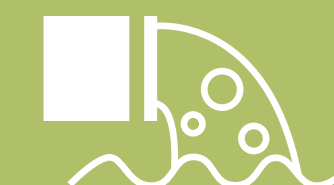
The partnership, in collaboration with the Mersey Rivers Trust, is engaging the wider community to help it protect and improve Valley Brook so all life can thrive in and near the river...

### 210 local people

engaged through community events and activities, from family days to clean-up volunteering and drop-in sessions



**25 farms** supported with advice on the best practice methods to protect the river environment



**10 farm plans** developed with tailored water management strategies and funding guidance to reduce pollution

**100 farmers** reached through engagement events, including a Pie and Pint evening and local agricultural shows







Communities across the UK are increasingly vulnerable to environmental pressures, such as pollution and habitat loss. Nature-based solutions can help tackle these issues, improving water quality, restoring ecosystems and boosting biodiversity. This approach underpins a new initiative to restore Valley Brook, a small river near Bentley's HQ in Crewe, England.

The Bentley Environmental Foundation has partnered with The Rivers Trust, in collaboration with Mersey Rivers Trust, to help restore the brook, which is currently failing to meet water quality standards due to pollution from sewage and agricultural run-off. As urban development has expanded in the area, sections of the brook have been

culverted and reinforced with hard banks. These changes have altered the river's natural flow and disconnected it from its floodplain, increasing the risk of flooding.

To identify the most effective solutions, Mersey Rivers Trust is working at a catchment scale, considering the surrounding landscape and all the activities that might affect Valley Brook. The catchment plan for the waterway, developed in partnership with The Rivers Trust, the Environment Agency, Weaver Gowy Catchment Partnership, Natural England, United Utilities and Greater Manchester Combined Authority, proposes ecological solutions, such as wetland creation and habitat restoration, to help return the river to a more natural, resilient state.

## BUILDING-UP CAPACITY AND SKILL

A vital part of delivering the Valley Brook catchment plan is empowering the people who can drive change on the ground. Like many regions, the environmental sector is facing a shortage of skilled professionals. To address this, Mersey Rivers Trust used initial funding from the Bentley Environmental Foundation to invest in local talent.

The funding enabled the Mersey Rivers Trust to recruit a full-time catchment coordinator and two local trainees, Amara Coombes and Sophie Jennings (left), who are being trained and mentored as they support a wide range of river restoration activities, including community engagement for the Valley Brook project.

"I'm learning about monitoring river health and getting first-hand experience of water vole surveys, riverfly kick sampling, collecting e-DNA samples, different river restoration techniques, such as willow spiling, and how to identify and manage invasive non-native species," says Sophie. "I get to go all over the catchment meeting people and learning more about how to implement river restoration and some of the practical skills. I'm also learning about the communities and different people who need to be involved."

Amara's role focuses on farm advice, and she has valued the outreach aspects of the work. "The hands-on experience and engaging with the community through events like litter picks and volunteering days have been the most rewarding," she says.

Justine Lord, Project Manager at Mersey Rivers Trust, says the support for trainee roles has been essential in building capacity and offering meaningful entry points into conservation careers: "This initiative has provided trainees with relevant training and hands-on experience, equipping them with the skills needed to pursue careers in environmental conservation. The success of this programme highlights the importance of investing in the next generation with green skills to ensure the continued protection and enhancement of our river environment."





**True community action**

Before breaking ground on the physical improvements, Mersey Rivers Trust launched a programme of community engagement activities to build support among key stakeholders and encourage public involvement through volunteering, citizen science and practical conservation work. Early funding provided through the Bentley Environmental Foundation proved instrumental in getting the project off to a strong start.

“Providing funding upfront has enabled the Trust to hit the ground running, organising a variety of community events that have successfully engaged local communities,” explains Justine Lord, Project Manager at Mersey Rivers Trust. “These events have not only fostered community involvement but also supported essential farmer engagement around water management, contributing to the overall health and sustainability of our local environment.”

The programme of activities has been wide ranging. It has included a family-friendly Easter arts and crafts day at Macon Meadows – located right beside the brook – and three dedicated litter-picking days organised in collaboration with Crewe Town Council’s Clean Team.

Bentley staff also participated in a volunteering day at Macon Meadows, helping to remove Himalayan balsam – an invasive species dominating the riverbanks – and carrying out other vital environmental improvement work, such as litter picking and water sampling.

It has been important to ensure local voices are heard. Drop-in sessions at both Macon Meadows and in Crewe town centre provided information about the proposed restoration plans and invited community feedback. Students from Reaseheath College contributed to the project, monitoring



The Bentley Environmental Foundation, Audi and The River's Trust's Panel Discussion at the 2024 London Greentech Festival attracted over 700 attendees

river insects, gaining hands-on experience and developing valuable citizen science experience to support the ongoing ecological assessments.

**Intergenerational involvement**

Further opportunities for learning and engagement included willow-spiling workshops, pond-life identification sessions and additional Himalayan balsam removal efforts by members of Hungerford Road Allotments and pupils from St Thomas More School. The initiatives helped to foster environmental awareness and promote intergenerational community involvement.

These efforts have been reinforced by collaborative work with local farmers in the Valley Brook and Englesea Brook catchments to reduce pollution and improve water quality across the wider catchment. This joined-up approach ensures the resilience of Valley Brook and its surrounding landscape, not just for today, but for future generations.

“Our partnership with the Bentley Environmental Foundation to deliver on plans to restore parts of the Valley Brook shows how together we can improve river catchments and provide new green

spaces for wildlife and people to enjoy,” says Alex Adam, Deputy Director of Strategic Development and Stewardship at The Rivers Trust. “By supporting local young people to take their first steps into the environmental sector, we’ve been building the capacity and skills required to deliver long-term environmental benefits. We are excited to see the new wetlands come to life and the positive impact restoring this section of the Valley Brook has for the water environment and local community.”

Looking ahead, the next big milestone for the project is the river restoration itself, along with the creation of new wetlands. As construction gets underway, plans are already in place for further involvement from the community and staff at Bentley. They will be planting up the wetland spaces and shaping a vibrant haven along Valley Brook for both people and wildlife to enjoy.

This collaborative, catchment-based effort showcases how investment, partnership and local engagement can transform a struggling waterway into a thriving ecosystem and leave a lasting legacy of environmental care and community connection.



# Reviving the river

The Bentley Environmental Foundation, with the Ferry Porsche Foundation and the Audi Environmental Foundation, has joined everwave on a clean-up mission in Thailand's capital Bangkok

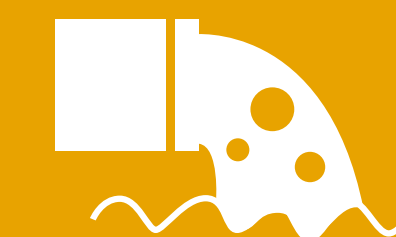
everwave

## In numbers

Funding from the Bentley Environmental Foundation is supporting everwave to eliminate river pollution in Bangkok and raise sustainability awareness among children...



(230 miles) is the length of Thailand's Chao Phraya River, which flows from the north of the country through Bangkok to the Gulf of Thailand



**385 tonnes**

(379 imperial tonnes) of waste flows from the river into the ocean every year

**20 tonnes** (19.6 imperial tonnes) of rubbish per month is collected from the Chao Phraya by everwave's smart boat



**120 pupils across four schools, reaching a total of 1,200 schoolchildren**, have participated in an innovative schools initiative to empower students to tackle pollution in their city







Thailand's dynamic growth is reflected in its fast-paced urbanisation and economic advancement. To support this progress, the Thai government introduced a national waste strategy in 2017, which set goals for significant improvements by 2036. As efforts continue, attention is also turning to key waterways in the country.

The Chao Phraya River, also known as the River of Kings, flows through the heart of Bangkok. A lifeline of trade and tradition, the river has become

increasingly burdened by pollution, carrying an estimated 4,000 tonnes (3,936 imperial tonnes) of plastic waste annually into the Gulf of Thailand, a result of direct dumping and overflow of mismanaged land-based waste.

To help clean up the Thai capital's river, the Bentley Environmental Foundation, with the Ferry Porsche Foundation and the Audi Environmental Foundation, has extended its support to everwave, a German-based green start-up. The organisation is leading a pioneering mission on the Chao Phraya,

combining cutting-edge technology with sustainable infrastructure and community-based education.

Since launching its operations in Thailand in 2023, everwave has implemented a four-pillar strategy: detect, collect, recycle and inspire. In 2024 alone, it removed approximately 108 tonnes (106 imperial tonnes) of waste from the city's waterways, collecting up to two tonnes (1.9 imperial tonnes) in a day at its peak. Central to its success is a high-tech garbage collection boat, CollectiX, equipped with





drones, cameras and AI-driven systems. This vessel skims the river and its canals of Bangkok, identifying and retrieving waste before it reaches open waters.

Thanks to support from its partners, everwave has also established a dedicated material recovery facility as well as placing bamboo-made litter traps in the Phasi Charoen district, an area with an extensive network of canals. Here, waste collected from the water is first weighed to monitor accumulation, then meticulously sorted into two primary streams: recyclables, which are further categorised and sold to local recyclers; and non-recyclables, which are safely processed through environmentally responsible incineration.

A key part of everwave's environmental improvement initiative in Thailand is an educational programme. Designed to engage schoolchildren, the project aims to raise awareness about the impact of waste on the Chao Phraya and encourage a deeper understanding of sustainability through hands-on learning.

Adopting a 'learning by doing' philosophy, the programme invites students to take part in clean-up efforts along the Phasi Charoen – one of the city's most affected waterways. This canal ultimately flows into the Gulf of Thailand, carrying 385 tonnes (379 imperial tonnes) of waste to the sea each year.

In the classroom, the lessons continue. Students are guided in creating recycling systems in their schools, learning not only about waste cycles and the harmful effects of plastic, but also the value of recyclable materials as part of a circular economy. The initiative, supported by local partner the Terracycle Thai Foundation, fosters long-term behavioural shifts by

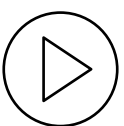
weaving together environmental science, teamwork and entrepreneurial thinking.

This holistic approach – blending education, community engagement and state-of-the-art technology – is significantly reducing the volume of waste entering the Chao Phraya, while also laying the groundwork for a more resilient waste recovery system.

"The project in Bangkok has made a significant contribution to the local waste management efforts," explains Clemens Feigl, CEO at everwave. "In addition to collecting over 108 tonnes of plastic and waste in 2024, we successfully established a sorting facility and engaged local authorities in the process... Our goal is to increase our impact on a daily basis, create more local jobs and collect as much waste as possible."

He adds that if all goes well, the Chao Phraya can be waste free in 10 to 20 years. It is an optimism shared by Dr Tilman Floehr, Chief Technology Officer at everwave: "The funding from Bentley Environmental Foundation, Audi Environmental Foundation and Ferry Porsche Foundation enabled us to create a tangible impact on the waste situation in the canals of Bangkok."

As the initiative progresses, it serves as a model for other cities facing similar challenges, illustrating the power of collaboration and innovation in tackling the pressing issue of waste management. The journey towards a waste-free Chao Phraya is a testament to the collective efforts of organisations united by a shared vision of a sustainable future.



Watch the video to find out more about the everwave clean-up.





CHAPTER TWO

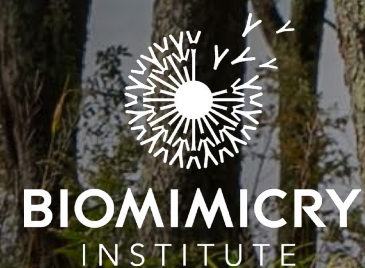
# Enabling Changemakers





# Design inspired by nature

In partnership with the Biomimicry Institute's Ray of Hope Accelerator programme, the Bentley Environmental Foundation is supporting innovative nature-inspired startups across the world



Ray of  
**HOPE**  
ACCELERATOR



## In numbers

Over the past two years, the Bentley Environmental Foundation has supported the Ray of Hope Accelerator to help changemakers lead the way...

**20** early-stage startups have been supported since 2023

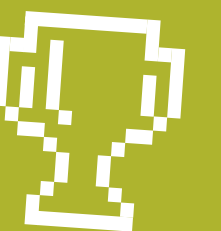


These 20 startups hail from **11 different countries** with **35 per cent** of these ventures being **women-led**

**10 weeks** **>>>** **6 months**

What began as a 10-week prize competition in 2020 has transformed into a powerhouse 6-month accelerator, unlocking deeper collaboration, stronger investor connections and expert mentorship

**8 award-winning science animations** were created to support founders in communicating their breakthrough nature-inspired technology with the world



CLIMATE  
WEEK **NYC**  
°CLIMATE GROUP

The Accelerator made its debut at New York Climate Week, attracting more than **200 corporate partners, investors and mentors**, who rallied behind these innovators





Author and naturalist Janine Benyus has a simple message for innovators: when solving a design problem, look to nature first.

For decades, Benyus has been advocating biomimicry, urging us to take inspiration from the natural world to solve modern-day human challenges. In 2005, she co-founded the Biomimicry Institute, a US-based non-profit that aims to create a nature-positive future.

“Biomimicry is innovation inspired by nature,” she explains. “Before we design anything, we ask what nature would do here? We’re looking at its processes, its recipes and its chemistries that are so life-friendly. We’re also looking at its

strategies on an ecosystem level. How do all these organisms interact in a way that enhances this place?”

The Bentley Environmental Foundation has partnered with the Biomimicry Institute to support one of the non-profit’s keystone programmes: the Ray of Hope Accelerator, created to help nature-inspired startups to scale systemic solutions to environmental challenges. The 10 startups selected each year for the six-month programme each receive US\$15,000 as well as tailored coaching, investor introductions and comprehensive training materials, covering everything from biodiversity to science storytelling and founders’ mental health. They also

attend a four-day nature retreat, designed to grow a thriving support community and to reconnect with themselves, their mission and the natural world.

Since its inception five years ago, the programme has supported 49 initiatives from around the world and across sectors. “The Bentley Environmental Foundation is our partner in creating the conditions for innovation, and we are proud to come together to enable nature’s wisdom to lead the way into the future through transformative ventures,” says Sarah McInerney, Director of Innovation at the Biomimicry Institute. “With the help of Bentley, we are creating something truly extraordinary.”



## Success stories

Read on to discover more about the remarkable ventures the Bentley Environmental Foundation has supported

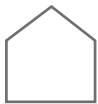
### MYCOCYCLE: THE POWER OF MYCELIUM

Inspired by the circular processes in forests that return end-of-life organic matter back into healthy soil, Chicago-based science tech company Mycocyte is harnessing the biochemical and decomposition superpowers of mycelium to break down the toxic chemicals in construction debris and pollutants. The resulting mass produced by the mycelium is fire- and water-resistant, exceptionally light and tough, and can be used in the production of flooring, concrete, insulation products and more, replacing petrochemical polymers currently in use.

“Participating in the Ray of Hope Accelerator programme afforded me the opportunity to connect with like-type investors and businesses,” says Joanne Rodriguez, Founder and CEO at Mycocyte. “When building a nature-inspired innovation, understanding how to position the technology at an industrial scale is vitally important. Learning from the mentors allowed me to align on how to communicate nature-inspired technologies to investors and gain investment as a result.”



Watch the video to find out more about Mycocyte’s innovative fungi-inspired waste solution.








### GREENPOD LABS: FRESH FOOD SAVER

Between 40 to 60 per cent of the produce we grow spoils before we can eat it, especially in areas without developed cold storage facilities and processes, contributing to significant food waste while a billion people around the world face hunger. GreenPod Labs, based in Chennai, India, has devised bio-inspired packaging sachets that help produce stay fresh for longer by mimicking the natural chemical signalling of plants. By releasing plant-specific and plant-based volatiles that waft onto the product, they trigger several chemical and physical responses, including controlling the opening of 'breathing pores' and reducing the production of gases that encourage ripening without the need for cold storage processes.

"Being part of the Biomimicry Institute cohort through the Ray of Hope programme was one of the best experiences for us as a company," says Deepak Rajmohan, Co-founder at GreenPod Labs. "We had the opportunity to learn from other experts and other startups. The team is super helpful in supporting us all in every possible way."

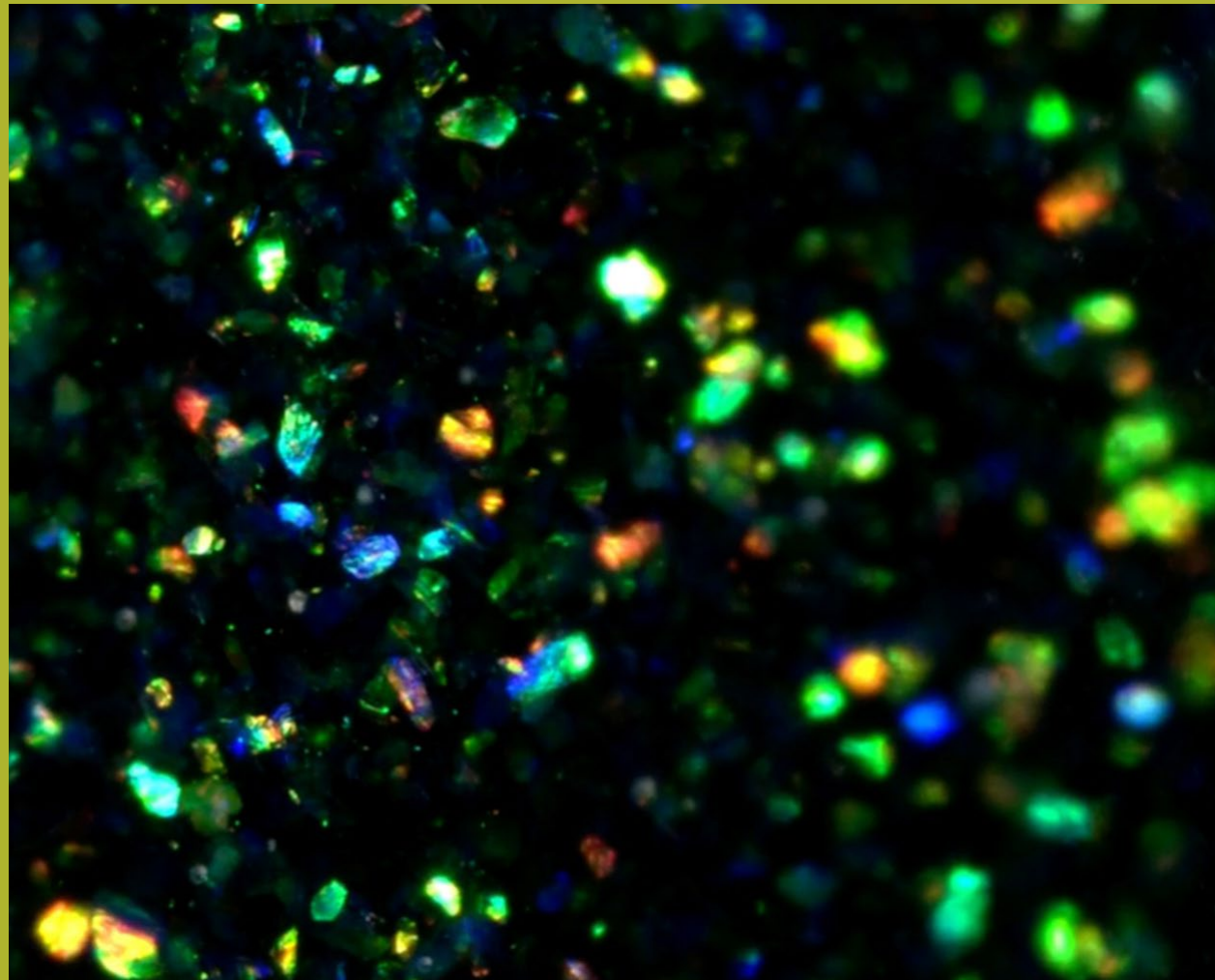
 Watch the video to find out more about the technology behind GreenPod Labs' packaging sachets.

### SPARXELL: THE FUTURE OF COLOUR

Modern pigments and dyes often get their colour from minerals or oil and can be a leading contributor to microplastic pollution. UK startup Sparxell is working to transform the industry with its biodegradable, non-toxic colour pigments made from plant-based cellulose for use in cosmetics, fabrics, paints and packaging. Its process is inspired by the physical micro-structure that gives some plants, birds and butterflies their magnificent colours.

"The Biomimicry Institute is a unique institution that opens up new opportunities to utilise nature to design the future of the planet," says Simon Kew, COO at Sparxell. "Biomimicry is an underutilised principle in the quest to design and develop new technologies that will decarbonise and detoxify the planet whilst also showcasing the power of nature to deliver new performance benefits that cannot be realised with traditional approaches."

 Watch the video to find out more about Sparxell's revolutionary colour bio-technology.




### CORAL VITA: RESTORING REEFS

The planet has lost more than half of its living coral since 1950 due to climate change, ocean acidification, overfishing and pollution. Coral farming helps restore reefs, but traditional ocean-based farms are limited in scale, species diversity and geography, and the corals they cultivate are still vulnerable to the negative effects of climate change.

The Ray of Hope Accelerator has supported startup Coral Vita, located in Freeport, Grand Bahama, to restore dying reefs. Inspired by the healing properties of coral, the team incorporates a cutting-edge method known as micro fragmentation to grow coral up to 50 times faster, in high-tech, land-based farms, to boost growth, species diversity and climate change resilience.

Coral Vita uses a for-profit commercial model, with the goal of finding more financially sustainable pathways to fund ecosystem-scale conservation, envisioning large-scale, high-tech, land-based coral farms.

 Watch the video to find out more about how Coral Vita is supporting reef restoration.





# Charting a new course

The Bentley Environmental Foundation is collaborating with Forum for the Future to guide companies to the next frontier of value creation

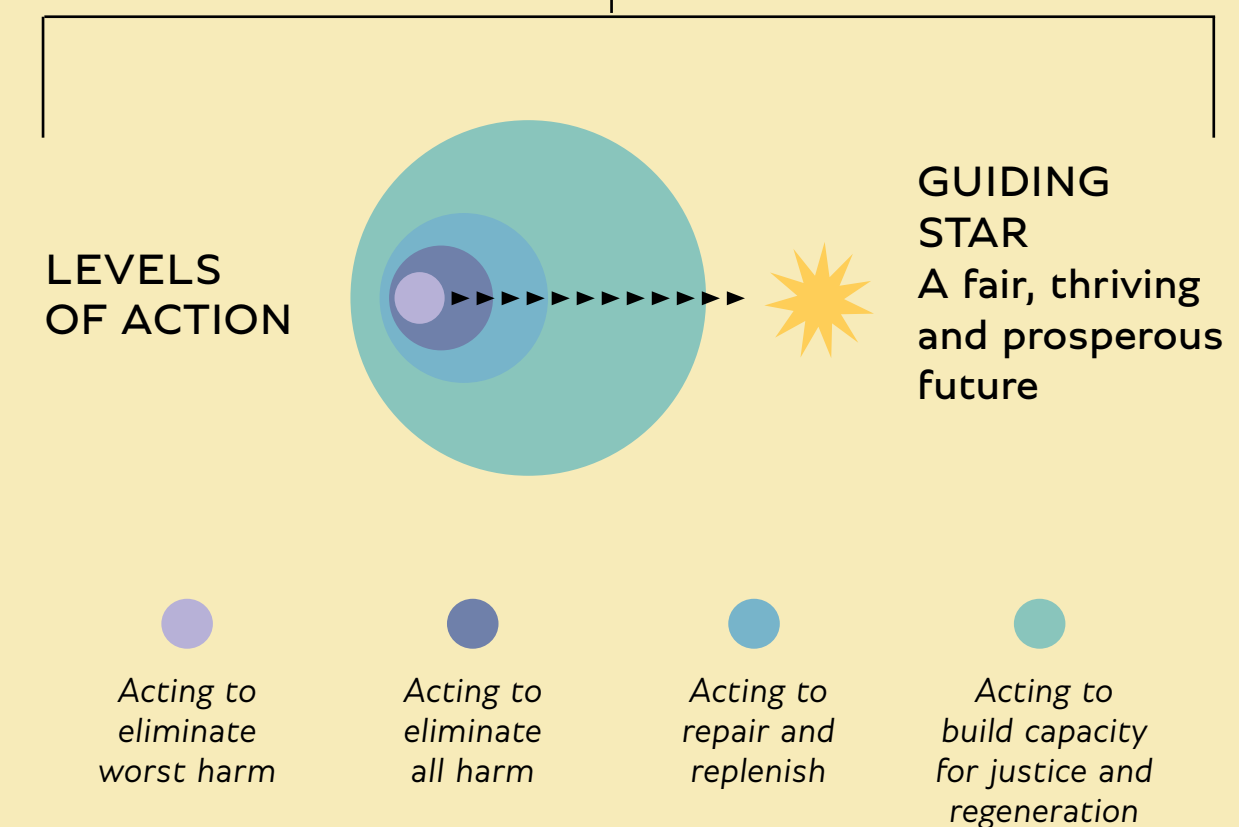
FORUM  
FOR THE  
FUTURE

## A practical guide to business transformation and value creation in turbulent times

Forum for the Future's *Business Transformation Compass 2.0* shows how a just and regenerative mindset is the key to unlocking new ways of working...



### JUST AND REGENERATIVE MINDSET





Businesses wield significant influence on the world around us, and as major challenges such as climate change, biodiversity loss and structural inequality continue to escalate, the need for meaningful private sector action grows.

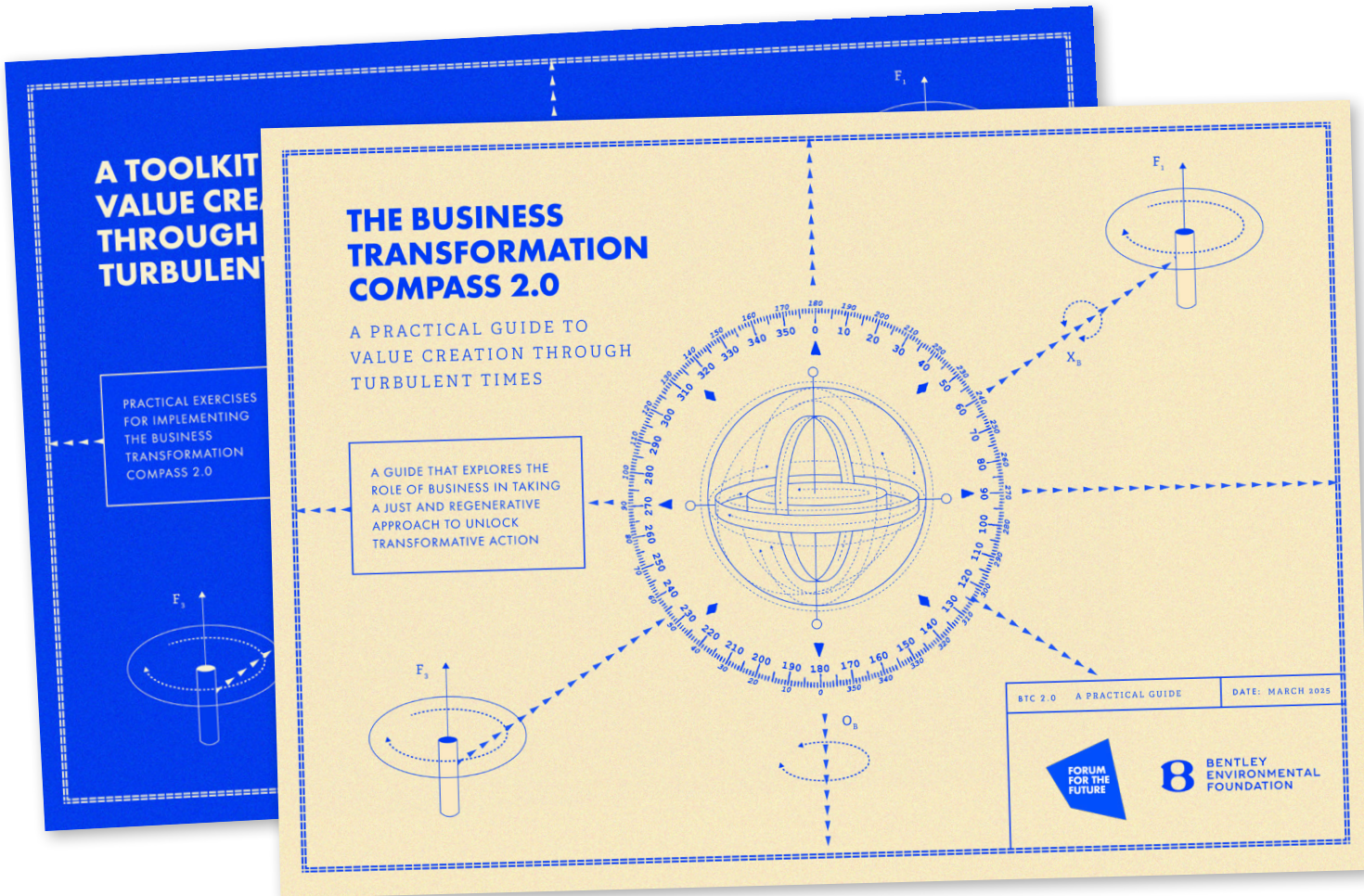
Business leadership is critical to shaping a future where everyone has an opportunity to flourish. But doing so requires moving beyond conventional sustainability models. It requires rapid evolution and innovation to meet people’s changing needs.

In 2021, Forum for the Future launched the *Business Transformation Compass* (BTC), a practical guide to help organisations take meaningful action towards a prosperous, fairer and sustainable future. Building on its success, Forum for the Future – now in partnership with the Bentley

Environmental Foundation – have created a new version: the *BTC 2.0*.

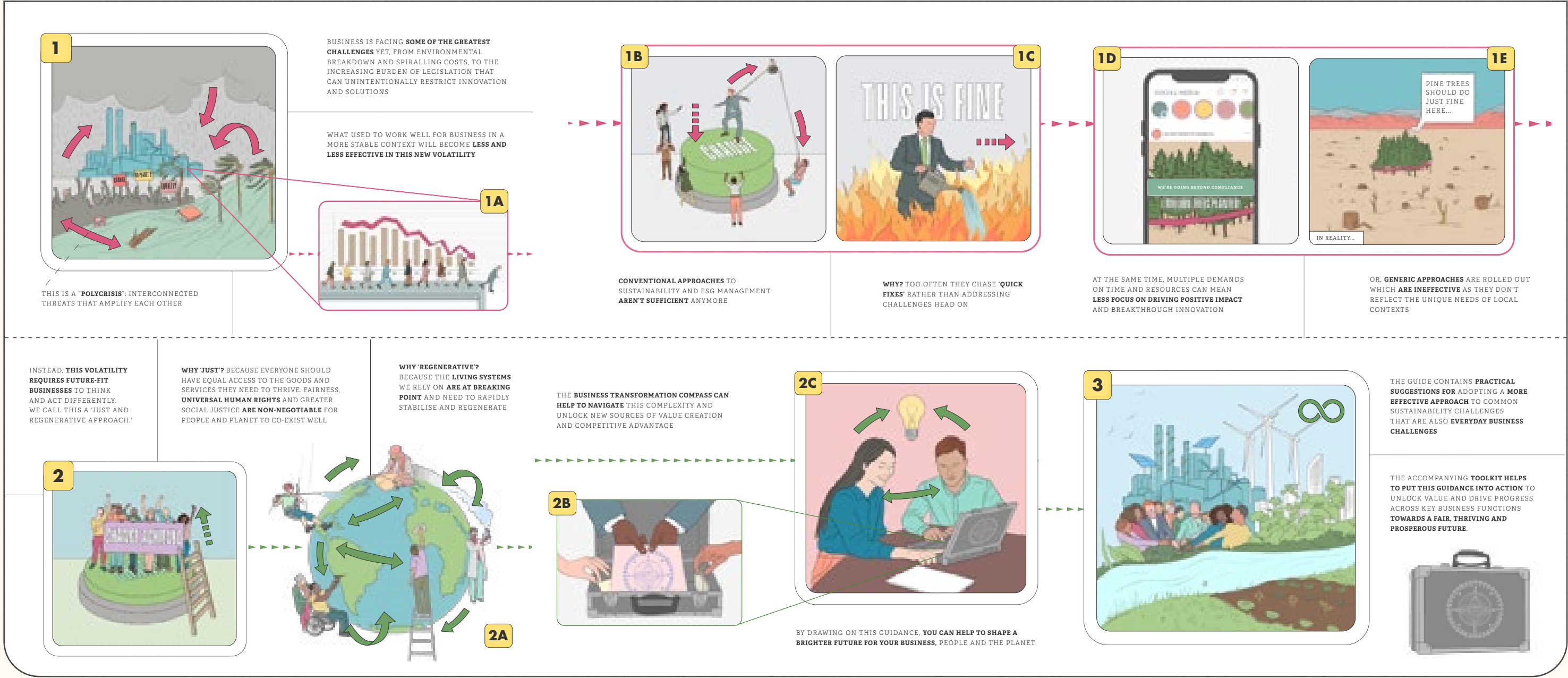
Aimed at the private sector – particularly in the UK, Europe and the US – the *BTC 2.0* offers guidance on how businesses can embed just and regenerative practices into their strategies and business models.

This update comes at a critical time. In a rapidly evolving world, businesses face a complex landscape, marked by geopolitical instability, economic uncertainty, environmental challenges and shifting regulatory demands. Yet, within this uncertainty lies an opportunity: the chance to lead the transition to a more sustainable future. The *BTC 2.0* helps navigate this complexity, equipping changemakers across key functions – from finance and procurement to marketing and HR – to drive effective change.



# NAVIGATING AN ERA OF VOLATILITY

(AND HOW TO THRIVE, NOT JUST SURVIVE)





CASE STUDY:

A GREEN ENERGY TRANSFORMATION

The *Business Transformation Compass 2.0* includes case studies designed to showcase what a just and regenerative mindset can look like in practice. The subject of one case study is a leading European energy company that transformed its business through “technological innovation, steep learning curves and difficult strategic choices”. When starting its transformation journey in 2009, it was one of the most coal-intensive energy companies. Today, it is a global leader in renewable energy.

Embracing a just and regenerative mindset

The company’s evolution wasn’t just about switching energy sources; it was about adopting a mindset that prioritised environmental sustainability and long-term viability. It recognised the impact of the climate crisis and the need to pivot to provide customers with energy in the short-term, the medium-term and the very long-term. It remained committed to exploring the potential of renewable energy despite the challenges of transformation.

The business value of going green

With a commitment to making green energy more accessible and affordable, the company has played a major role in expanding the global offshore wind sector, now holding a significant market share. In 2024, the company saw strong growth, with a notable rise in operating profits and increased earnings from its offshore wind projects. It has also advanced its climate goals and is on track to meet its science-based emissions reduction target well ahead of its 2050 timeline.

Tool for transformation

The energy company has been using the *BTC* since 2023, describing it as the most practical and concrete tool it has encountered for applying regenerative thinking. It noted that the *BTC* helped clarify what ‘regenerative’ means in its context, sparking more focused discussions and enabling more constructive conversations around its sustainability ambitions and what comes next on its journey.



A guide for tomorrow’s leaders

Designed for practical application, the *BTC 2.0* features real-world case studies from multiple sectors, along with a supplementary toolkit, helping teams apply these approaches in their specific contexts and highlighting the potential for long-term value creation.

Bentley Environmental Foundation funding has also enabled Forum for the Future to put the *BTC 2.0* into the hands of tomorrow’s leaders. It is engaging business schools to integrate the learning from the guide into the curriculum and ultimately give future generations the practical know-how and mindsets to drive transformational change through the power of business.

“At Forum for the Future, we believe transforming the way business operates is essential for a just and regenerative future. The continued support from the Bentley Environmental Foundation has enabled us to revisit and deepen work that has already sparked important shifts in how business creates positive impact for a brighter future,” explains Dr Sally Uren OBE, Executive Director and Chief Acceleration Officer at Forum for the Future. “This next phase of the *Business Transformation Compass* helps businesses navigate complexity with greater confidence and with a more focused eye on impact. We are proud to partner with the Bentley Environmental Foundation and grateful for their commitment to long-term, transformative change.”

 Explore the *Business Transformation Compass 2.0* [here](#)





# The nature fix

The Bentley Environmental Foundation in partnership with partner Hubbub is supporting local nature groups across the UK, encouraging more people to enjoy the benefits of nature, learn new skills and care for their local environment



Registered charity no. 1158700

## In numbers

The Bentley Environmental Foundation-supported Community Nature Network is helping enhance green spaces in the UK...



**309 groups** have now joined the Community Nature Network

The network also has **653 individual members**, with access to resources



## 26 groups

received funding of up to £5,000 to develop new or enhanced green spaces

**3,871 direct beneficiaries** (participants in funded groups)



## 46,000+

**indirect beneficiaries** (participants in all network groups)



**83 per cent** of network participants report improved wellbeing and **76 per cent** feel closer to nature. An impressive **74 per cent** are learning new skills and **69 per cent** say they feel closer to other people







We know that spending time in nature is good for us. Research consistently shows it can reduce stress, boost our mood and improve cognitive function. Yet a third of people in the UK spend less than an hour a week in nature. What's more, access to nature is not fairly shared: new spaces, and new ways to engage with it, are needed. Thanks to support from the Bentley Environmental Foundation, the award-winning charity Hubbub has brought

more people closer to nature. Funding has enabled 26 community groups in the UK to create or improve green spaces, with grants available of up to £5,000 each. It has also seen the creation of the Community Nature Network, which aims to inspire grassroots environmental action by providing learning resources, funding opportunities and a place where groups can share knowledge and help each other. "The Community Nature Network aims to connect the dots and give like-minded

community groups the resources and guidance they need to be able to respond to and fulfil local environmental and social needs," explains Gavin Ellis, Director and Co-Founder at Hubbub. "It's allowing them to share their success stories and how they've overcome barriers. The incredible people involved in setting up and running these kinds of initiatives often lack funding, time and headspace. We want to help shine a light on the amazing work they do and build a supportive and effective network



## AN OASIS IN LONDON

The Hoxton Legal Trust provides free advice for people struggling with housing, cost of living and other issues. It also runs a community garden, providing a green space for people living and working in a densely populated area of London, and helping to reduce isolation, break down barriers and boost social cohesion.

With support from the Bentley Environmental Foundation-backed Community Nature Fund, the trust has launched Growing Together, a project encouraging locals to connect, grow their own produce and learn about organic gardening, propagation and composting. The funding has also enabled the garden to open more often, welcoming more visitors and corporate volunteers.

The community garden has significantly enhanced the wellbeing of many of those who use it. "It has helped my confidence and mental health, and given me a feeling of contributing to something outside of myself," says one regular. Another adds: "It's a very friendly, inclusive space. It has inspired me to start growing bulbs, herbs and flowers on my own balcony at home."







to allow these projects to really thrive and flourish.”

Launched in summer 2024, the Community Nature Network now has more than 300 group members. The vibrant collective welcomes all groups that are community-led, publicly accessible and committed to reaching people outside the normal ‘green bubble’. The range of initiatives are diverse, from established community gardens to experimental green roofs and faith groups seeking to grow their own vegetables.

The support of the Community Nature Network is far reaching, from providing guidance on improving fundraising activities and creating newsletters to how-to guides on composting and climate-friendly planting. And, to ensure the network is as effective as it can possibly be, the impact on green spaces is continuously measured and evaluated.

“We’re on a mission to bring people closer to nature and nature closer to people,” says Alex Robinson, CEO at Hubbub. “Research shows that spending time in nature not only improves our health, wellbeing and social connectedness, but that engaging with nature projects and community gardening initiatives also encourages people to make greener lifestyle choices overall.”

The success of the Foundation’s partnership with Hubbub is evident. So far the initiative has benefited almost 4,000 individuals directly via new grant funds and more than 46,000 individuals indirectly across all Community Nature Network group members.

“We are grateful for the Bentley Environmental Foundation’s generous support in helping make this mission a reality,” adds Robinson.

## MAKING FRIENDS

Ladybarn Community Hub in Manchester provides an inclusive, supportive and dynamic community garden where residents of all ages and backgrounds thrive. Thanks to the Bentley Environmental Foundation–Hubbub partnership, it has been able to transform a large unused garden space into a community garden with a new pond. The initiative also hosts hands-on workshops, such as bee box making. A recent mushroom log workshop attracted 20 people, and they hope to soon see native oyster mushrooms growing on the garden’s logs and in its beds.

“Being part of a community garden is the highlight of my week,” says one participant. “Not only is the diverse group made up of lovely people, it’s a welcoming open space to grow and learn together and try out new things... I can’t wait to see how the garden will evolve.”



## THE HAPPY PLACE

Project Abundance, a community interest company in Peterborough, is building an eco-friendly garden designed to enhance biodiversity and offer a peaceful, educational setting for the community. Funding through the Bentley Environmental Foundation-supported Community Nature Fund has allowed it to continue to look after its gardens, creating wildlife habitats, food production and creative workshops, including for children, and helping further connect people to nature.

“The project has improved my mental health as well as my confidence,” says one volunteer. “Nature is my happy place and the project has allowed me to build connections and grow in a space that’s comfortable and safe.”

The project started training a number of long-term unemployed people, who are now working towards employment. Two individuals, who joined with severe mental health problems, have really flourished and are now helping to facilitate other volunteers and corporate volunteer groups, passing on what they have learnt.







CHAPTER THREE

# Driving Innovative Solutions Towards Decarbonisation





# Time to act

In partnership with Climate Group, the Bentley Environmental Foundation is championing climate action in Argentina, Brazil and South Africa



Watch our video on the Future Fund here

 **CLIMATE  
GROUP**

## In numbers

With funding from the Bentley Environmental Foundation, Climate Group's Future Fund has supported the following initiatives...

### Argentina



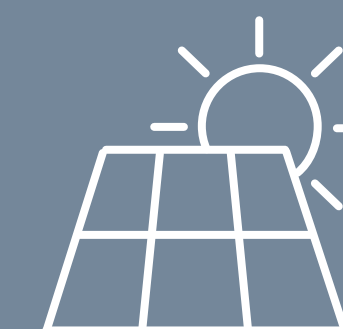
The establishment of the first air quality monitoring network in Tucumán. The system's **30+ sensors** are gathering data that will provide a baseline for research into the primary sources of air pollution

### Brazil

A groundbreaking project in the Brazilian region of Pernambuco, with **62 per cent** of local governments actively participating to develop a digital platform designed to mobilise efforts that address climate challenges



### South Africa



The creation of a **36-kilowatt solar backup system**, providing electricity for lighting and charging laptops and computers in the Maphumulo municipal offices in KwaZulu-Natal. The pilot scheme should help lay the foundations for the wider adoption of solar power as South Africa progresses to a low-carbon economy





Scientific consensus is clear: to avoid the worst impacts of climate change, global warming must be limited to 1.5°C. Achieving this requires halving global emissions within the next decade – a formidable but essential challenge.

To support this critical international shift, the Bentley Environmental Foundation has teamed up with Climate Group, an international non-profit founded in 2003 to drive collaborative action towards achieving net-zero carbon emissions by 2050.

Through its Future Fund initiative, it is empowering governments in developing and emerging economies across the world, helping local governments to access vital financial support that will enable them to explore tailored, local solutions to their climate challenges.

As the first corporate foundation to collaborate with the Future Fund, the Bentley Environmental Foundation is extremely proud of the progress made through the three capacity-building projects it has supported in Argentina, Brazil and South Africa. The success

of these initiatives lies in their ability to encourage changes in local policy, as well as to promote multi-level governance collaboration and the development of localised solutions that can be replicated on a larger scale in other areas.

All three local governments supported by this grant have now submitted a second application to the Future Fund, proposing to scale up their existing projects through a second phase and build on progress achieved so far through a new, but related, initiative as part of their climate protection activities.



CLEARING THE AIR

In Argentina, Climate Group in partnership with the Bentley Environmental Foundation has created the first air quality monitoring network in the province of Tucumán, where pollution levels increase during the dry season, posing a considerable risk to public health.

The hybrid air quality monitoring system features the country’s first Federal Reference Laboratory with US-EPA monitors, complemented by a network of more than 30 integrated environmental sensor modules. Its implementation led to a study of atmospheric pollution and an analysis of the presence of fine particles in the air. It also informed the development of public policies based on scientific evidence to effectively control sources of air pollutant emissions.

An open access digital platform was also created that allows anyone to continuously and remotely monitor the data collected.

“Thanks to this international partnership, we’ve been able to establish our first air quality monitoring network across the province,” says Eduardo Castro, Secretary of Production, Ministry of Economy and Production for the Government of Tucumán. “With sensors now tracking pollution sources and air quality, we are gaining invaluable insights to guide impactful policies that safeguard public health and enhance the quality of life for all who call Tucumán home. This collaboration represents a major step forward in our journey towards a cleaner, healthier future.”

 Watch the video and find out more about the Climate Group project in Argentina





DIGITAL EMPOWERMENT FOR CHANGE

For more than a decade, the state of Pernambuco in Brazil has implemented climate change policies aimed at reducing greenhouse gas emissions and adapting to the impacts of climate change. However, achieving lasting progress and meeting sustainable development goals requires strong coordination and collaboration across all levels of government.

The Bentley Environmental Foundation in partnership with Climate Group have supported the Pernambuco Strengthening Local Capacities for the Climate Action initiative. It aims to develop a digital platform to support local climate action, data generation, transparency and engagement across the municipalities of Pernambuco. The project has been rolled out in several stages, beginning with the formation of a working group made up of 13 regional representatives, each contributing data on key climate-related topics. Designed to be a central tool for mobilising municipal efforts, the platform will help address climate challenges, respond to local needs and strengthen collaboration across different levels of regional government.

“This cooperation is essential in guiding the state government’s actions in supporting the implementation of the climate agenda in municipalities, enabling more precise monitoring of its progress,” says Karla Godoy, Executive Secretary for Sustainability of the state of Pernambuco. “Strengthening local capacities to address climate change is a critical step toward building a more sustainable and resilient future for all Pernambuco citizens.”

The hope is that the new digital platform will also be a model for other states and regions in Brazil in helping them to find solutions to global climate challenges.

 Watch the video to find out more about the Climate Group project in Brazil



SHINING A SOLAR LIGHT

South Africa’s strategy is to transition from an energy-intensive to a climate-friendly economy, focusing on four key areas to cut emissions: energy efficiency, electricity generation, transport and carbon capture and storage. KwaZulu-Natal province is committed to regularly updating its greenhouse gas inventory to track emissions and guide its mitigation efforts. Recent data shows the energy sector is the top emitter, highlighting the need for efficiency and cleaner electricity. A partnership between the Bentley Environmental Foundation and Climate Group’s Future Fund enabled solar panel installation on Maphumulo municipal offices in iLembe district, paving the way for broader municipal adoption.

In the long term, the project is expected to boost the green economy, especially the solar PV sector, and reduce the municipality’s reliance on the national grid. Training in solar technology maintenance for local youth has also created work opportunities and built technical capacity in the community.

“Just Transition is about experience at a local level, which makes it gain a community level traction,” says Noloyiso Walingo, Director, Climate Change and Environmental Planning, Government of KwaZulu-Natal. “This project is an example of others to come, which demonstrates the simplicity of just energy transition at a local scale. In a municipal building it also translates into realisation of financial savings.”



# Power to the people

The Bentley Environmental Foundation has teamed up with Renewable World to provide clean energy solutions to the communities living around the Banke National Park in western Nepal



## In numbers

The Bentley Environmental Foundation–Renewable World partnership is piloting clean energy approaches to improve livelihoods, promote conservation and enhance safety...

**25 e-cook stoves** have been provided to the most marginalised community members, helping to reduce gas stove emissions and reliance on firewood, conserving the forest and easing human–wildlife conflict



### 3 biogas digesters

offer a clean source of fuel for cooking and organic fertiliser to grow vegetables at home

**1,250 indigenous saplings** have been planted to enhance the environment



**28 solar lamps** have been installed, reducing the risk of nighttime human–wildlife encounters



A new solar pump at Lions Park provides **25,000 litres** of water daily for drinking, irrigation and cleaning, showing how clean energy serves multiple purposes

# 16,556

The total number of people living in the Banke National Park buffer zone who have benefited from the initiative







People living near Nepal's national parks face considerable challenges with ongoing human-wildlife conflict threatening livelihoods, causing economic losses and putting both people and wildlife at risk. Among them are the Mughali and Tharu communities residing in the buffer zone of Banke National Park. Many of them were forcibly relocated during waves of infrastructure development and the establishment of national parks. This displacement disrupted cultural heritage, traditional practices and ways of life, leaving them increasingly marginalised. Today, strict buffer zone regulations further limit their options as they struggle to make a living from forest resources, crop cultivation and livestock rearing under very difficult conditions.

With support from the Bentley Environmental Foundation, Renewable World has co-created the CLASS Project. Designed to improve the lives of 1,650 people living in the buffer zone of the national park – a 500 km<sup>2</sup> (193 square miles) protected area in western Nepal – it is piloting clean energy approaches to improve livelihoods, conservation, safety and sustainability. “Due to limited access to training, finance and energy, the communities have few income-generation alternatives and currently their livelihood options are subsistence farming and livestock raising,” explains Thakur Thapa, Country Director of Nepal at Renewable World. “They have small landholdings, which are often raided by wild animals, including boars and monkeys, and livestock rearing



### LET THERE BE LIGHT

For those living in the Gavar Valley near the park, there is the constant fear that leopards and other predators will threaten them or take their animals, especially at night.

Take 14-year-old Tara (right, with her father), a ninth-grade student, who leaves home by 5:30am to attend her morning classes. She is afraid of the dark, especially with so many reports of wild animals attacking livestock and her fears deepened when a leopard killed her pet dog.

With help from the Bentley Environmental Foundation and Renewable World, 28 solar lamps have been installed along roads where wildlife attacks are most common, making early morning or late night travel safer for Tara and others in her community. The lighting has also made it easier for farmers to transport milk at dawn, while helping residents feel less isolated and more connected, encouraging visits to neighbours and participation in evening events. Families no longer need to rely on costly torchlights or kerosene lamps, making daily life not only safer but also more affordable.







– particularly goat raising – is vulnerable to predation by leopards and tigers. The communities also enter the park area to collect firewood and fodder, which is illegal and puts them at risk from animal attacks.

“Their livelihoods are also under threat from climate change, which has caused the depletion of forest and water resources, with prolonged periods of droughts and flash floods. A higher incidence of pests and diseases is also impacting productivity of crops, such as rice and potatoes.”

There are further challenges. Recent green initiatives – including Lions Park in the Gavar Valley, a local environment and conservation centre – are beginning to fail due to a lack of clean energy and water, with homestays struggling to manage

the waste of 25,000 annual tourists.

The scale of the challenge is significant, but thanks to the Bentley Environmental Foundation and Renewable World partnership, the prospects for local communities are improving. The hope is that by enhancing their access to clean energy, they will feel empowered to develop sustainable livelihoods.

Clean energy initiatives include the installation of biogas systems that convert livestock manure into clean cooking gas and organic fertiliser, supporting both household energy needs and sustainable farming practices. A solar-powered water lift now provides continuous access to water for irrigation and ensures a reliable 24/7 supply for washing facilities in Lion’s Park.

At the same time, the community is exploring eco-tourism opportunities while strengthening waste management systems to tackle the issue of unmanaged waste and promote a cleaner, more sustainable environment.

Efforts to strengthen conservation are being integrated with initiatives to improve livelihoods. Thapa explains: “Training programmes on sustainable livestock rearing are helping to reduce the environmental impact of traditional practices, which is minimising forest encroachment and easing pressure on local ecosystems – ultimately helping to reduce human–wildlife conflict.

“A solar-powered water lift is being used to irrigate saplings, while the distribution of e-cook stoves is reducing

the community’s reliance on firewood and deforestation in the protected area.

“We’ve also installed solar lamps in areas that carry a high risk of encounters between humans and wildlife as well as creating platforms where communities can present their issues to the national park authorities and local government.”

By integrating renewable energy solutions with community-led development, the collaboration between Bentley Environmental Foundation and Renewable World is yielding significant benefits for people living near Nepal’s Banke National Park. “They are enjoying a cleaner environment, much improved personal safety and better livelihood opportunities,” adds Thapa, underscoring the project’s positive impact.



## FORGING AHEAD

Kalu Sarki (left) is a member of the Dalit caste and has faced a lifetime of inequality, discrimination and extreme poverty. His sole source of income comes from crafting and selling axes and knives.

Previously, he relied on a gas stove, but without the means to buy fuel, he was forced to illegally collect firewood from the nearby national park. This has not only contributed to local deforestation but has also resulted in fines of 500 rupees – equivalent to an entire day’s earnings – each time he was caught. Gathering wood meant spending a full day in the forest, two to three times a week.

Now, thanks to the partnership between the Bentley Environmental Foundation and Renewable World, Sarki has received an e-cook stove. It has transformed his daily life, providing clean, accessible energy without the health risks of smoke and fumes. With more time to devote to his craft, he’s been able to increase production – and with it, his income.





# The future is now

In partnership with Project Drawdown, the Bentley Environmental Foundation is boosting funding for science-based climate solutions

PROJECT  
DRAWDOWN®

## In numbers

As a founding partner, the Drawdown Capital Coalition is convening a broad community of philanthropists and investors to learn from the leading climate scientists...



The Drawdown Capital Coalition has assembled a network of **600+ climate-focused philanthropists, investors and advisors**, fostering collaboration and guiding impactful climate investments



## 200 people

from the business, philanthropy and investor sectors registered for the Drawdown Capital Coalition's first Deep Dive, held in July 2024, which engaged **100+ members** in live sessions. The multi-week workshop focused on the private sector's role in halting tropical deforestation, which accounts for **11 per cent of global emissions**

## 406 people

registered for the second Deep Dive workshop in January 2025, drawing **171 in-person attendees**. It explored the private sector's contribution to reducing food waste, responsible for **8 per cent of global emissions**







In an era where the climate crisis intensifies daily, a first-of-its-kind initiative supported by the Bentley Environmental Foundation is harnessing the power of philanthropy and private capital to drive meaningful change. The Drawdown Capital Coalition unites impact investors, philanthropists and their advisors in a collaborative community aimed at channelling funds into strategic, science-based solutions to climate change. By aligning financial acumen with environmental urgency, it seeks to transform capital into a catalyst for sustainable progress. The programme is run by Project Drawdown, a trusted, science-based and

independent guide for effective climate action across the globe. As a US-based non-profit, its mission is to help the world stop climate change – as quickly, safely and equitably as possible. Built on three pillars – science, stakeholders and stories – it believes that good science is needed to guide effective climate action and that science must be shared in actionable and compelling ways through stakeholder engagement and powerful storytelling.

**Finding science-based solutions**  
The urgency to address the planet’s environmental challenges has provided a surge of private capital to support climate mitigation efforts. Yet funders often

find themselves navigating a complex landscape, making it difficult to identify science-based, high-impact opportunities. In a TED talk in July 2023, Dr Jonathan Foley, a renowned climate scientist, writer and speaker and the Executive Director at Project Drawdown, summed up the challenge: “There is so much noise, so much confusion, all these ideas out there. How do we figure out what works, what doesn’t and where we should focus?” “This is where science can help us. We can do a ‘meta-analysis’, where we collect all the analysis, all the data and look at it and figure out which solutions are the biggest, which are the most effective and which are ready to go now... Let’s focus





USING SCIENCE TO GUIDE CLIMATE ACTION

The Drawdown Roadmap offers a five-part, science-based strategy to accelerate climate solutions, providing investors, philanthropists, governments, businesses and communities with prioritised actions to effectively reduce greenhouse emissions, which it says must be the focus now. It warns that just as emissions have been building up in the atmosphere for many decades, attempts to stop climate change will require decades of cumulative action. It urges the deployment of climate solutions now with whatever tools we have.

The five steps to accelerate climate solutions:

- ACROSS SECTORS

The contribution of greenhouse gases varies greatly across sectors. To stop climate change, we need to reallocate our investments of time, energy and money so they align correspondingly.
- ACROSS TIME

Even a tiny reduction in greenhouse gases compounds over time to make a huge difference later.
- ACROSS GEOGRAPHIES

Where we apply climate solutions is as important as when. Whether halting deforestation or reducing methane emissions, every climate solution has hotspots, and we should focus there first.
- TO MAXIMISE CO-BENEFITS

Climate change is not the only problem. Preferentially deploying solutions that, for example, reduce poverty, boost biodiversity or cleanse water can increase the appeal of, and resources allocated to, solving climate change.
- TO ELIMINATE BARRIERS

Policies, habits, worldviews, misperceptions and more hamper the application of climate solutions. Identifying and eliminating such barriers will enable rapid movement toward a stable climate.

on these and less on the ones that are kind of a distraction.”

Bentley Environmental Foundation support has allowed the Drawdown Capital Coalition to guide funders with the latest climate science, helping them to find solutions that deliver maximum impact in the least amount of time. Since its launch in late 2023, it has expanded its community to more than 600 climate-focused philanthropists, impact investors and advisors, who have all benefited from access to Project Drawdown-led programming and resources.

Additional opportunities for coalition members include interactive workshops and in-depth webinars. The Drawdown Capital Coalition has hosted two Deep Dives, focusing on the public sector’s role in halting tropical deforestation and reducing food waste respectively. These workshops give members a better understanding of the powerful levers at their disposal to scale climate solutions. In addition, Drawdown Briefs, hosted by expert scientists, have transitioned into monthly public webinars, engaging a broader audience.

Capital for impact

The Drawdown Capital Coalition also shares Project Drawdown’s climate action priorities framework (left) through seminars, public webinars and one-on-one advising sessions, helping guide funders towards climate solutions. From conversations with family foundations to impact investors, it has informally helped dozens of funders understand climate priorities to design portfolios that effectively allocate capital for impact. It has also connected several funders with

outside experts and partners to deepen their engagement, helping to build a stronger and more unified climate solutions ecosystem.

Dr Foley is confident that the programme will go from strength to strength, deploying the most effective, science-based strategies to counter climate change. “As a result of this collaboration, we will be able to help philanthropists and investors around the

world – elevating the scientific rigour of their portfolios and significantly increase investments in the most effective climate solutions,” he says. “Thanks to the founding investment by the Bentley Environmental Foundation, we are building a programme that will influence tens of billions of dollars in climate investments, accelerating the world towards effective climate action.”

