



By appointment
to HM The Queen
motor car manufacturers
Bentley Motors Limited
Crewe Cheshire



By appointment
to HRH The Prince of Wales
motor car manufacturers
Bentley Motors Limited
Crewe Cheshire



BENTLEY

BENTAYGA EXTENDED WHEELBASE RANGE



Bentayga Extended Wheelbase Mulliner (V8) WLTP drive cycle: fuel consumption, mpg (l/100 km) – Combined 22.1 (12.8). Combined CO₂ – 296 g/km.



Contents:

INTRODUCTION 3

DESIGN 7

ENHANCED EXPERIENCE 11

PERFORMANCE 18

TECHNOLOGY 22

PERSONALISATION 28

WORLD OF BENTLEY 41

SPECIFICATIONS & OPTIONS 44

Bentayga Extended Wheelbase A (V8) WLTP drive cycle: fuel consumption, mpg (l/100 km) – Combined 22.1 (12.8). Combined CO₂ – 296 g/km.

Spacious exploration.

You can now enjoy the height of comfort and luxury in four formidable new SUVs: the Bentayga Extended Wheelbase, Bentayga Extended Wheelbase A, Bentayga Extended Wheelbase Azure and Bentayga Extended Wheelbase Mulliner. Meticulously designed for journeys that inspire, extraordinary performance fuses with extreme comfort for a truly unforgettable experience – whether driving or being driven.

Unrivalled Bentley design flows through the longer bodywork of these luxury SUVs, hinting at the remarkably spacious cabin. The elegant and timeless aesthetic foretells the sanctuary you'll find within. While, in the driver's seat, you'll discover the promise of an effortless drive.

Behind the wheel, Bentley Dynamic Ride and All-Wheel Steering adapt to your surroundings, creating an exceptional driving experience in all conditions, and at all speeds.

As a passenger, the extended wheelbase creates a class-leading rear cabin space. Recline and relax as stunning scenery or city life passes by, taking in everything the world around you has to offer.

All Bentayga Extended Wheelbase models unite luxury and performance with enhanced features for your comfort and enjoyment. The Bentayga Extended Wheelbase A adds a wealth of luxurious touches, while the Azure enhances wellbeing even further, for driver

and passengers alike. The Bentayga Extended Wheelbase Mulliner, meanwhile, represents the pinnacle of the range, setting a new benchmark for SUV luxury.

Look forward to extraordinary journeys in the world's most luxurious SUV. Visit the Bentley **website**.

Bentayga Extended Wheelbase Azure (V8) WLTP drive cycle: fuel consumption, mpg (l/100 km) – Combined 22.1 (12.8). Combined CO₂ – 296 g/km.



Bentayga Extended Wheelbase A. Heightened luxury.

The Bentayga Extended Wheelbase A represents a new level of refinement – a vehicle in which every detail has been thoughtfully crafted for the comfort and relaxation of its occupants.

From the outside, its elevated status is unmistakable, thanks to its eye-catching 21" five twin-spoke wheels, featuring a new grey-painted and bright-machined finish. 'A' badges on the doors make the car's identity clear, while a stunning, polished chrome, vertical-varied front grille makes its arrival impossible to ignore.

Inside, the emphasis is on comfort and obsessive attention to detail. The Front Seat Comfort Specification is standard, offering a full range of heating, ventilation and massage functionality to every occupant. This is a cabin that doesn't just feel good, however. It looks truly incredible. With the Colour Specification offered as standard, it gives you a virtually limitless choice of hide colour combinations. Optional contrast stitching adds yet more visual interest.

Sustainable options include three different open pore veneers. In addition to a more minimalist appearance, they require less lacquer, making them a more planet-friendly choice.

With an 'A' badge on the fascia and embroidered onto each seat, there is detail to be appreciated wherever you look. Even the new overmats at your feet have a more sumptuous, deeper pile.

Please refer to Specifications and Options pages 44-48 for standard and optional features. Not all options are available on all models and within all markets.





Bentayga Extended Wheelbase Azure.

Contemporary and elegant, the commanding Bentayga Extended Wheelbase Azure combines cutting-edge design with unrivalled wellbeing features and future-focused technology, allowing you to enjoy every moment you're on the road.

A unique 22" ten spoke wheel design is available in a choice of three finishes, alongside numerous alternative options. A bright chrome vertical-varied grille, meanwhile, comes together with bright lower bumper grilles and 'Azure' badging, to hint that something special awaits inside.

Behind the power close rear doors, the interior is defined throughout by the Harmony Diamond Quilt. In the rear, flexible seating configurations comfortably accommodate up to three people with enhanced, class-leading headroom and legroom for all.

Other features that come with the welcoming Bentayga Extended Wheelbase Azure, adding to its wellbeing credentials, include a heated duo-tone steering wheel, mood lighting and illuminated treadplates.

The Touring Specification ensures that every Azure model is equipped with a suite of driver assistance features that maximise comfort on every journey, and in every driving situation. They include Night Vision, Head-Up Display and Adaptive Cruise Control with Lane Guidance. New graphics in the driver's information panel, meanwhile, reflect the refined character of the car.

Available with an exclusive interior colour combination and a limitless array of personalisation options, the elegant Bentayga Extended Wheelbase Azure can be inviting for everyone – yet uniquely yours.

Bentayga Extended Wheelbase Mulliner.

For the ultimate travelling experience, look no further than the exquisitely crafted Bentayga Extended Wheelbase Mulliner. Like any vehicle bearing the Mulliner name, it represents a truly unrivalled level of automotive craftsmanship and is the most luxurious model in the range.

It is instantly recognisable, thanks to the chrome details of its diamond-in-diamond Mulliner front grille, Mulliner wing vent and satin silver door mirror caps. Exclusive to the Mulliner model, its 22" wheels are available in three unique finishes, all featuring self-levelling wheel-centre badges.

On opening the doors, the ground is illuminated by the LED Welcome Lamps in the underside of each door. Illuminated 3D treadplates guide you onward as you step inside.

The three-colour Mulliner interior is available in eight different colourways, with the option to choose your own bespoke Mulliner colourway. Mulliner Harmony Diamond Quilt is featured on the doors and seats, while 'Mulliner' emblems are embroidered on each seat.

The centre console has a unique 3D aluminium finish to contrast with the Grand Black veneer on the fascia, while the clock and the graphics in the driver's information panel are exclusive to Mulliner. As a finishing touch, the keys are delivered in a Mulliner presentation box.

Please refer to Specifications and Options pages 44-48 for standard and optional features. Not all options are available on all models and within all markets.





DESIGN



Awe-inspiring outside.

8

Long, flowing lines run from front to rear of the beautifully proportioned, sculpted Bentayga Extended Wheelbase – immediately suggesting that this is no ordinary SUV.

Distinctive polished chrome front grilles, flanked by elliptical front lamps bearing Bentley's signature 'crystal cut' design, create a powerful expression when face to face with this extraordinary vehicle. Enhancing the longer profile is the roof spoiler and 'power line' running the length of the car, above which the chrome fender vent is positioned. The impressive, longer rear doors give an indication of the space to be found inside.

Contrast silver bumper valances, front and rear, set against your choice of paint colour, enhance the SUV's commanding presence on the road. A range of 21" and 22" wheels are available in a variety of stunning finishes, with the Azure and Mulliner models having their own exclusive designs.

Elliptical tail lamps that reflect those found at the front, and a prominent 'Bentley' badge are set into the elegantly sculpted tailgate which reaches beyond the boundaries of seamless contouring. Oval shaped split tailpipes complete the stunning vision.

From first glance to close inspection, the result is a striking, distinctive and confident identity.

Please refer to Specifications and Options pages 44-48 for standard and optional features. Not all options are available on all models and within all markets.

Inspired inside.

The vast interior of the breathtaking Bentayga Extended Wheelbase exudes luxury in every way, with each handcrafted detail considered carefully and individually.

The distinctive Bentley wings marque inspires the architecture of the cockpit, forming the symmetrical, double-wing arrangement that extends from door to door. The long front console reaches into the rear cabin, with a meticulous design that puts the Touch Screen Remote, USB-C ports and wireless charging within reach of the rear passengers.

The new, dedicated Extended Wheelbase interior colour combination flows through the expansive cabin space for a distinctive and alluring look and feel. The perfect balance of colour, in natural hides, complements the broad expanse of veneer found on the longer rear doors. The option of a Metal Overlay in the veneer of the fascia panel and doors gives an added layer of refinement. Every detail has been considered, right down to the wool overmats included with the Azure and Mulliner models.

Natural light cascades in through the large, perfectly positioned sunroof. For a more controlled environment, mood lighting can be switched on providing a unique atmosphere – for work or relaxation. The choice to create a calm ambience is at your fingertips with subtle waterfall lighting, while the Bentley Diamond Illumination can be added for breathtaking effect.

The Bentayga Extended Wheelbase Azure features Harmony Diamond Quilt, with the 'Azure' emblem visible on the treadplates, the fascia and seat embroidery. The Mulliner model, meanwhile, takes SUV luxury to unprecedented heights. A dazzling array of handcrafted features represent a true showcase of Mulliner craftsmanship, from the gleaming metal veneer inlays to the diamond-milled aluminium console and Mulliner Harmony Diamond Quilt.

Every inch of this interior is a delight to behold.

Please refer to Specifications and Options pages 44-48 for standard and optional features. Not all options are available on all models and within all markets.



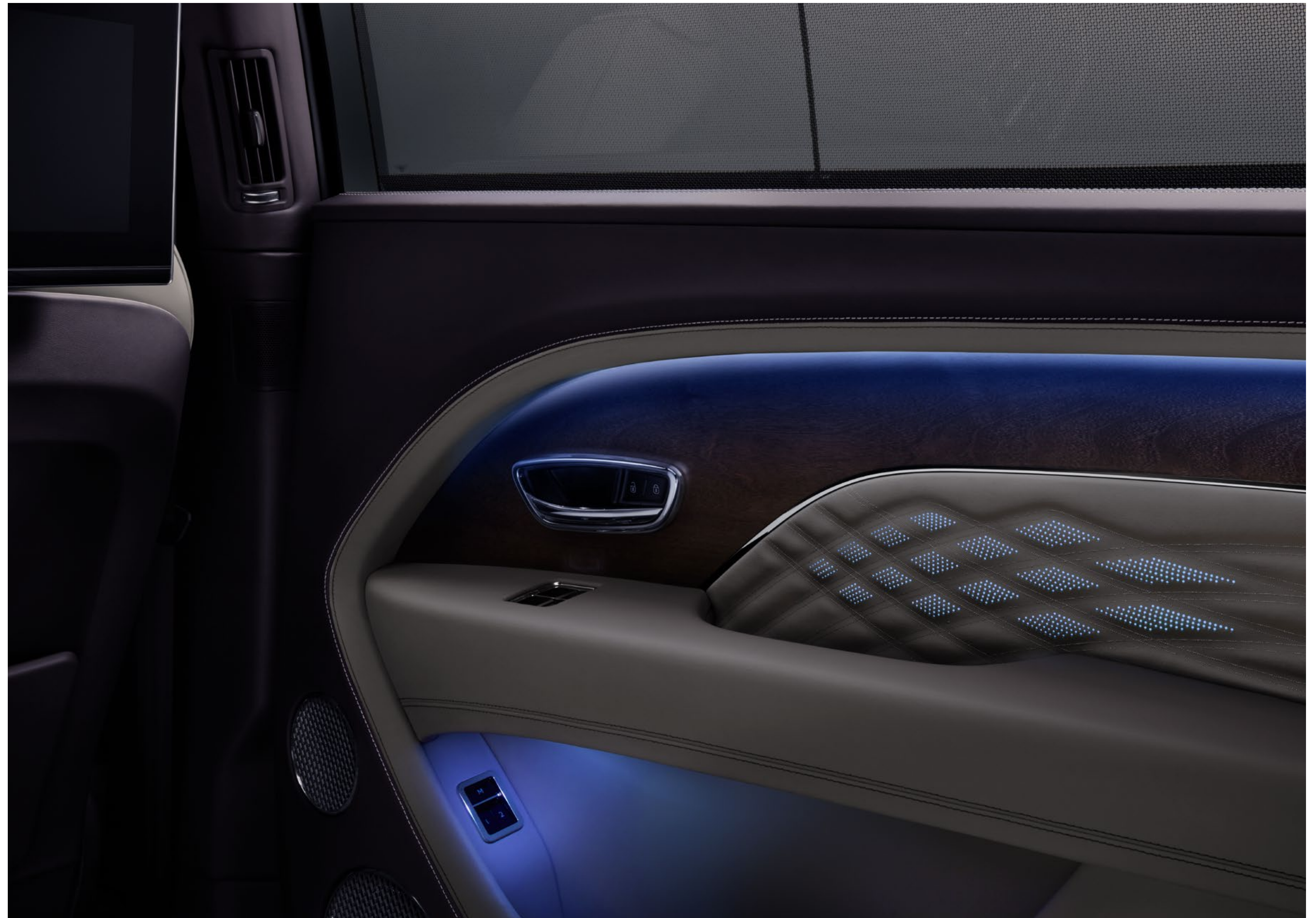
Light your way.

A subtle, yet stunning, addition to the Bentayga Extended Wheelbase is the Bentley Diamond Illumination. Controlled from the main infotainment panel or the Touch Screen Remote, the effect can be synchronised with mood lighting, or adjusted separately. Changes in the intensity of the light can transform the cabin with remarkable style. A selection of 30 colours dazzle to suit your taste.

This striking and elegant feature, integrated to the front and rear doors beneath hides that are soft to the touch, is unique to this advanced SUV. The mood-enhancing illumination is achieved using LEDs, 12 on each of the front doors and 22 on each rear door, that shine through small perforations in the leather trim of the door panels to dramatic effect.

Such detailed decoration may initially appear understated but, once switched on, has a breathtaking impact, especially when travelling at night.

Please refer to Specifications and Options pages 44-48 for standard and optional features. Not all options are available on all models and within all markets.





ENHANCED EXPERIENCE



Uncompromising in every sense.

There's no need to compromise on performance, capability or comfort when you choose the luxurious Bentayga Extended Wheelbase. This commanding car has elevated the SUV to dramatic new levels, combining contemporary design with timeless craftsmanship to deliver an unmistakable aesthetic. Alongside phenomenal power and innovative technology, practicality goes hand in hand with comfort.

Whether you are golfing or skiing, heading across continents or across town, navigating roads or leaving them far behind, the adaptable Bentayga Extended Wheelbase is perfectly equipped for every journey.

A place to relax.

Regardless of where you are, you can rely on the elegant cabin interior to provide you with the comfort you desire, with every element displaying Bentley's famed craftsmanship. The veneers are carefully selected and meticulously mirror-matched to create a seamless flow of wood around the car's occupants.

The refinement continues in the seats, where ergonomically designed cushions and backrests ensure complete comfort. Even more advanced wellbeing options are available as part of the Bentley Airline Seat Specification.

The Touch Screen Remote system is conveniently located in the rear of the central console, allowing rear passengers to control features such as rear seat massage, heating and ventilation, climate control and sound.

Air quality is optimised thanks to air ionisers in both the front and the rear of the cabin. A new particle matter sensor measures the build-up of harmful airborne particles outside the vehicle, displaying the

results in real time on the driver's information panel. If the air quality outside the vehicle is worse than it is inside the cabin – as it may be in a traffic jam, for example – the climate system automatically switches to re-circulation mode. It can even detect tunnels as you approach using the car's GPS system, switching to re-circulation mode just before you enter and switching back again as soon as you are out of the tunnel and the air quality outside has improved.

To meet your needs for technology and entertainment, wireless phone charging is integrated in the stowage area forward of the gear lever and to the rear of the front console for passengers to charge their devices on the go. Four USB-C ports, two in the front and two in the rear, provide additional connectivity. For audiophiles, there are two optional upgrades to the standard sound system: Bang and Olufsen for Bentley, and the Naim for Bentley premium audio system, for the ultimate in music quality. The Bentley Rear Entertainment System, meanwhile, offers access to a world of TV and film for passengers.

Please refer to Specifications and Options pages 44-48 for standard and optional features. Not all options are available on all models and within all markets.





ENHANCED EXPERIENCE



Refined and practical.

When it comes to the realities of modern luxury living, the versatile Bentayga Extended Wheelbase is a car for all seasons and all lifestyles. Innovative features have been designed to enable a whole spectrum of outdoor pursuits, across a vast range of climates and temperatures – from sea level on the Cote d’Azur to the snowline in the Sierra Nevada – so that your destination can be as exhilarating as the journey.

The robust Bentayga Extended Wheelbase delivers a towing capacity of 3.5 tonnes – more than ample for speedboats, gliders and horseboxes. The electrically retracting tow bar lies behind the rear bumper when not in use.

All features and accessories, from an aerodynamic roof box to a range of tailored storage solutions for skiing, fishing, diving and other active pursuits, offer luxury alongside practicality, whilst maintaining the Bentayga Extended Wheelbase aesthetic. The spacious boot provides substantial storage space, while the hands-free tailgate, easy-load boot function and load assist tray enable effortless opening, closing and loading.

Please refer to Specifications and Options pages 44-48 for standard and optional features. Not all options are available on all models and within all markets.



A driver's dream.

The Bentayga Extended Wheelbase represents another leap forward for SUV interiors – a further evolution of luxury, usability and the latest technology.

Within the precisely considered, handcrafted cabin, both driver and front passenger can enjoy the ultimate in comfort. Every feature has been designed to offer the most satisfying journey. With adjustable cushions and backrests, ventilation, plus six massage settings, the seats of the intuitive Bentayga Extended Wheelbase adapt to you.

Behind the ergonomic, hide-trimmed steering wheel, you'll find the fully digital driver's information panel where you can choose the view that suits your driving style – the traditional two dial design, or an expanded option providing clear visuals of maps and media. An intuitive, high resolution, 10.9" touch screen spans the full width of the centre fascia giving the driver, or front passenger, control of the climate, lighting, infotainment and more.

Passenger perfection.

When seeking the extraordinary, look no further. Behind the extended rear doors, the ultimate passenger experience awaits. As the doors power close behind you, it's time to decide what you want from your journey. Whether you're turning your attention to the in-car entertainment, focusing on work, or watching the extraordinary world go by – you can do it all with unrivalled ease.

The generous dimensions of the spacious Bentayga Extended Wheelbase offer extraordinary rear cabin space for optimal legroom and comfort, with flexible seating arrangements to accommodate two or three in the rear cabin. The 4+1 Comfort Specification provides outstanding comfort and an exceptionally high level of functionality. The two outer rear seats have 16 different adjustment options, ensuring that passengers can find a perfect seating position. A generous third seat between the outer seats easily accommodates a third adult.

As with the front seats, ventilation, heating and massage take comfortable support to a place of sublime relaxation. It's hard to imagine that such luxury could be extended even further, yet the Bentley Airline Seat Specification invites passengers to recline and stretch their legs.

Whether working or relaxing, your wellbeing will always be optimised.

Please refer to Specifications and Options pages 44-48 for standard and optional features. Not all options are available on all models and within all markets.





First class travel.

Sublime comfort. Unrivalled relaxation. Mood-lifting enhancements: The Bentley Airline Seat Specification makes the passenger experience more akin to that of being flown on a private jet.

Both rear seats recline smoothly, with adjustable bolsters and electric headrests for optimum comfort – while two innovative features, Postural Adjust and Seat Auto Climate, invite passengers to reach new levels of relaxation.

On top of the six massage settings, the groundbreaking Postural Adjust feature keeps the blood flowing and energy levels up on the longest of journeys. Large air bladders move steadily around six pressure points at the shoulders, thighs and lumbar positions. Virtually imperceptible at the lowest of three intensity settings, they prevent extremities from falling asleep and fatigue from building up – no matter how long the journey.

Bentley's exceptional innovation takes intuitive comfort beyond expectation with Seat Auto Climate – a world first in keeping temperature and humidity

regulated, and passengers at ease. Passengers select their optimal climate settings using the Touch Screen Remote. These can be set for the cushions and backrest independently and linked to armrest heating. Sensors recognise body heat and humidity, adjusting heating and ventilation automatically to maintain the desired temperature. Fans pull air in, rather than blow, for a gentler approach to cooling.

Hide-trimmed picnic tables fold down from the seat backs so you can enjoy a relaxing lunch, or set up a laptop, safely, in motion. With the freedom to move effortlessly, the infotainment Touch Screen Remote is within easy reach. Adjust the music from the Naim for Bentley sound system, climate and lighting to create the perfect atmosphere.

Behind the front seat passenger, an electric footrest deploys to deliver a further level of support with 'Business' and 'Relax' switches automatically adjusting the seat from reclined to comfortably upright, and back again – completing the 'first class' experience.

Please refer to Specifications and Options pages 44-48 for standard and optional features. Not all options are available on all models and within all markets.



PERFORMANCE



The ultimate SUV.

The all-purpose Bentayga Extended Wheelbase delivers Bentley's unique and exhilarating driving experience through a balance of raw power and efficiency, making it supremely versatile on-road and off-road. As should be expected, it possesses the typical Bentley characteristics of phenomenal torque with ample reserves of power, ensuring a surge of acceleration is always available should it be needed.

The lively V8 engine provides exhilarating power and dynamic performance, with Bentley's DNA at its heart.

Please refer to Specifications and Options pages 44-48 for standard and optional features. Not all options are available on all models and within all markets.



Perfectly controlled, everywhere.

20

The effortless driving experience offered by the exhilarating Bentayga Extended Wheelbase is enhanced by exceptional ride comfort and phenomenal handling, both on and off the road.

Its imposing, yet elegant, demeanour suggests it's ready for anything. Bentley Dynamic Ride and the advanced Torsen All-Wheel Drive (AWD) system, prove it. The AWD system delivers power to all four wheels and unwavering confidence to the driver, regardless of terrain or speed. Meanwhile, Bentley Dynamic Ride unites the presence of the SUV with the performance of a sports car and the refinement of a luxury saloon.

Additionally, All-Wheel Steering delivers low speed manoeuvrability, giving the impression of handling a far smaller vehicle, and high speed stability creating a smooth sensation on more dynamic journeys.

To make your drive even more satisfying, the 8-speed transmission ensures optimum gear selection and smooth, irresistible acceleration through multiple gear changes. Engineered to perform perfectly at lateral and longitudinal angles of up to 35°, and in a wading depth of up to 500 mm, this incredible SUV is always waiting for a challenge.

Fast and functional.

Powered by an advanced V8 engine, the formidable Bentayga Extended Wheelbase is forceful and efficient. It offers incredible performance and a dynamic driving experience, accompanied by a distinctive sound that announces the car's immense capabilities.

This advanced engine can produce a thrilling surge of power, with 542 bhp (550 PS) at your disposal. It reaches its maximum torque of 770 Nm (568 lb ft) at just under 2,000 rpm and maintains this through to 4,500 rpm. This ensures rapid acceleration whatever your driving speed – taking you from 0 to 60 mph in 4.5 seconds (0 to 100 km/h in 4.6 seconds) and on to a staggering top speed of 180 mph (290 km/h).

The V8 engine isn't just relentless, it's also highly efficient. It employs a Variable Displacement System to shut down four of the eight cylinders when not required, reactivating them again as soon as they are needed without the driver even noticing. 'Start-stop' technology is deployed not only when the vehicle is stationary, but also at 'near-stop' speeds. In short, the V8 engine delivers exhilaration as well as efficiency to create an extraordinary driving experience.





TECHNOLOGY



Intuitive technology.

Bentley has long set the standard in luxury, all-wheel drive engineering, integrating the latest technologies in discreet and unobtrusive ways.

Born of 'intelligent functionality', they are designed to enhance the enjoyment of driving. Created with the driver in mind, the technology in the advanced Bentayga Extended Wheelbase can be easily configured to suit your personal tastes, including several driver assistance systems to aid urban driving, grand touring and more robust off-roading.

This innovative SUV comes equipped with the latest suite of Connected Car services, accessible in-car and remotely via the My Bentley app, allowing you to monitor the location and status of your car, and control a host of functions wherever you may be. These services are designed to enhance your journey, making it safer, smarter and more convenient – even when you're apart from your vehicle.

However, the connectivity doesn't end with you and your car. Infrastructure data such as real-time traffic information, green light prediction and swarm services from other road users are harnessed to warn of potential hazards on your chosen route. These Connected Car services mean the progress of your journey can remain uninterrupted so, whatever adventures you embark on, each can be relished to the full.

Please refer to Specifications and Options pages 44-48 for standard and optional features. Not all options are available on all models and within all markets.

From city roads to no roads.

Remarkable performance allied with exceptional handling and peerless ride comfort lets you experience every environment in world-class refinement. The Drive Dynamics Control allows you to adapt to your surroundings using an intuitive rotary dial. Whether you're navigating the city or enjoying the open road, you can switch instantly between four on-road driving modes – Comfort, Sport, Custom and Bentley.

The All-Terrain Specification adds four additional Responsive Off-Road Settings, to deliver more drive modes than any other car. The 'Snow & Grass' setting provides grip on low friction surfaces, 'Dirt & Gravel' gives optimum traction on loose debris, 'Mud & Trail' configures the car's systems for muddy, uneven surfaces and 'Sand' gives greater confidence over dunes. And, all the while, exhaustively tested underfloor protection ensures all key components are preserved.

Please refer to Specifications and Options pages 44-48 for standard and optional features. Not all options are available on all models and within all markets.



An unrivalled driving experience.

The Bentayga Extended Wheelbase is equipped with a suite of driver assistance systems designed to make driving easier and safer than ever – whether on city streets or the open road.

When parking and manoeuvring at low speeds, for example, 3D Surround View provides a complete picture of your surroundings, so you can get a clear view from any angle, even in low light. Turn Assist Rear alerts you to the presence of traffic such as cyclists coming up from behind you, while Trailer Assist, can take over the steering of your vehicle when you are reversing with a trailer in tow. When driving at speeds of over 40 mph, Emergency Assist can issue alerts and ultimately bring the car safely to a stop, if you appear to have fallen asleep.

Make light work of driving in town

New safety features include Manoeuvre Assist, which builds a live picture of your environment when you are driving at low speeds, so it can alert you or intervene if necessary to prevent a collision. Intelligent Park Assist*, meanwhile, sees your Bentayga take complete control during parking manoeuvres. That means sizing up a potential space, handling the steering, braking,

acceleration and gear changes throughout, and even doing the same to exit the space. If it is so tight that you won't even be able to open the doors, you can use the Remote Park Assist* feature in the My Bentley smartphone app to park or leave the space while you stand and watch.

Embrace the open road

The optional Touring Specification makes driving beyond the city limits easier and more comfortable than ever, with features including Night Vision and a Head-Up Display. Adaptive Cruise Control with Lane Guidance lets you take your feet off the pedals on the highway. It controls your speed, maintaining a safe distance from the vehicle in front and can even slow to a stop in heavy traffic, before accelerating again as required. It can alert you if you drift from the centre of your lane and it can even steer you back if you don't respond. New Predictive Adaptive Cruise Control, meanwhile, uses live map data and Traffic Sign Recognition to adjust your speed in anticipation of turnings, junctions or roundabouts, allowing you to rest your feet for much of your journey, even when you leave the highway.

*The driver must constantly supervise the manoeuvre and be able to intervene at any time to maintain safety.
Please refer to Specifications and Options pages 44-48 for standard and optional features. Not all options are available on all models and within all markets.





Connect to more.

Every Bentayga Extended Wheelbase is equipped with a wide range of Connected Car services*, accessed in-car or remotely via the My Bentley app.

Seamless integration

Content on your phone can be accessed in your car wirelessly, through Android™ Auto or Apple CarPlay. Phone content is shown on the section of the screen furthest from the driver, so no driving information is obscured. Online natural speech interaction, meanwhile, lets you activate over 200 car functions by voice, so your hands needn't leave the wheel. You can input a destination into the navigation system via the My Bentley smartphone app when you're away from your car, so you're ready to go the moment you get behind the wheel. Real-time traffic information can then dynamically re-route your journey if there is congestion, while Green Traffic Light Prediction will aid smooth passage through junctions. Internet connectivity is available for all occupants throughout, thanks to a built-in Wi-Fi hotspot.**

A personal experience

In the majority of markets*, your vehicle is connected to the cloud, enabling all your personal settings to be stored remotely and accessed by the car as required. This means that even if you move between compatible Bentleys or to a new one, all navigation system destinations, light settings, seat settings and even your favourite radio stations can be downloaded immediately, making them available from the moment you get in.

A warm welcome

You can use the My Bentley app to remotely check the status of your locks, lights, mileage and fuel. If you have a hybrid model, you can also check your EV range. Hybrid models also allow you to remotely pre-heat or pre-cool the cabin with My Cabin Comfort. Just select your desired temperature and let the car's climate control system do the rest. You can also opt to heat individual seats, armrests and the steering wheel. You can even defrost the windows remotely, before your journey begins.

Leading the charge

Other hybrid features include E-charging, which allows you to plug your car into a charger and activate the charging process remotely via the app. Just enter the time you plan to set off, and the charging system calculates a charge rate that will give you the highest possible level of charge, just in time for your departure.

You're in safe hands

Emergency features include Private eCall and Roadside Assistance, which automatically connect you to a Bentley Emergency Call Centre or the Bentley Roadside Assistance team in the event of an accident. Furthermore, Theft Alert will notify you if the alarm is activated, giving you complete peace of mind.

Please refer to Specifications and Options pages 44-48 for standard and optional features. Not all options are available on all models and within all markets.

*Vehicle connectivity and service availability varies by market. Please confirm specification with your local certified Bentley Retailer.

** With additional data plan purchased through a mobile network operator.

Android is a trademark of Google LLC.
Apple CarPlay is a registered trademark of Apple Inc.



Screen time, reimagined.

For stunning views, you do not have to look far. The advanced Bentayga Extended Wheelbase features a high-resolution touchscreen infotainment system. This 10.9" screen has a resolution of 1920 pixels by 720 pixels, providing sharp, crystal-clear images, and is underpinned by cutting-edge software to provide a high level of futureproofing.

Here, you can intuitively control your personal device or smartphone which connects to the screen via Android Auto, Wireless Android Auto, Apple CarPlay® or Wireless Apple CarPlay® for a seamless experience.

The digital driver's information panel, located behind the steering wheel, offers a choice of graphical styles – including one that is exclusive to the Mulliner model. You can also choose between two main views: Classic, which shows the traditional two dial design, or Expanded, where only the left dial is in view, providing an expanded area for maps and media depending on your personal preferences.

For passengers' pleasure the Bentley Rear Entertainment System offers an exceptional immersive experience. Two high-definition, 10.1" screens are mounted on the back of the front seats. Easy access to Netflix means practically endless TV and movie entertainment, while device mirroring allows passengers to cast directly from their phone to the high-definition screen. Sound streams seamlessly via Bluetooth to personal headphones, the headphones provided or through your choice of three incredible sound systems, for a cinematic adventure on the road.

Please refer to Specifications and Options pages 44-48 for standard and optional features. Not all options are available on all models and within all markets.



PERSONALISATION



Express your desire.

With a host of accessories and styling options allowing you to configure your Bentayga Extended Wheelbase to your personal taste, it is highly unlikely you will ever see another one like yours. You can choose from an extensive palette of exterior paint colours, all of which are designed to maintain their brilliance for many years to come. With a range of different wheel designs, hide options, beautiful natural veneers and distinctive trim options, almost every visible feature of your car can be customised to your own specification.

To make the remarkable Bentayga Extended Wheelbase truly yours, you have the choice of three optional stitching configurations – contrast stitching, contrast stitching with seat piping or hand cross stitching by Mulliner. Or, to emphasise your SUV's performance credentials, you can opt for the dramatic Blackline Specification, which replaces the exterior brightware with a high-gloss black finish.

Please refer to Specifications and Options pages 44-48 for standard and optional features. Not all options are available on all models and within all markets.



Bespoke commissioning from the expertise of Bentley Mulliner.

In the early days of motoring, drivers bought a vehicle comprising just an engine, drivetrain, four wheels and a set of controls. The rest required a coachbuilder, such as Mulliner. Still, today, no-one is better placed to help make your car an expression of your unique style.

At Bentley, the Mulliner Personal Commissioning team provide bespoke customisation which is virtually limitless. For instance, the colour of any object in your possession can be matched to create your own personal paint colour. The same is true for your hides – any colour you can find, or dream, can be perfectly matched and made for you only.

The team in Crewe can also create personalised embroidery for your seats, handstitched from any design of your choosing. Not to mention exquisite marquetry inlays to your veneers, manifesting your unique vision through timeless artisan craft.

To explore the endless possibilities, simply visit the **website**, or ask your Retailer about the Personal Commissioning Guide.

Exterior finish.

Colour can be a powerful expression of who you are. That's why we offer a wide range of exterior colours carefully curated by the Bentley design team, each one chosen to emphasise the unique presence of your Bentayga Extended Wheelbase on the road.

You can choose from seven standard exterior colours on the Bentayga EWB and the Bentayga EWB A, or 16 on the Azure and Mulliner models. The extended range takes your choice to around 60 colours, including a new option: Topaz Blue, a striking metallic turquoise.

You can also explore the Bentley Mulliner range of exquisite paints, which include solid, metallic, satin and pearlescent options. And if you have an exact colour in mind – whether it's found on a favourite item of clothing, flower, or piece of art – Mulliner offers a bespoke colour matching service that can create a paint option which is entirely personalised to you. To discover more, visit **Mulliner**.

Please refer to Specifications and Options pages 44-48 for standard and optional paints. Not all options are available on all models and within all markets.





Intrepid wheels.

Your choice of wheel can subtly or dramatically alter the character of your vehicle. There is a wide range of 21" and 22" wheels available, alongside a new 22" wheel designed exclusively for the Mulliner model, which is available in three different finishes.

Other breathtaking finishes are available for different wheels. The painted finish is elegant and understated to give your vehicle a refined aesthetic. The black painted finish completes a commanding presence, and the black painted and bright machined finish gives an athletic edge to the car – suggesting it's not just spacious, but sporty too.

To explore the options for yourself, visit our **online configurator**.



21" 5 twin-spoke alloy wheel – grey painted and bright machined



21" 5 twin-spoke alloy wheel – painted



21" 5 twin-spoke alloy wheel – black painted and bright machined



22" 5 spoke directional alloy wheel – painted



22" 5 spoke directional alloy wheel – black painted



22" 5 spoke directional alloy wheel – polished



22" 10 spoke alloy wheel – painted



22" 10 spoke alloy wheel – black painted and bright machined



22" 10 spoke alloy wheel – polished



21" multi-spoke alloy wheel – silver painted



21" multi-spoke alloy wheel – black painted and bright machined



21" multi-spoke alloy wheel – polished



22" Mulliner alloy wheel – grey painted and polished



22" Mulliner alloy wheel – black painted



22" Mulliner alloy wheel – polished

Compelling veneers.

Our obsession for fine materials and handcrafted finishes can be clearly seen in the flawless veneers of the Bentayga Extended Wheelbase. And there's a vast range to choose from, including options that deliver an impeccable, contemporary look and feel. Such as the tactile open pore veneers that let you feel the natural grain of the wood through ultra-thin lacquer. Or the painted Piano Linen by Mulliner finish that complements every colour combination available.

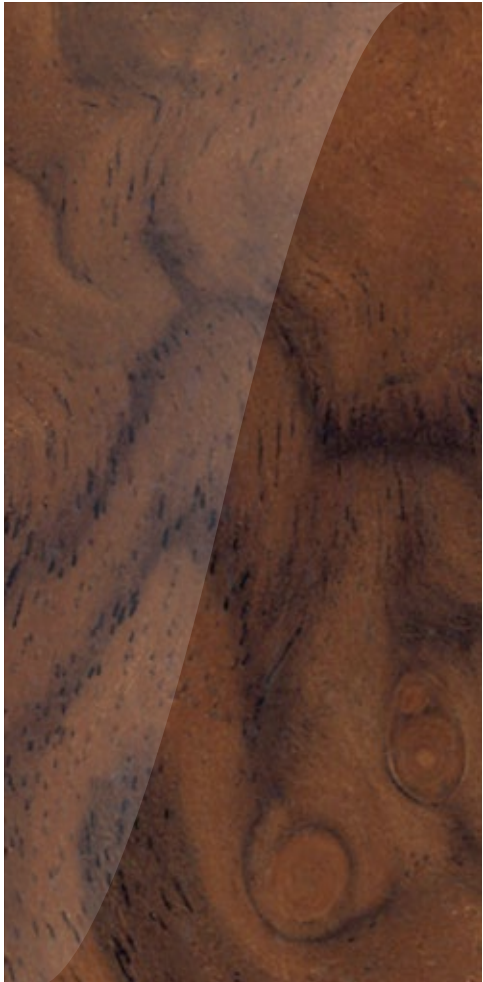
Sustainably sourced from forests around the world, each leaf of wood can be traced right back to the tree it came from; the beginning of an intricate process that takes around five weeks for every car. The resulting shine is both lavish and deep, beautifully highlighting the natural grain of the wood. There is also the option of a Metal Overlay in the veneers on the fascia panel and the doors.

If you'd prefer sportier surroundings, explore our latest eye-catching technical finishes. Options include high-gloss Carbon Fibre, Dark Tint Diamond Brushed Aluminium – where each diamond is brushed in three directions to give a textured finish – and the stunning Mulliner 3D Diamond Milled Aluminium finish for the centre console.

Please refer to Specifications and Options pages 44-48 for standard and optional features. Not all options are available on all models and within all markets.



Veneers



Burr Walnut
by Mulliner



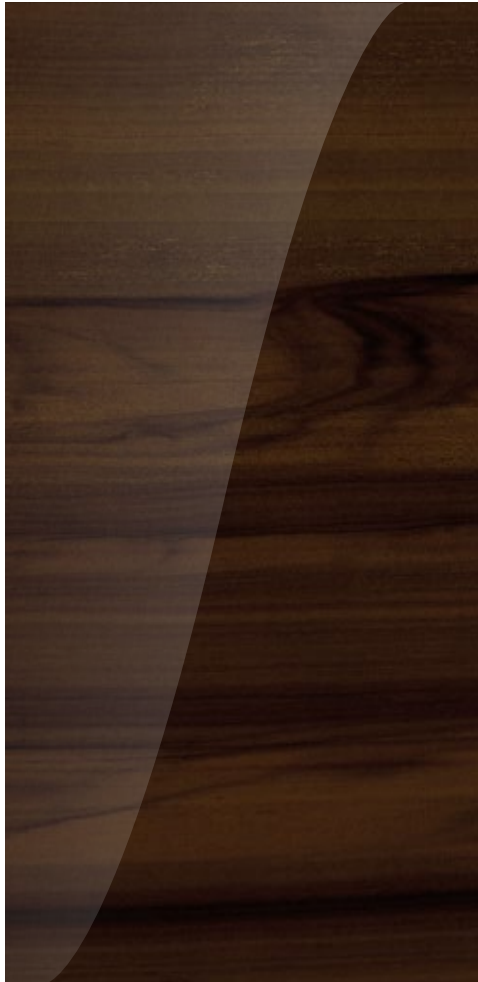
Crown Cut Walnut



Dark Fiddleback
Eucalyptus



Dark Burr Walnut



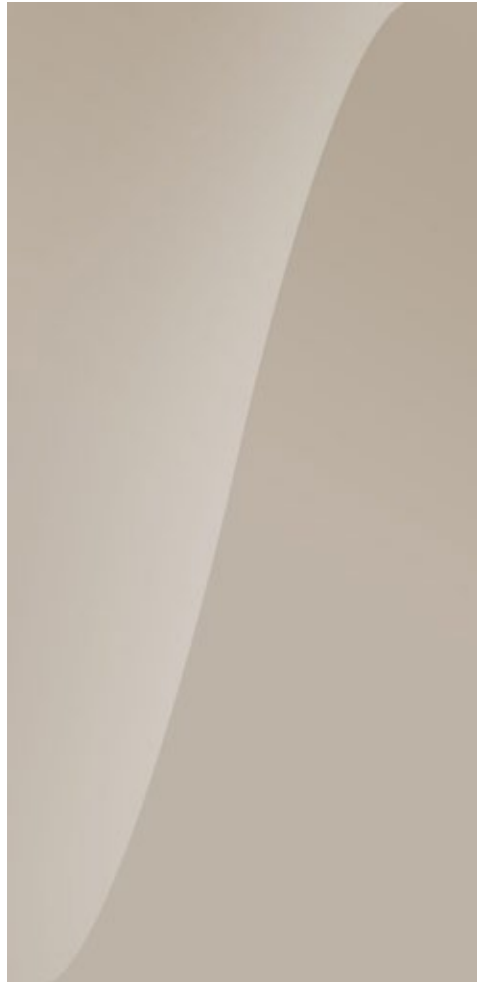
Liquid Amber



Piano Black



Tamo Ash
by Mulliner



Piano Linen
by Mulliner*



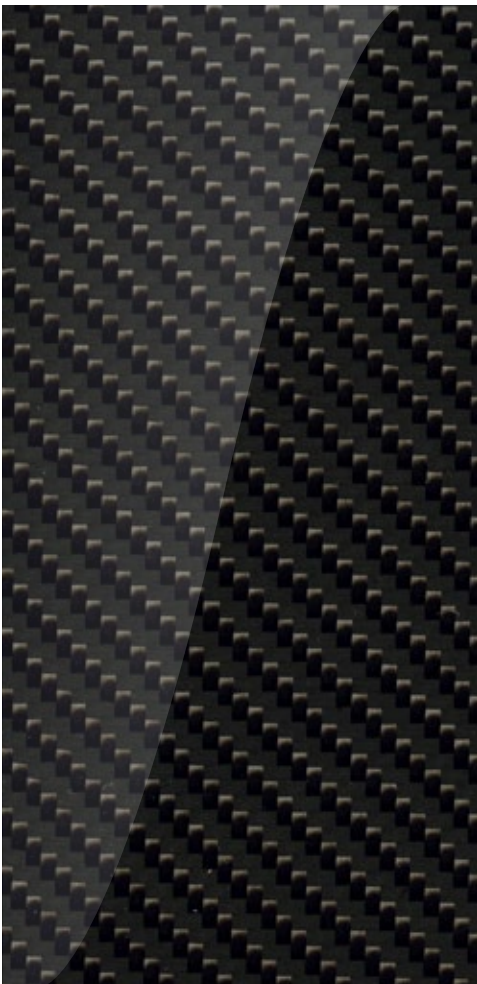
Open pore
Dark Burr Walnut



Open pore
Crown Cut Walnut



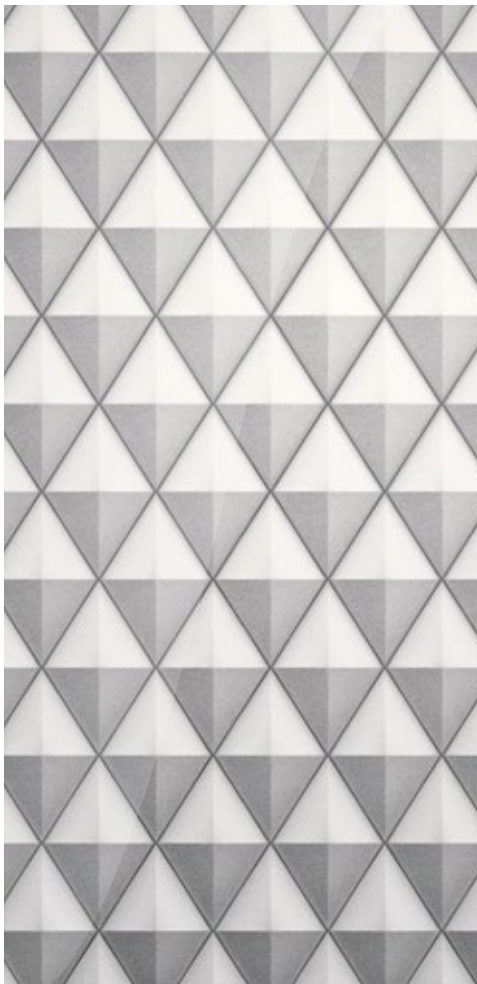
Open pore Koa



Carbon Fibre



Diamond Brushed
Aluminium – Dark
Tint**



Diamond Milled
Aluminium

Please refer to Specifications and Options pages 44-48 for standard and optional veneers.
*Applied to fascia and door waistrail. Choice of veneer to centre console and picnic tables (if selected).
**Applied to fascia and door waistrail. Piano Black to centre console and picnic tables (if selected).

Natural hides.

Every inch of your car's interior is upholstered by hand. Crafting the hand-selected leather hides is a time-honoured process involving skills that take years to learn.

From the fascia to the stitching, the cabin requires a specialised approach throughout. Sections of the hide with high natural elasticity are reserved for curved surfaces like the seats, rather than for piping or flatter areas such as door inserts. The steering wheel, meanwhile, is covered in a highly resistant leather to ensure the natural chemicals from the driver's skin are not absorbed, creating grip, comfort and longevity.

The Colour Specification included with all Bentayga Extended Wheelbase models extends your choice of hide colours from five to 15. The range has been carefully selected by the Bentley design team and is available in a choice of colour combinations. Each one lets you express your individual style while complementing the interior perfectly.

In the Mulliner model, all eight exclusive hide colourways feature Olive Tan leather, which uses an innovative, sustainable tanning technique using a by-product of the olive-pressing process.



Hides



Burnt Oak



Damson



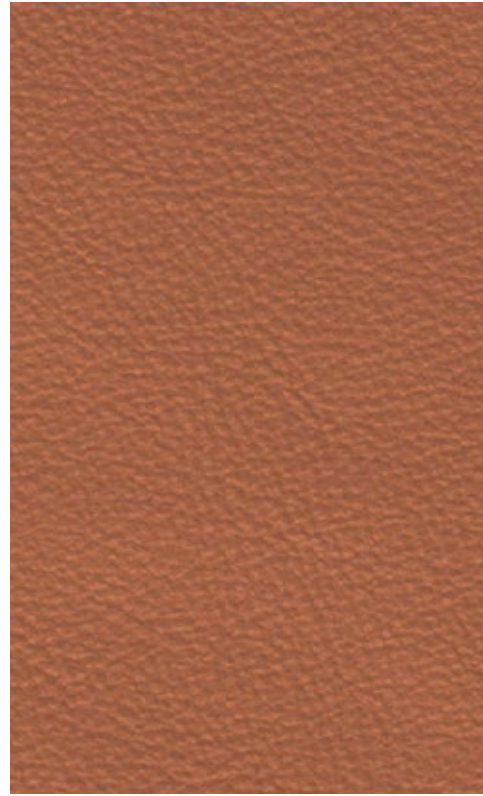
Cricket Ball



Hotspur



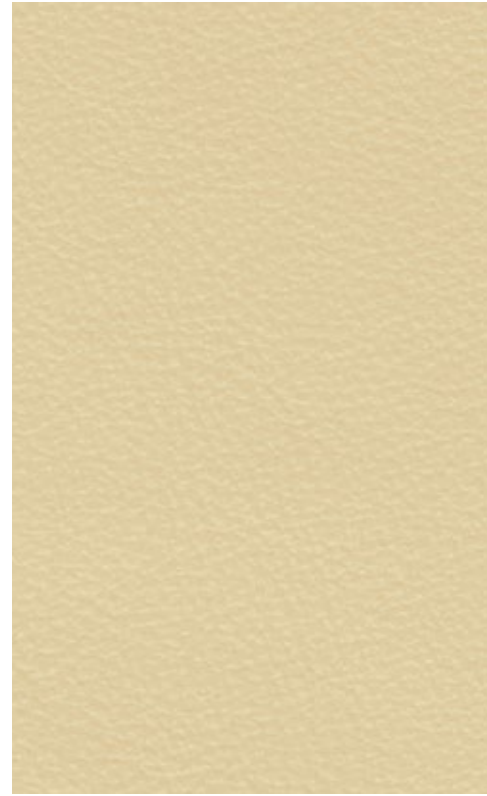
Saddle



Newmarket Tan



Camel



Magnolia



Linen



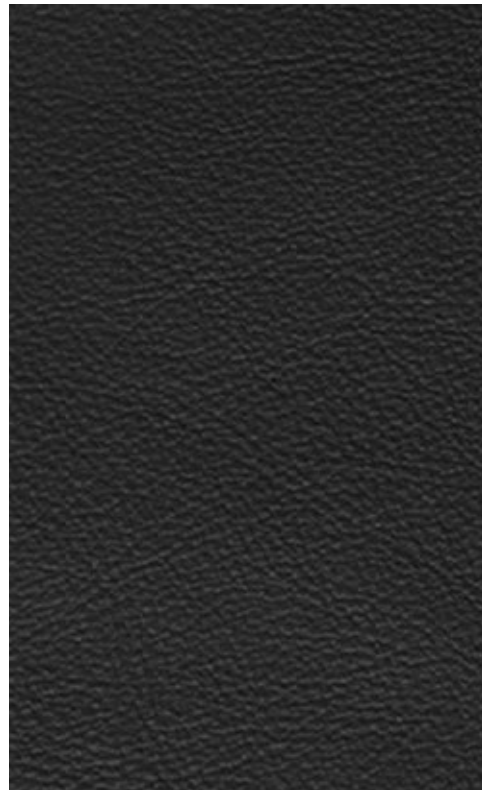
Portland



Porpoise



Brunel



Beluga



Cumbrian Green



Imperial Blue

Mulliner Colour Specification accent colours*



Pillar Box Red



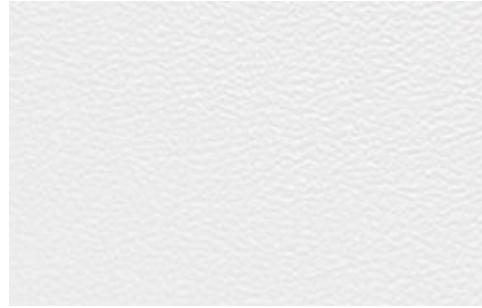
Mandarin



Magenta



Cherry Blossom



White



Cyber Yellow



Light Blue



Kingfisher

*Available only as part of the Mulliner Colour Specification and as accent colour only. Please refer to Specifications and Options pages 44-48 for standard and optional hides. Please note, the colours reproduced are for representation purposes only and therefore vary slightly from the actual vehicle.

Specification Packages.

To make it even easier to specify your Bentayga Extended Wheelbase our engineers and designers have created groups of features, from technology packages that make driving easier to collections of exquisitely crafted styling enhancements that suit your lifestyle.

FRONT SEAT COMFORT SPECIFICATION

- 20-way movement for front seats
- Ventilation and massage
- Comfort headrests

4+1 SEAT COMFORT SPECIFICATION

- Front Seat Comfort Specification
- Individual rear seats with 16-way movement
- Ventilation and massage
- Foldable centre armrest to create third seat
- Armrest includes storage, cupholders and x2 USB-C sockets
- Comfort headrests to rear outer seats
- Ski hatch

FIVE SEAT COMFORT SPECIFICATION

- Front Seat Comfort Specification
- Comfort headrests to rear outer seats
- Ventilation to outer seats

QUILTING SPECIFICATION

- Harmony Diamond Quilt to seats and doors

FOUR SEAT COMFORT SPECIFICATION

- Front Seat Comfort Specification
- Individual rear seats with 16-way movement
- Ventilation and massage
- Centre console with storage and USB-C charging
- Comfort headrests to rear outer seats
- Ski hatch

BENTLEY AIRLINE SEAT SPECIFICATION

(Available with both 4+1 and Four Seat Comfort Specifications)

- Wellness seating to both rear seats
 - Seat Auto Climate
 - Postural Adjust
- Electrically deployed, carpet and hide trimmed footrest from back of front passenger seat
- RELAX and BUSINESS switches in doors for reclined and upright positions
- Heated centre armrests (4+1 Comfort Specification only)
- Electric headrest to all four seats
- Rear seat pillow – trimmed in Dinamica (both rear seats)
- Rear seat massage upgrade (both rear seats)
- Additional ways of movement (both rear seats)
 - Rear cushion and backrest bolster adjustment
 - Rear cushion extension
- Picnic Tables

BENTLEY DIAMOND ILLUMINATION

- Illumination through perforation pattern in doors in up to 30 colours
- Mood lighting

STYLING SPECIFICATION

- ‘Speed’ style front and rear bumpers
- Carbon fibre blade on front bumper
- Carbon fibre side sills
- ‘Speed’ style carbon fibre tailgate spoiler

BLACKLINE SPECIFICATION

- All exterior brightware changes from bright to black, except BENTLEY lettering and wing badges

COLOUR SPECIFICATION

- Choice of all six interior colour combinations
- Extended choice of hide colours

LEATHER SPECIFICATION – UPPER CABIN

- Headlining and upper trim changes from Dinamica to leather

MULLINER COLOUR SPECIFICATION

- Eight new colours available for all stitching and piping options
- Eight new colours available for contrast steering wheel spokes and gear lever

TOURING SPECIFICATION

- Adaptive Cruise Control with Lane Guidance
- Predictive Adaptive Cruise Control
- Head-Up Display
- Night Vision

ALL TERRAIN SPECIFICATION

- Drive Dynamics Control
- Luggage management
- Underfloor protection

SMOKER'S SPECIFICATION

- Front and rear ashtrays
- Cigar lighters

The Bentley configurator.

To explore the full range of optional features and finishes available for the Bentayga EWB, offering up to 24 billion different combinations, please visit the Bentley **configurator**.

When it comes to visualising your dream vehicle, however, the configurator is just one perspective. You can also use the Bentayga EWB Augmented Reality app to take the car you configure for a simulated drive, in any location your phone or tablet can 'see'. You can even use it so see what it would look like on your driveway.

To download the app, just go to the Apple App Store or Google Play Store and search for 'Bentayga EWB AR'.

Financing your Bentayga Extended Wheelbase.

Our finance agreements are tailored to ensure you make the most of your investment.

While other financiers look only at the circumstances of the customer, Bentley Financial Services creates bespoke packages, based not just on your needs and income, but also on the vehicle you have in mind. To discover more, please talk to your local Bentley Retailer or visit **BentleyMotors.com**

Experience it for yourself.

As with every Bentley, there is only one way to truly appreciate this remarkable SUV – to sit in the driving seat, take the wheel in your hands and feel the breathtaking surge of acceleration as you put your foot down.

To take the next step on the journey of acquiring your Bentayga Extended Wheelbase, we recommend a conversation with a Bentley Retailer. You can find your nearest showroom **here**.





WORLD OF BENTLEY

naïf
FOR
BENTLEY



The Bentley Collection.

The Bentley Collection is a selection of lifestyle products inspired by the distinctive design of our cars. With many items lovingly crafted by highly skilled artisans, the Bentley Collection takes our exciting heritage and vision for the future, and seamlessly weaves it into extraordinary statement pieces.

From unique pieces for the home that elevate your everyday, to lovingly crafted clothing and accessories designed with a distinctive eye for detail, you can bring Bentley's unrivalled refinement to every aspect of your life.

To view the complete range, please contact your local Bentley Retailer or visit the online store at **[BentleyCollection.com](https://www.bentleycollection.com)**

The Bentley Experience.

These unique tours offer unrivalled opportunities to explore behind the scenes at the Home of Bentley in Crewe and visit the flagship showroom, CW1 House.

Available as an onsite, real-world experience or virtual tour, our experienced, knowledgeable hosts will share rare insights into the design and engineering process. You will meet the craftspeople who build your car and witness the skill and detail that goes into creating a personalised Bentley. You'll also discover the innovations and techniques they're using to craft a sustainable vision of the future.

The Bentley Experience offers a truly tailored journey, with exclusive access to the historic factory, and your questions answered as you go – by experts who share your passion for Bentley. You can even collaborate with them to commission your own highly personalised car.

Extraordinary Journeys.

We run a number of events each year for Bentley drivers and admirers, such as Extraordinary Journeys. These occasions offer the experience of seeing Bentley craftsmanship up close, while also offering a great deal more in the way of discovery. Participants experience aspects of Bentley beyond the car – a love of beautiful locations, a focus on wellbeing, an exploration of sustainability, and the chance to meet inspiring people who are reshaping the world.

In the UK, for example, Bentley enthusiasts have the opportunity to tour the Home of Bentley in Crewe before setting off on a journey that includes sustainable fine dining, some of the country's most notable landscapes and landmarks, and hospitality at a range of forward-thinking establishments.

To discover more, please talk to your local Bentley Retailer or visit **BentleyMotors.com**





SPECIFICATIONS & OPTIONS

Bentayga Extended Wheelbase

STANDARD SPECIFICATION

POWERTRAIN AND VEHICLE DYNAMICS

- 8-speed automatic transmission
- Bentley Dynamic Ride
- Electronic All-Wheel Steering
- Speed sensitive, variable ratio, electric power steering
- Air Suspension with Continuous Damping Control
- Electronic Stability Programme (ESP) with Traction Control (TCS), Anti-lock Braking System (ABS), Electronic Brake Force Distribution (EBD), Hydraulic Brake Assist (HBA), Drag Torque Control (MSR), Electronic Diff Lock (EDL)
- ESP off-road features: Roll-Over Mitigation (ROM), Hill Descent Control (HDC), Trailer Sway Mitigation (TSM)/ESC off-road mode
- Front and rear vented disc brakes with Bentley branded black brake callipers (front)
- Permanent all-wheel drive, with centre Torsen differential
- Drive Dynamics Control

EXTERIOR

- Choice of seven standard paint colours: Beluga (solid), Dark Sapphire, Glacier White (solid), Moonbeam, Onyx, St. James' Red (solid) and Thunder
- 21" 5 twin-spoke alloy wheel – painted
- 21" summer tyres
- Black radiator matrix grille with bright surround
- Matt Black matrix lower bumper grille
- Contrast silver front and rear bumper apron
- Bentley treadplates
- Acoustic side glass
- Acoustic heat insulating front screen
- Panoramic glass roof
- Aluminium side window brightware
- Fixed rear spoiler
- Heated rear screen

- Front and rear fog lamps
- Full LED supplementary lamps and tail lamps
- Full matrix LED headlamps with High Beam Assist*
- High Beam Assist*
- Standard oil and fuel filler caps
- Powerfold, heated, dimming, memory mirrors
- Roof rails
- Welcome orchestration lighting*
- Bentley 'B' wing vent
- Black B badge to wheel centres
- Black bonnet and boot Bentley Wing badges
- Oval split tailpipe
- Black painted shark fin aerial
- Wet arm front screen wipers
- Luggage rails
- Power latching to driver and passenger doors
- Powered tailgate
- Hands free tailgate

INTERIOR

- Choice of 15 hide colours: Burnt Oak, Damson, Cricket Ball, Hotspur, Saddle, Newmarket Tan, Camel, Magnolia, Linen, Portland, Porpoise, Brunel, Beluga, Cumbrian Green and Imperial Blue
- Rear waterfall lighting
- Six colour combinations, including unique Extended Wheelbase colour combination
- Leather upper trim (as part of the Leather Specification – Upper Cabin)
- Crown Cut Walnut veneer
- Two metal bulls-eye vents with organ stops and redesigned centre vents
- Black (Beluga) boot carpet
- Bentley branded clock
- Folding luggage compartment cover
- Front and rear cupholders

- Lockable, cooled glovebox
- Twin front armrest
- Electronically operated blinds for rear side windows
- Double sun visor
- Rear dual window switches
- Load through facility (NCO)
- Stowage: Instrument panel, doors (front and rear), armrests and front and rear console
- Leather trimmed gear lever
- Heated, single tone, 3 spoke, hide trimmed steering wheel
- Steering wheel mounted gear shift paddles
- Keybox

TECHNOLOGY AND DRIVER ASSIST

- Intelligent Park Assist*
- 3D Surround View
- Rear Crossing Traffic Assist
- Manoeuvre Assist
- Traffic Sign Recognition*
- Lane Departure Warning
- Exit Warning
- Blind spot assist
- Front and rear park distance control
- Turn Assist front and rear*
- Adaptive Cruise Control*
- Bentley Safeguard Plus*
- Evasive Steering Assist*
- Emergency Assist*
- Driver Assist Profile Switch
- Predictive efficiency assist
- Hill descent function
- My Bentley Connected Car services
- My Bentley Remote Park Assist
- Rain sensing wipers
- Touch Screen Remote
- Tyre Pressure Monitoring System (TPMS)

- Wireless phone charger (front and rear)
- Electric tilt and reach adjustment steering column with memory and easy entry function
- Electronic parking brake
- 12V power sockets (x2 cabin, x1 boot)
- 4 zone HVAC including Particle Matter Sensor and PM2.5 screen
- Front and rear air ionisers
- Alarm and immobiliser
- Auto-dimming rear view mirror
- Central locking system

AUDIO AND COMMUNICATION

- 10.9" touchscreen infotainment system
- Bentley signature audio
- DAB radio*
- Voice control and text-to-speech functionality*
- Wi-Fi connectivity / audio streaming
- Bluetooth telephone preparation*
- Four USB-C sockets – x2 front cabin, x2 rear cabin

CONNECTED CAR**

- Activate heating
- Activate lights and horn
- Android Auto
- Apple CarPlay®
- Calendar
- Curfew alert
- ERA Glonass (Russian e-Call)
- Find my car
- Local hazard information
- Lock my car
- Map update
- My car status
- Natural speech interaction

NCO = No Cost Option. *Regional applicability.
**Connected Car services vary by market, please see the My Bentley support site for regional details. Please see your Bentley Retailer for the latest information.

SPECIFICATIONS & OPTIONS

Bentayga Extended Wheelbase (cont.)

- News
- Online radio
- Online search
- Perimeter alert
- Personal navigation assistant
- Point of interest search
- Privacy mode
- Private e-Call
- Real-time traffic information
- Roadside assistance call
- Satellite Maps
- Song recognition
- Speed alert
- Stolen vehicle finder
- Theft alert
- Traffic sign recognition
- Valet alert
- Weather
- Wireless Android Auto
- Wireless Apple CarPlay®
- Wi-Fi hotspot†

SPECIFICATION PACKAGES

- Front Seat Comfort Specification
- 4+1 Seat Comfort Specification
- Colour Specification
- Leather Specification – Upper Cabin

OPTIONAL SPECIFICATION

POWERTRAIN AND VEHICLE DYNAMICS

- Front and rear vented disc brakes with Bentley branded front red brake callipers

EXTERIOR

- Mulliner paint range
- Mulliner personal commision paint
- Extended paint range
- Gloss Black matrix lower bumper grille
- Black matrix grille with Black surround (part of Blackline Specification)
- Body coloured front bumper apron
- Power close rear doors
- Electronically retracting tow bar (fixed in some markets)*
- Heated, acoustic, IR front screen*
- Rear acoustic privacy glass*
- Jewel fuel and oil filler caps
- 21" 5 twin-spoke alloy wheel – black painted and bright machined
- 22" 5 spoke directional alloy wheel – painted
- 22" 5 spoke directional alloy wheel – black painted
- 22" 5 spoke directional alloy wheel – polished
- 21" all-season tyres (NCO)
- 22" summer tyres
- Space saving spare wheel
- Illuminated treadplates
- Self-levelling wheel badge by Mulliner

INTERIOR

- Choice of additional veneers: Burr Walnut by Mulliner, Dark Fiddleback Eucalyptus, Dark Stained Burr Walnut, Liquid Amber, open pore Crown Cut Walnut, open pore Dark Burr Walnut, open pore Koa, Piano Black, Tamo Ash by Mulliner
- Piano Linen by Mulliner – fascias and door waistrails
- Carbon fibre fascia, centre console and door waistrails

- Diamond Brushed Aluminium – Dark Tint fascia and door waistrails
- Metal Overlay in veneers
- Wing seat emblems
- Picnic tables
- Hand cross stitching
- Embroidered Bentley emblems
- Refrigerated bottle cooler
- Contrast binding to carpet overmats
- Heated, single tone, 3 spoke indented hide trimmed steering wheel
- Heated, duo tone, 3 spoke, hide trimmed steering wheel
- Heated, duo tone, 3 spoke indented hide trimmed steering wheel
- Steering wheel vertical spokes and gear lever in contrast colour by Mulliner
- Sports pedals
- Contrast seatbelts by Mulliner
- Deep pile overmats to front and rear
- Boot carpet in coordinating colour (seven colours)
- LED welcome lamps
- Luggage management
- Mulliner console drinks cooler
- Lambswool rugs by Mulliner

TECHNOLOGY AND ENTERTAINMENT

- Bentley Rear Entertainment System
- Head-up display
- Night vision
- Adaptive Cruise Control with Lane Guidance* (part of Touring Specification)
- Predictive Adaptive Cruise Control* (part of Touring Specification)
- Mood lighting
- Trailer stability control
- Bentley GPS Tracking System
- Trailer Assist*

- Digital TV tuner*
- B&O Signature Audio
- Naim for Bentley
- TV and digital TV tuner (in addition to digital radio)*

CONVENIENCE

- Additional information pack
- Battery charger*
- First aid kit and warning triangle
- Parking heater
- Remote controlled garage door opener*
- Valet key*

SPECIFICATION PACKAGES

- Five Seat Comfort Specification (NCO)
- Four Seat Comfort Specification
- Bentley Airline Seat Specification
- Bentley Diamond Illumination
- Styling Specification
- Blackline Specification
- Mulliner Colour Specification
- Touring Specification*
- All Terrain Specification
- Smoker’s Specification

NCO = No Cost Option. *Regional applicability.
†A separate Wi-Fi hotspot data plan is required from a local nominated mobile 54 network operator. Please visit My Bentley support site for details.

Bentayga Extended Wheelbase A

STANDARD SPECIFICATION

In addition to Bentayga Extended Wheelbase standard specification.

EXTERIOR

- ‘A’ exterior door badges
- Unique ‘A’ treadplates
- 21" 5 twin-spoke wheel – grey painted and bright machined

INTERIOR

- ‘A’ fascia badge
- ‘A’ seat emblems
- Contrast stitching
- Deep pile overmats
- Choice of three open pore veneers – Crown Cut Walnut, Koa and Burr Walnut
- Crown Cut Walnut veneer (NCO)
- Unique ‘wellbeing’ drivers information panel graphics

OPTIONAL SPECIFICATION

In addition to Bentayga Extended Wheelbase optional specification.

EXTERIOR

- 21" 5 twin-spoke alloy wheel – painted (NCO)
- 21" multi-spoke alloy wheel – silver painted
- 21" multi-spoke alloy wheel – black painted and bright machined
- 21" multi-spoke alloy wheel – polished

INTERIOR

- Harmony Diamond Quilt to seats and doors

SPECIFICATION PACKAGES

- Quilting Specification

Bentayga Extended Wheelbase Azure

STANDARD SPECIFICATION

In addition to Bentayga Extended Wheelbase A standard specification.

EXTERIOR

- Choice of 16 standard paint colours
- ‘Azure’ exterior door badges (in lieu of ‘A’ badge)
- 22” 10 spoke alloy wheel - silver painted
- Bright chromed matrix style grille to lower bumper apertures
- Jewel oil and fuel filler caps
- Power close rear doors
- Summer tyres (NCO)

INTERIOR

- Sports pedals
- ‘Azure’ seat emblems (in lieu of ‘A’ badge)
- ‘Azure’ fascia badge (in lieu of ‘A’ badge)
- ‘Azure’ illuminated treadplates
- Mood lighting
- Heated, duo tone, 3 spoke, hide trimmed steering wheel
- Harmony Diamond Quilt to seats and doors

SPECIFICATION PACKAGES

- Touring Specification*
- Quilting Specification

OPTIONAL SPECIFICATION

In addition to Bentayga Extended Wheelbase A optional specification.

EXTERIOR

- 21" multi-spoke alloy wheel – black painted and bright machined (NCO)
- 21" multi-spoke alloy wheel – polished (NCO)
- 21" multi-spoke alloy wheel – painted (NCO)
- 21" 5 twin-spoke wheel – grey painted and bright machined (NCO)
- 21" 5 twin-spoke wheel – black painted and bright machined (NCO)
- 22" 10 spoke alloy wheel – black painted and bright machined
- 22" 10 spoke alloy wheel – polished

Bentayga Extended Wheelbase Mulliner

STANDARD SPECIFICATION

In addition to Bentayga Extended Wheelbase Azure standard specification.

EXTERIOR

- Mulliner double diamond radiator grille - bright
- Mulliner double diamond wing vent
- Satin silver painted mirror caps
- Rear acoustic privacy glass
- LED Welcome Lamps
- 22” Mulliner alloy wheel – grey painted and polished with self-levelling wheel badge

INTERIOR

- Mulliner unique clock
- Mulliner 3D illuminated treadplates
- Mulliner deep pile overmats with accent micro piping and chrome retention caps
- Mulliner tri-colour split
- Blind stitching
- Mulliner seat embroidery
- Mulliner Harmony Diamond Quilt with accent colour on the diamond stitching
- Handcrafted three colour presentation box and key pouches
- Bentley Diamond Illumination
- Mulliner drivers information panel graphics
- Grand Black to fascias, door waistrails and picnic tables
- Veneered picnic tables
- Diamond Milled technical finish to centre console
- Chrome overlays to fascia, door waistrails and picnic tables

SPECIFICATION PACKAGES

- Bentley Airline Seat Specification

OPTIONAL SPECIFICATION

In addition to Bentayga Extended Wheelbase Azure optional specification.

EXTERIOR

- 22" Mulliner alloy wheel – black painted with self-levelling wheel badge
- 22" Mulliner alloy wheel – polished with self-levelling wheel badge

INTERIOR

- Embroidered Bentley emblems (NCO)

SPECIFICATION PACKAGES

- Four Seat Comfort Specification (NCO)

Bentayga Extended Wheelbase.



Engine: 4.0 litre twin-turbocharged V8
Max power: 542 bhp / 404 kW / 550 PS
@ 5,750 - 6,000 rpm
Max torque: 770 Nm / 568 lb ft @ 2,000 - 4,500 rpm
Transmission: 8-speed automatic
Driveline: Permanent all-wheel drive with 40:60 front-to-rear torque split
Top speed: 180 mph / 290 km/h
0-60 mph / 0-100 km/h: 4.5 seconds / 4.6 seconds
Wheelbase: 3,175 mm / 125.0 in
Overall length: 5,305 mm / 208.9 in
Width (across body): 1,998 mm / 78.7 in
Width (including mirrors): 2,222 mm / 87.5 in
Overall height: 1,739 mm / 68.5 in
Fuel tank: 85 litres / 18.7 UK gallons / 22.5 US gallons

Boot volume (4+1 seat): 380 litres
Gross weight: 3,250 kg
Fuel consumption (WLTP Cycle)
Low: 21.5 l/100 km / 13.1 mpg
Medium: 13.0 l/100 km / 21.7 mpg
High: 10.6 l/100km / 26.7 mpg
Extra High: 11.4 l/100km / 24.8 mpg
Combined: 12.8 l/100 km/ 22.1 mpg
CO₂ combined: 296 g/km
Driving range: 664 km / 413 miles

Fuel consumption
(NEDC Cycle WLTP Equivalent – Europe)
Urban: TBC
Extra Urban: TBC
Combined: TBC
CO₂ Emissions: TBC
Combined driving range: TBC
Fuel consumption (NEDC Cycle – ROW)
Urban: TBC
Extra Urban: TBC
Combined: TBC
CO₂ Emissions: TBC
Fuel consumption (EPA Cycle)
City driving (US): 14 mpg
Highway driving (US): 21 mpg
Combined (US): 16 mpg

Tyre applicability.

Please click on tyre specification for full product information and EPREL energy labels.

Size	Make	Tyre specification	Bentayga Extended Wheelbase	Bentayga Extended Wheelbase A	Bentayga Extended Wheelbase Azure	Bentayga Extended Wheelbase Mulliner
21"	Pirelli	SCORPION VERDE 285/45 R21 (113W) M+S XL (B)	●	●	●	●
		P-ZERO 285/45 ZR21 (113Y) XL (B)	●	●	●	●
		SCORPION WINTER 285/45 R21 (113W) M+S XL (B)	●	●	●	●
22"	Pirelli	P-ZERO 285/40 R22 (110Y) XL (B)	●	●	●	●



The model presented in this brochure includes optional specifications. Specifications, standard equipment, options, fabrics and colours are subject to change without notice. Your Bentley Retailer will always have the latest information. The name 'Bentley' and the 'B' wings design are registered trademarks of Bentley Motors Limited. Bentley Motors Limited acknowledges the rights of third parties in other trademarks. The models shown may include European and non-European specifications. © September 2023.