



By appointment
to HM The Queen
motor car manufacturers
Bentley Motors Limited
Crewe Cheshire



By appointment
to HRH The Prince of Wales
motor car manufacturers
Bentley Motors Limited
Crewe Cheshire



BENTLEY

CONTINENTAL GTC RANGE



Continental GTC Azure (V8) WLTP drive cycle: fuel consumption, mpg (l/100km) – Combined 22.6 (12.5). Combined CO₂ Emissions – 284 g/km.



Contents:

INTRODUCTION 3

DESIGN 9

PERFORMANCE 18

TECHNOLOGY 24

INTERIOR 32

PERSONALISATION 40

WORLD OF BENTLEY 56

SPECIFICATIONS & OPTIONS 59

Continental GTC S (V8) WLTP drive cycle: fuel consumption, mpg (l/100km) – Combined 22.6 (12.5). Combined CO₂ Emissions – 284 g/km.

The future starts here.

The Continental GTC represents the future of open-air grand touring.

With sleek lines carving a sharp path through the air, this astonishing convertible marks the beginning of a new era: one of unrivalled power, exquisite craftsmanship and cutting-edge automotive technology.

As well as providing an unbeatable combination of performance and luxury, it also offers a choice of five distinctive models. The Continental GTC is the consummate grand tourer, balancing beauty and power for a truly exhilarating drive, while the Continental GTC Azure has been designed with your comfort and wellbeing front of mind, delivering you to your destination both refreshed and relaxed.

The Continental GTC S provides enhanced driving dynamics and a striking design, and the Continental GTC Speed has been calibrated to quicken the pulse, with its formidable power and dramatic performance on the road. Or, for the pinnacle Continental GTC experience, the Continental GTC Mulliner offers standards of craftsmanship and luxury without equal.

Whatever model you choose, the Continental GTC makes every journey extraordinary.

Continental GTC Speed (W12) WLTP drive cycle: fuel consumption, mpg (l/100km) – Combined 20.0 (14.1). Combined CO₂ Emissions – 320 g/km.



A journey that never ends.

When it first emerged, the Continental GTC was revolutionary. Building on the glorious reputation established by the classic R-Type Continental, it became a symbol of everything a grand tourer should be, embodying Bentley's unique blend of exquisite style, unrivalled craftsmanship and thrilling power.

But the journey didn't end here. Bentley is always looking to the future, seeking new innovations that push the boundaries of what is achievable, in order to make tomorrow's experience even more exciting than today's. And so the Continental GTC continues to move ever forwards.

State-of-the-art technologies have been integrated throughout to enhance the driving experience, without ever overpowering it. Inside the cabin, exceptional attention to detail ensures unmatched comfort.

The open road beckons – and wherever you choose to travel, the Continental GTC will take you there in unprecedented style.





Continental GTC Azure.

Every single element of the Continental GTC Azure has been designed to enhance the comfort and wellbeing of both driver and passengers alike.

From the outside, it exudes an air of refinement thanks to unique Azure signatures, including a front grille featuring bright chrome vertical vanes, 'Azure' fender badges and striking 22" bright machined wheels with black painted detailing.

Illuminated treadplates and welcome lighting invite you inside, while acoustic glass adds to the calm ambience, the moment the doors close behind you. From then on you are cosseted in tactile comfort, thanks to the open pore Crown Cut Walnut veneers, deep pile carpets and the exquisitely stitched Organic Comfort Quilt pattern on the seats and the insides of the doors. Even the atmosphere is optimised, thanks to multi-zone automatic climate control and an air ioniser.

The ride is equally as soothing, with the smooth V8 engine and Bentley Dynamic Ride whisking you to your destination in the manner you'd expect from this elegant grand tourer.

Please refer to Specifications and Options pages 59-69 for standard and optional features. Not all options are available on all models and within all markets.

Continental GTC S.

The Continental GTC S makes a vivid first impression. With its dark, distinctive aesthetic setting it apart, the excitement begins from the moment you set eyes on it. With the roof up or down, sporty curves are intensified by the commanding Blackline Specification replacing bright chrome with brooding gloss black. Unique 'S' badging and a splash of colour from the red brake callipers elevate the striking design.

The captivating look continues inside the cabin, with the luxurious interior enhanced by a choice of eye-catching exclusive colour combinations to complement your choice of roof colour. Even the infotainment graphics are performance-inspired ensuring a stirring experience, right down to the very last detail.

On the road, you're free to push the powerful V8 engine to its limits. As you do so, the sports exhaust brings the convertible's every response to life, with a thrilling sound that makes the drive even more engaging.

Sport mode delivers elation at every turn as suspension, steering and throttle all become more responsive. Bentley Dynamic Ride provides the perfect combination of agility and control with every turn. There's no question, this is a drive you'll never forget.

Please refer to Specifications and Options pages 59-69 for standard and optional features. Not all options are available on all models and within all markets.



Continental GTC Speed.

With its W12 engine and unique transmission calibration, the Continental GTC Speed delivers the ultimate GT performance experience – all from within a luxurious cabin of unparalleled craftsmanship, technological innovation and precision detail.

The enhanced chassis system features rear-wheel steering and torque vectoring, combined with the Continental GTC's dynamic ride system. Together these ensure agility in all road and weather conditions, leaving you to enjoy the exhilaration of grand touring, done the Bentley way.

This peerless performance is unleashed to its full potential in Sport mode. When activated, the car responds to your exact requirements, creating a feeling of uncompromising control, accompanied by the distinctive roar emanating from the two oval exhausts.

At first sight, an array of distinguishing features hint at the car's sporting credentials. All the exterior brightware is finished in dark tint – a dark grey metallic paint – rather than the usual chrome, complementing the dark tint, matrix-style radiator and bumper grilles. Inside, 'Speed' badging can be seen on the fascia, the treadplates and even the headrest embroidery, proving that no detail is ever too small.

Exclusive silver painted 22" Speed wheels and Bentley branded red brake callipers add to the car's commanding road presence, while the sculpted Speed sports sills reinforce its uncompromising character.

The Continental GTC Speed pushes the boundaries of performance, giving drivers and passengers the opportunity to experience true driving joy in every sense.



Continental GTC Mulliner.

The Continental GTC Mulliner is the quintessential incarnation of a convertible grand tourer. It elevates the essence of a GT with breathtaking attention to detail in a celebration of the Bentley Mulliner team's unrivalled craftsmanship. Truly, this is the pinnacle of grand touring.

This attention to detail is evident from the moment you open your Mulliner key presentation box. From there, a world of bespoke luxury is unlocked. The interior lighting can be adjusted to suit your changing requirements – creating a perfectly personalised drive. Beautiful ornate finishes, from the vehicle silhouette overlays on the Grand Black veneer, to the Diamond Milled technical finish on the centre console, celebrate Bentley Mulliner's long tradition of coachbuilding and customisation.

Every element has been thoughtfully curated down to the finest details, such as the Mulliner clock face and the Satin Silver mirror caps. There is also an exclusive selection of three-colour seating and trim combinations – enabling you to apply your own aesthetic to the Continental GTC Mulliner.

The exterior boasts subtle, yet essential cues to the car's exclusive nature, including Mulliner illuminated door sills, Mulliner wing vents and the striking Mulliner double-diamond matrix grille. This is accentuated by the 22" Mulliner wheels with self-levelling badges.

Continental GTC Mulliner (W12) WLTP drive cycle: fuel consumption, mpg (l/100km) – Combined 20.0 (14.1). Combined CO₂ Emissions – 320 g/km.



Azure

DESIGN

A grand design.

The Continental GTC range represents a dramatic interpretation of Bentley's design language.

In developing these stunning cars, the vision was to completely reassess the grand tourer. What has emerged is powerful, luxurious and entirely new – a stunning example of automotive beauty.

A short front overhang and long bonnet complement classic grand tourer proportions, while the sweeping 'power line' – a feature of every Bentley – emerges confidently from between the headlamps, before tracing its path along the side of the car to the muscular rear haunch. The Continental GTC accommodates its fabric roof in streamlined style, looking sleeker than ever, whether the top is up or down.

Even when stationary, the Continental GTC looks dynamic. This is a car that evokes a sense of both elegance and speed.





Unprecedented strength and unrivalled style.

The body of the Continental GTC is crafted from aluminium, steel and advanced composite materials, for remarkable strength and stunning visual impact.

Its sculptural and sharply defined form is made possible by superforming technology, a precision technique that involves heating aluminium panels to 500°C. This is the first time it has ever been used for whole side panels on a car of this size. It has also enabled the design team to eliminate the B-pillar between the front and rear side windows, for an even sleeker appearance.

Unlike the rest of the car, the boot lid is crafted from composite materials, which means the aerial can be positioned beneath the surface, without being insulated. This allows you to stay connected to radio, TV and phone signals through My Bentley services, with no need for an unsightly external antenna.

The Continental GTC is a true leap forward in contemporary grand tourer design.



The finest details.

Every exterior detail has been carefully crafted to enhance the overall aesthetics of the Continental GTC.

LED matrix beam headlamps are set into polished chrome bezels. Designed to resemble illuminated gemstones when lit, their intricate interior patterns were inspired by cut-crystal glassware. The result is even more striking when they fade up to welcome you on your approach to the car.

The door mirrors, front grilles and badges are all finished in chrome to match, as are the 'Bentley' wording on the boot and the winged 'B' badges on the boot, the bonnet and the wheels. The backs of the chrome door handles, meanwhile, feature knurled surfaces – a thoughtful touch that aids grip.

At the rear, pairs of elliptical tail lamps glow red with the same cut-crystal effect, emphasising their three-dimensional depth. Their shape is reflected in the oval tailpipes beneath.

Please refer to Specifications and Options pages 59-69 for standard and optional features. Not all options are available on all models and within all markets.

Elegant in every landscape.

The exquisite interior features in the Continental GTC are amplified when the roof descends.

Particular attention has been paid to the fusion of interior and exterior design on display when the roof is open.

The sleek veneers that encircle the cabin sweep into the doors, emphasising both the interior space and exterior curves such as the haunch line. The roof closure mechanism and low tonneau cover allow for a stylish, streamlined appearance with the roof down.

With a wide range of interior and exterior colours to choose from, this is a remarkable opportunity to create your perfect Bentley – one guaranteed to stand out.

Continental GTC (V8) WLTP drive cycle: fuel consumption, mpg (l/100km) – Combined 22.6 (12.5). Combined CO₂ Emissions – 284 g/km.





Continental GTC Azure. Wellbeing redefined.

From the moment you set eyes on it, the Continental GTC Azure is a car that soothes the senses. Its elegant and sculpted exterior is aesthetically pleasing, offering subtle cues to the unique characteristics of this graceful car.

At the front, the new vertical vaned chrome radiator grille is both elegant and visually striking. 22" bright machined wheels gain extra definition from the black painted pockets between the spokes. Unique 'Azure' badging identifies the car, while jewel fuel and oil filler caps combine refinement with functionality. Electrically adjustable body-coloured door mirrors complete a beautifully balanced, harmonious design that is as easy on the eye as it is on the road.

As befits a car that is designed to create your own personal haven of wellbeing, the Continental GTC Azure offers a choice of 16 exterior colours, allowing you to match it perfectly to your unique taste.

Continental GTC S. Impossible to ignore.

At first glance, the striking Blackline Specification gives the sporty curves of the Continental GTC S a brooding look, with your choice of roof colour adding a personal touch. Dark tint headlamps and tail lamps complement the commanding aesthetic, promising more thrills around every corner.

On closer inspection, a glint of light reflecting off the 'S' badging, and a flash of red from the brake callipers behind the black painted 22" Sports wheel, hint at the joy to be had behind the wheel. While 'S' treadplates, sitting alongside illuminated 'Bentley' treadplates, invite you to step in and take your place in the driver's seat.

Finishing touches, such as extended Speed-style sills, black door mirrors and the sports exhaust with black quad tailpipes, enhance the mesmerising look of a car that promises to stir your soul.



Continental GTC Speed. Power takes shape.

One look at the Continental GTC Speed tells you the car means business. Even at rest, it exudes a brooding presence, with exterior detailing painted in dark tint – a dark metallic grey – rather than the standard chrome.

Its presence is heightened still further by the dark tint matrix grilles and forged 22" Speed wheels, available in a silver painted, black painted or dark tint finish. Exclusive 'Speed' badging on the front fender, Speed sports sills and red brake callipers complete the look – leaving you in no doubt that this is our most powerful Continental GTC yet.

And being a convertible, this is a car that can change its profile at will. When it's up, the roof enhances the flowing lines of this phenomenal grand tourer, cossetting you within. When down, it opens up a world of thrilling excitement where you're free to interact with your surroundings as they speed by.

You can choose to crown your Continental GTC Speed with a choice of hood colours, including Dark Grey Metallic, Camel, Tweed and more.





Continental GTC Mulliner. The height of style.

The Continental GTC Mulliner represents the very pinnacle of Bentley's grand touring experience. And, as such, it elevates the car's design thanks to impressive levels of style and craftsmanship.

From the front, the unique Mulliner front grille with chrome inner diamond and gloss black outer diamond creates an eye-catching visual effect with true depth, while the Mulliner branded wing vents leave no doubt as to this car's exclusive character.

But there are also more subtle touches that set it apart. Satin Silver mirror caps add a distinctive two-tone aesthetic, while unique painted and polished 22" 10 spoke Mulliner wheels carry the car along with a quiet sense of authority. And this elegance and poise remain uninterrupted thanks to the self-levelling wheel badges that ensure the Bentley 'B' remains constantly upright as the wheels rotate.

Mulliner craftsmanship is taken to new heights – literally – thanks to the exclusive hand-stitched quilting of the roof tonneau cover. This luxurious and intricate pattern embraces both contrast and accent stitching to create the distinctive Bentley 'Diamond-in-Diamond' quilting design concept, elevating the aesthetic with a tactile finish you can both see and feel.



PERFORMANCE



Designed to be driven.

The Continental GTC has been designed from the ground up to deliver truly impressive handling, without compromise to the refined ride for which Bentley is famous.

The engine sits low over the front axle for optimum weight distribution, resulting in exceptional handling and agility.

With a V8 engine, the Continental GTC is the consummate grand tourer, offering an exhilarating driving experience and exceptional handling. The Continental GTC Azure and Continental GTC S come equipped with Bentley Dynamic Ride for even greater comfort and control.

The Continental GTC Speed harnesses the power of the W12 engine in conjunction with Electronic All-Wheel Steering and Bentley Dynamic Ride, an innovative 48-volt electronic active roll control system that continuously adjusts the anti-roll bars for reduced body movement and supremely agile handling.

Meanwhile, the Continental GTC Mulliner lets you choose the engine that suits your driving style.

Large, wide wheels on every Continental GTC model ensure a greater contact area with the road surface at all times – critical when accelerating or braking. They are also wider at the back, for improved traction and cornering balance.

The electromechanical power steering feels agile and effortless, with the entire car tuned to deliver stability through corners, ensuring unmatched comfort for all occupants.

Please refer to Specifications and Options pages 59-69 for standard and optional features. Not all options are available on all models and within all markets.



Advanced powertrain technology.

Whichever powertrain your Continental GTC has, you'll benefit from a dual-clutch, eight-speed transmission.

Delivering much faster, smoother gear shifts than a traditional automatic gearbox, it makes the most of the engine's phenomenal capabilities, maximising fuel economy while propelling the car forward with a smooth, seamless surge of acceleration.

In Sport mode, gear changes are fastest, delivering an uninterrupted flow of torque and truly thrilling acceleration. In Comfort mode, the changes are slowed slightly, to allow for an incredibly smooth ride.

The Active All-Wheel Drive system delivers rear-wheel drive under regular conditions, but when required, it also feeds instantaneous power to the front axle for complete driving confidence. Featuring a map-controlled, electronic multi-plate clutch, its sensors constantly monitor the rotation of each wheel. By combining this data with the overall velocity and lateral movement of the chassis, the car can respond to changes in road conditions instantaneously.

The most formidable power of the range can of course be experienced with the Continental GTC Speed and Continental GTC Mulliner. Combining all of the above with the addition of All-Wheel Steering and electronic torque vectoring, the Continental GTC Speed and Continental GTC Mulliner deliver increased cornering dynamics – ideal for the twists and turns of any journey. This grand tourer's responsiveness is further amplified by the optional carbon ceramic brakes for stopping power derived from aerospace technology. The result is best experienced in person to be believed.

Drive it your way.

The driving characteristics of the Continental GTC can be customised to suit your personal style and mood.

As the first car in the Bentley range to incorporate a three-chamber, air-spring suspension, it combines extraordinary handling with a remarkably refined, luxurious ride.

A choice of Drive Dynamics modes defines the experience you'll have on your journey. Comfort optimises the chassis and drivetrain for luxurious cruising and the feeling that you're driving on air. Sport, on the other hand, retunes the engine instantly for a sharper, more dynamic response.

The active suspension and chassis settings are also altered, delivering harder damping and more direct steering turn-in, for greater agility and a truly thrilling drive.

Bentley mode, meanwhile, provides the optimum combination of both. And there is also Custom mode, which allows the driver to specify their own setting for powertrain response, handling and steering.

All four Drive Dynamics modes are easily accessible via a knurled control dial in the centre console. Just one more example of Bentley's unrivalled attention to detail.





Breathtaking acceleration.

The Continental GTC, Azure, S and Mulliner models all offer irresistibly dynamic performance thanks to the class-leading V8 engine within.

This responsive 4.0 litre V8 engine lets you accelerate from 0 to 60 mph in 4.0 seconds (0 to 100 km/h in 4.1 seconds) and on to an exhilarating top speed of 198 mph (318 km/h)*. Twin-scroll turbochargers located in the 'V' of the engine help to increase responsiveness still further.

The characteristic burble of a Bentley V8 engine is unmistakable and is especially satisfying in Sport mode.

An involving, agile drive is at the heart of the Bentley V8 experience, and the Continental GTC takes it to a thrilling new level.

*Subject to USA certification.

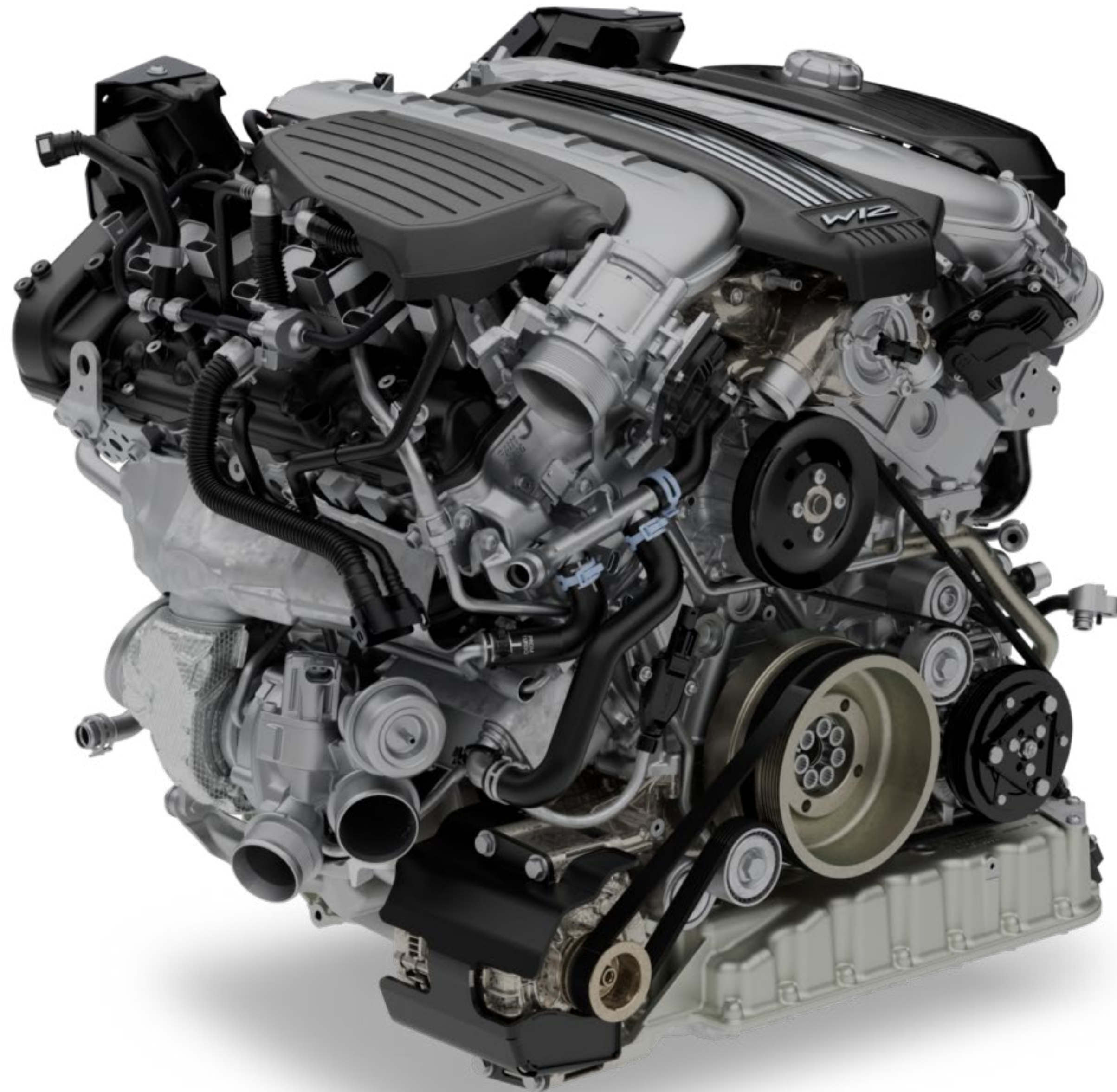
Effortless power.

Built exclusively at Bentley Motors in Crewe, England, the 6.0 litre W12 engine within the Continental GTC Speed, and available for the Continental GTC Mulliner, embodies the next generation of Bentley drivetrain innovation.

With a maximum power output of 650 bhp (659 PS / 485 kW) and torque of 900 Nm (664 lb ft), it can propel the car from 0 to 60 mph in a phenomenal 3.6 seconds (0 to 100 km/h in 3.7 seconds) – and on to an astonishing top speed of 208 mph (335 km/h).

The unique Speed engine and transmission calibration delivers a fast response, astonishing power and sharp gear changes. This, combined with the new weight balance, provides an uncompromising delivery of acceleration and control for those behind the wheel.

Effortless, seemingly limitless acceleration like this has long been a Bentley hallmark. With the Continental GTC, it is pushed to new heights, for performance unmatched in the world of the convertible grand tourer.





TECHNOLOGY



An intuitive in-car experience.

25

The Continental GTC is equipped with state-of-the-art technology, inside and out.

A 12.3" high resolution touchscreen sits in the centre of the fascia, providing both driver and passenger with access to a cutting-edge infotainment system. The wide screen can be split into two or three independent windows – providing key interface and navigation for the driver, while allowing the front seat passenger to use other functions such as selecting music tracks or controlling the heating and ventilation system. And thanks to a built-in proximity sensor, relevant on-screen icons are highlighted whenever a hand nears the screen, making the system even easier to use on the move.

Information at your fingertips.

A high-resolution digital display behind the steering wheel shows an easy-to-read speedometer and rev counter, with digital chrome bezels and super-fine pointers.

In Expanded mode, one gauge can be minimised to show trip computer data, the map or details of any media currently playing, while an optional Head-Up Display can present important driver information on the windscreen itself, including your speed, the speed limit and directions from the navigation system.



The Bentley Rotating Display.

The Continental GTC Mulliner features a true world first. The Bentley Rotating Display is a unique demonstration of Bentley's remarkable approach to technology and craft – one that allows you to personalise the car's instrumentation according to your preferences.

When the engine roars into life, a veneered section of the fascia physically rotates to reveal the 12.3" high-resolution touchscreen. Designed for unrivalled ease of use, the touchscreen features a proximity sensor that highlights the on-screen controls as you reach towards it.

The screen can be configured to display the information of your choice, while a home screen display mode allows you to see up to three screens at once. For example, you may view the navigation map, music controls and your mobile phone call list.

For a more classic instrumentation style, a further rotation reveals another veneered fascia panel, this one including three analogue dials with polished chrome bezels. A final reverse-rotation brings back the initial, veneer-only surface – for a clean, sleek look.

Please refer to Specifications and Options pages 59-69 for standard and optional features. Not all options are available on all models and within all markets.

All the assistance you expect.

A comprehensive suite of assistance systems allows the driver to enjoy the very latest automotive technology.

Adaptive Cruise Control regulates the speed of the car, relative to the vehicle in front. Radar sensors scan the road ahead, enabling you to maintain your chosen speed. If the car in front slows, so does yours – right down to a stop, if required. When the traffic begins to move again, your car will accelerate to your selected cruising speed – and all without your feet ever touching the pedals.

Blind Spot Assist monitors the area immediately to the sides and the rear of the car. If you attempt to move into a lane in which another vehicle is approaching, a visual warning is displayed on the exterior mirror. Lane Assist uses a video camera to detect any drifting across lane boundaries, making small corrections as necessary.

Integrated Traffic Sign Recognition detects speed limits and zones in which overtaking is prohibited.

The information is displayed in the digital instrument cluster and the Head-Up Display, if fitted. Even temporary speed restrictions can be detected.

With the Park Distance function, the car sounds a warning whenever it gets too close to a parked vehicle at the front or the rear. An accompanying visual warning appears on the touchscreen, alongside the view from the rear-facing camera. Park Assist searches for a suitable car parking space and then will operate the steering wheel with the driver controlling the brake and accelerator to park the car in that space.

Three more cameras fitted around the car enable it to display a 360-degree view. You can even opt to see the view from each one, when negotiating tight parking spaces.

With Rear Crossing Traffic Warning and Exit Warning among an extensive suite of driver assistance features, this is a car you can drive with complete confidence at all times.

Please refer to Specifications and Options pages 59-69 for standard and optional features. Not all options are available on all models and within all markets.





Intuitively connected.

A suite of connected services in the Continental GTC uses real-time information to make your journey safer, smarter and more convenient.

With a built-in Wi-Fi hotspot, you and your passengers can stay connected via your personal devices and the Apple CarPlay®*-enabled infotainment system.

Real-time traffic information incorporates up-to-the-minute traffic data into the navigation system, enabling you to plan your journeys more effectively. Point of Interest search also gives you easy, voice-controlled access to information about notable locations you may encounter on the way.

In the event of an accident, Private eCall* will connect you to an emergency call centre. If you ever break down, Roadside Assistance Call provides direct contact with the Bentley Roadside Assistance team.

You can even check on your car when you're elsewhere. My Car Status, a feature accessed via the My Bentley smartphone app, provides useful information about your vehicle's status, wherever you are.

*Regional applicability.

A car that sees in the dark.

Intelligent LED matrix beam headlamps allow the main beam to be used continuously, with no intervention.

The matrix itself comprises 55 individually controlled LEDs, each one capable of switching on, switching off, or dimming, as required. Central sections of the main beam will deactivate when oncoming traffic is detected, while the rest of the LEDs illuminate the road ahead.

The system will automatically optimise the beam for different conditions – on the highway, in the city or in the country – and the LEDs will even dim to stop the light reflected from road signs dazzling the driver.

An optional Night Vision camera can aid driving in poorly lit environments, by alerting the driver to obstacles beyond the range of the headlights. An infrared camera detects the presence of obstacles that emit heat, highlighting them on the instrument digital display.

Please refer to Specifications and Options pages 59-69 for standard and optional features. Not all options are available on all models and within all markets.



Make the most of every season.

Come rain or shine, there is no better car than the Continental GTC.

Available in a choice of stunning colours and fabrics, the four-layer roof is so secure and well-insulated when closed that it's easy to forget you're in a convertible.

It can be lowered quickly at the touch of a button, even when driving at speeds of up to 30 mph (50 km/h) – so you'll never need to stop when the sun comes out.

To complement the blissful sensation of wind in your hair, both the driver's seat and front passenger seat can include cooling functions, to keep backs and legs comfortable, even on the hottest afternoons. For colder days, the Continental GTC Azure and Mulliner feature heated front armrests and a neck warmer in each front seat. Elegantly integrated into the Comfort Seat Specification, the neck warmer gently circulates warm air around your neck and shoulders.

Whatever the conditions, there's no better way to experience the open road.

Please refer to Specifications and Options pages 59-69 for standard and optional features. Not all options are available on all models and within all markets.

Audio and in-car ambience.

The Continental GTC can be commissioned with a choice of three audio systems. The Bentley Signature Audio system with 650 Watts is tuned by Bentley, or you can choose the 1,500 Watt Bang & Olufsen audio system with BeoSonic sound control.

For really serious audiophiles, the Naim for Bentley premium audio system packs in 18 separate speakers, each with its own amplification, delivering a mighty 2200 Watts of power. Plus, with two active bass units in the front seats it really does deliver the ultimate audio experience.

An active carbon filter traps dust, pollen and other particles, ensuring the atmosphere inside remains fresh at all times, while an ioniser purifies the air still further.





INTERIOR

Inspired interior design.

The cossetting interior of the Continental GTC embraces new technology like no other Bentley before it, while accentuating the unrivalled comfort and ambience for which Bentley interiors are renowned.

As with all models, the interior design began with a fascia built around the Bentley symmetrical 'wings' emblem. This time, the design team took the metaphor further.

A powerful centre console runs between four incredibly comfortable, ergonomically designed Continental GT seats. It rises smoothly into the fascia, with an uninterrupted flow of wood or aluminium sweeping around the driver and passengers.

The fascia panels themselves can be specified with a choice of exquisite single veneers, striking dual veneers or technical finishes.

To showcase Bentley's unmatched attention to detail, the designers have selected a striking range of hides and interior colour combinations – which doesn't stop at the seats. The handcrafted leather extends to a unique 'floating' leather dashboard, which flows seamlessly into the door casings.

The diamond knurling design on the rotary controls reflects the light beautifully, affording a soft, refined feel, while subtle bronze-coloured inserts provide the perfect finishing touch. In the rear, the interior design reflects that of the car's powerful haunches, evoking a unique connection between the interior and the exterior.

Throughout the car, there is emphasis on authentic and unique materials, such as an optional centre console inspired by the 'Côtes de Genève' finish found inside the finest watches.





A place for everything.

Every control in the Continental GTC has been positioned with great thought, so everything from the seats to the air conditioning can be operated intuitively, even while driving.

Storage has been cleverly integrated into the interior design, with space for a smartphone or wallet located in either side of the centre console. A covered cup holder sits behind the gear lever and the door storage has the capacity to hold a one-litre bottle. Twin USB-C ports can be found in the discreet space beneath the front armrest – perfect for storing and charging your digital devices – with inductive charging also included for extra convenience.

Seat of power.

Every seat in the Continental GTC has been designed to provide the ultimate in support and comfort – as you would expect from a car with grand touring in its blood.

Hand-stitched in supple leather hides, they have been designed in a sports style, without compromising on comfort. The heated 12-way adjustable front seats feature two memory settings each, while for the ultimate in driving luxury, both the Continental GTC Azure and Continental GTC Mulliner come with the Front Seat Comfort Specification, offering a 20-way seat with electrically adjustable headrests and bolsters, alongside ventilation and multiple massage modes.

The Continental GTC S features fluted seats, while the Continental GTC Speed benefits from motorsport-inspired Precision Diamond Quilt upholstery. The Continental GTC Azure, meanwhile, comes with the exquisitely crafted Organic Comfort Quilt pattern. For those who choose the Continental GTC Mulliner, an extra accent stitch adds another level of character to the bolsters and upper areas.

The perforated centre panels are exceptionally smooth, inviting you to sit back and enjoy the car's state-of-the-art heating, ventilation and massage functions. And just like every other switch in the car, the seat controls have been thoughtfully placed: the memory selectors are located in the door pads, so you can choose your preferred seating position before you even sit down.

Please refer to Specifications and Options pages 59-69 for standard and optional features. Not all options are available on all models and within all markets.



A haven of wellbeing.

Your personal wellbeing takes centre stage inside the Continental GTC Azure. Whether it's sight, sound or touch, everything has been carefully designed to soothe the senses.

Azure illuminated treadplates and LED welcome lighting gently beckon you into the cabin. And once inside, footwell and ambient lighting create a haven of calm, relaxing body and mind in preparation for the journey ahead.

With the roof up, set the Mood Lighting to create the ambience of your choosing, while acoustic side glass ensures that you are cocooned in a place of quiet and calm. Even with the roof down, you're still immersed in tactile comfort, thanks to the open pore Crown Cut Walnut veneer, deep pile carpets and the gentle Nappa leather of your seat, exquisitely crafted with its Organic Comfort Quilt stitching pattern.

The result is a cossetting and comforting haven that stays with you all the way to your destination.



Surround yourself in sporty style.

The unique seat design, with fluting running down from the headrest and embroidered 'S' emblem, plus the dedicated colour combination of the Continental GTC S add to its sporty credentials. The subtle, yet distinctive, 'S' fascia badge serves as a reminder of the craftsmanship that's gone into this stunning grand tourer.

Piano Black veneer to the fascia reflects the road presence of the exterior with its dark, brooding aesthetic. Or, for a more performance-focused look, there's a choice of technical finishes including high gloss carbon fibre.

Once behind the Dinamica-trimmed, heated, 3 spoke steering wheel, the dynamic experience is completed by the fully digital driver's information panel. Choose the view that suits your driving style – performance-inspired dial graphics, influenced by first-class chronograph pieces, or an expanded option providing clear visuals of maps and media.

With a host of additional options to create the cabin that reflects the soul-stirring journey ahead, you can always look forward to an unforgettable drive, over any distance.



Heighten your senses.

The interior of the Continental GTC Speed is almost as dramatic as the drive you're about to embark upon. The optional Carbon Fibre fascia with Piano Black centre console, unique Speed colour combination and fascia badge hint at the power that's set to be unleashed the second you start the W12 engine. And the tactile Dinamica gear lever, heated Dinamica steering wheel and sports pedals are all designed to immerse you in the thrilling drive ahead.

The elevated status of the Continental GTC Speed is evident in the Precision Diamond Quilt on display throughout the cabin, along with Dinamica panels and 'Speed' embroidered headrests. The Piano Black veneer can even be commissioned with an optional colour-matched pinstripe. After all, this is a car that has been designed to excite inside and out.

As well as whisking you to your destination at breathtaking speed, the Continental GTC Speed also ensures you arrive there in complete comfort, thanks to multi-zone automatic climate control, air ioniser and electric 12-way heated front seats.



Unrivalled craftsmanship.

As befits the pinnacle vehicle in the range, the Continental GTC Mulliner offers a level of craftsmanship, personalisation and style that is truly without equal.

The cabin interior can be tailored to your own individual style and taste, with a choice of sumptuous leathers and hides and a series of eight unique three-colour seating and trim combinations. Each of the three-colour combinations includes a main hide, secondary hide and accent hide with a contrast and accent stitch. Featuring the stunning Precision Diamond Quilt by Mulliner, the entire cabin exudes a level of craftsmanship that has become synonymous with the Mulliner name over centuries.

This craftsmanship is also on display in the Grand Black veneer of the driver's instrument panel, which is emblazoned with a striking convertible silhouette, denoting its Mulliner status. The veneer can be further personalised through Bentley Mulliner Personal Commissioning, allowing you to colour-match a Piano veneer to your chosen interior hide or external paint selection.

Perhaps the most striking element on display, however, is the ornate Mulliner clock – an exclusive brushed silver timepiece with a chrome bezel surround that complements the Diamond Milled technical finish of the centre console. And as a perfect symbol of how this stunning car mixes age-old craftsmanship with cutting-edge innovation, the dials on the driver's digital display perfectly mirror the traditional design of the timepiece.

The Continental GTC Mulliner also offers stunning and immersive mood lighting as standard, allowing you to control the ambience within the cabin to perfectly suit your current state of mind. Combined with the LED welcome lamps that beam the Bentley wings onto the ground as you open the door on entering, they are a symbol of how thoughtful design and luxury come together in this extraordinary car to welcome you like no other.



A close-up, high-angle shot of a car's interior. The focus is on a black leather seat with a prominent quilted diamond pattern. A chrome air vent is visible on the left side of the seat. The background is blurred, showing more of the car's interior and a portion of a wheel.

PERSONALISATION

A true collaboration.

Since 1919, Bentley cars have been a collaboration between the exceptional people who make the cars and the remarkable people who commission them. That tradition continues with the Continental GTC.

With every car built by hand at the Bentley factory in Crewe, the opportunities to make your car your own are practically limitless. An extensive range of options sees the best of traditional and contemporary materials combined with the latest production techniques and time-honoured Bentley craftsmanship.

And should you desire even more freedom to tailor your Continental GTC, the Mulliner Personal Commissioning team in Crewe can undertake completely personal modifications to meet your specific requirements.



Personal commissioning from the expertise of Bentley Mulliner.

The very first drivers bought a vehicle comprising just an engine, drivetrain, four wheels and a set of controls. The rest required a coachbuilder, such as Mulliner. Still, today, no-one is better placed to help make your car an expression of your unique style.

At Bentley, the Mulliner Personal Commissioning team provide individual customisation which is virtually limitless. For instance, the colour of any object in your possession can be matched to create your own personal paint colour. The same is true for your hides – any colour you can find, or dream, can be perfectly matched and made for you only.

The team in Crewe can also create personalised embroidery for your seats, handstitched from any design of your choosing. Not to mention exquisite marquetry inlays to your veneers, manifesting your unique vision through timeless artisan craft.

To explore the endless possibilities, simply visit the **website** or contact your Bentley Retailer and ask about our Personal Commissioning Guide.

Exterior finish.

Colour can be a powerful expression of who you are. That’s why we offer a wide range of exterior colours that have been carefully curated by the Bentley design team, each one chosen specifically to emphasise the sleek lines of the Continental GTC and give it a unique presence on the road.

There are seven standard exterior paint colours for the Continental GTC and Continental GTC S, and 16 for Continental GTC Azure, Continental GTC Speed and Continental GTC Mulliner. You can also choose from an extended range – which includes the jewel-like new Topaz Blue – plus a palette of solid, metallic, satin and pearlescent Mulliner paints. In total, it adds up to over 80 finishes.

For the ultimate in personalisation, however, **Personal Commission Paint by Mulliner** allows you to match a colour that is as unique as you are. The only limit is your imagination.

CONTINENTAL GTC AND CONTINENTAL GTC S COLOURS.

- Beluga (Solid)
- Dark Sapphire
- Glacier White (Solid)
- Moonbeam
- Onyx
- St. James’ Red (Solid)
- Thunder

CONTINENTAL GTC AZURE, SPEED AND MULLINER COLOURS.

- Beluga (Solid)
- Dark Sapphire
- Glacier White (Solid)
- Moonbeam
- Onyx
- St. James’ Red (Solid)
- Thunder
- Dark Cashmere
- Granite
- Hallmark
- Havana
- Marlin
- Meteor
- Midnight Emerald
- Patina
- Portofino

Please refer to Specifications and Options pages 59-69 for standard and optional paints. Not all options are available on all models and within all markets.





Wheels.

A wide range of wheels allows you to accentuate the style of your Continental GTC. Choose from a selection of striking finishes, including an elegant painted option, a stunning bright polished effect, a sporting black and a dramatic black and bright machined finish. Each Continental GTC model comes with a specific choice of wheel that reflects the car's character.



21" 5 tri-spoke alloy wheel – painted



21" 5 tri-spoke alloy wheel – grey painted and bright machined



21" 5 tri-spoke alloy wheel – black painted and bright machined



21" 10 spoke alloy wheel – grey painted and bright machined



21" 10 spoke alloy wheel – polished



22" 10 spoke alloy wheel – silver painted and bright machined



22" 10 spoke alloy wheel – black painted



22" 10 spoke alloy wheel – black painted and bright machined



22" 5 open-spoke alloy wheel – polished



22" 5 open-spoke alloy wheel – black with polished edge



22" Sports alloy wheel – black painted



22" Sports alloy wheel – Pale Brodgar Satin



22" Speed alloy wheel – silver painted



22" Speed alloy wheel – black painted



22" Speed alloy wheel – dark tint



22" Mulliner alloy wheel – painted and polished with self-levelling badge



22" Mulliner alloy wheel – black painted with self-levelling badge



22" Mulliner alloy wheel – black painted and polished with self-levelling badge

Veneers.

Bentley is unique in its enthusiasm for natural materials and exquisite, handcrafted finishes.

Bentley works with a wide variety of tree species, with all wood sourced ethically and sustainably from forests around the world.

Options include open pore, high gloss and dual veneers, with every piece painstakingly sanded and lacquered in a process that can take up to ten days.

You can also choose from nine eye-catching dual veneers – open pore, high gloss or painted to achieve a Piano finish. The chosen wood is applied to the upper fascia, contrasting with a stunning Grand Black veneer on the lower fascia and centre console. The two veneers are separated by an elegant 3 mm polished chrome pinstripe running the length of the fascia and out onto the doors, in an uninterrupted line. The pinstripe can also be selected as an option with a single veneer.

Technical finishes are available as an alternative to wood, such as Carbon Fibre and new Dark Tint Diamond Brushed Aluminium.

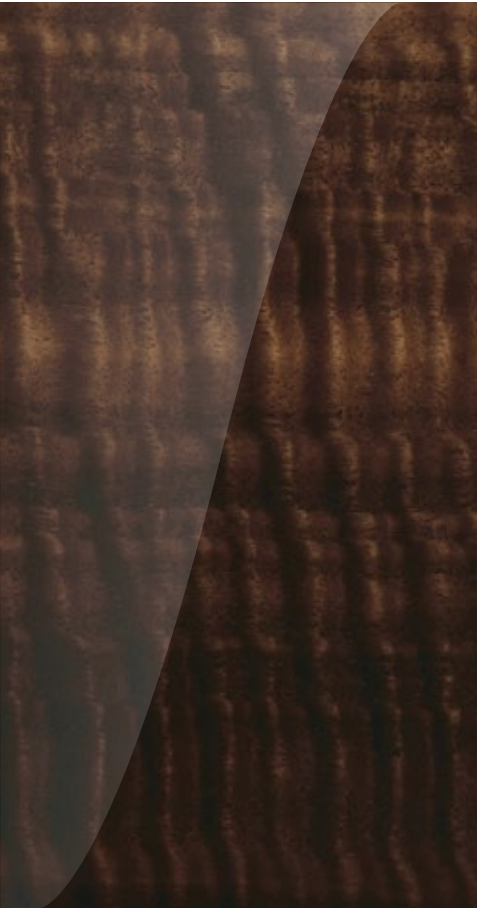
Please refer to Specifications and Options pages 59-69 for standard and optional features. Not all options are available on all models and within all markets.



Single veneers



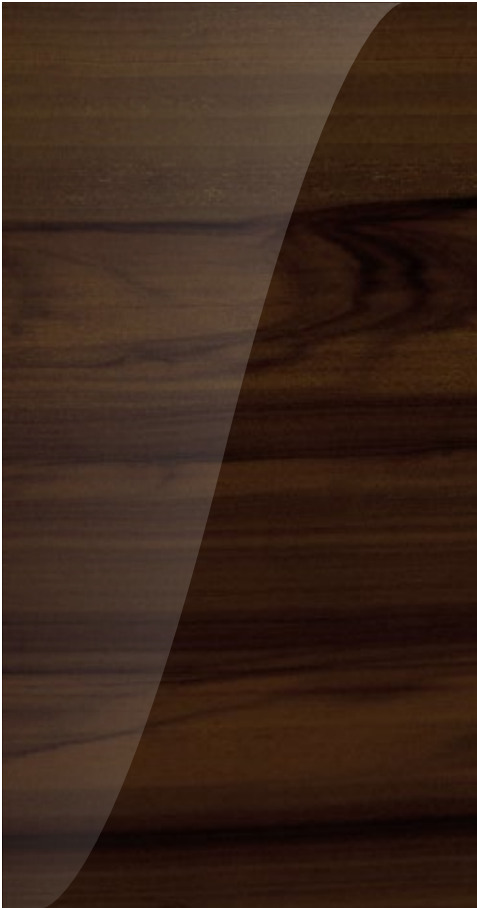
Burr Walnut by Mulliner



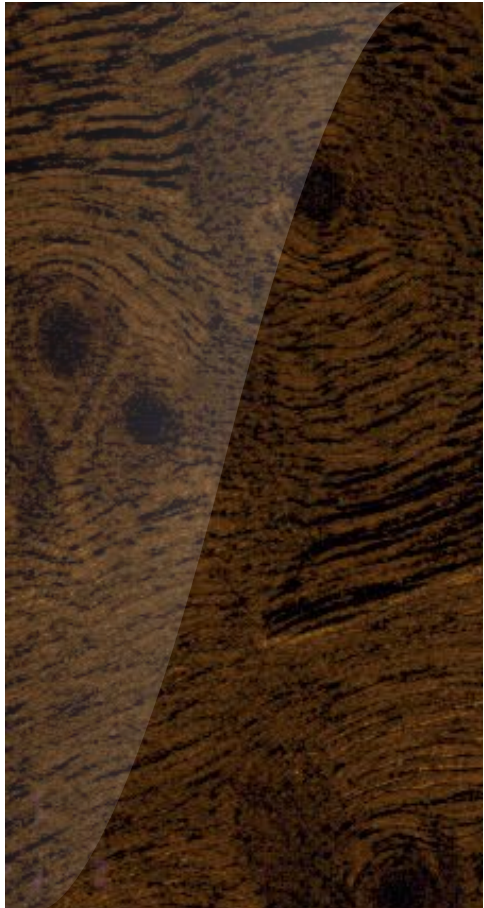
Dark Fiddleback
Eucalyptus



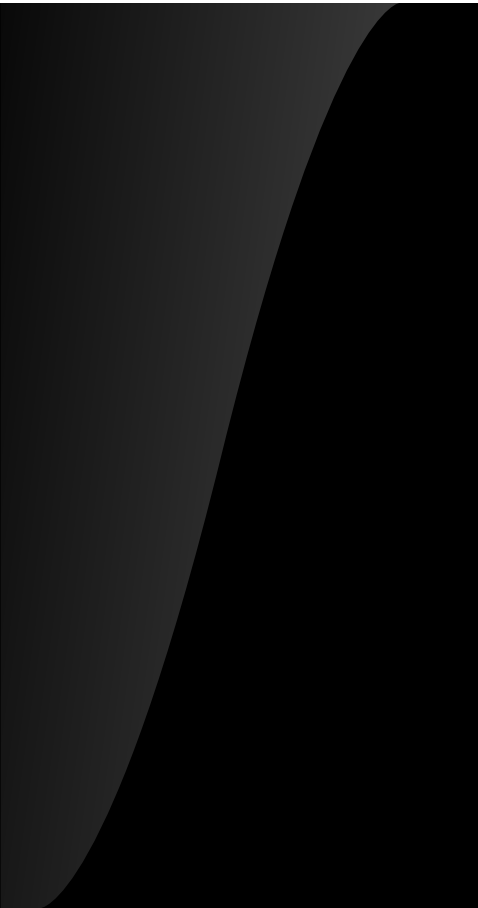
Crown Cut Walnut



Liquid Amber



Dark Stained
Burr Walnut



Piano Black



Piano Linen by Mulliner



Open pore
Dark Burr Walnut



Open pore
Crown Cut Walnut



Open pore Koa



Grand Black with metal
inlay*

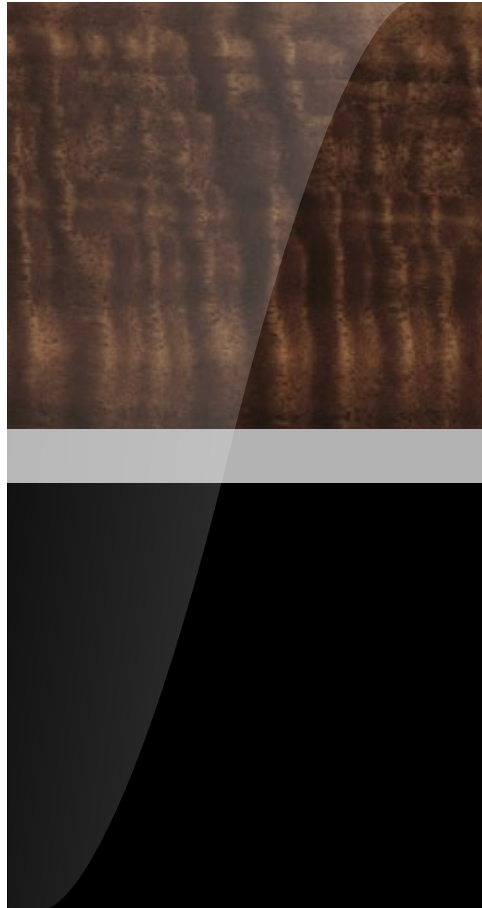
Dual Veneers by Mulliner



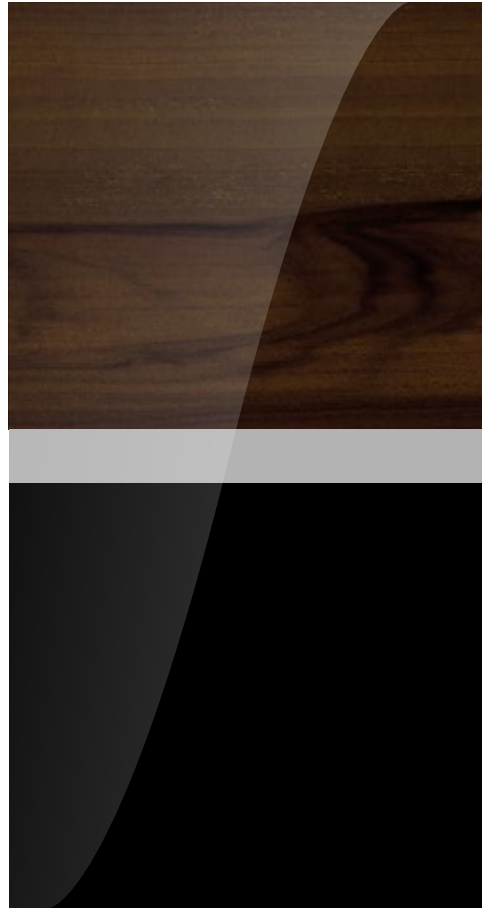
Burr Walnut & Grand Black



Crown Cut Walnut & Grand Black



Dark Fiddleback Eucalyptus & Grand Black



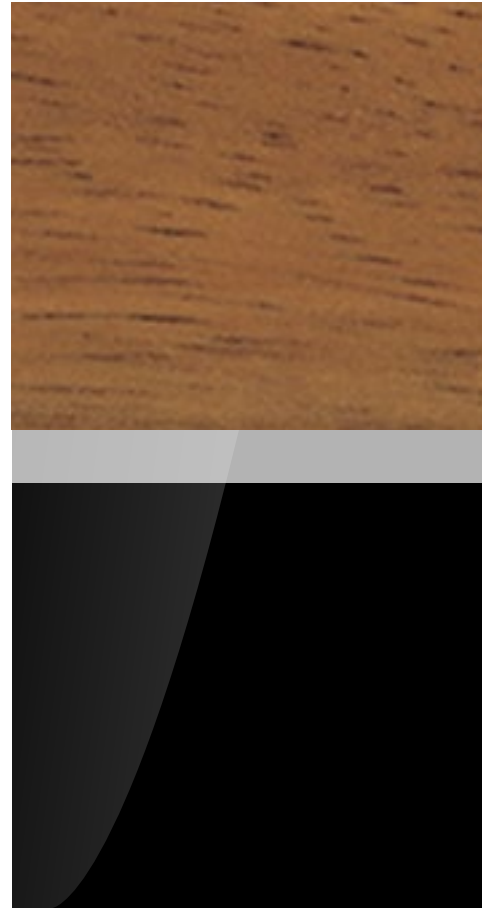
Liquid Amber & Grand Black



Dark Stained Burr Walnut & Grand Black



Open pore Dark Burr Walnut & Grand Black



Open pore Koa & Grand Black

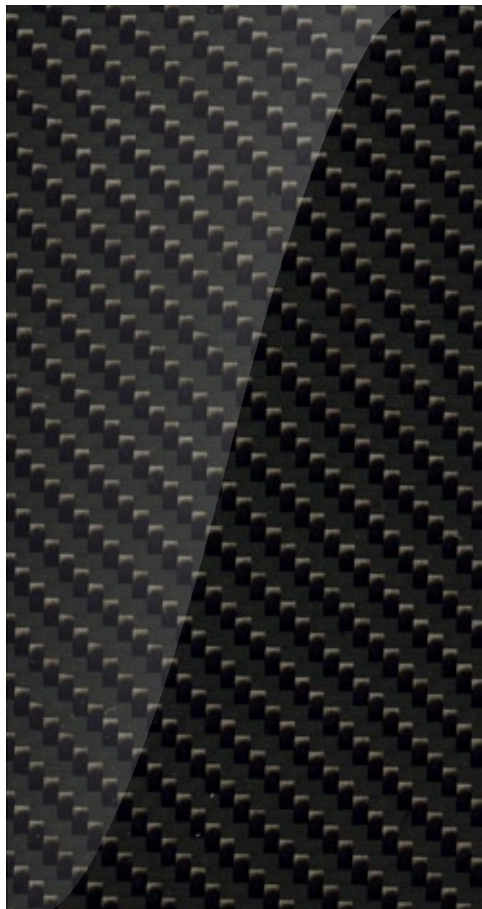


Open pore Crown Cut Walnut & Grand Black

Technical Finishes



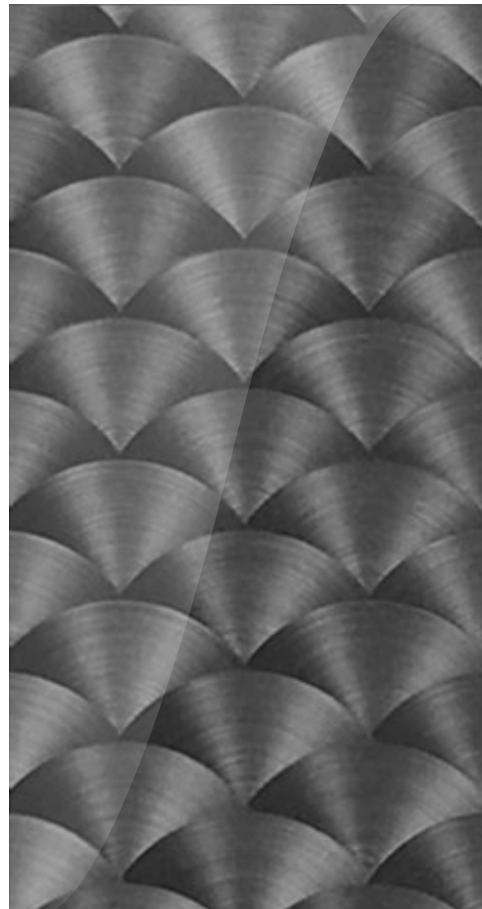
Piano Linen & Grand Black



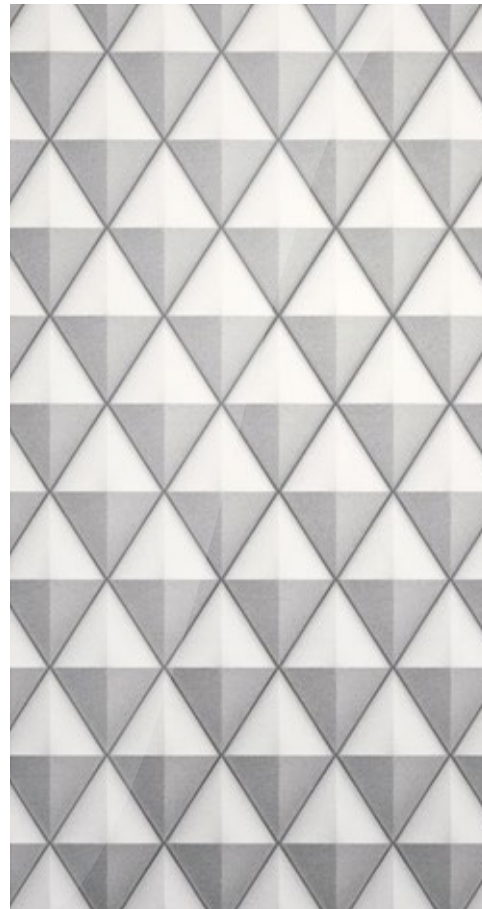
Carbon Fibre



Engine Turned Aluminium – Bright



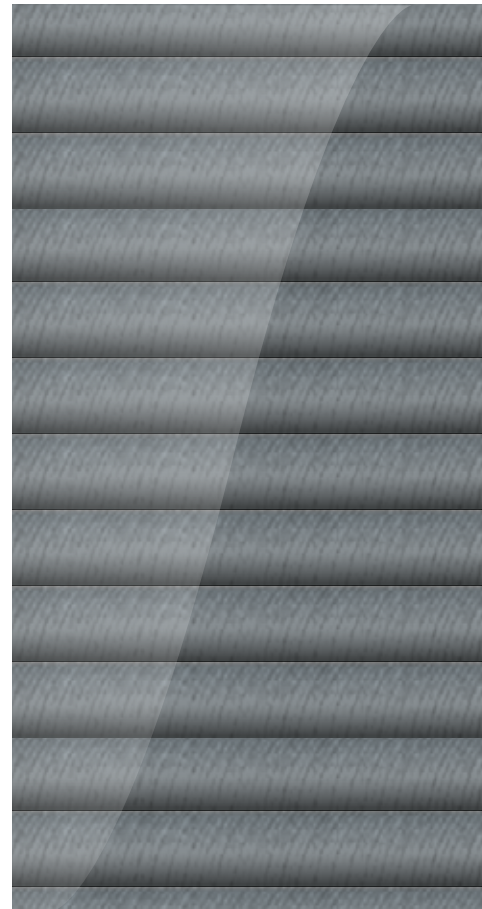
Engine Turned Aluminium – Dark Tint



Diamond Milled Aluminium*



Diamond Brushed Aluminium – Dark Tint**



Côtes de Genève*

Please refer to Specifications and Options pages 59-69 for standard and optional veneers.
Not all options are available on all models and within all markets. *Available on the centre console only. **Applied to fascia and door waistrail.

Hides.

Every inch of the interior of the Continental GTC is upholstered by hand. Crafting the hides is a time-honoured process involving skills that take years to learn.

From the seats to the fascia and the steering wheel, every part of this extraordinary car requires a different approach. Which is why sections of the hide with high natural elasticity are used for curved surfaces like the seats, rather than for piping or flatter areas such as door inserts. The steering wheel, meanwhile, is covered in a different type of leather, more resistant to the natural chemicals it absorbs from the driver's skin.

A wide range of leathers are available for the Continental GTC – every colour chosen by the Bentley design team to complement the interior perfectly. Or for a more sustainable alternative, the Continental GTC S and Continental GTC Speed offer a sporty mix of Dinamica and hide, providing the perfect match for its sporting credentials.



Hides



Burnt Oak



Damson



Cricket Ball



Hotspur



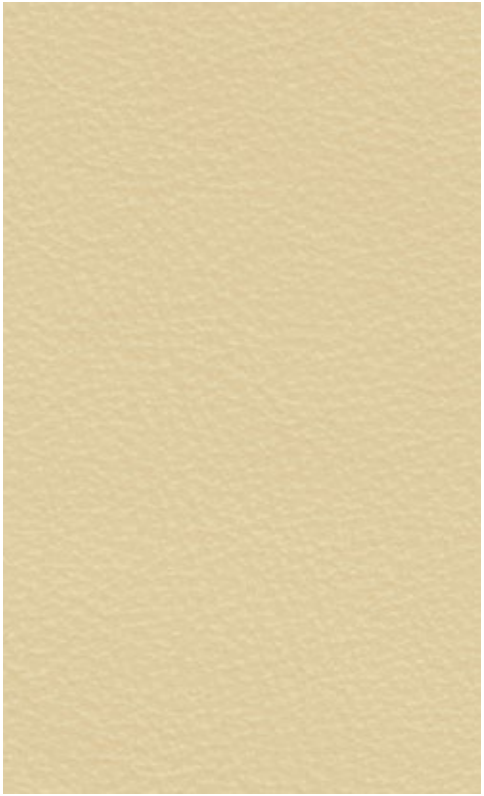
Saddle



Newmarket Tan



Camel



Magnolia



Linen



Portland



Porpoise



Brunel



Beluga



Cumbrian Green



Imperial Blue

Mulliner Colour Specification accent colours*



Pillar Box Red



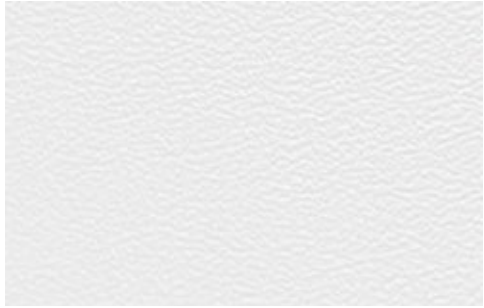
Mandarin



Magenta



Cherry Blossom



White



Cyber Yellow



Light Blue



Kingfisher

*Available only as part of the Mulliner Colour Specification and as accent colour only. Please refer to Specifications and Options pages 59-69 for standard and optional hides. Not all options are available on all models and within all markets. Please note, the colours reproduced are for representation purposes only and therefore vary slightly from the actual vehicle.



Roof options.

The Continental GTC can be commissioned with seven different roof colours, and eight interior roof linings. This is yet another stunning demonstration of Bentley's meticulous attention to design, allowing you to coordinate your vehicle's look right down to the very last detail.

And for the ultimate in luxury, the roof of the Continental GTC Mulliner features tactile hand-stitched tonneau cover quilting, in Bentley's distinctive Precision Diamond Quilt design.

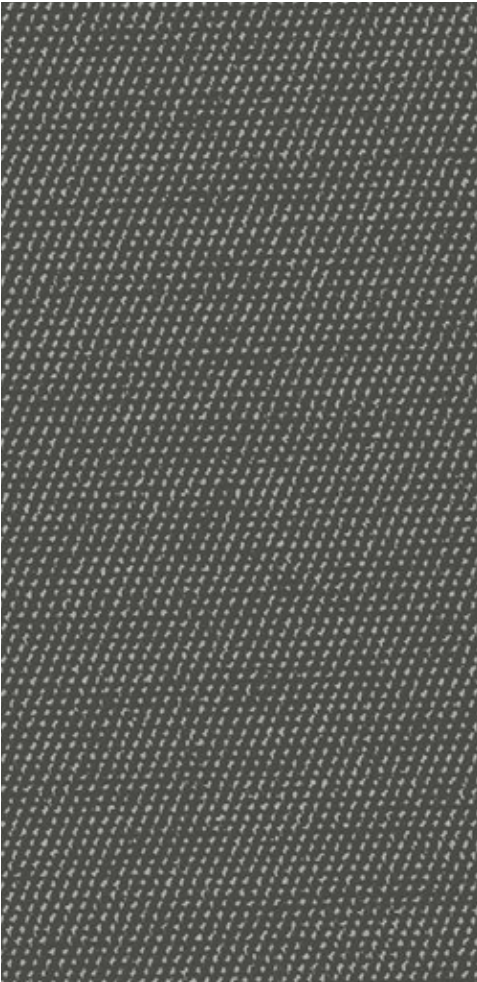
Roof exterior



Black



Blue



Grey



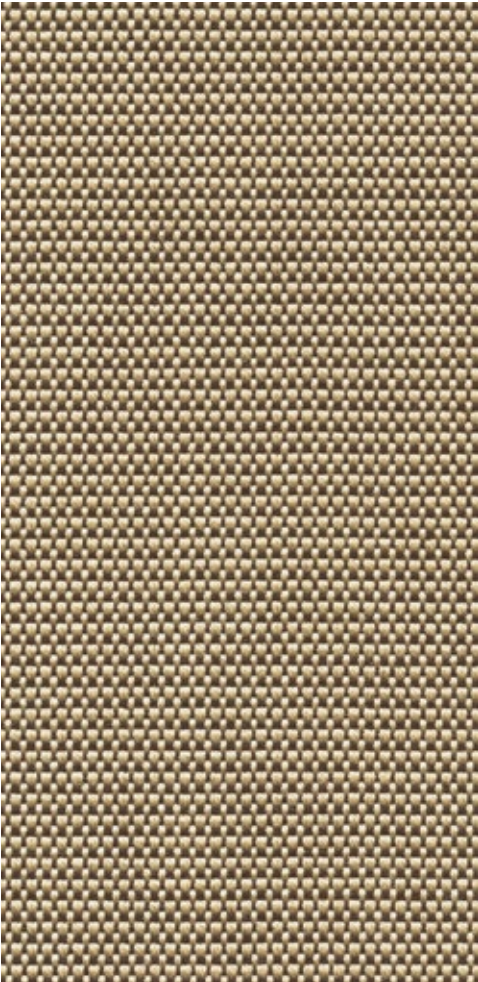
Dark Brown



Dark Grey Metallic



Claret



Tweed

Roof interior



Magnolia



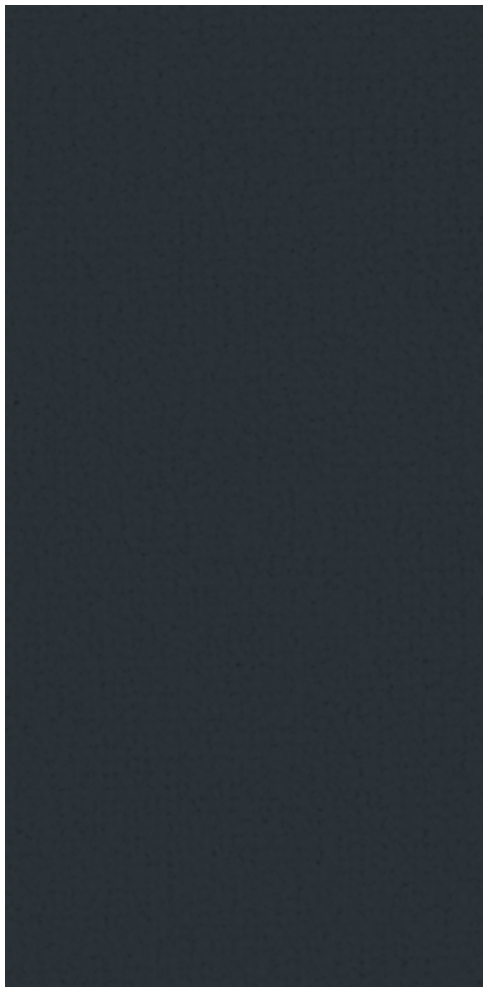
Camel



Light Grey



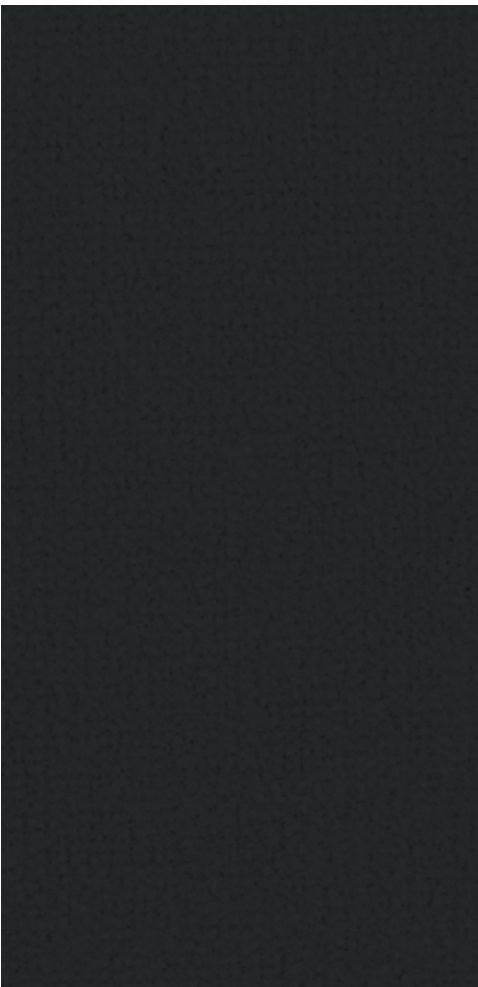
Grey



Blue



Saddle



Beluga



Red

Specification Packages.

To make it even easier to specify your perfect Continental GTC, Bentley’s engineers and designers have created groups of features, from technology packages that make driving easier to collections of exquisitely crafted styling enhancements.

CITY SPECIFICATION*

Digital assistance features for easier urban driving.

- Top View Camera
- Traffic Sign Recognition**
- City Assist
- Pedestrian Warning
- Reversing Traffic Warning
- Automatic dimming door mirrors
- Hands-free boot opening

LEATHER SPECIFICATION

Hide replaces Dinamica throughout.

- Seats
- Fascias
- Doors
- Rear quarter panels
- Steering wheel

COLOUR SPECIFICATION

Opens up a range of additional interior options for the Continental GTC.

- 10 additional hide choices
- Four additional colour combinations
- Three additional interior roof colours

MULLINER COLOUR SPECIFICATION

- Eight new colours available for all stitching, piping and accent options

TOURING SPECIFICATION

Digital assistance features for effortless cruising.

- Active Lane Assist
- Adaptive Cruise Control with Traffic Jam Assist**
- Bentley Safeguard Plus
- Night Vision
- Head-Up Display**

BLACKLINE SPECIFICATION

Replaces the exterior brightware with a gloss black trim.

- Black door handles
- Black gloss radiator matrix grille with black surround
- Black wing vents and lower side sills
- Black rear bumper strike and number plate embellishers
- Black headlamp and tail lamp embellishers
- Black side window surrounds
- Black tailpipes

MULLINER BLACKLINE SPECIFICATION

Gives the exterior black look to the Mulliner derivative.

- 22" Mulliner wheel in full black, or black and bright polished
- Side window surrounds in black
- Wing vent and lower brightware in black
- Beluga mirror cap tops
- Rear brightware in black
- Headlamp and radiator bezels in black

FRONT SEAT COMFORT SPECIFICATION

The ultimate in Bentley comfort for the driver and front seat passenger.

- Seat ventilation
- Multi-mode massage
- Adjustable cushion length
- Adjustable side bolsters
- Electric headrests
- Hide-trimmed seat belt buckles
- Heated armrests
- Neck warmer

DIAMOND KNURLING SPECIFICATION

An intricate metal treatment applied to additional elements of the fascia and console.

- Knurled bulls-eye air vents
- Knurled dashboard clock bezel
- Knurled organ stops

MOOD LIGHTING SPECIFICATION

- Multi coloured mood lighting
- Seven different colours in two different palettes, vibrant or muted
- Matching illuminated ‘BENTLEY’ treadplates

STYLING SPECIFICATION – CARBON

- Front splitter
- Rear diffuser
- Branded side sills
- Rear lip spoiler
- All in mirror-matched weave, high-gloss carbon fibre

SMOKER’S SPECIFICATION

- Solid metal ash can in front cabin
- Cigar lighters in front and rear

*Included with all Continental GTC models

**Regional applicability.

Please refer to Specifications and Options pages 59-69 for standard and optional features.
Not all options are available on all models and within all markets.

Your choice.

Commissioning a Continental GTC involves an exciting journey through the options available. Bentley Retailers can offer advice and guidance across a wide range of choices including your exterior paint, veneer, hides and stitching.

If you already know what you're looking for, or you simply want to experiment in your own time, the **Bentley Configurator** enables you to experiment with the different options. Once you've created your car, your configuration can be saved and emailed to your Retailer.

Acquiring your car on finance.

Bentley finance agreements are tailored to ensure you make the most of your investment.

While other financiers look only at the circumstances of the customer, Bentley Financial Services creates bespoke packages, based not just on your needs and income, but also on the car you have in mind.

To discover more, please visit your local Bentley Retailer or visit **BentleyMotors.com**

Something to appreciate.

As is the case with every Bentley, there is only one way to truly appreciate this car – to sit in the driving seat, to take the wheel in your hands and feel the breathtaking surge of acceleration as you put your foot down.

To take the next step on the journey of acquiring a Continental GTC, we recommend a conversation with a Bentley Retailer. You can find your nearest showroom at **BentleyMotors.com**



WORLD OF BENTLEY





The Bentley Collection.

The Bentley Collection is a selection of lifestyle products inspired by the distinctive design of our cars. With many items lovingly crafted by highly skilled artisans, the Bentley Collection takes our exciting heritage and vision for the future, and seamlessly weaves it into extraordinary statement pieces.

From unique pieces for the home that elevate your everyday, to lovingly crafted clothing and accessories designed with a distinctive eye for detail, you can bring Bentley's unrivalled refinement to every aspect of your life.

To view the complete range, please contact your local Bentley Retailer or visit the online store at **[BentleyCollection.com](https://www.bentleycollection.com)**

The Bentley Experience.

These unique tours offer unrivalled opportunities to explore behind the scenes at the Home of Bentley in Crewe and visit the flagship showroom, CW1 House.

Available as an onsite, real-world experience or virtual tour, our experienced, knowledgeable hosts will share rare insights into the design and engineering process. You will meet the craftspeople who build your car and witness the skill and detail that goes into creating a personalised Bentley. You'll also discover the innovations and techniques they're using to craft a sustainable vision of the future.

The Bentley Experience offers a truly tailored journey, with exclusive access to the historic factory, and your questions answered as you go – by experts who share your passion for Bentley. You can even collaborate with them to commission your own highly personalised car.

Extraordinary Journeys.

We run a number of events each year for Bentley drivers and admirers, such as Extraordinary Journeys. These occasions offer the experience of seeing Bentley craftsmanship up close, while also offering a great deal more in the way of discovery. Participants experience aspects of Bentley beyond the car – a love of beautiful locations, a focus on wellbeing, an exploration of sustainability, and the chance to meet inspiring people who are reshaping the world.

In the UK, for example, Bentley enthusiasts have the opportunity to tour the Home of Bentley in Crewe before setting off on a journey that includes sustainable fine dining, some of the country's most notable landscapes and landmarks, and hospitality at a range of forward-thinking establishments.

To discover more, please talk to your local Bentley Retailer or visit **BentleyMotors.com**





SPECIFICATIONS & OPTIONS

Continental GTC

STANDARD SPECIFICATION

BRAKES

- Front vented 420 x 40 mm disc brakes with Bentley branded black 10 piston brake callipers
- Rear vented 380 x 30 mm disc brakes with black 4 piston brake callipers
- Brake pad wear indicator

WHEELS

- 21" 5 tri-spoke alloy wheel – painted
- Electronic Tyre Pressure Monitoring System (TPMS)

STEERING

- Speed-sensitive electronic power steering

SUSPENSION

- Torque vectoring by brake
- Three chamber air suspension with Continuous Damping Control (CDC)
- Electronic Stability Programme (ESP) with Traction Control(TCS)/Anti-lock Braking System (ABS)/Electronic Brake Force Distribution (EBD)/Hydraulic Brake Assist (HBA)/ Drag Torque Control (MSR)
- Dynamic ride-height control (auto-adjusts at speed) and ground clearance function
- Drive Dynamics Control

EXTERIOR

- Choice of seven standard paint colours: Beluga (solid), Dark Sapphire, Glacier White (solid), Moonbeam, Onyx, St. James’ Red (solid), Thunder
- Automatically folding four layer insulated fabric roof in three colours: Black, Blue, Grey
- Black gloss matrix grille with chrome surround
- Black (matt) lower bumper grille
- Bright wing vent with black ribbed matrix
- Polished brightware to side windows

- Power latches to the doors and boot
- Electrically adjustable door mirrors with heating, power fold, memory and dip on reverse functions
- Black/chrome bonnet and boot Bentley wing badges
- ‘BENTLEY’ lettering on the boot
- Exterior treadplate with ‘BENTLEY’ lettering
- Full LED matrix headlamps* with high-beam assist
- Full LED supplementary lamps and tail lamps
- Body coloured door mirrors
- Front and rear Park Distance Control
- Acoustic, heat-insulating, front screen
- Acoustic side glass
- Heated rear screen
- Quad oval exhaust finishers
- Rain-sensing windscreen wipers
- Battery charger socket
- Hands free boot

INTERIOR

- Five interior roof colours: Beluga, Blue, Grey, Red, Saddle
- Four occupant seating positions
- Seats with straight-fluted style hide
- Nappa leather interior on seats and lower cabin – five available colours
- One monotone colourway
- Electric 12-way front seats, heated with two memory functions
- Single front armrest (with fore/aft slide) – with wireless mobile phone charger, 12 V socket and two USB-C charging points
- Two rear seats with centre stowage inc. 12 V socket and one USB-C charging point
- 12 V socket in boot
- Crown Cut Walnut veneer
- Heated, single tone, 3-spoke, hide-trimmed steering wheel

- Metal bulls-eye vents with organ stops
- Bentley analogue clock with plain bezel
- Black seat belt buckles
- Bright boot finisher
- Deep pile carpets – matched to main or secondary hide
- Boot carpet in Beluga
- Auto-dimming rear-view mirror
- Two cup holders to rear console
- Electric tilt-and-reach adjustment steering column with memory and easy-entry functions
- Multi-zone automatic climate control
- Air ioniser
- Two cup holders to the centre console
- Lockable, cooled glove box
- Stowage to front doors, centre console and under centre armrest
- Sun visors with illuminated vanity mirrors
- Footwell illumination and ambient lighting
- Boot lid down lighters
- Standard foot pedals
- Leather-trimmed gear lever
- Steering wheel mounted gearshift paddles
- Keybox

TECHNOLOGY

- Infotainment system with 12.3" high-resolution capacitive touchscreen display. Proximity sensors and hard key controls. Digital radio, HDD-Navigation, advanced music interface (AMI), single DVD/CD slot, two SD card slots, Bluetooth (A2DP) and Wi-Fi (uPnP) streaming
- Navigation – featuring text-to-speak, voice destination entry and 3D building display
- Apple CarPlay®*
- 60GB solid-state drive (10GB available user space)
- Hidden antennae

- 4G LTE telephone module*
- POI (search)*
- Online real time traffic information*
- Bentley Signature Audio
- Bluetooth and Wi-Fi audio streaming
- Pre-sense braking system (Bentley Safeguard)*
- Adaptive brake lights*
- Keyless entry and ignition
- Exit Warning
- Blind Spot Warning
- Park Assist
- Engine stop/start button
- Alarm and immobiliser
- Cruise control
- Reversing camera with graphic screen representation
- Driver and passenger airbags
- Side airbags
- Collision Prevention Assist*
- Pre-crash, rear*
- Multi-collision brake*
- Welcome lighting
- Inductive phone charger
- Bentley GPS tracking system*

SPECIFICATION PACKAGES

- City Specification

See the full details of this specification on page 53.

SPECIFICATIONS & OPTIONS

NCO = No Cost Option. *Regional applicability. Please contact your local Retailer for availability.

Continental GTC (cont.)

OPTIONAL SPECIFICATION

SUSPENSION

- Bentley Dynamic Ride

BRAKES

- Bentley branded (front) brake callipers in red
- Ceramic brakes with black callipers
- Ceramic brakes with red callipers

WHEELS

- 21" 5 tri-spoke alloy wheel – grey painted and bright machined
- 22" 5 open-spoke alloy wheel – polished
- 22" 5 open-spoke alloy wheel – black with polished edge
- Self-levelling wheel badges by Mulliner**
- Winter wheels and tyres
- 21" summer tyres* (NCO)
- 21" all-season tyres*
- Temporary use spare wheel for home*

EXTERIOR

- Additional exterior paint colours
- Choice of four additional exterior roof colours: Dark Brown, Claret, Dark Grey Metallic and Tweed
- Jewel fuel filler and oil caps

INTERIOR

- Choice of additional veneers: Burr Walnut by Mulliner, Dark Stained Burr Walnut, Dark Fiddleback Eucalyptus, Liquid Amber, open pore Crown Cut Walnut, open pore Dark Burr Walnut, open pore Koa, Piano Black, Piano Linen by Mulliner
- Unique centre console finish in ‘Côtes de Genève’

- Choice of dual veneers by Mulliner applied to the upper fascia, with Grand Black veneer on the lower fascia and centre console
- Carbon fibre to fascia and door waistrails with Piano Black to centre console
- Additional interior roof colours: Camel, Light Grey and Magnolia as part of the Colour Specification
- Wind deflector
- Embroidered Bentley emblems to headrests
- Sports foot pedals
- Semi-aniline leather to seats and door inserts
- Contrast stitching and piping
- Hand cross stitching by Mulliner
- Chrome pinstripe to fascia and door decoration panels
- Heated, single-tone, 3-spoke indented hide-trimmed steering wheel
- Heated, duo-tone, 3-spoke, hide-trimmed steering wheel
- Heated, duo-tone, 3-spoke indented hide-trimmed steering wheel
- Contrast steering wheel spokes and gear lever by Mulliner
- Contrast seatbelts by Mulliner
- 10 hide choices†
- Four additional duo-tone colour combinations†
- Deep pile overmats to front

CONVENIENCE

- Heated windscreen*
- Battery charger*
- Parking heater††
- Remote controlled garage door opener*
- Valet key
- First aid kit and warning triangle
- Tool kit and jack*

TECHNOLOGY

- Adaptive Cruise Control*
- Bentley Rotating Display
- Head-Up Display*
- Naim for Bentley premium audio system
- Bang & Olufsen for Bentley audio system
- LED Welcome lights
- Digital TV tuner*

SPECIFICATION PACKAGES

- Blackline Specification
- Colour Specification
- Diamond Knurling Specification
- Front Seat Comfort Specification
- Mood Lighting Specification
- Mulliner Colour Specification
- Touring Specification*
- Smoker’s Specification
- Styling Specification – Carbon

See the full details of these specifications on page 53.

NCO = No Cost Option. *Regional applicability.

**Not available with 21" 10 spoke wheels

†Part of the Colour Specification.

††Not available with V8 engine in certain markets.

Please contact your local Retailer for availability.

Continental GTC Azure

STANDARD SPECIFICATION

BRAKES

- Front vented 420 x 40 mm disc brakes with Bentley branded black 10 piston brake callipers
- Rear vented 380 x 30 mm disc brakes with black 4 piston brake callipers
- Brake pad wear indicator

WHEELS

- 22" 10 spoke alloy wheel - black painted and bright machined
- Electronic Tyre Pressure Monitoring System (TPMS)
- 22" Summer or All Seasons tyre*

STEERING

- Speed-sensitive electronic power steering

SUSPENSION

- Torque vectoring by brake
- Bentley Dynamic Ride
- Three chamber air suspension with Continuous Damping Control (CDC)
- Electronic Stability Programme (ESP) with Traction Control(TCS)/Anti-lock Braking System (ABS)/Electronic Brake Force Distribution (EBD)/Hydraulic Brake Assist (HBA)/ Drag Torque Control (MSR)
- Dynamic ride-height control (auto-adjusts at speed) and ground clearance function
- Drive Dynamics Control

EXTERIOR

- Choice of 16 exterior paint colours
- Automatically folding four layer insulated fabric roof in three colours: Black, Blue, Grey
- Bright wing vent with black ribbed matrix
- Black Gloss matrix grille with chrome surround and vertical vanes

- Bright chromed matrix style grille to lower bumper apertures
- ‘Azure’ exterior fender badges
- Body coloured door mirrors
- Jewel fuel filler and oil caps
- Polished brightware to side windows
- Power latches to the doors and boot
- Electrically adjustable door mirrors with heating, power fold, memory and dip on reverse functions
- Black/chrome bonnet and boot ‘Bentley’ wing badges
- ‘BENTLEY’ lettering on the boot
- Exterior illuminated treadplates with ‘BENTLEY’ lettering
- Full LED matrix headlamps* with high-beam assist
- Full LED supplementary lamps and tail lamps
- Front and rear Park Distance Control
- Acoustic, heat-insulating, front screen
- Acoustic side glass
- Heated rear screen
- Quad oval exhaust finishers
- Rain-sensing windscreen wipers
- Battery charger socket

INTERIOR

- Five interior roof colours: Beluga, Blue, Grey, Red, Saddle
- Four occupant seating positions
- ‘Azure’ seat emblems
- ‘Azure’ fascia badge
- Organic Comfort Quilt to seats, door casings and rear quarter panels
- Nappa leather interior on seats and lower cabin
- Choice of monotone or four duotone colour combinations in 15 hide colours
- ‘Azure’ treadplates
- Heated, single tone, 3-spoke, hide-trimmed steering wheel
- Contrast stitching
- Sports foot pedals

- Front seats – electric 24-way adjustment with heating, ventilation, massage, adjustable bolster function and two memory positions
- Single front armrest (with fore/aft slide) – with wireless mobile phone charger, 12 V socket and two USB-C charging points
- Two rear seats with centre stowage inc. 12 V socket and one USB-C charging point
- 12 V socket in boot
- Open pore Crown Cut Walnut veneer
- Metal bulls-eye vents with organ stops
- Bentley analogue clock with plain bezel
- Black seat belt buckles
- Bright boot finisher
- Deep pile carpets – matched to main or secondary hide
- Deep pile overmats to front
- Boot carpet in Beluga
- Auto-dimming rear-view mirror
- Two cup holders to rear console
- Electric tilt-and-reach adjustment steering column with memory and easy-entry functions
- Multi-zone automatic climate control
- Air ioniser
- Two cup holders to the centre console
- Lockable, cooled glove box
- Stowage to front doors, centre console and under centre armrest
- Sun visors with illuminated vanity mirrors
- Footwell illumination and ambient lighting
- Boot lid down lighters
- Leather-trimmed gear lever
- Steering wheel mounted gearshift paddles
- Keybox

TECHNOLOGY

- Infotainment system with 12.3" high-resolution capacitive touchscreen display. Proximity sensors and hard key controls. Digital radio, HDD-Navigation, advanced music interface (AMI), single DVD/CD slot, two SD card slots, Bluetooth (A2DP) and Wi-Fi (uPnP) streaming
- Navigation – featuring text-to-speak, voice destination entry and 3D building display
- Head-Up Display*
- Apple CarPlay®*
- 60GB solid-state drive (10GB available user space)
- Hidden antennae
- 4G LTE telephone module*
- POI (search)*
- Online real time traffic information*
- Bentley Signature Audio
- Bluetooth and Wi-Fi audio streaming
- Pre-sense braking system (Bentley Safeguard)*
- Adaptive brake lights*
- Keyless entry and ignition
- Exit Warning
- Blind Spot Warning
- Park Assist
- Engine stop/start button
- Alarm and immobiliser
- Reversing camera with graphic screen representation
- Driver and passenger airbags
- Side airbags
- Collision Prevention Assist*
- Pre-crash, rear*
- Multi-collision brake*
- Welcome lighting
- Inductive phone charger
- Bentley GPS tracking system*

SPECIFICATIONS & OPTIONS

NCO = No Cost Option. *Regional applicability. Please contact your local Retailer for availability.

Continental GTC Azure (cont.)

SPECIFICATION PACKAGES

- City Specification
- Colour Specification
- Front Seat Comfort Specification
- Mood Lighting Specification
- Touring Specification*

See the full details of these specifications on page 53.

OPTIONAL SPECIFICATION

WHEELS

- 21" 5 tri-spoke alloy wheel – painted (NCO)
- 21" 5 tri-spoke alloy wheel – grey painted and bright machined (NCO)
- 21" 10-spoke alloy wheel – grey painted and bright machined (NCO)
- 21" 10-spoke alloy wheel – polished (NCO)
- 22" 10 spoke alloy wheel - silver painted and bright machined
- 22" 10 spoke alloy wheel - black painted
- Self-levelling wheel badges by Mulliner**
- Winter wheels and tyres
- Summer tyres*
- All-season tyres*
- Temporary use spare wheel for home*

EXTERIOR

- Additional exterior paint colours
- Choice of four additional exterior roof colours: Dark Brown, Claret, Dark Grey Metallic and Tweed
- Black (matt) lower bumper grille
- Black gloss matrix grille with black gloss surround and vertical vanes
- Bentley branded (front) brake callipers in red
- Ceramic brakes with black callipers
- Ceramic brakes with red callipers

INTERIOR

- Choice of additional veneers: Burr Walnut by Mulliner, Crown Cut Walnut (NCO), Dark Stained Burr Walnut, Dark Fiddleback Eucalyptus, Liquid Amber, open pore Dark Burr Walnut (NCO), open pore Koa (NCO), Piano Black, Piano Linen by Mulliner
- Unique centre console finish in ‘Côtes de Genève’
- Choice of dual veneers by Mulliner applied to the upper fascia, with Grand Black veneer on the lower fascia and centre console
- Carbon fibre to fascia and door waistrails with Piano Black to centre console
- Additional interior roof colours: Camel, Light Grey and Magnolia
- Wind deflector
- Embroidered ‘Bentley’ emblems to headrests (NCO)
- Semi-aniline leather to seats and door inserts
- Contrast stitching and piping
- Hand cross stitching by Mulliner
- Chrome pinstripe to fascia and door decoration panels
- Heated, duo-tone, 3-spoke, hide-trimmed steering wheel (NCO)
- Heated, single-tone, 3-spoke indented hide-trimmed steering wheel
- Heated, duo-tone, 3-spoke indented hide-trimmed steering wheel
- Contrast steering wheel spokes and gear lever by Mulliner
- Contrast seatbelts by Mulliner

CONVENIENCE

- Heated windscreen*
- Battery charger*
- Parking heater††
- Remote controlled garage door opener*
- Valet key
- First aid kit and warning triangle
- Tool kit and jack*

TECHNOLOGY

- Adaptive Cruise Control*
- Bentley Rotating Display
- Naim for Bentley premium audio system
- Bang & Olufsen for Bentley audio system
- LED welcome lights
- Digital TV tuner*

SPECIFICATION PACKAGES

- Blackline Specification
- Diamond Knurling Specification
- Mulliner Colour Specification
- Styling Specification – Carbon
- Smoker’s Specification

See the full details of these specifications on page 53.

NCO = No Cost Option. *Regional applicability.

**Not available with 21" 10 spoke wheels

†Part of the Colour Specification.

††Not available with V8 engine in certain markets.

Please contact your local Retailer for availability.

Continental GTC S

STANDARD SPECIFICATION

BRAKES

- Front vented 420 x 40 mm disc brakes with Bentley branded red 10 piston brake callipers
- Rear vented 380 x 30 mm disc brakes with red 4 piston brake callipers
- Brake pad wear indicator

WHEELS

- 21" 5 tri-spoke alloy wheel – black painted and bright machined
- Electronic Tyre Pressure Monitoring System (TPMS)

STEERING

- Speed-sensitive electronic power steering

SUSPENSION

- Torque vectoring by brake
- Three chamber air suspension with Continuous Damping Control (CDC)
- Electronic Stability Programme (ESP) with Traction Control (TCS)/Anti-lock Braking System (ABS)/Electronic Brake Force Distribution (EBD)/Hydraulic Brake Assist (HBA)/Drag Torque Control (MSR)
- Dynamic ride-height control (auto-adjusts at speed) and ground clearance function
- Bentley Dynamic Ride
- Drive Dynamics Control
- Launch Control

EXTERIOR

- Choice of seven standard paint colours: Beluga (solid), Dark Sapphire, Glacier White (solid), Moonbeam, Onyx, St. James’ Red (solid), Thunder
- Automatically folding four layer insulated fabric roof in three colours: Black, Blue, Grey
- Black gloss radiator matrix grille with black surround

- Black (matt) lower bumper grille
- Dark tint front and rear lights
- Black headlamp and tail lamp embellishers
- Black wing vents and lower side sills
- ‘S’ fender badge
- Black side window surrounds
- Black door handles
- Power latches to the doors and boot
- Electrically adjustable door mirrors with heating, power fold, memory and dip on reverse functions
- Black door mirrors
- Black/chrome bonnet and boot Bentley wing badges
- ‘S’ sport sills
- Black tailpipes
- Sports exhaust
- Black quad oval exhaust finishers
- Black rear bumper strike and number plate embellishers
- ‘BENTLEY’ lettering on the boot
- Full LED matrix headlamps* with high-beam assist
- Full LED supplementary lamps and tail lamps
- Front and rear Park Distance Control
- Acoustic, heat-insulating, front screen
- Acoustic side glass
- Heated rear screen
- Rain-sensing windscreen wipers
- Battery charger socket
- Keybox

INTERIOR

- Eight interior roof colours: Beluga, Blue, Camel, Grey, Light Grey, Magnolia, Red, Saddle
- Four occupant seating positions
- ‘S’ unique colour combination
- ‘S’ unique mix of Nappa leather and Dinamica to seats and lower cabin

- Exterior illuminated treadplates with ‘BENTLEY’ lettering
- ‘S’ treadplates
- Fluted seat ‘S’ design
- Dinamica gear lever
- Single tone, three-spoke, hide and Dinamica trimmed heated steering wheel
- Steering wheel mounted gearshift paddles
- Nappa leather interior on seats and lower cabin – 5 colours
- Electric 12-way front seats, heated with two memory functions
- ‘S’ embroidered headrests
- ‘S’ fascia badge
- Single front armrest (with fore/aft slide) – with stowage inc. 12 V socket and two USB-C charging points
- Two rear seats with centre stowage inc. 12 V socket and two USB-C charging points
- 12 V socket in boot
- Piano Black veneer
- Metal bulls-eye vents with organ stops
- Bentley analogue clock with plain bezel
- Black seat belt buckles
- Bright boot finisher
- Deep pile carpets – matched to main or secondary hide
- Standard carpet overmats to the front
- Boot carpet in Beluga
- Auto-dimming rear-view mirror
- Two cup holders to rear console
- Electric tilt-and-reach adjustment steering column with memory and easy-entry functions
- Multi-zone automatic climate control
- Two cup holders to the centre console
- Lockable glove box
- Stowage to front doors, centre console and under centre armrest

- Sun visors with illuminated vanity mirrors
- Footwell illumination and ambient lighting
- Boot lid down lighters
- Air ioniser

TECHNOLOGY

- Infotainment system with 12.3" high-resolution capacitive touchscreen display. Proximity sensors and hard key controls. Digital radio, HDD-Navigation, advance music interface (AMI), single DVD/CD slot, two SD card slots, Bluetooth (A2DP) and Wi-Fi (uPnP) streaming
- Navigation – featuring text-to-speak, voice destination entry and 3D building display
- Apple CarPlay®*
- 60 GB solid-state drive (10 GB available user space)
- Hidden antennae
- 4G LTE telephone module*
- POI (search)*
- Online real time traffic information*
- Bentley Signature Audio
- Bluetooth and Wi-Fi audio streaming
- Pre-sense braking system (Bentley Safeguard)*
- Adaptive brake lights*
- Keyless entry and ignition
- Exit Warning
- Blind Spot Warning
- Park Assist
- Engine stop/start button
- Alarm and immobiliser
- Cruise control
- Reversing camera with graphic screen representation
- Driver and passenger airbags
- Side airbags
- Collision Prevention Assist*
- Pre-crash, rear*

SPECIFICATIONS & OPTIONS

NCO = No Cost Option. *Regional applicability. Please contact your local Retailer for availability.

Continental GTC S (cont.)

TECHNOLOGY (CONT.)

- Multi-collision brake*
- Welcome lighting
- Inductive phone charger
- Bentley GPS tracking system*

SPECIFICATION PACKAGES

- City Specification
- Blackline Specification

See the full details of these specifications on page 53.

OPTIONAL SPECIFICATION

WHEELS

- 22" Sports alloy wheel – black painted
- 22" Sports alloy wheel – Pale Brodgar Satin
- Self levelling wheel badges by Mulliner
- Winter wheels and tyres
- Summer tyres*
- All season tyres*
- Temporary use spare wheel for home*

BRAKES

- Front vented 420 x 40 mm disc brakes with Bentley branded black 10 piston brake callipers
- Rear vented 380 x 30 mm disc brakes with 4 black piston brake callipers
- Ceramic brakes with black callipers
- Ceramic brakes with red callipers

EXTERIOR

- Choice of four additional exterior roof colours: Dark Brown, Claret, Dark Grey Metallic and Tweed
- Additional exterior paint colours
- Body coloured door mirrors
- Acoustic, heat-insulating, front screen
- Jewel fuel filler and oil cap

INTERIOR

- Choice of additional veneers: Burr Walnut by Mulliner, Crown Cut Walnut (NCO), Dark Fiddleback Eucalyptus (NCO), Dark Stained Burr Walnut, Liquid Amber, Piano Linen by Mulliner, open pore Crown Cut Walnut, open pore Dark Burr Walnut, open pore Koa
- Unique centre console finish in ‘Côtes de Genève’
- Choice of dual veneers by Mulliner applied to the upper fascia, with Grand Black veneer on the lower fascia and centre console

- Carbon fibre to fascia and door waistrails
- Engine turned aluminium – dark tint to centre console
- Front seats – electric 24-way adjustable with heating, ventilation, massage, adjustable bolster function and 2 memory functions
- Precision Diamond Quilt to seats, door casings and rear quarter panels
- Deep pile overmats to front
- Contrast binding to deep pile carpet overmats (front)
- Embroidered Bentley emblems to headrests (NCO)
- Leather pillars and indented hide headliner
- Semi-aniline leather to seats and door inserts
- Contrast stitching
- Contrast stitching and piping
- Hand cross stitching by Mulliner
- One monotone and four duo-tone combinations
- Chrome pinstripe to fascia and door decoration panels
- Heated, duo-tone, 3-spoke, hide-trimmed steering wheel
- Heated, duo-tone, 3-spoke indented hide-trimmed steering wheel
- Heated, single tone, 3-spoke, hide-trimmed steering wheel
- Heated, single-tone, 3-spoke indented hide-trimmed steering wheel
- Hide gear lever
- Sports foot pedals
- Contrast seatbelts by Mulliner
- Contrast steering wheel spokes and gear lever by Mulliner
- Neck warmer
- Wind deflector

CONVENIENCE

- Battery charger*
- Parking heater**
- Remote controlled garage door opener*
- Valet key
- First aid kit and warning triangle
- Tool kit and jack*
- Heated windscreen*

TECHNOLOGY

- Adaptive Cruise Control*
- Bentley Rotating Display
- Head-Up Display*
- Naim for Bentley premium audio system
- Bang & Olufsen for Bentley audio system
- LED welcome lights
- Digital TV tuner*

SPECIFICATIONS

- Colour Specification
- S Colour Specification
- Touring Specification*
- Mulliner Colour Specification
- Front Seat Comfort Specification
- Mood Lighting Specification
- Diamond Knurling Specification
- Smoker’s Specification
- Styling Specification – Carbon

See the full details of these specifications on page 53.

NCO = No Cost Option. *Regional applicability.
**Not available with V8 engine in certain markets.
Please contact your local Retailer for availability.

Continental GTC Speed

STANDARD SPECIFICATION

BRAKES

- Front vented 420 x 40 mm disc brakes with Bentley branded red 10 piston brake callipers
- Rear vented 380 x 30 mm disc brakes with red 4 piston brake callipers
- Brake pad wear indicator

WHEELS

- 22" Speed alloy wheel – silver painted
- Electronic Tyre Pressure Monitoring System (TPMS)
- 22" summer tyre with Pirelli Noise Cancellation System

STEERING

- Electronic All-Wheel Steering

SUSPENSION

- Three chamber air suspension with Continuous Damping Control (CDC)
- Electronic Stability Programme (ESP) with Traction Control (TCS)/Anti-lock Braking System (ABS)/Electronic Brake Force Distribution (EBD)/Hydraulic Brake Assist (HBA)/Drag Torque Control (MSR)
- Torque vectoring by electronic differential (eLSD)
- Dynamic ride-height control (auto-adjusts at speed) and ground clearance function
- Bentley Dynamic Ride System with Electronic All-Wheel Steering
- Drive Dynamics Control
- Launch Control

EXTERIOR

- Choice of 16 exterior paint colours
- Automatically folding four layer insulated fabric roof in three colours: Black, Blue, Grey
- Dark tint wing vent with ‘12’ in the black ribbed matrix

- Dark tint radiator matrix
- Lower front bumper grilles in dark tint
- ‘Speed’ fender badge
- Dark tint brightware to side windows
- Power latches to the doors and boot
- Electrically adjustable door mirrors with heating, power fold, memory and dip on reverse functions
- Body coloured door mirrors
- Black/chrome bonnet and boot Bentley wing badges
- Illuminated ‘Bentley’ sill and ‘Speed’ treadplates
- Speed sport sills
- ‘BENTLEY’ lettering on the boot
- Jewel fuel filler and oil cap
- Full LED matrix headlamps* with high-beam assist
- Full LED supplementary lamps and tail lamps
- Dark tint front and rear lights
- Front and rear Park Distance Control
- Acoustic, heat-insulating, front screen
- Acoustic side glass
- Heated rear screen
- Sports Exhaust (W12)
- Twin large oval exhaust finishers
- Rain-sensing windscreen wipers
- Battery charger socket
- Keybox

INTERIOR

- Eight interior roof colours: Beluga, Blue, Camel, Grey, Light Grey, Magnolia, Red, Saddle
- Four occupant seating positions
- Single tone, three-spoke, hide and Dinamica trimmed heated steering wheel
- Precision Diamond Quilt to seats, door casings and rear quarter panels
- Unique ‘Speed’ mix of Nappa leather and Dinamica to seats and lower cabin

- Electric 12-way front seats, heated with two memory functions
- Speed embroidered headrests
- Speed fascia badge
- Single front armrest (with fore/aft slide) – with wireless mobile phone charger, 12 V socket and two USB-C charging points
- Two rear seats with centre stowage inc. 12 V socket and one USB-C charging point
- 12 V socket in boot
- Piano Black veneer
- Metal bulls-eye vents with organ stops
- Bentley analogue clock with plain bezel
- Black seat belt buckles
- Bright boot finisher
- Deep pile carpets – matched to main or secondary hide
- Standard carpet overmats to the front
- Boot carpet in Beluga
- Auto-dimming rear-view mirror
- Two cup holders to rear console
- Electric tilt-and-reach adjustment steering column with memory and easy-entry functions
- Multi-zone automatic climate control
- Air ioniser
- Two cup holders to the centre console
- Lockable, cooled glove box
- Stowage to front doors, centre console and under centre armrest
- Sun visors with illuminated vanity mirrors
- Footwell illumination and ambient lighting
- Boot lid down lighters
- Sports foot pedals
- Dinamica gear lever
- Steering wheel mounted gearshift paddles

TECHNOLOGY

- Infotainment system with 12.3" high-resolution capacitive touchscreen display. Proximity sensors and hard key controls. Digital radio, HDD-Navigation, advanced music interface (AMI), single DVD/CD slot, two SD card slots
- Bluetooth (A2DP) and Wi-Fi (uPnP) streaming
- Navigation – featuring text-to-speak, voice destination entry and 3D building display
- Apple CarPlay®*
- 60 GB solid-state drive (10 GB available user space)
- Hidden antennae
- 4G LTE telephone module*
- POI (search)*
- Online real time traffic information*
- Bentley Signature Audio
- Bluetooth and Wi-Fi audio streaming
- Pre-sense braking system (Bentley Safeguard)*
- Adaptive brake lights*
- Keyless entry and ignition
- Exit Warning
- Blind Spot Warning
- Park Assist
- Engine stop/start button
- Alarm and immobiliser
- Cruise control
- Reversing camera with graphic screen representation
- Driver and passenger airbags
- Side airbags
- Collision Prevention Assist*
- Pre-crash, rear*
- Multi-collision brake*
- Welcome lighting
- Inductive phone charger
- Bentley GPS tracking system*

SPECIFICATIONS & OPTIONS

NCO = No Cost Option. *Regional applicability. Please contact your local Retailer for availability.

Continental GTC Speed (cont.)

SPECIFICATION PACKAGES

- City Specification
- Colour Specification

See the full details of these specifications on page 53.

OPTIONAL SPECIFICATION

WHEELS

- 22" Speed alloy wheel – black painted
- 22" Speed alloy wheel – dark tint
- 22" Sports alloy wheel – black painted
- 22" Sports alloy wheel – Pale Brodgar Satin
- Self-levelling wheel badges by Mulliner
- Winter wheels and tyres
- Summer tyres*
- All season tyres*
- Temporary use spare wheel for home*

EXTERIOR

- Choice of four additional exterior roof colours: Dark Brown, Claret, Dark Grey Metallic and Tweed
- Additional exterior paint colours
- Front vented 420 x 40 mm disc brakes with Bentley branded black 10 piston brake callipers
- Rear vented 380 x 30 mm disc brakes with black 4 piston brake callipers
- Bright chrome radiator matrix grille
- Black gloss radiator matrix grille with black surround
- Bright chromed matrix grille to lower bumper apertures
- Black (matt) lower bumper grille
- Ceramic brakes with black callipers
- Ceramic brakes with red callipers
- Acoustic, heat-insulating, front screen

INTERIOR

- Additional veneers: Burr Walnut by Mulliner, Crown Cut Walnut (NCO), Dark Fiddleback Eucalyptus (NCO), Dark Stained Burr Walnut (NCO), Liquid Amber, open pore Crown Cut Walnut, open pore Dark Burr Walnut, open pore Koa, Piano Linen by Mulliner

- Unique centre console finish in ‘Côtes de Genève’
- Choice of dual veneers by Mulliner applied to the upper fascia, with Grand Black veneer on the lower fascia and centre console
- Carbon fibre to fascia and door waistrails
- Engine turned aluminium – dark tint to centre console
- Neck warmer
- Wind deflector
- Deep pile overmats to front
- Contrast binding to deep pile carpet overmats (front)
- Embroidered ‘Bentley’ emblems to headrests (NCO)
- Semi-aniline leather to seats and door inserts
- Contrast stitching
- Contrast stitching and piping
- Hand cross stitching by Mulliner
- One monotone and four duo-tone colour combinations
- Chrome pinstripe to fascia and door decoration panels
- Heated, duo-tone, 3-spoke, hide-trimmed steering wheel
- Heated, duo-tone, 3-spoke indented hide-trimmed steering wheel
- Heated, single tone, 3-spoke, hide-trimmed steering wheel
- Heated, single tone, 3-spoke indented hide-trimmed steering wheel
- Contrast steering wheel spokes and gear lever by Mulliner
- Contrast seatbelts by Mulliner

CONVENIENCE

- Battery charger*
- Parking heater
- Remote controlled garage door opener*
- Valet key
- First aid kit and warning triangle
- Warning triangle*
- Tool kit and jack*

TECHNOLOGY

- Adaptive Cruise Control*
- Bentley Rotating Display
- Head-Up Display*
- Naim for Bentley premium audio system
- Bang & Olufsen for Bentley audio system
- LED welcome lights
- Digital TV tuner*

SPECIFICATION PACKAGES

- Blackline Specification
- Diamond Knurling Specification
- Front Seat Comfort Specification
- Leather Specification
- Mood Lighting Specification
- Mulliner Colour Specification
- Smoker’s Specification
- Styling Specification – Carbon
- Touring Specification*

See the full details of these specifications on page 53.

Continental GTC Mulliner

STANDARD SPECIFICATION

BRAKES

- Front vented 420 x 40 mm disc brakes with Bentley branded black 10 piston brake callipers
- Rear vented 380 x 30 mm disc brakes with black 4 piston brake callipers
- Brake pad wear indicator

WHEELS

- 22" Mulliner alloy wheel – painted and polished with self-levelling wheel badge
- Electronic Tyre Pressure Monitoring System (TPMS)

SUSPENSION

- Three chamber air suspension with Continuous Damping Control (CDC)
- Electronic Stability Programme (ESP) with Traction Control (TCS)/Anti-lock Braking System (ABS)/Electronic Brake Force Distribution (EBD)/Hydraulic Brake Assist (HBA)/Drag Torque Control (MSR)
- Torque vectoring by brake (V8 engine only)
- Torque vectoring by electronic differential (eLSD) (W12 only)
- Dynamic ride-height control (auto-adjusts at speed) and ground clearance function
- Drive Dynamics Control
- Launch Control
- Bentley Dynamic Ride with Electronic All-Wheel Steering

EXTERIOR

- Choice of 16 exterior paint colours
- Automatically folding four layer insulated fabric roof in three colours: Black, Blue, Grey
- Mulliner double diamond radiator grille – bright
- Bright chromed matrix style grille to lower bumper apertures
- Mulliner double diamond wing vent

- Polished brightware to side windows
- Power latches to the doors and boot
- Electrically adjustable door mirrors with heating, power fold, memory and dip on reverse functions
- Satin silver door mirror caps
- Black/chrome bonnet and boot Bentley wing badges
- ‘BENTLEY’ lettering on the boot
- Full LED matrix headlamps* with high-beam assist
- Full LED supplementary lamps and tail lamps
- Front and rear Park Distance Control
- Acoustic, heat-insulating, front screen
- Acoustic side glass
- Heated rear screen
- Quad oval exhaust finishers (V8)
- Twin large oval exhaust finishers (W12)
- Rain-sensing windscreen wipers
- Battery charger socket
- Jewel fuel filler and oil caps

INTERIOR

- Eight interior roof colours: Beluga, Blue, Grey, Red, Saddle, Light Grey, Camel, Magnolia
- Four occupant seating positions
- ‘Mulliner’ seat emblems
- ‘Mulliner’ fascia badge
- Mulliner quilt pattern to seats, doors and rear quarter panels
- Precision Diamond Quilt by Mulliner pattern with Mulliner contrast stitch to doors and seats
- Mulliner colour combination
- Nappa leather interior
- ‘Mulliner’ illuminated treadplates
- Front seats – electric 24-way adjustment with heating, ventilation, massage, adjustable bolster function and two memory positions
- Single front armrest (with fore/aft slide) – with wireless mobile phone charger, 12 V socket and two USB-C charging points

- Two rear seats with centre stowage inc. 12 V socket and one USB-C charging point
- 12 V socket in boot
- Grand Black veneer with Mulliner overlays
- Diamond Milled technical finish on the centre console
- Chrome metal bulls-eye vents with organ stops
- Mulliner unique clock
- Black seat belt buckles
- Bright boot finisher
- Mulliner overmats with accent micro piping
- Boot carpet in Beluga
- Auto-dimming rear-view mirror
- Two cup holders to rear console
- Electric tilt-and-reach adjustment steering column with memory and easy-entry functions
- Multi-zone automatic climate control
- Air ioniser
- Two cup holders to the centre console
- Lockable, cooled glove box
- Stowage to front doors, centre console and under centre armrest
- Sun visors with illuminated vanity mirrors
- Footwell illumination and ambient lighting
- Boot lid down lighters
- Leather-trimmed gear lever
- Steering wheel mounted gearshift paddles
- Heated, duo-tone, 3-spoke, hide-trimmed steering wheel
- Muliner keybox matched to interior colourway
- Contrast and accent stitching
- Eight Mulliner colour choices, each in tri-colour combination
- Quilted tonneau cover in contrast and accent stitching
- Sports foot pedals

TECHNOLOGY

- Infotainment system with 12.3" high-resolution capacitive touchscreen display. Proximity sensors and hard key controls. Digital radio, HDD-Navigation, advanced music interface (AMI), single DVD/CD slot, two SD card slots, Bluetooth (A2DP) and Wi-Fi (uPnP) streaming
- Bentley Rotating Display
- Head-Up Display*
- Navigation – featuring text-to-speak, voice destination entry and 3D building display
- Apple CarPlay®*
- 60GB solid-state drive (10GB available user space)
- Hidden antennae
- 4G LTE telephone module*
- POI (search)*
- Online real time traffic information*
- Bentley Signature Audio
- Bluetooth and Wi-Fi audio streaming
- Pre-sense braking system (Bentley Safeguard)*
- Adaptive brake lights*
- Keyless entry and ignition
- Exit Warning
- Blind Spot Warning
- Park Assist
- Engine stop/start button
- Alarm and immobiliser
- Adaptive cruise control
- Reversing camera with graphic screen representation
- Driver and passenger airbags
- Side airbags
- Collision Prevention Assist*

SPECIFICATIONS & OPTIONS

NCO = No Cost Option. *Regional applicability. Please contact your local Retailer for availability.

Continental GTC Mulliner (cont.)

TECHNOLOGY (CONT.)

- Pre-crash, rear*
- Multi-collision brake*
- Welcome lighting
- Inductive phone charger
- LED Welcome lights
- Bentley GPS tracking system*

SPECIFICATION PACKAGES

- City Specification
- Colour Specification
- Front Seat Comfort Specification
- Mood Lighting Specification
- Touring Specification*

See the full details of these specifications on page 53.

OPTIONAL SPECIFICATION

WHEELS

- Winter wheels and tyres
- Summer tyres*
- All-season tyres*
- Temporary use spare wheel for home*

EXTERIOR

- Additional exterior paint colours
- Choice of four additional exterior roof colours: Dark Brown, Claret, Dark Grey Metallic and Tweed
- Mulliner double diamond radiator grille - Black
- Black (matt) lower bumper grille
- Mulliner double diamond wing vent – Black
- Body coloured door mirrors (NCO)
- Black and body colour Mulliner door mirror caps
- Bentley branded (front) brake callipers in red
- Ceramic brakes with black callipers
- Ceramic brakes with red callipers

INTERIOR

- Choice of additional veneers: Burr Walnut by Mulliner, Crown Cut Walnut, Dark Stained Burr Walnut, Dark Fiddleback Eucalyptus, Liquid Amber, open pore Crown Cut Walnut, open pore Dark Burr Walnut, open pore Koa, Piano Black, Piano Linen by Mulliner (all veneers NCO)
- One monotone and four duo-tone colour combinations (NCO)
- Unique centre console finish in ‘Côtes de Genève’

- Choice of dual veneers by Mulliner applied to the upper fascia, with Grand Black veneer on the lower fascia and centre console (all NCO)
- Carbon fibre to fascia and door waistrails with Piano Black to centre console (NCO)
- Engine turned aluminium – dark tint
- Wind deflector
- Embroidered Bentley emblems to headrests (NCO)
- Chrome pinstripe to fascia and door decoration panels
- Heated, single tone, 3-spoke, hide-trimmed steering wheel (NCO)
- Heated, single-tone, 3-spoke indented hide-trimmed steering wheel (NCO)
- Heated, duo-tone, 3-spoke indented hide-trimmed steering wheel (NCO)
- Contrast steering wheel spokes and gear lever by Mulliner
- Semi-aniline leather to seats and door inserts
- Contrast seatbelts by Mulliner

CONVENIENCE

- Battery charger*
- Parking heater**
- Remote controlled garage door opener*
- Valet key
- First aid kit and warning triangle
- Tool kit and jack*

TECHNOLOGY

- Naim for Bentley premium audio system
- Bang & Olufsen for Bentley audio system
- Digital TV tuner*

SPECIFICATION PACKAGES

- Diamond Knurling Specification
- Mulliner Alternative Interior Specification (NCO)
- Mulliner Bespoke Specification
- Mulliner Blackline Specification
- Mulliner Colour Specification
- Smoker’s Specification

See the full details of these specifications on page 53.

NCO = No Cost Option. *Regional applicability.
**Not available with V8 engine in certain markets.
Please contact your local Retailer for availability.

V8 engine.



Engine: 4.0 litre V8 petrol twin turbocharged engine
Max power: 542 bhp / 404 kW / 550 PS @ 6,000 rpm
Max torque: 568 lb ft / 770 Nm @ 2,000-4,500 rpm
Transmission: 8-speed dual clutch
Driveline: Active all-wheel drive
Top speed: 198 mph / 318 km/h
0-60 mph / 0-100 km/h: 4.0 / 4.1 seconds
Wheelbase: 2,849 mm / 112.2 inch
Overall length: 4,850 mm / 190.9 inch
Width (including mirrors): 2,187 mm / 86.1 inch
Overall height: 1,399 mm / 55.08 inch
Fuel tank: 90 litres / 20 gallons / 24 US gallons
Boot volume: 235 litres / 8.3 cu ft
Unladen weight (EU): 2,335 kg / 5,148 lb
Gross weight (EU): 2,800 kg / 6,173 lb

Fuel consumption (WLTP Cycle)
Low: 14.0 mpg / 20.2 l/100km
Medium: 21.7 mpg / 13.0 l/100km
High: 26.4 mpg / 10.7 l/100km
Extra High: 25.9 mpg / 10.9 l/100km
Combined: 22.6 mpg / 12.5 l/100km
CO₂ combined: 284 g/km
Driving range: 447 miles / 720 km

Fuel consumption (NEDC Cycle – WLTP Equivalent)*
Urban: 17.0 mpg / 16.6 l/100km
Extra Urban: 31.7 mpg / 8.9 l/100km
Combined: 24.1 mpg / 11.7 l/100km
CO₂ emissions: 266 g/km

Fuel consumption (EPA Cycle)
City driving (US): 16 mpg
Highway driving (US): 26 mpg
Combined (US): 19 mpg

*NEDC Drive Cycle (WLTP equivalent) figures applicable to the following countries: Andorra, Austria, Belgium, Cyprus, Czech Republic, Denmark, Finland, France, Georgia, Germany, Greece, Hungary, Ireland, Israel, Italy, Latvia, Lithuania, Luxembourg, Malta, Monaco, Netherlands, Norway, Poland, Portugal, Romania, Spain, Sweden, Switzerland, Turkey, Ukraine, United Kingdom, Vietnam.
See www.fueleconomy.gov for updated information.
Your mileage will vary and depends on several factors including your driving habits and vehicle condition.

W12 engine.



Engine: 6.0 litre twin-turbocharged W12 TSI
Max power: 650 bhp / 485 kW / 659 PS @ 5,000-6,000 rpm
Max torque: 900 Nm / 664 lb ft @ 1,500-5,000 rpm
Transmission: 8-speed dual clutch
Driveline: Active all-wheel drive
Top speed: 208 mph / 335 km/h
0-60 mph / 0-100 km/h: 3.6 / 3.7 seconds
Wheelbase: 2,849 mm / 112.2 inch
Overall length: 4,850 mm / 190.9 inch
Width (including mirrors): 2,187 mm / 86.1 inch
Overall height: 1,399 mm / 55.1 inch
Fuel tank: 90 litres / 20 gallons / 24 US gallons
Boot volume: 235 litres / 8.3 cu ft
Unladen weight (EU): 2,436 kg / 5,370 lb
Gross weight (EU): 2,865 kg / 6,316 lb

Fuel consumption (WLTP Cycle)
Low: 11.6 mpg / 24.4 l/100km
Medium: 18.8 mpg / 15.0 l/100km
High: 23.7 mpg / 11.9 l/100km
Extra High: 24.4 mpg / 11.6 l/100km
Combined: 20.0 mpg / 14.1 l/100km
CO₂ combined: 320 g/km
Driving range: 397.06 miles / 639 km
Fuel consumption (NEDC Cycle – WLTP Equivalent)*
Urban: 14.4 mpg / 19.6 l/100km
Extra Urban: 27.4 mpg / 10.3 l/100km
Combined: 20.5 mpg / 13.8 l/100km
CO₂ emissions: 314 g/km
Fuel consumption (EPA Cycle)
City driving (US): 12 mpg
Highway driving (US): 18 mpg
Combined (US): 14 mpg

*NEDC Drive Cycle (WLTP equivalent) figures applicable to the following countries: Andorra, Austria, Belgium, Cyprus, Czech Republic, Denmark, Finland, France, Georgia, Germany, Greece, Hungary, Ireland, Israel, Italy, Latvia, Lithuania, Luxembourg, Malta, Monaco, Netherlands, Norway, Poland, Portugal, Romania, Spain, Sweden, Switzerland, Turkey, Ukraine, United Kingdom, Vietnam.
See www.fueleconomy.gov for updated information.
Your mileage will vary and depends on several factors including your driving habits and vehicle condition.

Tyre applicability.

Please click on tyre specification for full product information and EPREL energy labels.

| | | | Continental GTC | Continental GTC Azure | Continental GTC S | Continental GTC Speed | Continental GTC Mulliner | |
|------|---------|---|-----------------|-----------------------|-------------------|-----------------------|--------------------------|-----|
| Size | Make | Tyre specification | V8 | V8 | V8 | W12 | V8 | W12 |
| 21" | Pirelli | P-ZERO 265/40 ZR21 (105Y) XL (B) – (FRONT) | ● | ● | ● | | ● | |
| | | P-ZERO 305/35 ZR21 (109Y) XL (B) – (REAR) | ● | ● | ● | | ● | |
| | | WINTER SOTTO ZERO 3 265/40 R21 (105W) XL (B) – (FRONT) | ● | ● | ● | ● | ● | ● |
| | | WINTER SOTTO ZERO 3 305/35 R21 (109W) XL (B) – (REAR) | ● | ● | ● | ● | ● | ● |
| 22" | Pirelli | P-ZERO 275/35 ZR22 (104Y) XL (B) – (FRONT) | | | ● | ● | ● | ● |
| | | P-ZERO 315/30 ZR22 (107Y) XL (B) – (REAR) | | | ● | ● | ● | ● |
| | | P-ZERO ALL SEASON 275/35 R22 (104W) M+S (B) ncs – (FRONT) | ● | ● | ● | ● | ● | ● |
| | | P-ZERO ALL SEASON 315/30 R22 (107W) M+S (B) ncs – (REAR) | ● | ● | ● | ● | ● | ● |



The model presented in this brochure includes optional specifications. Specifications, standard equipment, options, fabrics and colours are subject to change without notice. Your Bentley Retailer will always have the latest information. The name 'Bentley' and the 'B' wings design are registered trademarks of Bentley Motors Limited. Bentley Motors Limited acknowledges the rights of third parties in other trademarks. The models shown may include European and non-European specifications. © April 2023.