



By appointment  
to HM The Queen  
motor car manufacturers  
Bentley Motors Limited  
Croft, Cheshire



By appointment  
to HRH The Prince of Wales  
motor car manufacturers  
Bentley Motors Limited  
Croft, Cheshire



BENTLEY

New Continental GTC



CO<sub>2</sub> Emissions and fuel consumption data for EU27 is pending, subject to EU Type Approval.

# Continental GTC: Contents

## The Continental GTC 03

- The Continental GTC 04
- Two exquisite models 05
- Continental GTC Speed 06
- Continental GTC Mulliner 07

## Design 08

- The legend continues 09
- A grand design 10
- The new face of exhilaration 11
- Seeing the light 12
- One last look 13
- The ultimate convertible 14
- Design: Continental GTC Speed 15
- Design: Continental GTC Mulliner 16

## Performance 17

- Prepare for exhilaration 18
- The V8 hybrid powertrain 19
- Advanced chassis systems 20
- New suspension system 21
- Drive electric 22
- Choose your mode 23

## Interior 24

- A cabin like no other 25
- Unrivalled craftsmanship 26
- Unique finishes 27
- A new standard for comfort 28
- A breath of fresh air 29
- Digital details 30
- Interior: Continental GTC Speed 31
- Interior: Continental GTC Mulliner 32

## Technology 33

- Intuitive technology 34
- Effortless manoeuvres 35
- Embrace the open road 36
- Connect to more 37
- Wireless by design 38
- Incredible audio systems 39
- The Bentley Rotating Display 40
- Charging and driving your car 43

## Personalisation 44

- Express yourself 45
- Exterior colours 46
- Wheels 47
- Veneers 49
- Hide colours 52
- Roof options 54
- Specification packages 56
- Luggage set 57
- Bespoke commissioning with Mulliner 58
- The Bentley Configurator 59
- Accessories, servicing and maintenance 60
- Financing your Continental GTC 61
- Arranging a test drive 62

### Legend (for above icons)



BentleyMotors.com



Configure your Bentley



Find a Retailer



Request test drive

## World of Bentley 63

- The Bentley Collection 64
- The Bentley Experience 65
- Extraordinary Journeys 66

## Specifications + Options 67

- Continental GTC Speed 68
- Continental GTC Mulliner 70
- V8 hybrid powertrain 72
- Tyre applicability 73

# THE CONTINENTAL GTC



## The Continental GTC

The Continental GTC has long been unique in the automotive world. With the power to transport four adults and their luggage in unrivalled comfort and style, it stands alone as a convertible without compromise. Now, its latest incarnation is here. An all-new design ushers in a purposeful new face and a contemporary new rear. There are new headlamps, tail lamps, bumpers and grilles, all of which serve to enhance the car's unmistakably sleek lines.

Beneath the bonnet, however, an even more radical change has been made. An astoundingly powerful new V8 hybrid powertrain takes the car's smooth, surging power to the next level.


There are two stunning models to choose from: the Continental GTC Speed and the pinnacle of grand touring luxury, the Continental GTC Mulliner. Together, they are pushing the grand tourer forward ever faster, into an exhilarating new era.

CO<sub>2</sub> Emissions and fuel consumption data for EU27 is pending, subject to EU Type Approval.



## Two exquisite models

The latest incarnation of the world's finest convertible grand tourer is available in two truly remarkable models, both featuring the same all-new V8 hybrid powertrain.




### Continental GTC Speed

Styled for performance and equipped to deliver a drive like no other, this is the ultimate in open-top exhilaration.

V8 hybrid.

[DISCOVER](#)



### Continental GTC Mulliner

Unprecedented power meets unrivalled luxury, in the pinnacle of convertible craftsmanship.

V8 hybrid.

[DISCOVER](#)

## Continental GTC Speed

The name 'Speed' has long been used by Bentley to denote high performance. But never before has it represented such power.

The new Continental GTC Speed ushers in a new era in Bentley performance – one powered by a truly groundbreaking new V8 hybrid powertrain. The result is truly astounding, delivering a step-change in power and acceleration. Harnessing it all is a suite of cutting-edge chassis systems, supported by the very latest in driver assistance technology.

This car also marks the debut of a stunning new design, featuring piercing new headlamps that dominate its striking new face. Elsewhere, dark-tint grilles and exterior details come together with exclusive badging, 22" wheels and a new body-coloured Styling Specification included as standard. It's a bold look, for a bold new era.

TO DESIGN

Please refer to Specifications and Options pages for standard and optional features. Not all options are available on all models and within all markets.





## Continental GTC Mulliner

Meet the new, undisputed champion of grand touring craftsmanship: the Continental GTC Mulliner.

Featuring the same phenomenal V8 hybrid powertrain as the Continental GTC Speed, the Continental GTC Mulliner is capable of the same incredible power – yet its styling could not be more different. Flanking the chrome floating-diamond Mulliner grille are stunning new headlamps, with sparkling interior structures that are unique to Mulliner.

Inside, the Nappa leather upholstery features exclusive colour layouts and quilting alongside a wealth of stunning new finishes for the cabin's veneered surfaces. But that is just the beginning. Because the new Continental GTC Mulliner is more than just a car. As the latest and most exquisite demonstration of what the Mulliner marque really means, it can be considered a true object of desire.

TO DESIGN

Please refer to Specifications and Options pages for standard and optional features. Not all options are available on all models and within all markets.



# DESIGN





## The legend continues

Building on the glorious reputation of the Bentley R-Type Continental, the Continental GTC has become an automotive icon, defining convertible grand tourer design.

This generation takes things even further. The short overhangs and muscular haunches may seem familiar, as might the 'power line' that runs from the front wheel down the side of the car. Yet this is a wholly new car, with a new aesthetic entirely.

The steely gaze of the new headlamps is just the beginning. The front and the rear are entirely new – part of an overall aesthetic that makes the car look wider and more planted on the road. Its appearance is clean and modern, thanks to an array of new details including the tail lamps, tailpipe finishers, boot lid, bumpers, front fenders, grilles and diffusers.

This is a car that sets a new standard altogether – not just for the grand tourer, but for all luxury cars – today, tomorrow and beyond.

Please refer to Specifications and Options pages for standard and optional features. Not all options are available on all models and within all markets.

## A grand design

Bringing a designer's vision to life can be a demanding task – especially when that vision is as striking as the new Continental GTC.

Its sculptural form is made possible by an innovative combination of materials and manufacturing techniques. Superforming is one example. By heating large aluminium panels to 500°C, they can be shaped into sweeping curves that would be impossible to achieve using traditional methods. This has made it possible to eliminate the B-pillar between the front and rear side windows, for an even sleeker appearance.

Unlike the rest of the car, the boot lid is crafted from composite materials. This means the aerial can be positioned beneath the surface, without being insulated. So you can connect to radio stations, phone services and the internet, without the need for an unsightly external antenna.

The Continental GTC is a true leap forward in grand tourer design.



## The new face of exhilaration

In moving to a new single-headlamp design, the face of the Continental GTC has undergone its biggest single metamorphosis since its introduction.

Inspired by the steely gaze of a big cat focusing on its prey, the single, oval lamps evoke focus and determination, their refined curved outline countered by the sharp edge of their new brows.

Between each lamp lies a new grille, exclusive to its respective model. The Continental GTC Speed, for example, features a dark tint grille and black chrome bonnet badge, to match the intense dark treatment applied to the rest of its exterior detailing, while the grille of the Continental GTC Mulliner features a chrome floating-diamond design, to reflect its pinnacle status.

Please refer to Specifications and Options pages for standard and optional features. Not all options are available on all models and within all markets.



## Seeing the light

Look closely into the jewel-like 3D latticework inside the new headlamps and you will notice a striking difference between the bold, defined edges in the lamps on the Continental GTC Speed and the smoother, more intricate detailing inside those on the Continental GTC Mulliner. Even the welcome animations the lights perform when the engine is switched on reflect the individual character of each model.

These stunning new lights are not just for show. The main beam can be used at all times, with no need to dip it manually. Central sections of the main beam deactivate when oncoming traffic is detected, while continuing to illuminate the road ahead. The lights can even dim automatically to prevent light reflected from road signs dazzling you as you drive. As a result, driving in darkness or overcast conditions is made safer, easier and more pleasurable than ever before.

Please refer to Specifications and Options pages for standard and optional features. Not all options are available on all models and within all markets.



## One last look

The most memorable view other drivers will experience could well be its hind section, as it roars past and disappears into the distance. It's just one reason why the Bentley design team has spent so much time perfecting the rear of the car, with a suite of aesthetic changes.

They include stunning new slashed oval rear lamp clusters, with smoked lenses for the Continental GTC Speed and rich red lenses for the Continental GTC Mulliner. There is a new rear bumper, diffuser and boot lid. Even the tailpipe finishers – the exquisitely crafted decorative metal coats around the exhaust pipes – have been designed exclusively for each of the two models, their slashed oval shape reflecting the design of the lamps.

Please refer to Specifications and Options pages for standard and optional features.  
Not all options are available on all models and within all markets.

## The ultimate convertible

The new Continental GTC is designed to look and feel incredible – whether you're travelling with the roof up or down.

Available in a choice of stunning colours and fabrics, the four-layer roof is so secure and well-insulated when closed that it's easy to forget you're in a convertible. Yet when the sun comes out, it can be lowered quickly at the touch of a button, even when driving at speeds of up to 30 mph (50 km/h). The roof closure mechanism and low tonneau cover allow for a stylish, streamlined appearance, even when the roof is open.

To keep you comfortable, whatever the temperature, both the driver's seat and front passenger seat include cooling functions, to keep backs and legs comfortable, even on the hottest afternoons. For colder days, each front seat has a heated front armrest and a neck warmer that gently circulates warm air around your neck and shoulders.

Please refer to Specifications and Options pages for standard and optional features.  
Not all options are available on all models and within all markets.



## Design: Continental GTC Speed

The new Continental GTC Speed is a unique expression of sporting luxury, characterised by its dark, uncompromising road presence.

When the car is unlocked, the exterior lights perform a welcome animation exclusive to this model. In the centre of the car's face, meanwhile, sits a new dark tint matrix grille. More dark tint detailing can be seen elsewhere, from the lower bumper grilles to the sports exhaust finisher at the rear. It results in a more defined, purposeful appearance. The tail-lamps, meanwhile, have been treated with smoke-effect lenses.

Finally, sport sills and a new, body-coloured Styling Specification make the car appear even lower and closer to the road, while the 'Speed' fender badges leave its identity in no doubt.

[TO INTERIOR](#)

Please refer to Specifications and Options pages for standard and optional features. Not all options are available on all models and within all markets.



## Design: Continental GTC Mulliner

The new Continental GTC Mulliner makes no secret of its status as the pinnacle of convertible grand tourer design. Complementing its spectacular new form are numerous handcrafted details – not least its sparkling, floating-diamond Mulliner grille.

The painted and polished 22" Mulliner wheels feature self-levelling Bentley 'B' badges, while satin silver mirror caps add further visual interest. Chrome details such as the lower bumper grilles can also be commissioned in black, by adding the Mulliner Blackline Specification – which even applies to the painted sections of the wheels. And when you open the door, one final surprise awaits: Animated Welcome Lamps by Mulliner beam a beautiful animation onto the ground, culminating in a glowing Bentley 'wings' emblem.

[TO INTERIOR](#)

Please refer to Specifications and Options pages for standard and optional features. Not all options are available on all models and within all markets.







PERFORMANCE

## Prepare for exhilaration

The new Continental GTC is the most powerful Bentley ever created – and it achieves this milestone without any compromise whatsoever to ride comfort or refinement.

782 PS. 1,000 Nm. The numbers are truly phenomenal.

But numbers are only part of the equation. An array of sophisticated chassis systems includes suspension with all-new twin-valve dampers. The physical architecture of the system is important too: the batteries are positioned beneath the boot floor to spread the weight optimally and lower the car's centre of gravity. Together with the engine's location, low and behind the front axle, this results in close to a 50/50 weight distribution, for incredible dynamic handling. The dual-clutch, eight-speed transmission, meanwhile, delivers faster, smoother gear changes than ever before. Everything about this car has been calibrated for an unrivalled drive.

Now, back to those numbers.

Please refer to Specifications and Options pages for standard and optional features. Not all options are available on all models and within all markets.



## The V8 hybrid powertrain

Combining an all-new turbocharged 4.0 litre V8 petrol engine with a powerful electric motor, this car can move faster, more smoothly and more responsively than any Bentley before it. In fact, the combined system can deliver 11% more torque than even the previous Continental GTC Speed – and close to 20% more power overall.

The instant response of the electric motor provides a surge of instantaneous torque, for incredible acceleration, even from a standing start. No lag, no delay – just pure propulsion. This allows the engine to be tuned for maximum performance at higher revs, with the combined system delivering 800 Nm of torque at just 1,000 rpm, ultimately rising to a full 1,000 Nm, for incredible power and performance.

Switch to Sport mode and the effect is at its most pronounced: the car can take you right up to 60 mph in just 3.2 seconds and on to a top speed of 177 mph.

Figures shown are subject to final certification.

0 to 60 mph  
**3.2** seconds  
(0 to 100 km/h: 3.4 seconds)

Top Speed  
**177** mph  
(285 km/h)

Power  
**771** bhp  
(782 PS)

Torque  
**1000** Nm  
(738 lb ft)





## Advanced chassis systems

The new Continental GTC features Bentley Dynamic Ride, an innovative 48-volt active roll control system that continuously adjusts the anti-roll bars to reduce body movement especially when cornering.

Torque vectoring, delivered via an electronic limited-slip differential, contributes further to the cornering experience, by slowing the wheels on the inside of a turn and increasing the speed of those on the outside. This enables the car to hold the road more tightly when cornering hard, for a truly thrilling drive.

All-wheel steering is also standard. At low speeds, it shrinks the car's turning circle, for increased manoeuvrability in tight spaces. But when driving faster – on the highway, for example – it steers the rear wheels in the same direction as the front wheels, allowing for smoother lane changes and overtaking.

Please refer to Specifications and Options pages for standard and optional features. Not all options are available on all models and within all markets.

*Speed*

## New suspension system

The new Continental GTC features truly incredible handling, in part due to the inclusion of new twin-valve dampers. They make the suspension system more flexible than ever before, allowing for a more refined ride in Comfort mode, for example – even when negotiating roads with potholes or other surface imperfections. Yet crucially, they also allow for greater control and stability in Sport mode – especially when cornering at speed.

Please refer to Specifications and Options pages for standard and optional features. Not all options are available on all models and within all markets.

## Drive electric

If you need to drive into an ultra-low or zero-emission zone, you can make use of the new Continental GTC's ability to drive in electric-only mode. This means the V8 petrol engine is completely turned off and the car relies entirely on its powerful electric motor for propulsion, providing up to 190 PS (188 bhp) of power and 450 Nm (332 lb ft) of torque – more than enough power for both urban and highway driving. Emissions, as you might imagine, are zero.

## Choose your mode

Like every Bentley, the new Continental GTC gives you access to four different driving modes – Comfort, Bentley, Custom and Sport – each of which can be selected using the Drive Dynamics Control.

While Comfort mode prioritises a smooth ride, the specially calibrated Bentley mode delivers the perfect balance of luxury and exhilaration. Custom mode lets you make your own adjustments to the engine, transmission and suspension and in effect, create your own mode. Sport mode, meanwhile, amplifies the driving experience, making the car noticeably more responsive and, crucially, allowing full deployment of its power and torque – 782 PS and 1000 Nm respectively.



# INTERIOR





## A cabin like no other

The Continental GTC continues to set the standard for grand touring comfort – and nowhere is that more obvious than in the unrivalled design of its cabin.

A wide centre console runs between the four seats, rising smoothly into the fascia and out towards the doors in a flowing shape inspired by the Bentley ‘wings’ emblem.

The fascia panels themselves can be specified with a choice of exquisite single veneers, striking dual veneers or technical finishes. There is a generous range of hides and colour combinations to choose from, featuring new quilting patterns that capture the spirit of each model – and it doesn’t stop at the seats. The handcrafted leather extends to a unique ‘floating’ leather dashboard, which flows seamlessly into the doors, and their sculpted 3D diamond leather panels.

Please refer to Specifications and Options pages for standard and optional features. Not all options are available on all models and within all markets.



## Unrivalled craftsmanship

The upholstery inside every Continental GTC is crafted by hand, with highly trained craftsmen and women personally stitching every hide-clad component, from the seats and the door panels to the leatherbound gear lever and steering wheel.

Exclusive new quilting patterns have been created for the Continental GTC Speed and Continental GTC Mulliner, each reflecting the characters of the cars. And in the door panels, another stunning new approach to the craft of leatherwork: three-dimensional diamond hide, its contemporary form representing a stunning blend of the traditional and the new.

It's all part of Bentley's ongoing journey to define – and redefine – the grand touring experience.

Please refer to Specifications and Options pages for standard and optional features. Not all options are available on all models and within all markets.



Speed

## Unique finishes

Since the creation of the very first Continental GTC, the interior design team at Bentley has worked with the same aim: to ensure that everything you see and everything you touch should feel like metal, wood or leather.

Today, as ever, the single best way to achieve that aim is to work with as wide a range of those materials as possible. Which is why the surfaces inside every new Continental GTC feature such a stunning range of styles and textures, from centre console finishes such as Diamond-Milled Aluminium, satin black and gloss black, to dark chrome treatments for controls such as the gear lever or the organ stops for the bullseye air vents.

Some might call it an obsession. To the team at Bentley, however, it's part of what makes the Continental GTC the world's finest convertible grand tourer.

Please refer to Specifications and Options pages for standard and optional features. Not all options are available on all models and within all markets.



## A new standard for comfort

The luxurious Front Seat Comfort Specification is included as standard with the Continental GTC Mulliner and available as an option for the Continental GTC Speed. It offers a six-setting massage function and 20 different types of adjustments, including headrests, cushions and backrest bolsters, to offer both the driver and front seat passenger a truly indulgent and relaxing experience.

You can also add the Wellness Seating specification. It includes Seat Auto Climate, which monitors the humidity and temperature at the surface of each

front seat and uses a combination of heating and ventilation to respond automatically keeping you comfortable at all times. It also includes Postural Adjust, which uses a series of air cushions inside each front seat to vary the pressure on your muscles throughout your journey. Although the effect is imperceptible on the lowest settings, it reduces fatigue and stiffness significantly, especially when you are in the vehicle for a long time. As a result, you can get out of the car feeling comfortable, even after the longest of journeys.

## A breath of fresh air

A new air conditioning system, improves cabin air quality and reduces the number of harmful PM2.5 particles to which you and your passengers might otherwise be exposed.

With the roof closed, the system monitors the atmosphere inside and outside, then filters out the pollutants. The interior and exterior readings can be seen on the 'Air Quality' panel on the central touchscreen. It also models CO<sub>2</sub> concentration. Provided levels are judged to be low outside the vehicle, clean fresh air is drawn in. If not, the air inside is recirculated instead.

The system can even detect tunnels, switching to recirculation mode before you enter, to avoid air pollution inside the tunnel being drawn inside. When you exit the tunnel, the system switches back, drawing in air from outside again. To save energy, it can even detect whether anyone is sitting in the rear seats. If not, performance in the back of the cabin is automatically reduced.

Please refer to Specifications and Options pages for standard and optional features. Not all options are available on all models and within all markets.





## Digital details.

The digital driver's information panel behind the steering wheel can be displayed with a choice of different graphic design schemes to match your taste, with four different options, including new styles unique to both the Speed and Mulliner models.

Please refer to Specifications and Options pages for standard and optional features. Not all options are available on all models and within all markets.



## Interior: Continental GTC Speed

The cabin of the Continental GTC Speed features an exclusive new quilting pattern, as well as the stunning new 3D diamond hide on the doors. Dinamica is used on the cabin roof, the pillars, the gear lever and the heated steering wheel – all part of an exclusive Speed hide combination. 'Speed' emblems, meanwhile, can be seen on the headrests and the fascia.

There is a vast range of veneers available, as well as optional finishes such as engine-turned aluminium or 'Côtes de Genève' for the centre console. You can opt for dual veneers by Mulliner, or choose from six piano veneers. The optional Dark Chrome Interior Specification, meanwhile, renders all the key, bright chromed components in a darker tint, to match the exterior.

When you commission a Continental GTC Speed, the standard specification is just the beginning of your journey.

[SPECIFICATIONS AND OPTIONS](#)

Please refer to Specifications and Options pages for standard and optional features. Not all options are available on all models and within all markets.



## Interior: Continental GTC Mulliner

Inside the Continental GTC Mulliner, you can choose from a range of sumptuous Nappa hides in eight exclusive three-colour combinations, featuring contrast and accent stitching. New, sustainable olive tan leather has also been used. With an intricate new Mulliner quilting pattern and embroidered 'Mulliner' seat emblems, this is a truly incredible space.

The Grand Black veneers on the fascia are emblazoned with a representation of the car's silhouette, as well as a chrome 'Mulliner' badge. Piano-painted veneers are now also available in other stunning colours. Alternatively, the fascia and centre console can be treated with natural woods or technical options, including a unique diamond-milled technical finish for the centre console. The opportunities are virtually limitless.

[SPECIFICATIONS AND OPTIONS](#)

Please refer to Specifications and Options pages for standard and optional features. Not all options are available on all models and within all markets.



# TECHNOLOGY

The infotainment screen displays a climate control interface. At the top, it shows the temperature as 22.5°C and the mode set to 'AUTO'. Below this, the 'Air Quality' section is active, showing 'PM2.5 AQI' with a color-coded scale from 0 to 250. The scale is currently in the green range (0-50). The screen also shows 'Outside' and 'Inside' air quality indicators. To the right, there is a 3D visualization of the car's interior with green dots representing air quality sensors. At the bottom of the screen, there are buttons for 'Re-circ' and 'Ioniser'. The time '10:10 AM' is displayed in the top right corner.

## Intuitive technology

Every Continental GTC is equipped with the latest driver assistance technology, alongside a suite of Connected Car services, accessible both in-car and remotely, via the My Bentley app. The vehicle can harness infrastructure data to deliver services including real-time traffic information, green traffic light prediction and swarm services from other road users to warn you of potential hazards.

Inside, you can use the new My Bentley App Studio to download your personal choice of applications – which means you don't have to worry about your phone battery draining while you use it for music or navigation, for example. And if you do choose to use a third party navigation app, it will have access to your vehicle's fuel and/or charge levels, for more accurate journey planning.

You can even assign certain frequently-used functions – for example switching navigation announcements on or off – to a custom switch on the steering wheel, for easier access while driving.

Please refer to Specifications and Options pages for standard and optional features. Not all options are available on all models and within all markets.





## Effortless manoeuvres

A suite of driver assistance systems makes the Continental GTC easier to drive than ever – especially when parking and manoeuvring at low speeds.

### Parking made even easier

The new Intelligent Park Assist\* function can identify a suitable parking space, then take control of the steering, pedals and gears while it parks your car. And for occasions when the space is so tight that it would be hard to get in or out of the vehicle once parked, you can use My Bentley Remote Park Assist\*, a feature accessed via the My Bentley smartphone app. Simply step out of the car before it parks and tap the button in the app that activates remote parking. Then hold the button down until your car has safely parked itself. Your car will stop moving straight away if you stop holding the button for any

reason. When you return to your car, you can also use Remote Park Assist\* to drive it out of the parking space, so you can comfortably get back in.

### Assistance when you need it most

When manoeuvring in extremely tight spots or crowded locations, new 3D Surround View allows you to choose the best view available from the four different cameras on the car or, alternatively, see a 3D view of the overall environment around the vehicle.

Manoeuvre Assist provides an extra layer of safety for you and your car, by monitoring the environment in hard-to-navigate spaces and braking automatically if your car looks likely to collide with anything.

\*The driver must constantly supervise the manoeuvre and be able to intervene at any time to maintain safety.  
Please refer to Specifications and Options pages for standard and optional features.  
Not all options are available on all models and within all markets.

## Embrace the open road

Every Continental GTC is equipped with a number of new driving assistance features that make driving long distances more comfortable, such as Adaptive Cruise Assist Plus, Lane Departure Warning and matrix headlamps with High Beam Assist. The Touring Specification provides even more intuitive assistance for long-distance touring.

### More comfortable cruising

The specification includes Adaptive Cruise Assist Plus with Lane Guidance, which enables you to take your feet off the pedals when driving on the highway. As long as you keep your hands on the wheel, it will ensure you stay in the centre of your lane and maintain a safe gap between your car and the car in front – even if traffic slows to a stop and starts again.

### Going beyond the highway

Predictive Adaptive Cruise Assist takes these functions further, by offering the same convenience when you leave the highway. Using data from the

navigation system, it can continue to safely control your speed, accelerating or braking as necessary to account for speed limit changes, bends in the road, junctions and roundabouts.

### Safer driving at night

The night vision camera makes driving in darkness safer – especially in situations where obstacles could be present outside or beyond the headlamp beams. The view from the camera is shown on the driver's information display, highlighting the presence of people or animals in your car's path.

### Key information at eye-level

The Touring Specification also includes a Head-Up Display, which projects key driving information into your line of sight, so you never need to take your eyes away from the road.

Please refer to Specifications and Options pages for standard and optional features. Not all options are available on all models and within all markets.



## Connect to more

The Continental GTC is equipped with a wide range of Connected Car services\*, accessed in-car or remotely via the My Bentley app.

### Seamless integration

You can input a destination into the navigation system via the My Bentley smartphone app when you're away from your car, so you're ready to go the moment you get behind the wheel. Real-time traffic information can then dynamically re-route your journey if there is congestion, while Green Traffic Light Prediction will aid smooth passage through junctions.

### Your choice of apps

With the new My Bentley App Studio, you can opt to download and use many third party apps for navigation, music, video and more, all within the Bentley infotainment system, accessed via the central touchscreen. This means you can use your preferred navigation system, for example, complete with integrated information from your vehicle, such as fuel and/or charge levels.

### A personal experience

In the majority of markets\*, your Continental GTC is connected to the cloud, enabling all your personal settings to be stored remotely and accessed by the car as required. This means that even if you move between compatible Bentleys or to a new one, all navigation system destinations, light settings, seat settings and even your favourite radio stations can be downloaded immediately, making them available from the moment you get in.

### A warm welcome

You can use the My Bentley app to remotely check the status of your locks, lights, mileage and fuel, as well as your electric-only range. You can also remotely pre-heat or pre-cool the cabin, with My Cabin Comfort. Just select your desired temperature and let the car's climate control system do the rest. You can even opt to heat individual seats, armrests and the steering wheel, or defrost the windows remotely, before your journey begins.

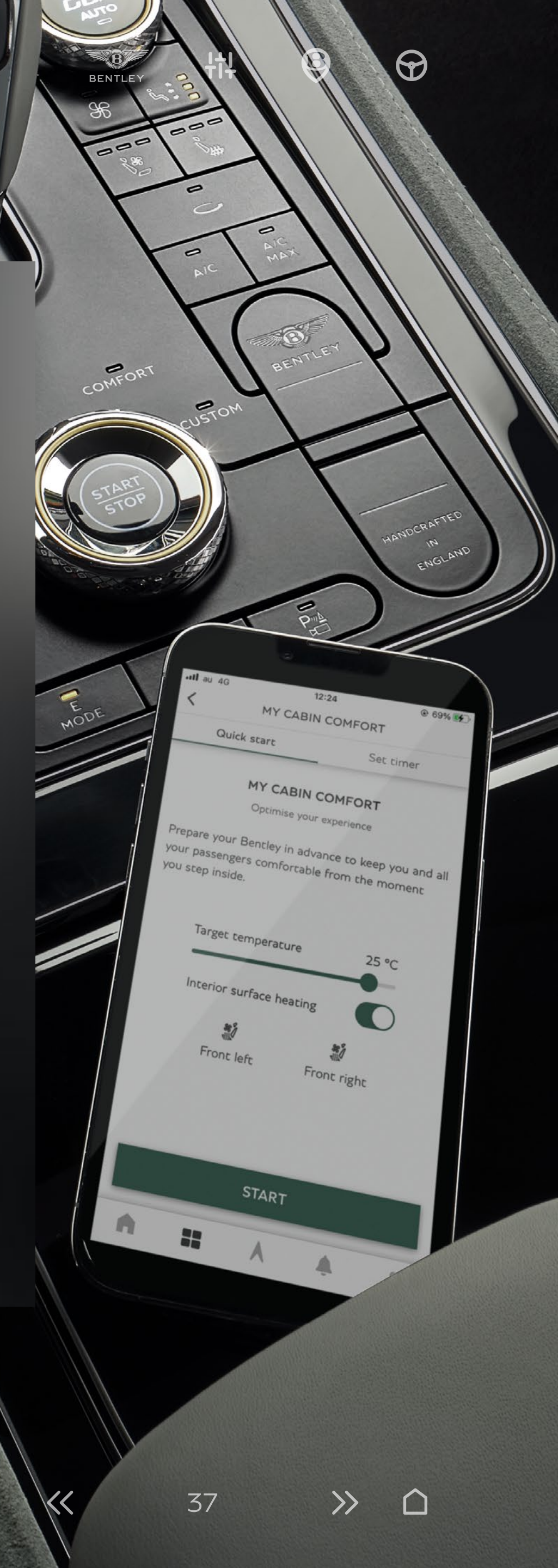
### Leading the charge

E-charging allows you to plug your car into a charger and activate the charging process remotely via the app. Just enter the time you plan to set off, and the charging system calculates a charge rate that will give you the highest possible level of charge, just in time for your departure.

### You're in safe hands

Emergency features include Private eCall and Roadside Assistance, which automatically connect you to a Bentley Emergency Call Centre or the Bentley Roadside Assistance team in the event of an accident. Furthermore, Theft Alert will notify you if the alarm is activated, giving you complete peace of mind.

Please refer to Specifications and Options pages for standard and optional features. Not all options are available on all models and within all markets. \*Vehicle connectivity and service availability varies by market. Please confirm specification with your local certified Bentley Retailer. \*\* With additional data plan purchased through a mobile network operator. Android is a trademark of Google LLC. Apple CarPlay is a registered trademark of Apple Inc.





*Speed*

## Wireless by design

Internet connectivity is available for all occupants throughout, thanks to a built-in Wi-Fi hotspot.\*

Content on your phone can be accessed in your car wirelessly, through Android™ Auto or Apple CarPlay. Online natural speech interaction, meanwhile, lets you activate over 200 car functions by voice, so your hands needn't leave the wheel.

Wireless phone charging is integrated in the stowage area forward of the gear lever, while USB-C ports are also included, for connecting devices that do not support wireless charging.

\*With additional data plan purchased through a mobile network operator. Please refer to Specifications and Options pages for standard and optional features. Not all options are available on all models and within all markets.

## Incredible audio systems

The Continental GTC can be commissioned with a choice of three audio systems. The Bentley Signature Audio system with 650 Watts is tuned by Bentley, or you can choose the 1,500 Watt Bang & Olufsen audio system with BeoSonic sound control.

For really serious audiophiles, the Naim for Bentley premium audio system packs in 18 separate speakers, each with its own amplification, delivering a mighty 2200 Watts of power. Plus, with two active bass units in the front seats, it really does deliver the ultimate audio experience.



## The Bentley Rotating Display

Standard on the Continental GTC Mulliner and optional on the Continental GTC Speed, the Bentley Rotating Display is a unique demonstration of Bentley's remarkable approach to technology and craft – a three-sided instrumentation panel that allows you to choose how much modern technology you want to see.

Before you switch the engine on, all you see is a smooth, veneered section of the fascia. On starting the car, however, the entire panel will rotate, offering you the first of two alternatives.

Please refer to Specifications and Options pages for standard and optional features. Not all options are available on all models and within all markets.



## The Bentley Rotating Display

On ignition, the 12.3" high-resolution touchscreen rolls into view, allowing you to enjoy the full range of the car's infotainment technology. Designed for unrivalled ease of use, it features a proximity sensor that highlights its onscreen controls as you reach towards it.

The screen itself can be configured to display specific information of your choice, or a combination of up to three windows at once. For example, you could view the navigation map, music controls and your mobile phone call list at the same time.

To see the final face of this three-sided display, however, a further rotation is required.

Please refer to Specifications and Options pages for standard and optional features. Not all options are available on all models and within all markets.

## The Bentley Rotating Display

Pressing the 'Screen' button rotates the display one more time. The touchscreen rotates out of view and into its place rolls a veneered fascia panel into which three beautifully crafted analogue dials have been set, complete with polished chrome bezels. This is a feature unique to Bentley, reflecting a more classic style of instrumentation and a bygone age of grand touring.

For an even more minimal driving experience, you can hold the 'Screen' button for two seconds, which rotates the display twice rather than once, allowing you to drive with just the unadorned veneered panel visible. It's up to you.

Please refer to Specifications and Options pages for standard and optional features. Not all options are available on all models and within all markets.



## Charging and driving your car

The new Ultra-Performance Hybrid powertrain offers five driving modes.

**EV Drive:** The default mode when you start the car, it offers emission-free, electric-only driving. It can take you up to 50 miles (80 km) without engaging the V8 engine, at speeds of up to 87 mph (140 km/h).

**Hybrid:** the car will intelligently decide when to employ the engine and when to use electric power alone, for optimum fuel efficiency and emissions. It will base its decisions on your speed and the road type. If you are using the navigation system, the car can automatically switch between electric and petrol power according to your route, preserving battery power for stretches of your journey that might require it, such as a low-emission zone.

**Hold:** preserves battery charge for later use, relying instead on the power of the V8 engine. While it will employ the electric motor at times, it prioritises a responsive drive over fuel efficiency.

**Charge:** the engine is used to charge the battery on the move. This makes it less fuel-efficient than Hold, however it can charge the battery up to 80%.

**Sport Hold:** Putting power and exhilaration first, this is the default when the Drive Dynamics control is set to Sport. It runs the V8 engine at all times, boosted by the electric motor, to unleash the car's full power.

When plugged in at home, the Bentley charging dock will provide a full charge in as little as two hours and 45 minutes. The E-Charging service – accessible via the My Bentley smartphone app or the car's navigation system – helps you find the nearest public chargers when you're on the road.

Please refer to Specifications and Options pages for standard and optional features.  
Not all options are available on all models and within all markets.

# PERSONALISATION

## Express yourself

With a host of accessories and styling options allowing you to configure your Continental GTC to your personal taste, it is highly unlikely you will ever see another one like yours.

You can choose from an extensive palette of exterior paint colours, all of which are designed to maintain their brilliance for many years to come. With numerous different wheel designs, hide options, beautiful natural veneers and distinctive trim options, almost every visible feature of your car can be customised to your own specification – even the fabric for the roof.

## Exterior colours

Your Continental GTC can be commissioned in a choice of seven exterior colours, as standard.

In addition, you can also choose from an extended range and a palette of Mulliner paints, which together give you a vast range of solid, metallic, satin and pearlescent options to choose from. In all, there are more than 80 colours – including the eye-catching new Tourmaline Green, a mid-to-dark metallic finish, and Gravity Grey, a sophisticated finish that appears solid until sunlight hits it, when it reveals sparkling copper accents.

For the ultimate in personalisation, Personal Commission Paint by Mulliner allows you to match a colour that is as unique as you are.

Please refer to Specifications and Options pages for standard and optional features. Not all options are available on all models and within all markets.



## Wheels

Your choice of wheel can subtly or dramatically alter the character of your Continental GTC. That's why there is such a wide range of wheel designs and finishes on offer, including designs that are exclusive to each model.

All wheels available for the Continental GTC Speed and Continental GTC Mulliner are an imposing 22" in size, while there is a choice of finishes including gloss black, silver painted and the stunning new dark grey painted and bright machined, to complement the dark tint brightware on the new GTC Speed.

Please refer to Specifications and Options pages for standard and optional features. Not all options are available on all models and within all markets.

# Wheels



22" Sports alloy wheel –  
Pale Brodgar Satin



22" Sports alloy wheel –  
black painted



22" Speed alloy wheel –  
silver painted



22" Speed alloy wheel –  
dark tint



22" Speed alloy wheel –  
black painted



22" Ten swept spoke alloy wheel –  
grey painted and machined



22" Ten swept spoke alloy wheel –  
black painted



22" Mulliner alloy wheel –  
painted and polished with  
self-levelling badge



22" Mulliner alloy wheel –  
black painted and polished with self-  
levelling badge



22" Mulliner alloy wheel –  
black painted with  
self-levelling badge

See page 73 for tyre applicability. Please refer to Specifications and Options pages for standard and optional wheels. Not all options are available on all models.



## Veneers

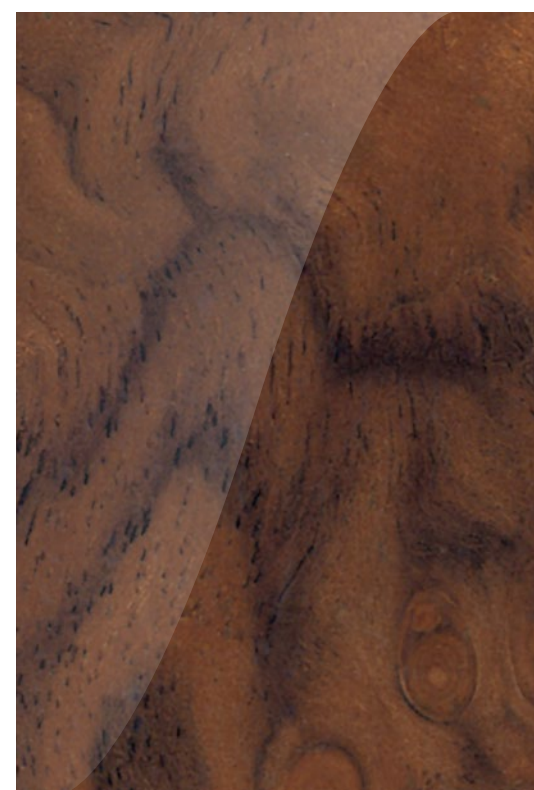
You can choose from several high-gloss and open pore wood veneers, and six gloss painted piano veneers. Dual veneers by Mulliner see your choice of high-gloss wood combined with Grand Black and an eye-catching chrome pinstripe, separating the two finishes.

You can also opt for technical finishes including Dark Tint Engine Turned Aluminium, Dark Tint Diamond Brushed Aluminium and Carbon Fibre. For the centre console only, options include Diamond Milled Aluminium and Côtes de Genève.

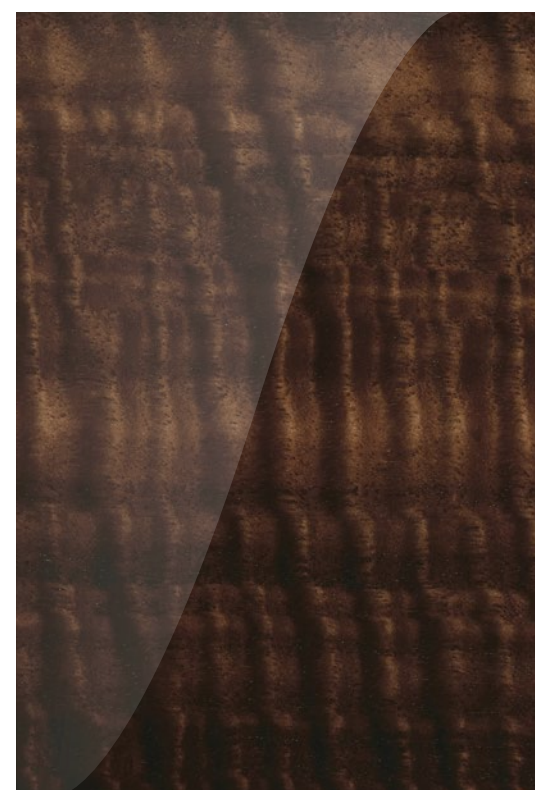
You can even opt to add gleaming metal details to the veneer itself. This stunning, handcrafted finish adds a layer of metal to the veneer during construction. Less than 0.1 millimetre thick, these overlays sit virtually flush to the veneer's surface.

Please refer to Specifications and Options pages for standard and optional features. Not all options are available on all models and within all markets.

# Single Veneers



Burr Walnut by Mulliner



Dark Fiddleback Eucalyptus



Crown Cut Walnut



Liquid Amber



Dark Stained Burr Walnut



Piano Black



Piano Linen by Mulliner



Piano Cricket Ball by Mulliner



Piano Imperial Blue by Mulliner



Piano Burnt Oak by Mulliner



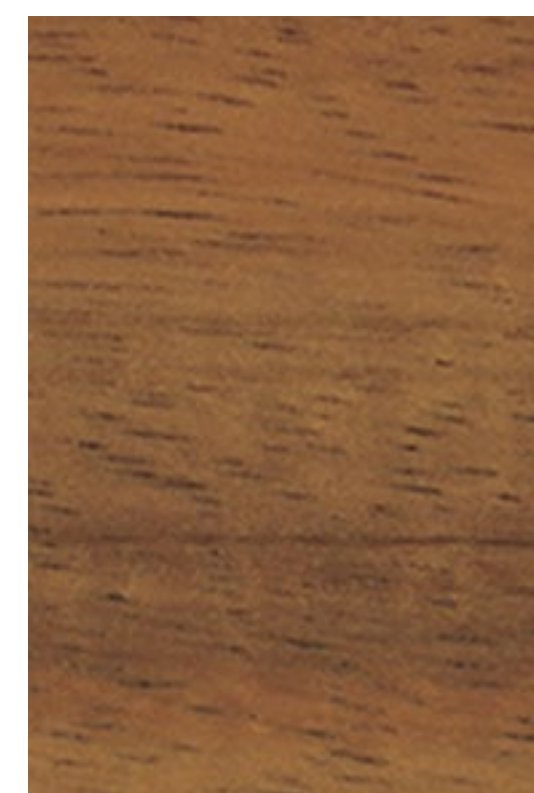
Piano Gravity Grey by Mulliner



Open pore Dark Burr Walnut



Open pore Crown Cut Walnut



Open pore Koa



Grand Black with metal inlay\*

Please refer to Specifications and Options pages for standard and optional veneers.  
 Not all options are available on all models and within all markets.  
 \*Applied to fascia and door waistrail. Piano Black to Centre Console and picnic tables (if selected).

## Dual Veneers by Mulliner



Burr Walnut  
& Grand Black



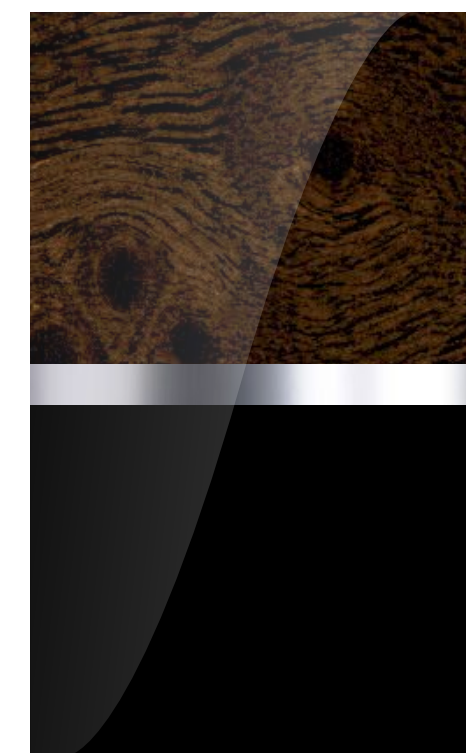
Crown Cut Walnut  
& Grand Black



Dark Fiddleback  
Eucalyptus  
& Grand Black



Liquid Amber  
& Grand Black



Dark Stained  
Burr Walnut  
& Grand Black



Open pore  
Dark Burr Walnut  
& Grand Black



Open pore Koa  
& Grand Black



Open pore  
Crown Cut Walnut  
& Grand Black

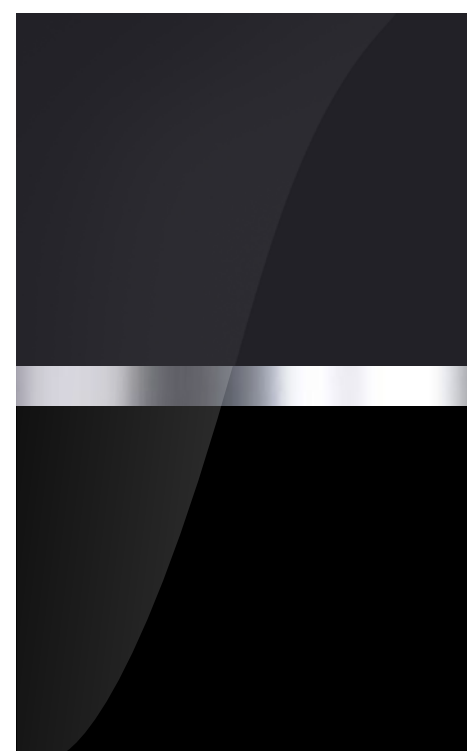


Piano Linen  
& Grand Black

## Technical Finishes



Piano Cricket Ball  
& Grand Black



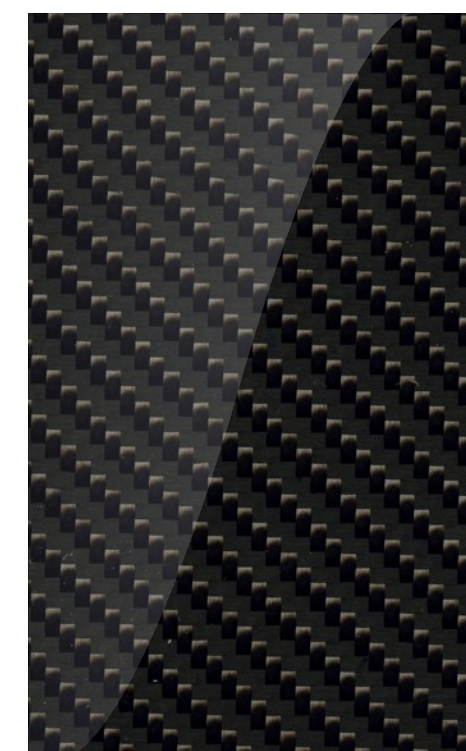
Piano Imperial Blue  
& Grand Black



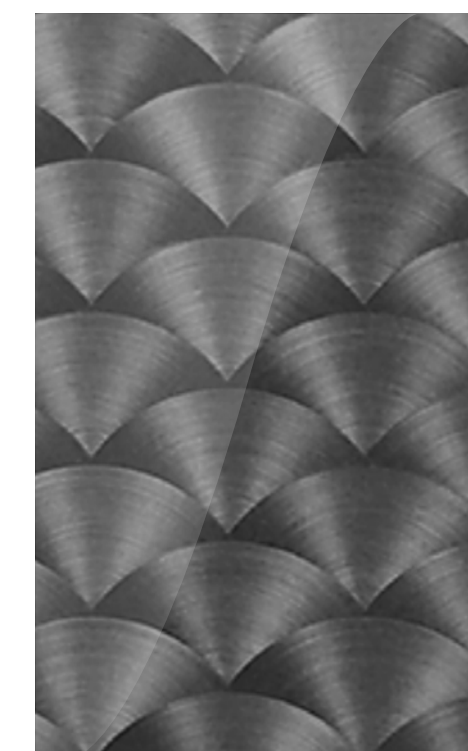
Piano Burnt Oak  
& Grand Black



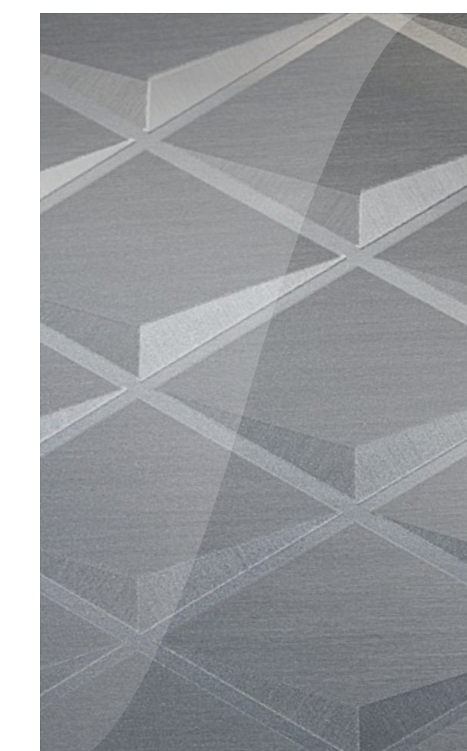
Piano Gravity Grey  
& Grand Black



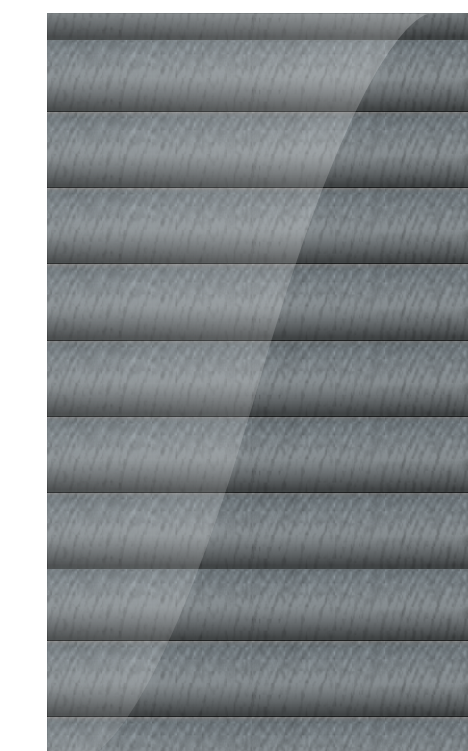
Carbon Fibre\*



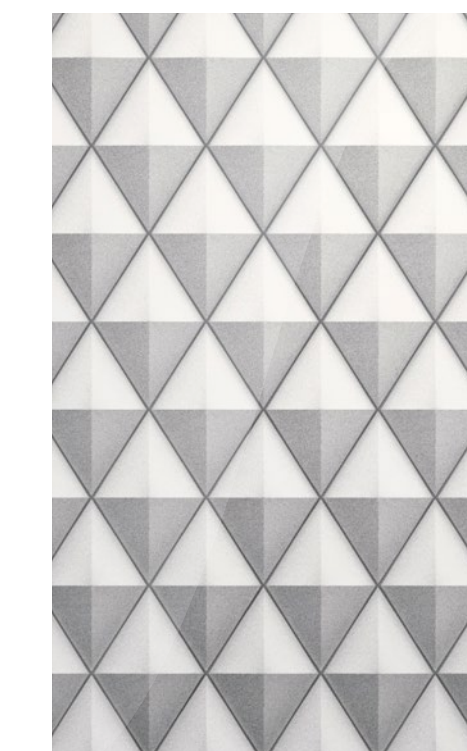
Engine Turned  
Aluminium –  
Dark Tint\*



Diamond Brushed  
Aluminium –  
Dark Tint\*



Côtes de Genève\*\*



Diamond Milled  
Aluminium\*\*

Please refer to Specifications and Options pages for standard and optional veneers.  
Not all options are available on all models and within all markets.  
\*Not available on the centre console. \*\*Available on the centre console only.

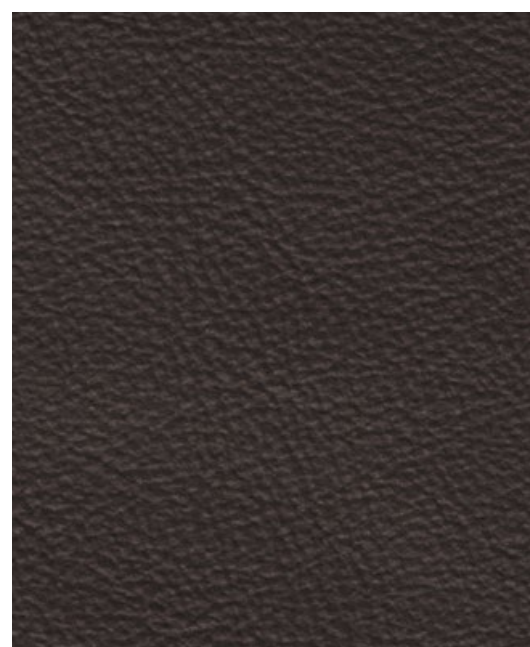
## Hide colours

Every inch of the leather upholstery in the Continental GTC is carefully considered – and crafted by hand. From the fascia to the blind stitching, many different areas require a specialised approach. Sections of the hide with high natural elasticity are reserved for curved surfaces like the seats, rather than for piping or flatter areas such as door inserts. The steering wheel is covered in a highly resistant leather to ensure the natural chemicals from the driver's skin are not absorbed, optimising grip, comfort and longevity. And in the Mulliner model, selected areas of the cabin have been upholstered with new olive tan hides, created using a sustainable production process.

To ensure the interior of your car reflects your personal taste, the Bentley design team have carefully selected a wide range of colours, including new Gravity Grey, created to match the new Gravity Grey exterior paint.

Please refer to Specifications and Options pages for standard and optional features. Not all options are available on all models and within all markets.

## Hide colours



Burnt Oak



Damson



Cricket Ball



Hotspur



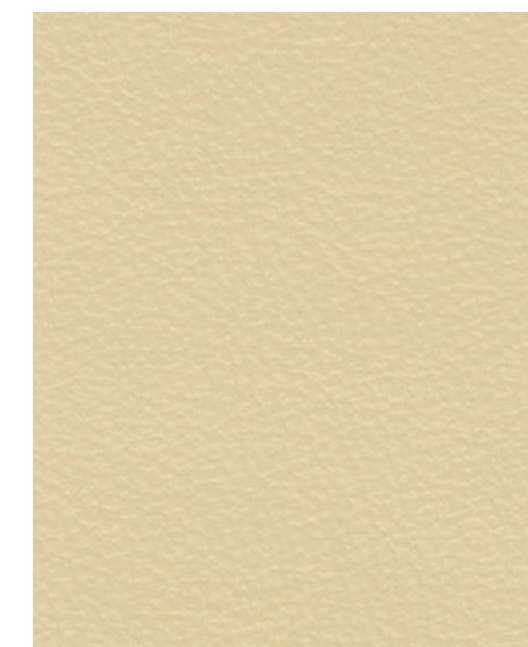
Saddle



Newmarket Tan



Camel



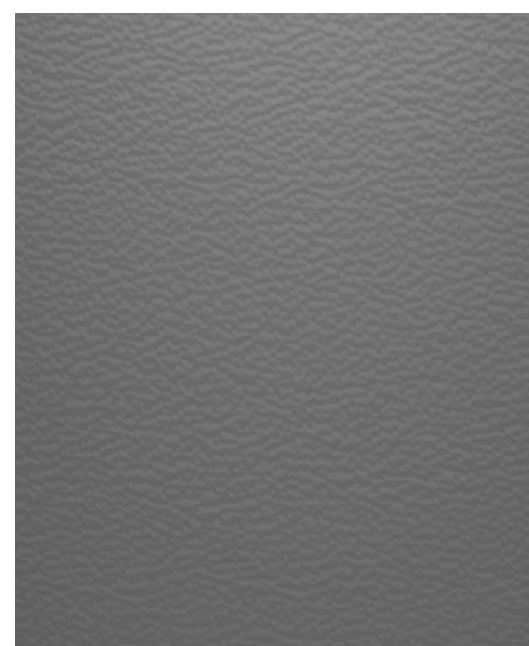
Magnolia



Linen



Portland



Gravity Grey



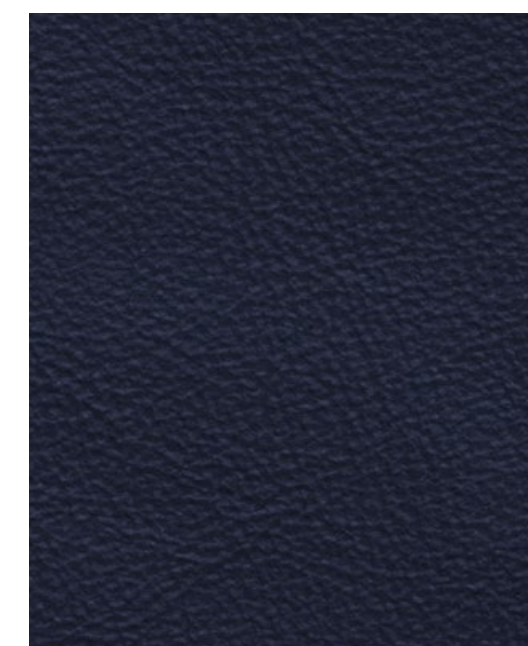
Brunel



Beluga



Cumbrian Green



Imperial Blue

## Mulliner Colour Specification accent colours\*



Pillar Box Red



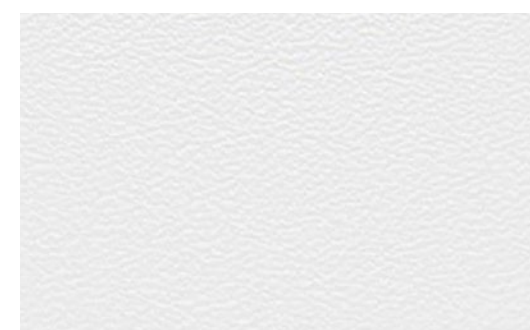
Mandarin



Magenta



Cherry Blossom



White



Cyber Yellow



Light Blue



Kingfisher

\*Available only as part of the Mulliner Colour Specification and as accent colour only. Please refer to Specifications and Options pages for standard and optional hides. Please note, the colours reproduced are for representation purposes only and therefore vary slightly from the actual vehicle.



## Roof options

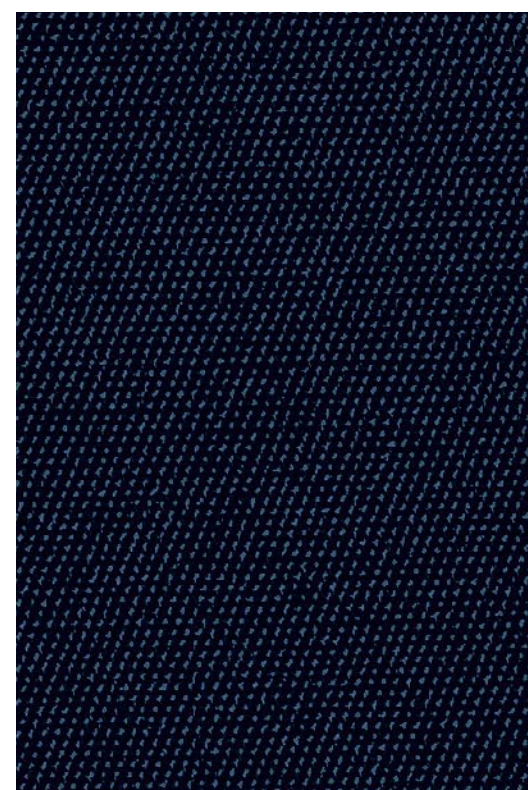
The Continental GTC can be commissioned with your choice of seven different roof colours and eight interior roof linings. And for the ultimate in luxury, the roof of the Continental GTC Mulliner features tactile, hand-stitched quilting on the tonneau cover.

Please refer to Specifications and Options pages for standard and optional features. Not all options are available on all models and within all markets.

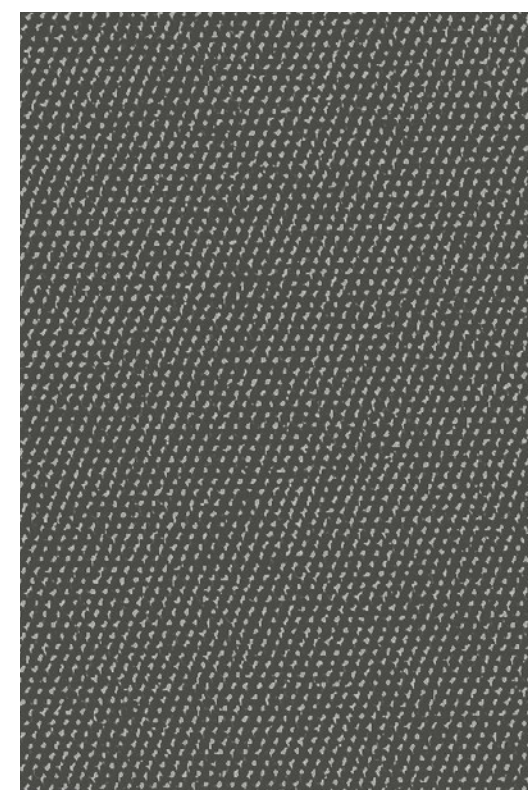
## Roof exterior



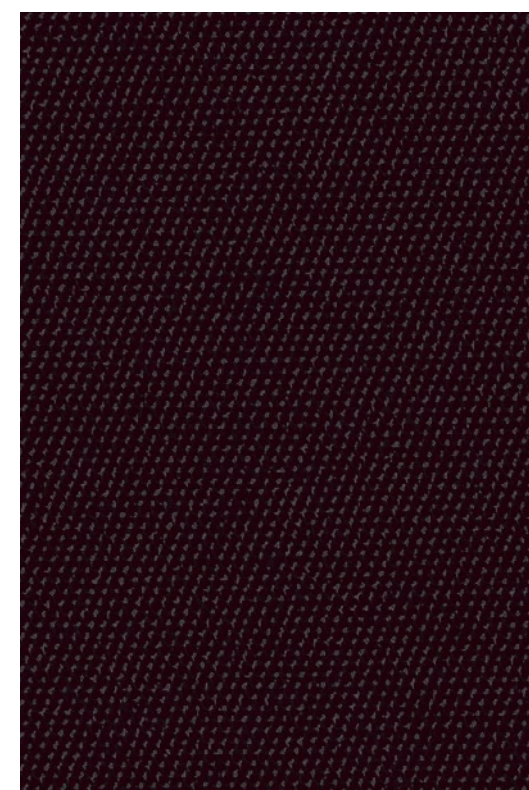
Black



Blue



Grey



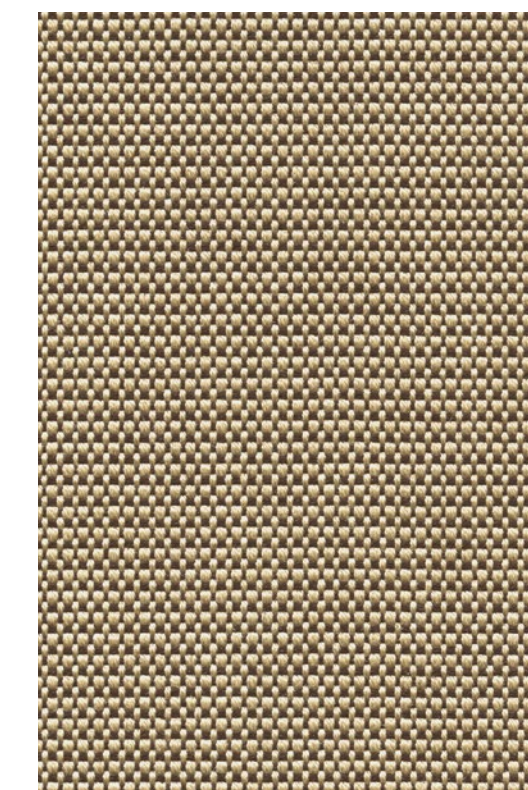
Dark Brown



Dark Grey Metallic



Claret

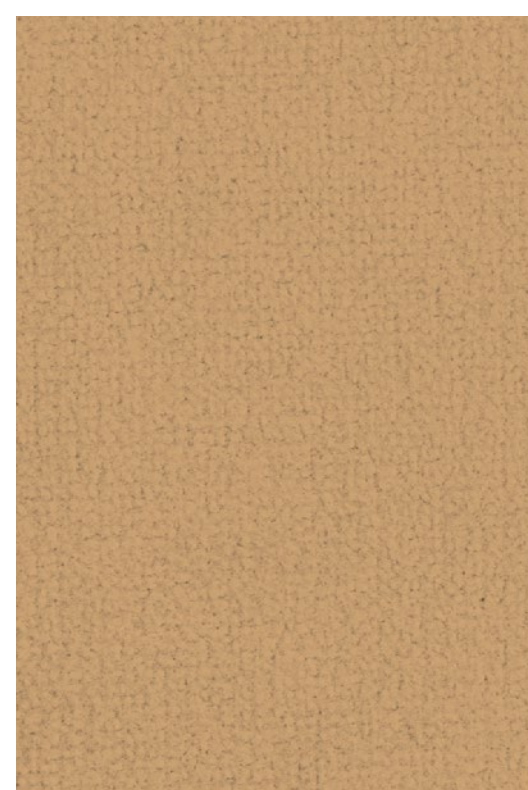


Tweed

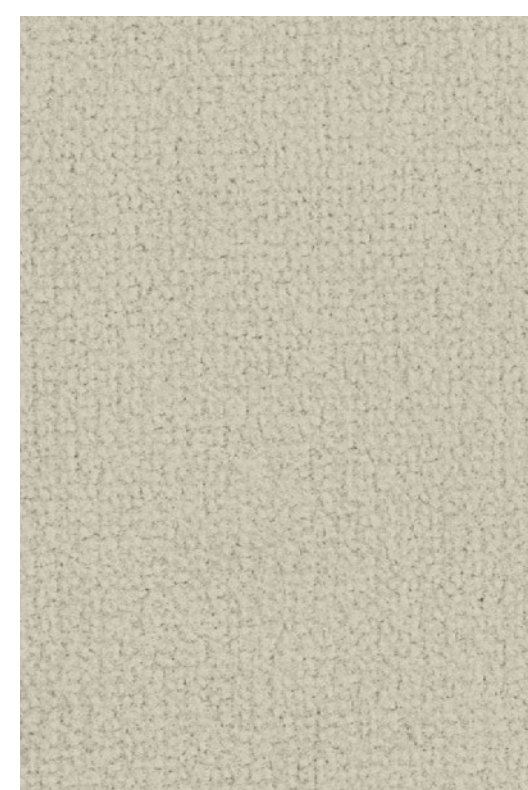
## Roof interior



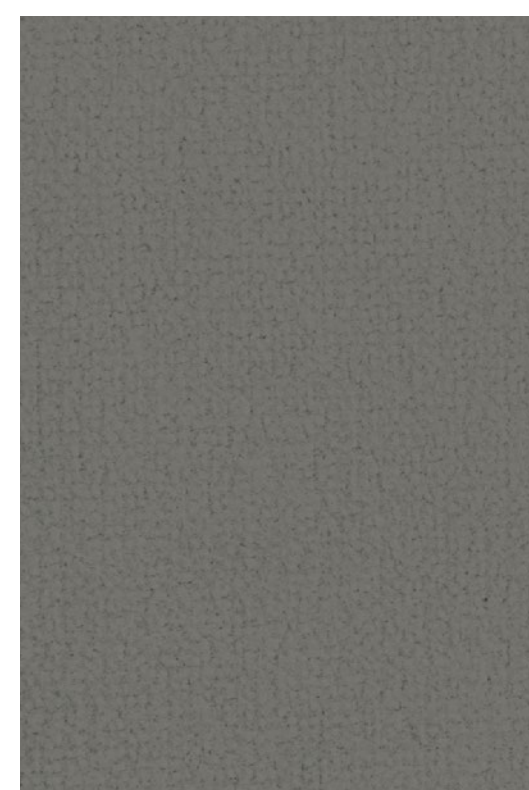
Magnolia



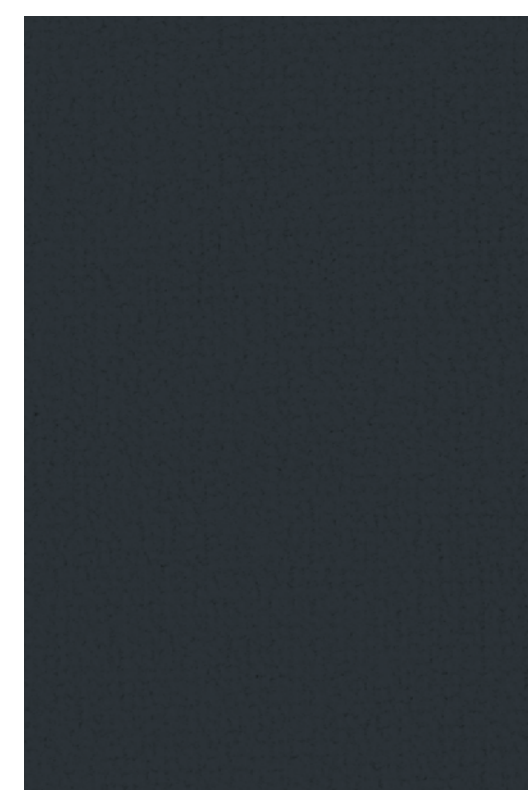
Camel



Light Grey



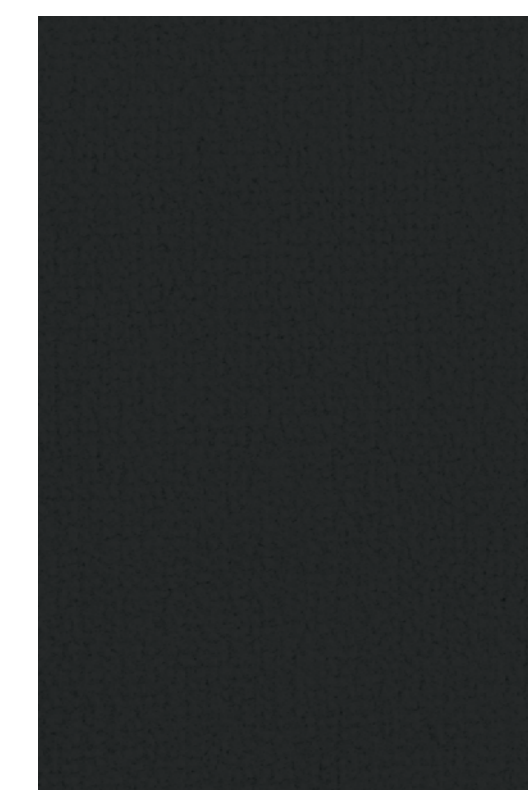
Grey



Blue



Saddle



Beluga



Red

Please refer to Specifications and Options pages for standard and optional roof options. Not all options are available on all models and within all markets. Please note, the colours reproduced are for representation purposes only and therefore vary slightly from the actual vehicle.

## Specification packages.

To make it even easier to specify your perfect Continental GTC, Bentley's engineers and designers have created groups of features, from technology packages that make driving easier to collections of exquisitely crafted styling enhancements.

### LEATHER SPECIFICATION

Hide replaces Dinamica throughout:

- Seats
- Fascias
- Doors
- Rear quarter panels
- Steering wheel
- Hide trimmed gear lever

### COLOUR SPECIFICATION

Opens up a range of additional interior options for the Continental GTC:

- 10 additional hide choices
- Four additional colour combinations

### MULLINER COLOUR SPECIFICATION

Eight new colours available for all stitching, piping and accent options.

### TOURING SPECIFICATION

Digital assistance features for effortless cruising:

- Active Lane Assist
- Adaptive Cruise Assist Plus\*
- Predictive Adaptive Cruise Assist\*
- Night Vision
- Head-Up Display\*

### BLACKLINE SPECIFICATION

Replaces the exterior brightware with a gloss black trim:

- Black door handles
- Black gloss radiator matrix grille with black surround
- Black lower side blades
- Black rear bumper strike and number plate embellishers
- Black headlamp and tail lamp embellishers
- Black side window surrounds
- Black tailpipes

### DIAMOND KNURLING SPECIFICATION

An intricate metal treatment applied to additional elements of the fascia and console:

- Knurled bulls-eye air vents
- Knurled dashboard clock bezel
- Knurled organ stops

### DARK CHROME INTERIOR SPECIFICATION

Recommended in conjunction with exterior Blackline Specification. Includes but not limited to:

- Door handles and switches
- Speaker grilles
- Bullseye air vents
- Organ stops
- Detailing on drivers instrument panel and steering wheel
- Gear lever
- Centre stack and centre console
- Headrest trim

### FRONT SEAT COMFORT SPECIFICATION

The ultimate in Bentley comfort for the driver and front seat passenger:

- Ventilated seats
- Front Seat Neck Warmers
- Multi-mode massage seats
- Adjustable cushion length
- Adjustable side bolsters
- Electric headrests
- Hide-trimmed seat belt buckles
- Heated armrests

### WELLNESS SEATING

- Postural Adjust
- Seat Auto Climate

### MOOD LIGHTING SPECIFICATION

Multi coloured mood lighting:

- Seven different colours in two different palettes, vibrant or muted
- Matching illuminated 'BENTLEY' treadplates

### SMOKER'S SPECIFICATION

- Solid metal ash can in front cabin
- Cigar lighters in front and rear

### MULLINER BLACKLINE SPECIFICATION

Gives the exterior Black look to the Mulliner model:

- 22" Mulliner wheel in full black, or black and bright polished
- Side window surrounds in black
- Lower brightware in black
- Beluga mirror cap tops
- Rear brightware in black
- Headlamp and radiator bezels in black

\*Regional applicability. Please refer to Specifications and Options pages for standard and optional features. Not all options are available on all models and within all markets.





### Luggage set

Among the accessories available for the new Continental GTC is an elegant, five-piece luggage set, crafted in smooth Gravity Grey leather from Italian artisans Pasubio, who are also responsible for the hides used in the car's cabin.

The set comprises three Overnight Bags measuring a generous 50 cm x 24 cm x 25 cm, plus two Accessory Bags measuring 40 cm x 24 cm x 22 cm, so they will fit in the boot perfectly.

## Bespoke commissioning with Mulliner

In the early days of motoring, a new car would consist of an engine, drivetrain, four wheels and a set of controls – nothing more. Everything else was created by a coachbuilder, such as Mulliner.

Today, Mulliner works within Bentley to offer a variety of premium features and optional finishes, alongside bespoke customisation services.

For example, the Mulliner team offer an even greater range of colours and finishes for both the exterior and interior of your Bentley, including painted wheels, stone veneers and colour-matched piano veneers. Further examples include personalisation with embroidery for your seats or chrome overlays to your veneers.

On top of that, the Mulliner team can colour match any object you provide to create a unique paint or hide colour. You can even work with them to design truly bespoke content for your car.

To learn more, visit the website or ask your Retailer about the Mulliner Personal Commissioning Guide.

Please refer to Specifications and Options pages for standard and optional features. Not all options are available on all models and within all markets.



To provide a little inspiration, our team at the Bentley factory in Crewe has created a number of example configurations, demonstrating some of the wonderful combinations you can select.

**Bentley Suggests**

**Tyrolean**

The Tourmaline exterior calls to mind the winding roads that run through the Alpine orchards of South Tyrol – the perfect playground for the New Continental GTC Speed. Inside, the Gravity Grey hi...

[Read more](#)

**CONFIGURE**

- Exterior paint:** Tourmaline Green - by Mulliner
- Wheels:** 22" Ten Swept Spoke Wheel - Grey Painted and Bright Machined
- Interior:** Colour Split - Speed in Cyber Yellow - by Mulliner and Gravity Grey



[Tyrolean](#)



The Victor



Bold Sky



Storm Noir

## The Bentley Configurator

The Bentley Configurator website allows you to explore the new Continental GTC in detail, and see all the colours, features and finishes, just as they will look on a new car. There is simply no better way to explore all your options – and discover the right car for you.

## Accessories, servicing and maintenance

Genuine Bentley accessories represent an opportunity to personalise your Continental GTC even further. From car covers that fit its sleek form perfectly to Paint Protection Film to preserve its striking looks, there are numerous options available to suit your needs. Moreover, they are all designed specifically by Bentley for your Continental GTC.

Consider this just one reason to bring your vehicle back to an official Bentley retailer. No one else has the same expertise, the Bentley-trained technicians or access to genuine Bentley parts – not to mention Service and Maintenance products that can give you complete peace of mind, throughout your vehicle's lifetime. There is no better way to keep your Continental GTC close to the impeccable condition it was in, the day it left the factory.

## Financing your Continental GTC

Our finance agreements are tailored to ensure you make the most of your investment. While other financiers look only at the circumstances of the customer, Bentley Financial Services creates bespoke packages, based not just on your needs and income, but also on the vehicle you have in mind.

To discover more, please talk to your local Bentley Retailer or visit [BentleyMotors.com](https://www.bentleymotors.com)

## Arranging a test drive

As with every Bentley, there is only one way to truly appreciate the new Continental GTC: to sit in the driving seat, take the wheel in your hands and feel the breathtaking surge of acceleration as you put your foot down.

To take the next step on the journey of acquiring your car, we recommend a conversation with a Bentley Retailer.

Please refer to Specifications and Options pages for standard and optional features. Not all options are available on all models and within all markets.

# WORLD OF BENTLEY



## The Bentley Collection

The Bentley Collection is a selection of lifestyle products inspired by the distinctive design of our cars. With many items lovingly crafted by highly skilled artisans, the Bentley Collection takes our exciting heritage and vision for the future, and seamlessly weaves it into extraordinary statement pieces.

From unique pieces for the home that elevate your everyday life, to lovingly crafted clothing and accessories designed with a distinctive eye for detail, you can bring Bentley's unrivalled refinement to every aspect of your life.

To view the complete range, please contact your local Bentley Retailer or visit the online store at [BentleyCollection.com](https://www.bentleycollection.com)



## The Bentley Experience

These unique tours offer unrivalled opportunities to explore behind the scenes at the Home of Bentley in Crewe and visit the flagship showroom, CW1 House.

Our knowledgeable hosts will share rare insights into the design and engineering process. You will meet the craftspeople who build your car and discover the innovations and techniques they're using to craft a sustainable vision of the future.

Available as an on-site, real-world experience or as a virtual tour, the Bentley Experience offers a truly tailored journey, with your questions answered by our experts along the way. There is simply no better way to understand the passion that goes into every Bentley.

## Extraordinary Journeys

We run a number of events each year for Bentley drivers and admirers, such as Extraordinary Journeys. Participants experience the world of Bentley beyond the car – taking in beautiful locations, a focus on wellbeing, an exploration of sustainability, and the chance to meet inspiring people who are reshaping the world.

In the UK, for example, Bentley enthusiasts have the opportunity to tour the Home of Bentley in Crewe before setting off on a journey that includes sustainable fine dining, some of the country's most notable landscapes and landmarks, and hospitality at a range of forward-thinking establishments.

To discover more, please talk to your local Bentley Retailer or visit [BentleyMotors.com](https://www.bentleymotors.com)



# SPECIFICATIONS & OPTIONS

Continental GTC

# Continental GTC Speed

## STANDARD SPECIFICATION

### BRAKES

- Front vented 420 x 40 mm disc brakes with Bentley branded red 10 piston brake callipers
- Rear vented 380 x 30 mm disc brakes with red 4 piston brake callipers
- Brake pad wear indicator

### WHEELS

- 22" Speed alloy wheel – silver painted
- Electronic Tyre Pressure Monitoring System (TPMS)
- 22" summer tyre with Pirelli Noise Cancellation System

### SUSPENSION

- Two chamber, two valve air suspension with Continuous Damping Control (CDC)
- Electronic Stability Programme (ESP) with Traction Control (TCS)/Anti-lock Braking System (ABS)/Electronic Brake Force Distribution (EBD)/Hydraulic Brake Assist (HBA)/ Drag Torque Control (MSR)
- Torque vectoring by electronic differential (eLSD)
- Dynamic ride-height control (auto-adjusts at speed) and ground clearance function
- Bentley Dynamic Ride System with Electronic All-Wheel Steering
- Drive Dynamics Control
- Launch Control

### EXTERIOR

- Choice of seven exterior paint colours
- Automatically folding four layer insulated fabric roof in three colours: Black, Blue, Grey
- Dark tint radiator matrix with dark tint surround
- Dark tint lower bumper grille
- Speed fender badge
- Power latches to the doors and boot
- Chrome bonnet and boot Bentley wing badges
- 'BENTLEY' lettering on the boot
- Body coloured door mirror caps

- Electrically adjustable door mirrors with heating, power fold, memory and dip on reverse functions
- Auto-dimming door mirrors
- Illuminated 'Bentley' sill and stainless steel 'Speed' treadplates with 'Handcrafted in Crewe, England'
- Speed sport sills
- Jewel fuel filler and oil caps
- Full LED matrix headlamps with high-beam assist and Speed welcome and coming home animation
- Full LED tail lamps with smoked lens and Speed welcome and coming home animation
- Acoustic, heat-insulating, front screen
- Acoustic side glass
- Heated rear screen
- Sports exhaust
- Dark tint chrome slashed oval exhaust finishers
- Rain-sensing windscreen wipers
- Hands free boot

### INTERIOR

- Eight interior roof colours: Beluga, Blue, Camel, Grey, Light Grey, Magnolia, Red, Saddle
- Four occupant seating positions
- Precision Diamond Quilt to seats, door casings and rear quarter panels
- Unique 'Speed' mix of Nappa leather and Dinamica to seats, dashboard and lower cabin
- Electric 12-way front seats, heated with two memory functions
- Two rear seats with centre stowage inc. 12 V socket and two USB-C charging points
- Speed embroidered seat emblems
- Speed fascia badge
- Piano Black veneer
- Single tone, three-spoke, hide and Dinamica trimmed heated steering wheel
- Steering wheel mounted gearshift paddles
- Electric tilt-and-reach adjustment steering column with memory and easy-entry functions
- Speed-specific instrument panel graphics
- Sports foot pedals

- Dinamica gear lever
- Single front armrest (with fore/aft slide) – with stowage inc. 12 V socket and two USB-C charging points
- Stowage to front doors, centre console and under centre armrest
- Lockable glove box
- Metal bulls-eye vents with organ stops
- Bentley analogue clock with plain bezel
- Black seat belt buckles
- Deep pile carpets – matched to main or secondary hide
- Standard carpet overmats to the front
- Boot carpet in Beluga
- Two cup holders to rear console
- Sun visors with illuminated vanity mirrors
- Auto-dimming rear-view mirror
- Footwell illumination and ambient lighting
- Advanced air filtration and display
- Multi-zone automatic climate control
- Air ioniser
- Bright boot finisher
- Boot lid down lighters
- 12 V socket in boot
- Keybox

### TECHNOLOGY

- Infotainment system with 12.3" high-resolution capacitive touchscreen display. Proximity sensors and hard key controls. Digital radio, HDD-Navigation, advance music interface (AMI), two SD card slots, Bluetooth (A2DP) and Wi-Fi (uPnP) streaming
- Navigation – featuring text-to-speak, voice destination entry and 3D building display
- Wireless Apple CarPlay®\*
- Wireless Android Auto\*
- 60 GB solid-state drive (10 GB available user space)
- 4G LTE telephone module\*
- POI (search)\*
- Online real time traffic information\*
- Traffic Sign Recognition\*
- City Assist

- Pedestrian Warning
- Reversing Traffic Warning
- Bentley Signature Audio
- Bluetooth and Wi-Fi audio streaming
- Pre-sense braking system (Bentley Safeguard)\*
- Adaptive brake lights\*
- Keyless entry and ignition
- Exit Warning
- Blind Spot Warning
- My Bentley Remote Park Assist†
- Intelligent Park Assist†
- Front and rear Park Distance Control
- Manoeuvre Assist
- 3D Surround View
- Emergency Assist
- Turn Assist Rear
- Engine stop/start button
- Alarm and immobiliser
- Reversing camera with graphic screen representation
- Driver and passenger airbags
- Side airbags
- Collision Prevention Assist\*
- Pre-crash, rear\*
- Multi-collision brake\*
- Inductive phone charger
- Bentley GPS tracking system\*
- Hidden antennae
- Driver assist Environmental Display
- Acoustic Vehicle Alerting System (AVAS)
- Particle matter sensor

### SPECIFICATION PACKAGES

- Colour Specification
- Styling Specification – Body Coloured

†The driver must constantly supervise the manoeuvre and be able to intervene at any time to maintain safety. See the full details of these specifications on page 56. NCO = No Cost Option. \*Regional applicability.

## Continental GTC Speed (cont.)

### OPTIONAL SPECIFICATION

#### BRAKES

- Front vented 420 x 40 mm disc brakes with Bentley branded black 10 piston brake callipers
- Rear vented 380 x 30 mm disc brakes with black 4 piston brake callipers
- Ceramic brakes with black callipers
- Ceramic brakes with red callipers

#### WHEELS

- 22" Speed alloy wheel – black painted
- 22" Speed alloy wheel – dark tint
- 22" Sports alloy wheel – black painted
- 22" Sports alloy wheel – Pale Brodgar Satin
- 22" Ten swept spoke alloy wheel – grey painted and machined
- 22" Ten swept spoke alloy wheel – black painted
- Self levelling wheel badges by Mulliner
- Winter wheels and tyres
- Summer tyres\*
- Temporary use spare wheel for home\*

#### EXTERIOR

- Choice of four additional exterior roof colours: Dark Brown, Claret, Dark Grey Metallic and Tweed
- Additional exterior paint colours
- 'Hybrid' badging (NCO)

#### INTERIOR

- Additional veneers: Burr Walnut by Mulliner, Crown Cut Walnut (NCO), Dark Fiddleback Eucalyptus (NCO), Dark Stained Burr Walnut (NCO), Liquid Amber, open pore Crown Cut Walnut, open pore Dark Burr Walnut, open pore Koa
- Piano Linen, Piano Cricket Ball, Piano Imperial Blue, Piano Burnt Oak, Piano Gravity Grey by Mulliner
- Unique centre console finish in 'Côtes de Genève'

- Choice of dual veneers by Mulliner applied to the upper fascia, with Grand Black veneer on the lower fascia and centre console
- Carbon Fibre to fascia and door waistrails
- Engine Turned Aluminium – Dark Tint to centre console
- Engine Turned Aluminium to fascia and door waistrails – Dark Tint
- Diamond Brushed Aluminium to fascia and door waistrails – Dark Tint
- Chrome pinstripe to fascia and door waistrails
- Diamond knurling
- One monotone and four duo-tone colour combinations
- Embroidered Bentley emblems to headrests (NCO)
- Neck warmer
- Wind deflector
- Deep pile overmats to front and rear
- Contrast binding to deep pile overmats (front)
- Contrast stitching
- Contrast stitching and piping
- Hand cross stitching by Mulliner
- Heated, duo-tone, 3-spoke, hide-trimmed steering wheel
- Heated, duo-tone, 3-spoke indented hide-trimmed steering wheel
- Heated, single tone, 3-spoke, hide-trimmed steering wheel
- Heated, single tone, 3-spoke indented hide-trimmed steering wheel
- Contrast steering wheel spokes and gear lever by Mulliner
- Contrast seatbelts by Mulliner

#### CONVENIENCE

- Remote controlled garage door opener\*
- Valet key
- First aid kit and warning triangle
- Warning triangle\*
- Tool kit and jack\*

#### TECHNOLOGY

- Bentley Rotating Display
- Naim for Bentley premium audio system
- Bang & Olufsen for Bentley audio system
- LED Welcome Lamps by Mulliner
- Animated Welcome Lamps by Mulliner

#### SPECIFICATION PACKAGES

- Blackline Specification
- Dark Chrome Interior Specification
- Diamond Knurling Specification<sup>††</sup>
- Front Seat Comfort Specification
- Wellness Seating
- Leather Specification
- Mood Lighting Specification
- Mulliner Colour Specification
- Smoker's Specification
- Touring Specification\*

See the full details of these specifications on page 56.

NCO = No Cost Option. \*Regional applicability.

††Not available with Dark Chrome Interior Specification.

# Continental GTC Mulliner

## STANDARD SPECIFICATION

### BRAKES

- Front vented 420 x 40 mm disc brakes with Bentley branded black 10 piston brake callipers
- Rear vented 380 x 30 mm disc brakes with black 4 piston brake callipers
- Brake pad wear indicator

### WHEELS

- 22" Mulliner alloy wheel – painted and polished with self-levelling wheel badge
- Electronic Tyre Pressure Monitoring System (TPMS)
- 22" summer tyre with Pirelli Noise Cancellation System

### SUSPENSION

- Two chamber, two valve air suspension with Continuous Damping Control (CDC)
- Electronic Stability Programme (ESP) with Traction Control (TCS)/Anti-lock Braking System (ABS)/Electronic Brake Force Distribution (EBD)/Hydraulic Brake Assist (HBA)/Drag Torque Control (MSR)
- Torque vectoring by electronic differential (eLSD)
- Dynamic ride-height control (auto-adjusts at speed) and ground clearance function
- Bentley Dynamic Ride System with Electronic All-Wheel Steering
- Drive Dynamics Control
- Launch Control

### EXTERIOR

- Choice of seven exterior paint colours
- Automatically folding four layer insulated fabric roof in three colours: Black, Blue, Grey
- Mulliner floating-diamond radiator grille – bright
- Bright chromed matrix style grille to lower bumper apertures
- Mulliner badge
- Chrome bonnet and boot Bentley wing badges
- 'BENTLEY' lettering on the boot
- Satin silver door mirror caps

- Electrically adjustable door mirrors with heating, power fold, memory and dip on reverse functions
- Auto-dimming door mirrors
- Illuminated 'Mulliner' sill and stainless steel treadplates with 'Handcrafted in Crewe, England'
- Polished brightware to side windows
- Jewel fuel filler and oil caps
- Full LED matrix headlamps with high-beam assist and Mulliner welcome and coming home animation
- Full LED tail lamps with red lens and Mulliner welcome and coming home animation
- Acoustic, heat-insulating, front screen
- Acoustic side glass
- Heated rear screen
- Sports exhaust
- Bright chrome slashed oval exhaust finishers
- Rain-sensing windscreen wipers
- Hands free boot
- Power latches to the doors and boot

### INTERIOR

- Eight interior roof colours: Beluga, Blue, Grey, Red, Saddle, Light Grey, Camel, Magnolia
- Quilted tonneau cover in contrast and accent stitching
- Four occupant seating positions
- Precision Diamond Quilt pattern with Mulliner contrast stitch to doors and seats
- Eight Mulliner colour choices, each in tri-colour combination
- Nappa leather interior
- Olive Tan leather
- Front seats – electric 24-way adjustment with heating, ventilation, massage, adjustable bolster function and two memory positions
- Two rear seats with centre stowage inc. 12 V socket and two USB-C charging points
- 'Mulliner' embroidered seat emblems
- 'Mulliner' fascia badge
- Grand Black veneer with Mulliner overlays
- Diamond Milled technical finish on the centre console
- Contrast and accent stitching

- Heated, duo-tone, 3-spoke, hide-trimmed steering wheel
- Steering wheel mounted gearshift paddles
- Electric tilt-and-reach adjustment steering column with memory and easy-entry functions
- Mulliner instrument panel graphics
- Sports foot pedals
- Leather-trimmed gear lever
- Single front armrest (with fore/aft slide) – with stowage inc. 12 V socket and two USB-C charging points
- Stowage to front doors, centre console and under centre armrest
- Lockable glove box
- Metal bulls-eye vents with organ stops
- Mulliner unique clock
- Black seat belt buckles
- Mulliner overmats with accent micro piping
- Boot carpet in Beluga
- Two cup holders to rear console
- Sun visors with illuminated vanity mirrors
- Auto-dimming rear-view mirror
- Footwell illumination and ambient lighting
- Advanced air filtration and display
- Multi-zone automatic climate control
- Air ioniser
- Bright boot finisher
- Boot lid down lighters
- Mulliner keybox matched to interior colourway
- 12 V socket in boot

### TECHNOLOGY

- Infotainment system with 12.3" high-resolution capacitive touchscreen display. Proximity sensors and hard key controls. Digital radio, HDD-Navigation, advance music interface (AMI), two SD card slots, Bluetooth (A2DP) and Wi-Fi (uPnP) streaming
- Bentley Rotating Display
- Navigation – featuring text-to-speak, voice destination entry and 3D building display
- Wireless Apple CarPlay®\*
- Wireless Android Auto\*

- 60GB solid-state drive (10GB available user space)
- 4G LTE telephone module\*
- POI (search)\*
- Online real time traffic information\*
- Traffic Sign Recognition\*
- City Assist
- Pedestrian Warning
- Reversing Traffic Warning
- Bentley Signature Audio
- Bluetooth and Wi-Fi audio streaming
- Pre-sense braking system (Bentley Safeguard)\*
- Adaptive brake lights\*
- Keyless entry and ignition
- Exit Warning
- Blind Spot Warning
- My Bentley Remote Park Assist†
- Intelligent Park Assist†
- Front and rear Park Distance Control
- Manoeuvre Assist
- 3D Surround View
- Emergency Assist
- Turn Assist Rear
- Engine stop/start button
- Alarm and immobiliser
- Reversing camera with graphic screen representation
- Driver and passenger airbags
- Side airbags
- Collision Prevention Assist\*
- Pre-crash, rear\*
- Multi-collision brake\*
- Animated Welcome Lamps by Mulliner
- Inductive phone charger
- Bentley GPS tracking system\*
- Hidden antennae

†The driver must constantly supervise the manoeuvre and be able to intervene at any time to maintain safety. See the full details of these specifications on page 56. NCO = No Cost Option. \*Regional applicability. Please visit My Bentley support site for details.

## Continental GTC Mulliner (cont.)

- Driver assist Environmental Display
- Acoustic Vehicle Alerting System (AVAS)
- Particle matter sensor

### SPECIFICATION PACKAGES

- Colour Specification
- Front Seat Comfort Specification
- Wellness Seating
- Mood Lighting Specification
- Touring Specification\*

### OPTIONAL SPECIFICATION

#### BRAKES

- Front vented 420 x 40 mm disc brakes with Bentley branded red 10 piston brake callipers
- Rear vented 380 x 30 mm disc brakes with red 4 piston brake callipers
- Ceramic brakes with black callipers
- Ceramic brakes with red callipers

#### WHEELS

- 22" Mulliner alloy wheel – black with self-levelling wheel badge
- 22" Mulliner alloy wheel – black and polished with self-levelling wheel badge
- Winter wheels and tyres
- Summer tyres\*
- Temporary use spare wheel for home\*

#### EXTERIOR

- Additional exterior paint colours
- Choice of four additional exterior roof colours: Dark Brown, Claret, Dark Grey Metallic and Tweed
- Wind deflector
- Body coloured door mirror caps (NCO)
- Black and body coloured Mulliner door mirror caps
- 'Hybrid' badging (NCO)

#### INTERIOR

- Additional veneers: Burr Walnut by Mulliner, Crown Cut Walnut, Dark Fiddleback Eucalyptus, Dark Stained Burr Walnut, Liquid Amber, open pore Crown Cut Walnut, open pore Dark Burr Walnut, open pore Koa, Piano Black (all veneers NCO)
- Piano Linen, Piano Cricket Ball, Piano Imperial Blue, Piano Burnt Oak, Piano Gravity Grey by Mulliner
- Unique centre console finish in 'Côtes de Genève'

- Choice of dual veneers by Mulliner applied to the upper fascia, with Grand Black veneer on the lower fascia and centre console (all NCO)
- Carbon Fibre to fascia and door waistrails with Piano Black centre console (NCO)
- Engine Turned Aluminium – Dark Tint to centre console (NCO)
- Engine Turned Aluminium to fascia and door waistrails – Dark Tint (NCO)
- Diamond Brushed Aluminium to fascia and door waistrails – Dark Tint (NCO)
- One monotone and four duo-tone colour combinations (NCO)
- Embroidered 'Bentley' emblems to headrests (NCO)
- Contrast stitching and piping (NCO)
- Hand cross stitching by Mulliner
- Heated, single tone, 3-spoke, hide-trimmed steering wheel (NCO)
- Heated, single-tone, 3-spoke indented hide-trimmed steering wheel (NCO)
- Heated, duo-tone, 3-spoke indented hide-trimmed steering wheel (NCO)
- Contrast steering wheel spokes and gear lever by Mulliner
- Contrast seatbelts by Mulliner

#### CONVENIENCE

- Remote controlled garage door opener\*
- Valet key
- First aid kit and warning triangle
- Warning triangle\*
- Tool kit and jack\*

### TECHNOLOGY

- Naim for Bentley premium audio system
- Bang & Olufsen for Bentley audio system

### SPECIFICATION PACKAGES

- Diamond Knurling Specification
- Dark Chrome Interior Specification
- Mulliner Alternative Interior Specification (NCO)
- Mulliner Bespoke Specification
- Mulliner Blackline Specification
- Mulliner Colour Specification
- Smoker's Specification
- Styling Specification – Body Coloured

See the full details of these specifications on page 56.  
NCO = No Cost Option. \*Regional applicability.  
Please visit My Bentley support site for details.

## V8 hybrid powertrain



Engine: 4.0 L V8 PHEV engine

Max power: 771 bhp / 782 PS / 575 kW  
(Combined System Power)

Max torque: 738 lb ft / 1000 Nm  
(Combined System Torque)

Transmission: 8-speed dual clutch

Driveline: Active all-wheel drive

Top speed: 177 mph / 285 km/h

0-60 mph / 0-100 km/h: 3.2 / 3.4 seconds

Wheelbase: 2,848 mm / 112.1 inch

Overall length: 4,895 mm / 192.7 inch

Width (including mirrors): 2,187 mm / 86.1 inch

Overall height: 1,392 mm / 54.8 inch

Fuel tank: 80 litres / 18 gallons / 21 US gallons

Boot volume: 134 litres / 4.73 cu ft

Unladen weight (EU): 2,636 kg

Gross weight (EU): 3,090 kg

### Fuel consumption (WLTP Cycle)

Combined (UK): TBC

CO<sub>2</sub> combined: TBC

Driving range: TBC

E-range (EAER): TBC

### Fuel consumption

(NEDC Cycle WLTP Equivalent – Europe)

Combined (UK): TBC

CO<sub>2</sub> Emissions: TBC

E-range: TBC

### Fuel consumption (NEDC Cycle – ROW)

Urban: TBC

Extra Urban: TBC

Combined: TBC

CO<sub>2</sub> Emissions: TBC

### Fuel consumption (EPA Cycle)

City driving (US): TBC

Highway driving (US): TBC

Combined (US): TBC

Figures shown are subject to final certification.  
CO<sub>2</sub> Emissions and fuel consumption data for EU27 is pending, subject to EU Type Approval.  
Your mileage will vary and depends on several factors including your driving habits and vehicle condition.



## Tyre applicability.

Please click on tyre specification for full product information and EPREL energy labels.

Size	Make	Tyre specification	Continental GTC Speed	Continental GTC Mulliner
			V8 hybrid	V8 hybrid
21"	Pirelli	WINTER SOTTO ZERO 3 265/40 R21 (105W) XL (B) – (FRONT)	●	●
		WINTER SOTTO ZERO 3 305/35 R21 (109W) XL (B) – (REAR)	●	●
22"	Pirelli	PZERO 275/35R22 104W XL A/S ncs (BH) – (FRONT)	●	●
		PZERO 315/30R22 107W XL A/S ncs (BH) – (REAR)	●	●
		PZERO 275/35ZR22 (104Y) XL ncs (BH) – (FRONT)	●	●
		PZERO 315/30ZR22 (107Y) XL ncs (BH) – (REAR)	●	●





The model presented in this brochure includes optional specifications. Specifications, standard equipment, options, fabrics and colours are subject to change without notice. Your Bentley Retailer will always have the latest information. The name 'Bentley' and the 'B' wings design are registered trademarks of Bentley Motors Limited. Bentley Motors Limited acknowledges the rights of third parties in other trademarks. The models shown may include European and non-European specifications. © October 2024.

