



By Appointment to
His Majesty The King
Motor Car Manufacturers
Bentley Motors Limited
Crewe Cheshire



BENTLEY

New Continental GTC Range



CO₂ Emissions and fuel consumption data for EU27 is pending, subject to EU Type Approval.

New Continental GTC Range: Contents

The Continental GTC 03

- The Continental GTC 04
- Two exquisite models 05
- Continental GTC 06
- Continental GTC Azure 07
- Continental GTC Speed 08
- Continental GTC Mulliner 09

Design 10

- The legend continues 11
- A grand design 12
- The new face of exhilaration 13
- Seeing the light 14
- One last look 15
- The ultimate convertible 16
- Design: Continental GTC 17
- Design: Continental GTC Azure 18
- Design: Continental GTC Speed 19
- Design: Continental GTC Mulliner 20

Performance 21

- Start something powerful 22
- Two V8 hybrid powertrains 23
- Advanced chassis systems 24
- State-of-the-art suspension 25
- Drive electric 26
- Choose your mode 27

Interior 28

- A cabin like no other 29
- Unrivalled craftsmanship 30
- Unique finishes 31
- A new standard for comfort 32
- A breath of fresh air 33
- Digital details 34
- Interior: Continental GTC 35
- Interior: Continental GTC Azure 36
- Interior: Continental GTC Speed 37
- Interior: Continental GTC Mulliner 38

Technology 39

- Intuitive technology 40
- Effortless manoeuvres 41
- Embrace the open road 42
- Connect to more 43
- Wireless by design 44
- Incredible audio systems 45
- The Bentley Rotating Display 46
- Charging and driving your car 49

Personalisation 50

- Express yourself 51
- Exterior colours 52
- Wheels 53
- Veneers 55
- Hide colours 58
- Roof options 60
- Specification packages 62
- Luggage set 63
- Bespoke commissioning with Mulliner 64
- Accessories, servicing and maintenance 65
- Financing your Continental GTC 66
- The Bentley Collection 67
- The Bentley Experience 68

Legend (for above icons)

- BentleyMotors.com
- Configure your Bentley
- Find a Retailer
- Request test drive

Specifications + Options 69

- Continental GTC 70
- Continental GTC Azure 72
- Continental GTC Speed 74
- Continental GTC Mulliner 76
- High Performance Hybrid powertrain 78
- Ultra Performance Hybrid powertrain 79
- Tyre applicability 80



THE CONTINENTAL GTC



3



The Continental GTC

The Continental GTC has long been unique in the automotive world. With the power to transport four adults and their luggage in unrivalled comfort and style, it is a convertible without compromise.

Most onlookers are smitten at first sight. Yet there is so much more to experience, beyond its stunning design. Beneath the bonnet, Bentley's new V8 hybrid powertrains unleash unprecedented levels of power.


There are now four stunning models to choose from: the Continental GTC is the consummate convertible grand tourer, while the Continental GTC Azure delivers elevated comfort and wellbeing. The Continental GTC Speed is focused on performance, while the Continental GTC Mulliner represents the pinnacle of grand touring luxury. Together, they are pushing the grand tourer forward ever faster, into an exhilarating new era.

CO₂ Emissions and fuel consumption data for EU27 is pending, subject to EU Type Approval.



Four exquisite models

The definitive convertible grand tourer is now available in four remarkable models, each representing a different dimension of the Continental GTC.




Continental GTC

The quintessential Continental GTC, offering the purest expression yet of the luxury convertible grand tourer.

High Performance Hybrid.

[DISCOVER](#)




Continental GTC Azure

Elevated comfort and technology, delivered in a convertible grand tourer designed for enhanced wellbeing.

High Performance Hybrid.

[DISCOVER](#)



Continental GTC Speed

Styled for performance and equipped to deliver a drive like no other, this is the ultimate in open-top exhilaration.

Ultra Performance Hybrid.

[DISCOVER](#)



Continental GTC Mulliner

Unprecedented power meets unrivalled luxury, for the ultimate convertible grand touring experience.

Ultra Performance Hybrid.

[DISCOVER](#)

CO₂ Emissions and fuel consumption data for EU27 is pending, subject to EU Type Approval.

Continental GTC

The new Continental GTC is the essence of Bentley's vision for luxury grand touring.

Powered by the Bentley High Performance Hybrid powertrain, it delivers smooth, responsive and exhilarating performance, whatever the driving situation.

Its sleek lines reflect the unique combination of power and refinement that has characterised the Continental GTC since its introduction. Instantly recognisable thanks to its black grilles and gloss black front splitter, it combines a stunning handcrafted interior with Bentley's latest suite of in-car technology. And like every Bentley, it offers an incomparable opportunity for personalisation.

TO DESIGN

Please refer to Specifications and Options pages for standard and optional features. Not all options are available on all models and within all markets.



Continental GTC Azure

As well as looking stunning, the new Continental GTC Azure is focused entirely on the way it makes you and your passengers feel. From the moment its gleaming, vertical-ribbed grille first catches your eye to the elation you experience as you glide out onto the open road, it is nothing short of mesmerising.

Inside, it offers a cocoon of wellbeing for driver and passengers alike. Natural materials and ergonomic design come together to create the perfect interior space – with sunlight flooding in through the panoramic sunroof overhead.

With the new High Performance Hybrid V8 powertrain, it combines exhilarating power with the ability to travel on electric power alone – just one element of a truly remarkable suite of technology.

TO DESIGN

Please refer to Specifications and Options pages for standard and optional features. Not all options are available on all models and within all markets.



Continental GTC Speed

The name 'Speed' has long been used by Bentley to denote high performance. But never before has it represented such power.

The new Continental GTC Speed is powered by a truly groundbreaking new V8 hybrid powertrain, delivering phenomenal power and acceleration. Harnessing it all is a suite of cutting-edge chassis systems, supported by the very latest in driver assistance technology.

This car also marks the debut of a stunning new design, featuring piercing new headlamps that dominate its striking new face. Elsewhere, dark-tint grilles and exterior details come together with exclusive badging, 22" wheels and a new body-coloured Styling Specification. It's a bold look, for a bold new era.

TO DESIGN

Please refer to Specifications and Options pages for standard and optional features. Not all options are available on all models and within all markets.





Continental GTC Mulliner

Meet the new, undisputed champion of grand touring craftsmanship: the Continental GTC Mulliner.

Featuring the same phenomenal V8 hybrid powertrain as the Continental GTC Speed, the Continental GTC Mulliner is capable of the same incredible power – yet its styling could not be more different. Flanking the chrome floating-diamond Mulliner grille are stunning new headlamps, with sparkling interior structures that are unique to Mulliner.

Inside, the Nappa leather upholstery features exclusive colour layouts and quilting alongside a wealth of stunning new finishes for the cabin's veneered surfaces. But that is just the beginning. Because the new Continental GTC Mulliner is more than just a car. As the latest and most exquisite demonstration of what the Mulliner marque really means, it can be considered a true object of desire.

TO DESIGN

Please refer to Specifications and Options pages for standard and optional features. Not all options are available on all models and within all markets.



DESIGN



The legend continues

Building on the glorious reputation of the Bentley R-Type Continental, the Continental GTC has become an automotive icon, defining convertible grand tourer design.

The latest generation takes things even further. Its short overhangs and muscular haunches have long been a Bentley hallmark, as has the 'power line' that runs down the side of the car. Yet this is a car with a truly forward-looking aesthetic.

The steely gaze of the new headlamps is just the beginning. The entire car has been designed to appear even wider and more planted on the road, with truly unrivalled presence. In fact, this is a car that sets a new design standard – not just for the grand tourer, but for all luxury cars – today, tomorrow and beyond.

Please refer to Specifications and Options pages for standard and optional features. Not all options are available on all models and within all markets.

A grand design

Bringing a designer's vision to life can be a demanding task – especially when that vision is as striking as the new Continental GTC.

Its sculptural form is made possible by an innovative combination of materials and manufacturing techniques. Superforming is one example. By heating large aluminium panels to 500°C, they can be shaped into sweeping curves that would be impossible to achieve using traditional methods. This has made it possible to eliminate the B-pillar between the front and rear side windows, for an even sleeker appearance.

Unlike the rest of the car, the boot lid is crafted from composite materials. This means the aerial can be positioned beneath the surface, without being insulated. So you can connect to radio stations, phone services and the internet, without the need for an unsightly external antenna.

In the field of grand tourer design, this is the state of the art.



The new face of exhilaration

With its stunning new single-headlamp design, the face of the Continental GTC has evolved radically since its introduction in 2003.

Inspired by the steely gaze of a big cat focusing on its prey, the single, oval lamps evoke focus and determination, their refined curved outline countered by the sharp edge of their new brows.

Between each lamp lies a grille exclusive to its respective model – from the black matrix of the quintessential Continental GTC model to the chrome floating-diamond design on the Continental GTC Mulliner, created to reflect its pinnacle status.

Please refer to Specifications and Options pages for standard and optional features. Not all options are available on all models and within all markets.



Seeing the light

Look closely into the jewel-like 3D latticework inside the new headlamps and you will notice a striking difference between the different models: the bold, defined edges in the lamps on the Continental GTC Speed and the smoother, more intricate detailing inside those on the Continental GTC Mulliner, for example. Even the welcome animations the lights perform when the engine is switched on reflect the individual character of each car.

These stunning new lights are not just for show. The main beam can be used at all times, with no need to dip it manually. Central sections of the main beam deactivate when oncoming traffic is detected, while continuing to illuminate the road ahead. The lights can even dim automatically to prevent light reflected from road signs dazzling you as you drive. As a result, driving in darkness or overcast conditions is made safer, easier and more pleasurable than ever before.

Please refer to Specifications and Options pages for standard and optional features. Not all options are available on all models and within all markets.

One last look

For many drivers, the most memorable view of your Continental GTC could well be its hind section, as it roars past and disappears into the distance. It's just one reason why the Bentley design team has spent so much time perfecting the rear of the car.

They include stunning new slashed oval rear lamp clusters, with smoked lenses for the Continental GTC Speed and rich red lenses for the other models. The tailpipe finishers – the exquisitely crafted decorative metal coats around the exhaust pipes – receive a similar treatment, with a dark tint applied to the Speed model and bright chrome for the rest of the range.

Please refer to Specifications and Options pages for standard and optional features.
Not all options are available on all models and within all markets.

The ultimate convertible

The new Continental GTC is designed to look and feel incredible – whether you're travelling with the roof up or down.

Available in a choice of stunning colours and fabrics, the four-layer roof is so secure and well-insulated when closed that it's easy to forget you're in a convertible. Yet when the sun comes out, it can be lowered quickly at the touch of a button, even when driving at speeds of up to 30 mph (50 km/h). The roof closure mechanism and low tonneau cover allow for a stylish, streamlined appearance, even when the roof is open.

To keep you comfortable, whatever the temperature, both the driver's seat and front passenger seat include cooling functions, to keep backs and legs comfortable, even on the hottest afternoons. For colder days, each front seat has a heated front armrest and a neck warmer that gently circulates warm air around your neck and shoulders.

Please refer to Specifications and Options pages for standard and optional features.
Not all options are available on all models and within all markets.



Design: Continental GTC

The Continental GTC model makes the most of the sleek curves that characterise the entire range, from the understated black detailing at the front of the car to the muscular haunches and deep red tail lamps at the rear.

The intricately designed headlamps flank a black matrix grille with a chrome surround and centre bar, while a gloss black front splitter and black lower grilles lend the car an undeniable gravitas. The headlamps, meanwhile, feature the stunning new Harmony Crystal interior detailing.

With eye-catching chrome exterior details and 21" ten twin-spoke wheels, it combines refined lines with an inescapable sense of untapped power. This is the Continental GTC: Bentley's grand touring icon in its purest form.

[TO INTERIOR](#)

Please refer to Specifications and Options pages for standard and optional features. Not all options are available on all models and within all markets.



Design: Continental GTC Azure

The Continental GTC Azure takes grand touring comfort to an exquisite new level.

At the front, a new chrome, vertical-vened grille features wider spaces between the vanes than previous Bentley grilles. In combination with the stunning Harmony Crystal headlamps, plus a black front splitter and chrome matrix lower grilles, it ensures the Continental GTC Azure looks like no other car.

The exclusive 22" Azure wheels are available in a choice of two finishes. At the rear of the car, meanwhile, the deep red rear lamps are used to deliver a new welcome animation sequence.

Styled to leave you truly spellbound, the Continental GTC Azure is a case study in luxury design.

[TO INTERIOR](#)

Please refer to Specifications and Options pages for standard and optional features. Not all options are available on all models and within all markets.



Design: Continental GTC Speed

The new Continental GTC Speed is a unique expression of sporting luxury, characterised by its dark, uncompromising road presence.

When the car is unlocked, the exterior lights perform a welcome animation exclusive to this model. In the centre of the car's face, meanwhile, sits a new dark tint matrix grille. More dark tint detailing can be seen elsewhere, from the lower bumper grilles to the sports exhaust finisher at the rear. It results in a more defined, purposeful appearance. The tail-lamps, meanwhile, have been treated with smoke-effect lenses.

Finally, sport sills and a new, body-coloured Styling Specification make the car appear even lower and closer to the road, while the 'Speed' fender badges leave its identity in no doubt.

[TO INTERIOR](#)

Please refer to Specifications and Options pages for standard and optional features. Not all options are available on all models and within all markets.



Design: Continental GTC Mulliner

The new Continental GTC Mulliner makes no secret of its status as the pinnacle of convertible grand tourer design. Complementing its spectacular new form are numerous handcrafted details – not least its sparkling, floating-diamond Mulliner grille.

The painted and polished 22" Mulliner wheels feature self-levelling Bentley 'B' badges, while satin silver mirror caps add further visual interest. Chrome details such as the lower bumper grilles can also be commissioned in black, by adding the Mulliner Blackline Specification – which even applies to the painted sections of the wheels. And when you open the door, one final surprise awaits: Animated Welcome Lamps by Mulliner beam a beautiful animation onto the ground, culminating in a glowing Bentley 'wings' emblem.

[TO INTERIOR](#)

Please refer to Specifications and Options pages for standard and optional features. Not all options are available on all models and within all markets.





PERFORMANCE

Start something powerful

The new Continental GTC offers a choice of two phenomenal hybrid powertrains: the High Performance Hybrid and, in the Speed and Mulliner models, the Ultra Performance Hybrid.

There are also two suites of chassis technology on offer: Bentley Active Chassis, which is available on the Continental GTC and Continental GTC Azure, and Bentley Performance Active Chassis, which is exclusive to the Speed and Mulliner models. Both are built on a suspension system that features all-new twin-valve dampers, offering a range of driving experiences that spans from refined to truly exhilarating.

The physical architecture of the system has also been tailored to optimise performance. The batteries are positioned beneath the boot floor to spread the weight optimally and make the car's centre of gravity lower. Together with the engine's location, low and behind the front axle, this results in close to a 50/50 weight distribution, for incredible dynamic handling. Everything about the Continental GTC has been calibrated for an unrivalled drive.

Please refer to Specifications and Options pages for standard and optional features. Not all options are available on all models and within all markets.



Two V8 hybrid powertrains

High Performance Hybrid

The Continental GTC and the Continental GTC Azure feature the High Performance Hybrid powertrain. Offering a compelling blend of refinement and power, it deploys the electric motor and V8 engine to deliver 930 Nm of torque and a maximum power output of 671 bhp – which translates into acceleration from 0-60 mph in 3.8 seconds and a top speed of 168 mph.

0 to 60 mph

3.8 seconds (0 to 100 km/h: 3.9 seconds)

Top Speed

168 mph (270 km/h)

Power

671 bhp (680 PS)

Torque

930 Nm (686 lb ft)

Ultra Performance Hybrid

The Speed and Mulliner models feature the Ultra Performance Hybrid powertrain. The combined system is tuned to deliver 800 Nm of torque at just 1,000 rpm, ultimately rising to a full 1,000 Nm. This means that when you accelerate from a standing start, you can reach 60 mph in just 3.2 seconds and, thanks to a maximum power output of 771 bhp, a top speed of 177 mph.

0 to 60 mph

3.2 seconds (0 to 100 km/h: 3.4 seconds)

Top Speed

177 mph (285 km/h)

Power

771 bhp (782 PS)

Torque

1000 Nm (738 lb ft)



Figures shown are subject to final certification.



Advanced chassis systems

Every Continental GTC features Bentley Dynamic Ride, an innovative 48-volt active roll control system that continuously adjusts the anti-roll bars to reduce body movement especially when cornering.

Torque vectoring, delivered via an electronic limited-slip differential, slows the wheels on the inside of a turn and increases the speed of those on the outside. This enables the car to hold the road more tightly when cornering hard, for a truly thrilling drive.

All-wheel steering is also standard. At low speeds, it shrinks the car's turning circle. But when driving faster, it steers the rear wheels in the same direction as the front wheels, allowing for smoother lane changes and overtaking.

To ensure that a wide range of driving experiences are available through the different Drive Dynamics modes, all models also feature new twin-valve dampers.

Please refer to Specifications and Options pages for standard and optional features. Not all options are available on all models and within all markets.



State-of-the-art suspension

Every Continental GTC delivers truly incredible handling, in part due to the inclusion of new twin-valve dampers. They make the suspension system more flexible than ever before, allowing for a more refined ride in Comfort mode, for example – even when negotiating roads with potholes or other surface imperfections. Yet crucially, they also allow for greater control and stability in Sport mode – especially when cornering at speed.

On the Continental GTC Speed and Continental GTC Mulliner – both of which feature the Ultra Performance hybrid powertrain – this cutting-edge suspension system allows for a more exhilarating Sport Mode than ever before.

Please refer to Specifications and Options pages for standard and optional features. Not all options are available on all models and within all markets.

Drive electric

If you need to drive into an ultra-low or zero-emission zone, you can make use of the new Continental GTC's ability to drive in electric-only mode – whichever model you choose. This means the V8 petrol engine is completely turned off and the car relies entirely on its powerful electric motor for propulsion, providing up to 190 PS (188 bhp) of power and 450 Nm (332 lb ft) of torque – more than enough power for both urban and highway driving. Emissions, as you might imagine, are zero.

Choose your mode

Like every Bentley, the new Continental GTC gives you access to four different driving modes – Comfort, Bentley, Custom and Sport – each of which can be selected using the Drive Dynamics Control.

While Comfort mode prioritises a smooth ride, the specially calibrated Bentley mode delivers the perfect balance of luxury and exhilaration. Custom mode lets you make your own adjustments to the engine, transmission and suspension and in effect, create your own mode. Sport mode, meanwhile, amplifies the driving experience, making the car noticeably more responsive. In the Continental GTC Speed and Continental GTC Mulliner, this allows for an incredibly thrilling drive, allowing full deployment of those cars' power and torque: 782 PS and 1000 Nm respectively.



INTERIOR





A cabin like no other

The Continental GTC continues to set the standard for grand touring comfort – and nowhere is that more obvious than in the unrivalled design of its cabin.

A wide centre console runs between the four seats, rising smoothly into the fascia and out towards the doors in a flowing shape inspired by the Bentley ‘wings’ emblem.

The fascia panels themselves can be specified with a choice of exquisite single veneers, striking dual veneers or technical finishes. There is a generous range of hides and colour combinations to choose from, featuring new quilting patterns that capture the spirit of each model – and it doesn’t stop at the seats. The handcrafted leather extends to a unique ‘floating’ leather dashboard, which flows seamlessly into the doors, and their sculpted 3D diamond leather panels.

Please refer to Specifications and Options pages for standard and optional features. Not all options are available on all models and within all markets.



Unrivalled craftsmanship

The upholstery inside every Continental GTC is crafted by hand, with highly trained craftsmen and women personally stitching every hide-clad component, from the seats and the door panels to the leatherbound gear lever and steering wheel.

Exclusive new quilting patterns have been created for each model, reflecting the characters of the cars. And in the door panels, another stunning new approach to the craft of leatherwork: three-dimensional diamond hide, its contemporary form representing a stunning blend of the traditional and the new.

It's all part of Bentley's ongoing journey to define – and redefine – the grand touring experience.

Please refer to Specifications and Options pages for standard and optional features. Not all options are available on all models and within all markets.



Speed

Unique finishes

Since the creation of the very first Continental GTC, the interior design team at Bentley has worked with the same aim: to ensure that everything you see and everything you touch should feel like metal, wood or leather.

Today, as ever, the single best way to achieve that aim is to work with as wide a range of those materials as possible. Which is why the surfaces inside every new Continental GTC feature such a stunning range of styles and textures, from centre console finishes such as Diamond Milled Aluminium and Côtes de Genève to dark chrome treatments for controls such as the gear lever or the organ stops for the bullseye air vents.

Some might call it an obsession. To the team at Bentley, however, it's part of what makes the Continental GTC the world's finest convertible grand tourer.

Please refer to Specifications and Options pages for standard and optional features. Not all options are available on all models and within all markets.



A new standard for comfort

The luxurious Front Seat Comfort Specification is included as standard in both the Continental GTC Azure and the Continental GTC Mulliner. It offers a six-setting massage function and 20 different types of adjustments, including headrests, cushions and backrest bolsters, to offer both the driver and front seat passenger a truly indulgent and relaxing experience.

You can also add the Wellness Seating specification. It includes Seat Auto Climate, which monitors the humidity and temperature at the surface of each

front seat and uses a combination of heating and ventilation to respond automatically, keeping you comfortable at all times. It also includes Postural Adjust, which uses a series of air cushions inside each front seat to vary the pressure on your muscles throughout your journey. Although the effect is imperceptible on the lowest settings, it reduces fatigue and stiffness significantly, especially when you are in the vehicle for a long time. As a result, you can get out of the car feeling comfortable, even after the longest of journeys.

A breath of fresh air

A new air conditioning system improves cabin air quality and reduces the number of harmful PM2.5 particles to which you and your passengers might otherwise be exposed.

With the roof closed, the system monitors the atmosphere inside and outside the cabin, while filtering out the pollutants. The interior and exterior readings can be seen on the 'Air Quality' panel on the central touchscreen. It also models CO₂ concentration. Provided levels are judged to be low outside the vehicle, clean fresh air is drawn in. If not, the air inside is recirculated instead.

The system can even detect tunnels using GPS data, switching to recirculation mode before you enter, to avoid air pollution inside the tunnel being drawn inside. When you exit the tunnel, the system switches back, drawing in air from outside again. To save energy, it can even detect whether anyone is sitting in the rear seats. If not, performance in the back of the cabin is automatically reduced.

Please refer to Specifications and Options pages for standard and optional features. Not all options are available on all models and within all markets.

Azure



Digital details.

The digital driver's information panel behind the steering wheel can be displayed with a choice of different graphic design schemes to match your taste. There are four different options on each model, with the Azure, Speed and Mulliner models featuring exclusive new designs.

Please refer to Specifications and Options pages for standard and optional features. Not all options are available on all models and within all markets.



Interior: Continental GTC

Handcrafted, natural materials are on display throughout the cabin of the Continental GTC, from the Nappa leather on the fluted seats to the leather-trimmed gear lever and heated steering wheel. Sections of Dinamica have been applied to the pillars between the windows and the inside of the roof, adding a touch of sporting style – and all this can be commissioned in your choice of five hide colours.

For the hard surfaces on the dash, doors and centre console, rich Crown Cut Walnut veneers are fitted as standard. There is an enormous range of optional alternatives available too, including numerous high-gloss and open-pore woods, plus new gloss-painted 'piano' finishes.

SPECIFICATIONS AND OPTIONS

Please refer to Specifications and Options pages for standard and optional features. Not all options are available on all models and within all markets.



Interior: Continental GTC Azure

The Continental GT Azure offers an elevated sense of comfort and wellbeing. 'Azure' emblems can be seen on the fascia and on each of the four Nappa leather seats. Clad in the luxurious Harmony Diamond Quilt, the seats form part of an interior that can be commissioned in a single-colour or duo-tone colourway, using a choice of 15 hide colours.

Three-dimensional Harmony Diamond Hide has been applied to the doors and the panels beneath the rear windows, while Dinamica is used on the pillars and the roof. You can even add contrast stitching in a wide range of colours.

Open-Pore Crown Cut Walnut veneers are installed as standard, with many more options available. For the switchgear, the Bright Chrome Specification is also standard, giving all key interior components a mirror-like chrome finish. This can be replaced with the Dark Chrome Specification if desired.

[SPECIFICATIONS AND OPTIONS](#)

Please refer to Specifications and Options pages for standard and optional features. Not all options are available on all models and within all markets.



Interior: Continental GTC Speed

The cabin of the Continental GTC Speed features an exclusive new quilting pattern, as well as the stunning new 3D diamond hide on the doors. Dinamica is used on the cabin roof, the pillars, the gear lever and the heated steering wheel – all part of an exclusive Speed hide combination. 'Speed' emblems, meanwhile, can be seen on the headrests and the fascia.

There is a vast range of veneers available, as well as optional finishes such as Engine Turned Aluminium or 'Côtes de Genève' for the centre console. You can opt for dual veneers by Mulliner, or choose from several piano veneers. The optional Dark Chrome Interior Specification, meanwhile, renders all the key, bright chromed components in a darker tint, to complement the exterior.

When you commission a Continental GTC Speed, the standard specification is just the beginning of your journey.

[SPECIFICATIONS AND OPTIONS](#)

Please refer to Specifications and Options pages for standard and optional features. Not all options are available on all models and within all markets.



Interior: Continental GTC Mulliner

Inside the Continental GTC Mulliner, you can choose from a range of sumptuous Nappa hides in eight exclusive three-colour combinations, featuring contrast and accent stitching. New, sustainable olive tanned leather has also been used. With an intricate new Mulliner quilting pattern and embroidered 'Mulliner' seat emblems, this is a truly incredible space.

The Grand Black veneers on the fascia are emblazoned with a representation of the car's silhouette, as well as a chrome 'Mulliner' badge. Piano-painted veneers are now also available in other stunning colours. Alternatively, the fascia and centre console can be treated with natural woods or technical options, including a unique Diamond Milled technical finish for the centre console. The opportunities are virtually limitless.

[SPECIFICATIONS AND OPTIONS](#)

Please refer to Specifications and Options pages for standard and optional features. Not all options are available on all models and within all markets.

TECHNOLOGY

The infotainment screen displays a climate control interface. At the top, it shows the temperature set to 22.5°C and the mode set to AUTO. Below this, the 'Air Quality' section is active, showing a PM2.5 AQI scale from 0 to 250. The scale is currently in the green range (0-50). The screen also shows 'Outside' and 'Inside' air quality indicators. On the right side of the screen, there is a 3D visualization of the car's interior with green dots representing air quality sensors. At the bottom of the screen, there are buttons for 'Re-circ' and 'Ioniser'. The time 10:10 AM is displayed in the top right corner.

Intuitive technology

Every Continental GTC is equipped with the latest driver assistance technology, alongside a suite of Connected Car services, accessible both in-car and remotely, via the My Bentley app. The vehicle can harness infrastructure data to deliver services including real-time traffic information, green traffic light prediction and swarm services from other road users to warn you of potential hazards.

Inside, you can use the new My Bentley App Studio to download your personal choice of applications – which means you don't have to worry about your phone battery draining while you use it for music or navigation, for example. And if you do choose to use a third party navigation app, it will have access to your vehicle's fuel and/or charge levels, for more accurate journey planning.

You can even assign certain frequently-used functions – for example switching navigation announcements on or off – to a custom switch on the steering wheel, for easier access while driving.

Please refer to Specifications and Options pages for standard and optional features. Not all options are available on all models and within all markets.



Effortless manoeuvres

A suite of driver assistance systems makes the Continental GTC easier to drive than ever – especially when parking and manoeuvring at low speeds.

Parking made even easier

The new Intelligent Park Assist* function can identify a suitable parking space, then take control of the steering, pedals and gears while it parks your car. And for occasions when the space is so tight that it would be hard to get in or out of the vehicle once parked, you can use My Bentley Remote Park Assist*, a feature accessed via the My Bentley smartphone app. Simply step out of the car before it parks and tap the button in the app that activates remote parking. Then hold the button down until your car has safely parked itself. Your car will stop moving straight away if you stop holding the button for any

reason. When you return to your car, you can also use Remote Park Assist* to drive it out of the parking space, so you can comfortably get back in.

Assistance when you need it most

When manoeuvring in extremely tight spots or crowded locations, new 3D Surround View allows you to choose the best view available from the four different cameras on the car or, alternatively, see a 3D view of the overall environment around the vehicle.

Manoeuvre Assist provides an extra layer of safety for you and your car, by monitoring the environment in hard-to-navigate spaces and braking automatically if your car looks likely to collide with anything.

*The driver must constantly supervise the manoeuvre and be able to intervene at any time to maintain safety. Please refer to Specifications and Options pages for standard and optional features. Not all options are available on all models and within all markets.



Embrace the open road

Every Continental GTC is equipped with a number of new driving assistance features that make driving long distances more comfortable, such as Adaptive Cruise Assist, Lane Assist and matrix headlamps with High Beam Assist. The Touring Specification provides even more intuitive assistance for long-distance touring.

More comfortable cruising

The specification includes Adaptive Cruise Assist with Lane Guidance, which enables you to take your feet off the pedals when driving on the highway. As long as you keep your hands on the wheel, it will ensure you stay in the centre of your lane and maintain a safe gap between your car and the car in front – even if traffic slows to a stop and starts again.

Going beyond the highway

Predictive Adaptive Cruise Assist takes these functions further, by offering the same convenience when you leave the highway. Using data from the

navigation system, it can continue to safely control your speed, accelerating or braking as necessary to account for speed limit changes, bends in the road, junctions and roundabouts.

Safer driving at night

The night vision camera makes driving in darkness safer – especially in situations where obstacles could be present outside or beyond the headlamp beams. The view from the camera is shown on the driver's information display, highlighting the presence of people or animals in your car's path.

Key information at eye-level

The Touring Specification also includes a Head-Up Display, which projects key driving information into your line of sight, so you never need to take your eyes away from the road.

Please refer to Specifications and Options pages for standard and optional features. Not all options are available on all models and within all markets.



Connect to more

The Continental GTC is equipped with a wide range of Connected Car services*, accessed in-car or remotely via the My Bentley app.

Seamless integration

You can input a destination into the navigation system via the My Bentley smartphone app when you're away from your car, so you're ready to go the moment you get behind the wheel. Real-time traffic information can then dynamically re-route your journey if there is congestion, while Green Traffic Light Prediction will aid smooth passage through junctions.

Your choice of apps

With the new My Bentley App Studio, you can opt to download and use many third party apps for navigation, music, video and more, all within the Bentley infotainment system, accessed via the central touchscreen. This means you can use your preferred navigation system, for example, complete with integrated information from your vehicle, such as fuel and/or charge levels.

A personal experience

In the majority of markets*, your Continental GTC is connected to the cloud, enabling all your personal settings to be stored remotely and accessed by the car as required. This means that even if you move between compatible Bentleys or to a new one, all navigation system destinations, light settings, seat settings and even your favourite radio stations can be downloaded immediately, making them available from the moment you get in.

A warm welcome

You can use the My Bentley app to remotely check the status of your locks, lights, mileage and fuel, as well as your electric-only range. You can also remotely pre-heat or pre-cool the cabin, with My Cabin Comfort. Just select your desired temperature and let the car's climate control system do the rest. You can even opt to heat individual seats, armrests and the steering wheel, or defrost the windows remotely, before your journey begins.

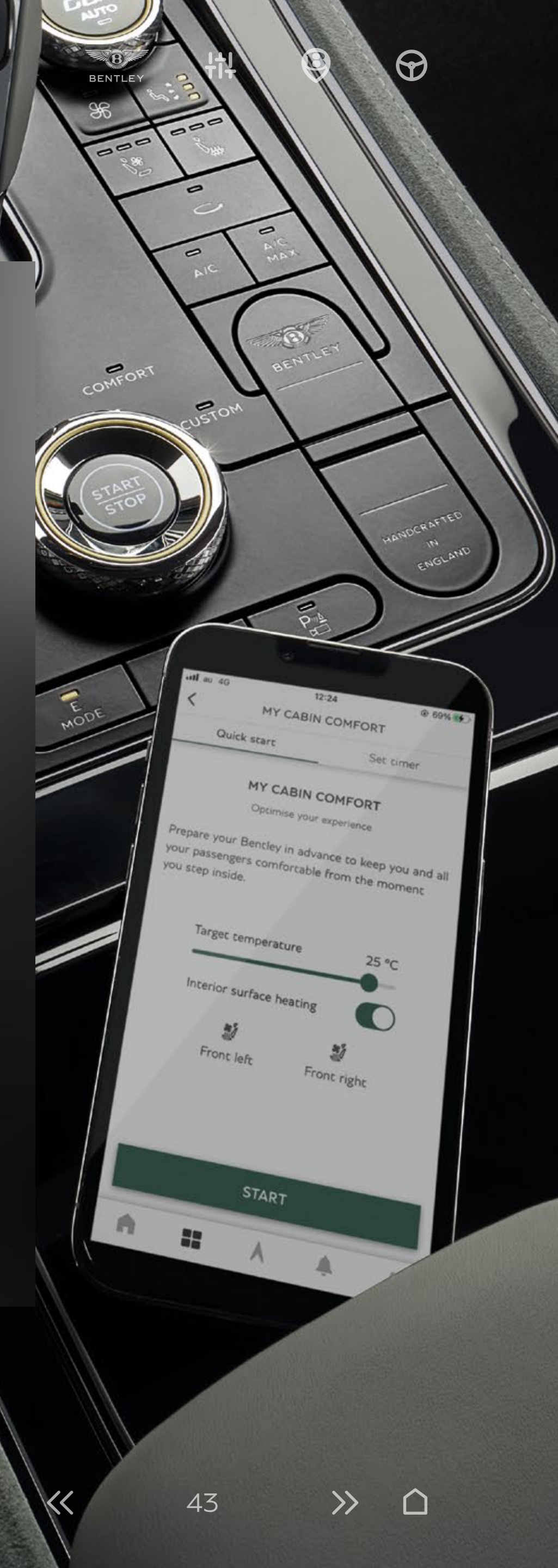
Leading the charge

E-charging allows you to plug your car into a charger and activate the charging process remotely via the app. Just enter the time you plan to set off, and the charging system calculates a charge rate that will give you the highest possible level of charge, just in time for your departure.

You're in safe hands

Emergency features include Private eCall and Roadside Assistance, which automatically connect you to a Bentley Emergency Call Centre or the Bentley Roadside Assistance team in the event of an accident. Furthermore, Theft Alert will notify you if the alarm is activated, giving you complete peace of mind.

Please refer to Specifications and Options pages for standard and optional features. Not all options are available on all models and within all markets. *Vehicle connectivity and service availability varies by market. Please confirm specification with your local certified Bentley Retailer. ** With additional data plan purchased through a mobile network operator. Android is a trademark of Google LLC. Apple CarPlay is a registered trademark of Apple Inc.





Wireless by design

Internet connectivity is available for all occupants throughout, thanks to a built-in Wi-Fi hotspot.*

Content on your phone can be accessed in your car wirelessly, through Android™ Auto or Apple CarPlay®. Online natural speech interaction, meanwhile, lets you activate over 200 car functions by voice, so your hands needn't leave the wheel.

Wireless phone charging is integrated in the stowage area in the centre console, while USB-C ports are also included, for connecting devices that do not support wireless charging.

*With additional data plan purchased through a mobile network operator. Please refer to Specifications and Options pages for standard and optional features. Not all options are available on all models and within all markets.

Incredible audio systems

The Continental GTC can be commissioned with a choice of three audio systems. The Bentley Signature Audio system with 650 Watts is tuned by Bentley, or you can choose the 1,500 Watt Bang & Olufsen audio system with BeoSonic sound control.

For really serious audiophiles, the Naim for Bentley premium audio system packs in 18 separate speakers, each with its own amplification, delivering a mighty 2200 Watts of power. Plus, with two active bass units in the front seats, it really does deliver the ultimate audio experience.



The Bentley Rotating Display

Standard on the Continental GTC Mulliner and optional on all other models, the Bentley Rotating Display is a unique demonstration of Bentley's remarkable approach to technology and craft – a three-sided instrumentation panel that allows you to choose how much modern technology you want to see.

Before you switch the engine on, all you see is a smooth, veneered section of the fascia. On starting the car, however, the entire panel will rotate, offering you the first of two alternatives.

Please refer to Specifications and Options pages for standard and optional features. Not all options are available on all models and within all markets.

The Bentley Rotating Display

On ignition, the 12.3" high-resolution touchscreen rolls into view, allowing you to enjoy the full range of the car's infotainment technology. Designed for unrivalled ease of use, it features a proximity sensor that highlights its onscreen controls as you reach towards it.

The screen itself can be configured to display specific information of your choice, or a combination of up to three windows at once. For example, you could view the navigation map, music controls and your mobile phone call list at the same time.

To see the final face of this three-sided display, however, a further rotation is required.

Please refer to Specifications and Options pages for standard and optional features. Not all options are available on all models and within all markets.

The Bentley Rotating Display

Pressing the 'Screen' button rotates the display one more time. The touchscreen rotates out of view and into its place rolls a veneered fascia panel into which three beautifully crafted analogue dials have been set, complete with polished chrome bezels. This is a feature unique to Bentley, reflecting a more classic style of instrumentation and a bygone age of grand touring.

For an even more minimal driving experience, you can hold the 'Screen' button for two seconds, which rotates the display twice rather than once, allowing you to drive with just the unadorned veneered panel visible. It's up to you.

Please refer to Specifications and Options pages for standard and optional features. Not all options are available on all models and within all markets.

Charging and driving your car

The new hybrid powertrains in the Continental GTC offer five driving modes.

EV Drive: The default mode when you start the car, it offers emission-free, electric-only driving. It can take you up to 50 miles (80 km) without engaging the V8 engine, at speeds of up to 87 mph (140 km/h).

Hybrid: the car will intelligently decide when to employ the engine and when to use electric power alone, for optimum fuel efficiency and emissions. It will base its decisions on your speed and the road type. If you are using the navigation system, the car can automatically switch between electric and petrol power according to your route, preserving battery power for stretches of your journey that might require it, such as a low-emission zone.

Hold: preserves battery charge for later use, relying instead on the power of the V8 engine. While it will employ the electric motor at times, it prioritises a responsive drive over fuel efficiency.

Charge: the engine is used to charge the battery on the move. This makes it less fuel-efficient than Hold, however it can charge the battery up to 80%.

Sport Hold: Putting power and exhilaration first, this is the default when the Drive Dynamics control is set to Sport. It runs the V8 engine at all times, boosted by the electric motor, to unleash the car's full power.

When plugged in at home, the Bentley charging dock will provide a full charge in as little as two hours and 45 minutes. The E-Charging service – accessible via the My Bentley smartphone app or the car's navigation system – helps you find the nearest public chargers when you're on the road.

Please refer to Specifications and Options pages for standard and optional features. Not all options are available on all models and within all markets.

PERSONALISATION

Express yourself

With a host of accessories and styling options allowing you to configure your Continental GTC to your personal taste, it is highly unlikely you will ever see another one like yours.

You can choose from an extensive palette of exterior paint colours, all of which are designed to maintain their brilliance for many years to come. With numerous different wheel designs, hide options, beautiful natural veneers and distinctive trim options, almost every visible feature of your car can be customised to your own specification – even the fabric for the roof.



Exterior colours

Your Continental GTC can be commissioned in a choice of seven exterior colours, as standard.

In addition, you can also choose from an extended range and a palette of Mulliner paints, which together give you a vast range of solid, metallic, satin and pearlescent options to choose from. In all, there are more than 80 colours to explore.

For the ultimate in personalisation, Personal Commission Paint by Mulliner allows you to match a colour that is as unique as you are.

Please refer to Specifications and Options pages for standard and optional features. Not all options are available on all models and within all markets.



Azure

Wheels

Your choice of wheel can subtly or dramatically alter the character of your Continental GTC. That's why there is such a wide range of wheel designs and finishes on offer.

Please refer to Specifications and Options pages for standard and optional features. Not all options are available on all models and within all markets.



Wheels



21" Ten twin-spoke wheel – painted



21" Ten twin-spoke wheel – grey painted and bright machined



22" Ten spoke wheel – silver painted and bright machined



22" Ten spoke wheel – black painted and bright machined



22" Ten spoke wheel – black painted



22" Azure wheel – silver painted and bright machined



22" Azure wheel – black painted



22" Sports alloy wheel – Pale Brodgar Satin



22" Sports alloy wheel – black painted



22" Speed alloy wheel – silver painted



22" Speed alloy wheel – dark tint



22" Speed alloy wheel – black painted



22" Ten swept spoke alloy wheel – grey painted and machined



22" Ten swept spoke alloy wheel – black painted



22" Mulliner alloy wheel – painted and polished with self-levelling badge



22" Mulliner alloy wheel – black painted and polished with self-levelling badge



22" Mulliner alloy wheel – black painted with self-levelling badge

See page 80 for tyre applicability. Please refer to Specifications and Options pages for standard and optional wheels. Not all options are available on all models.

Veneers

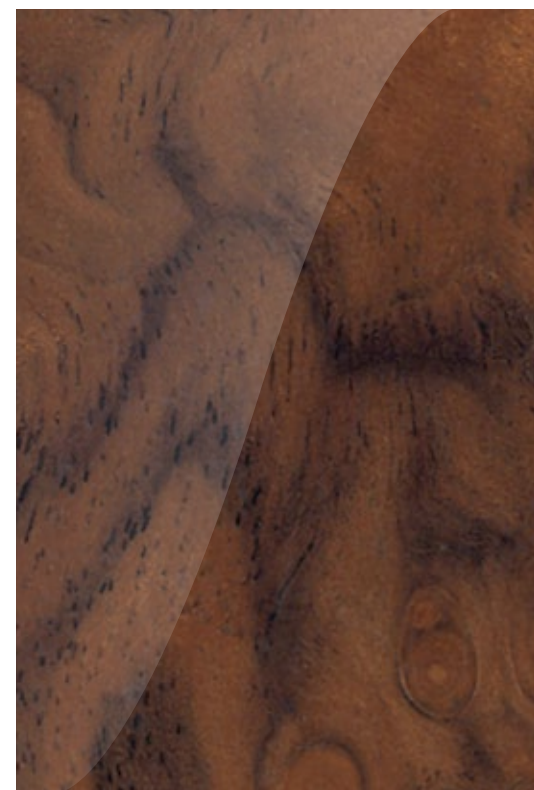
You can choose from several high-gloss and open pore wood veneers, plus several gloss painted piano veneers. Dual veneers by Mulliner see your choice of high-gloss wood combined with Grand Black and an eye-catching chrome pinstripe, separating the two finishes.

You can also opt for technical finishes including Dark Tint Engine Turned Aluminium, Dark Tint Diamond Brushed Aluminium and Carbon Fibre. For the centre console only, options include Diamond Milled Aluminium and Côtes de Genève.

You can even opt to add gleaming metal details to the veneer itself. This stunning, handcrafted finish adds a layer of metal to the veneer during construction. Less than 0.1 millimetre thick, these overlays sit virtually flush to the veneer's surface.

Please refer to Specifications and Options pages for standard and optional features. Not all options are available on all models and within all markets.

Single Veneers



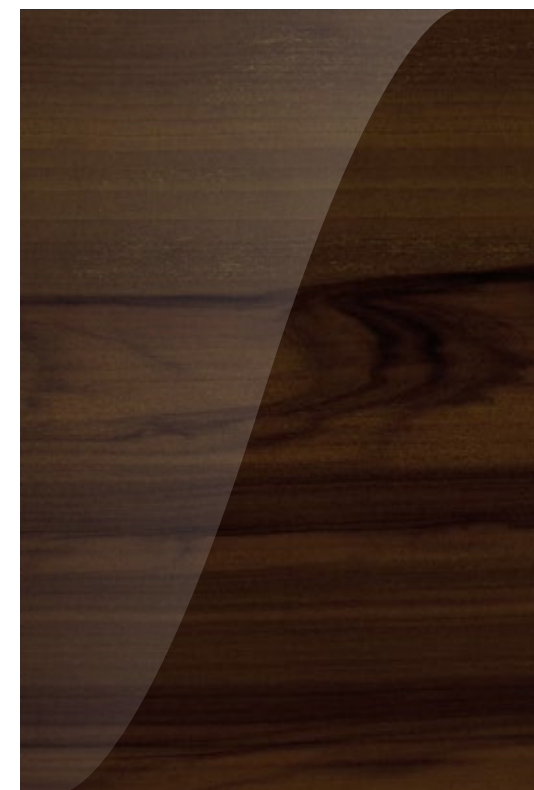
Burr Walnut by Mulliner



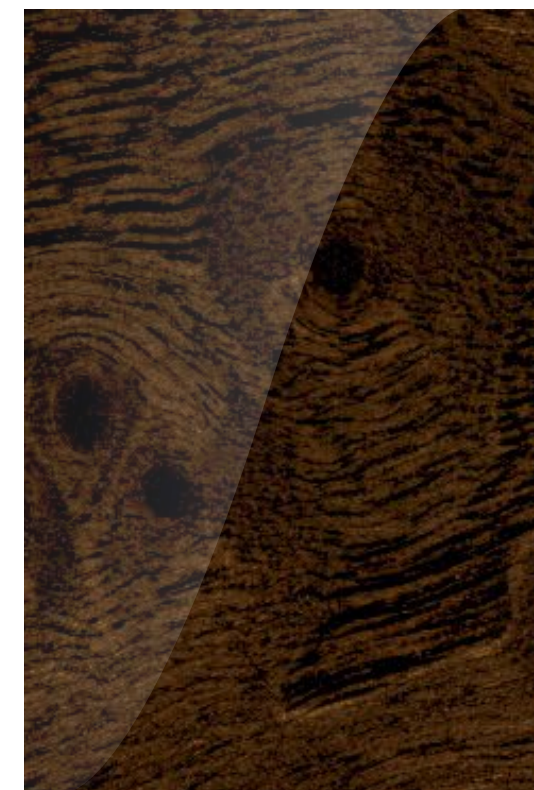
Dark Fiddleback Eucalyptus



Crown Cut Walnut



Liquid Amber



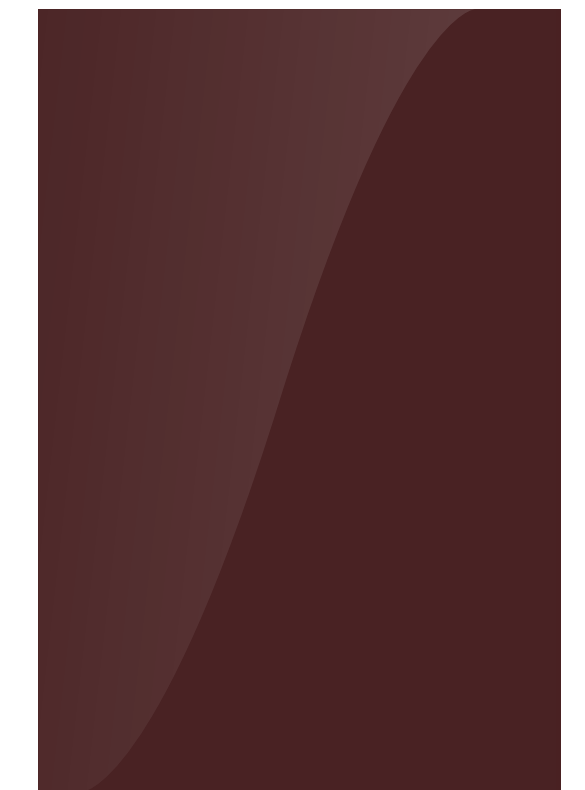
Dark Stained Burr Walnut



Piano Black



Piano Linen by Mulliner



Piano Cricket Ball by Mulliner



Piano Imperial Blue by Mulliner



Piano Burnt Oak by Mulliner



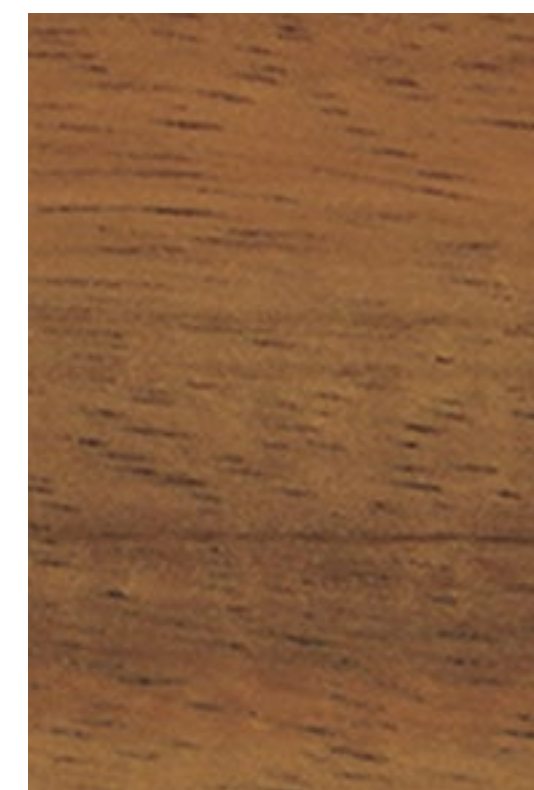
Piano Gravity Grey by Mulliner



Open pore Dark Burr Walnut



Open pore Crown Cut Walnut



Open pore Koa



Grand Black with metal inlay*

Please refer to Specifications and Options pages for standard and optional veneers.
 Not all options are available on all models and within all markets.
 *Applied to fascia and door waistrail. Piano Black to Centre Console and picnic tables (if selected).

Dual Veneers by Mulliner



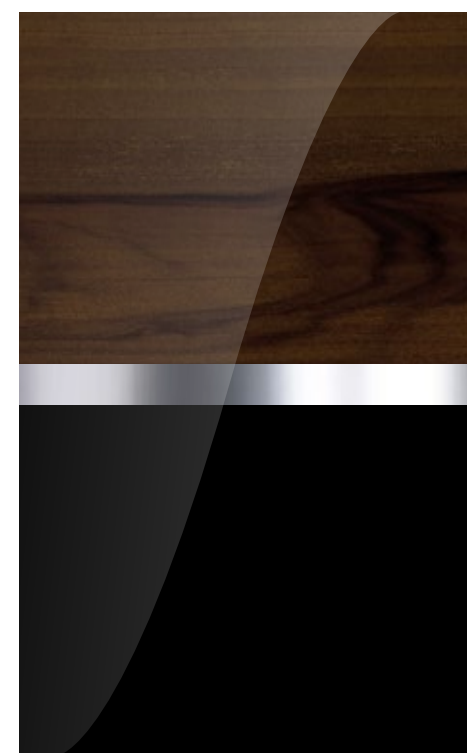
Burr Walnut
& Grand Black



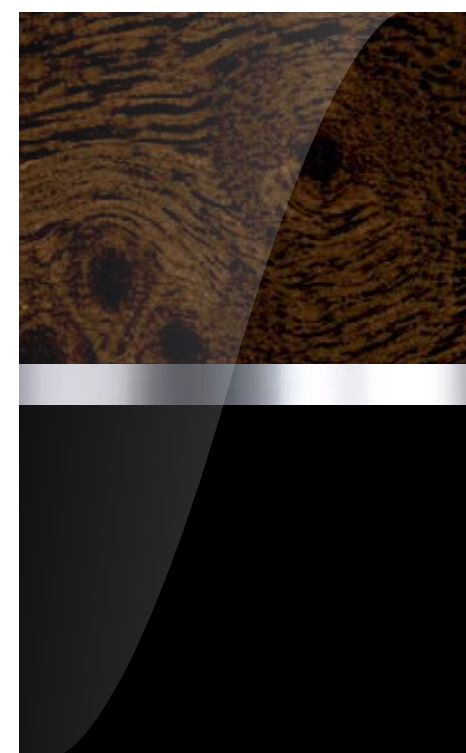
Crown Cut Walnut
& Grand Black



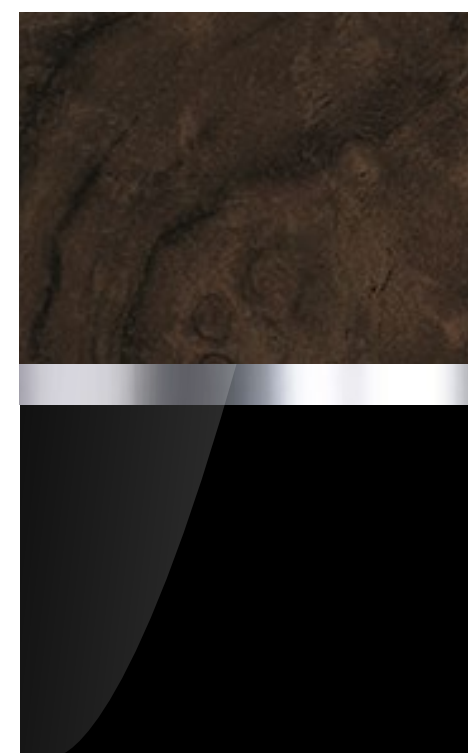
Dark Fiddleback
Eucalyptus
& Grand Black



Liquid Amber
& Grand Black



Dark Stained
Burr Walnut
& Grand Black



Open pore
Dark Burr Walnut
& Grand Black



Open pore Koa
& Grand Black



Open pore
Crown Cut Walnut
& Grand Black

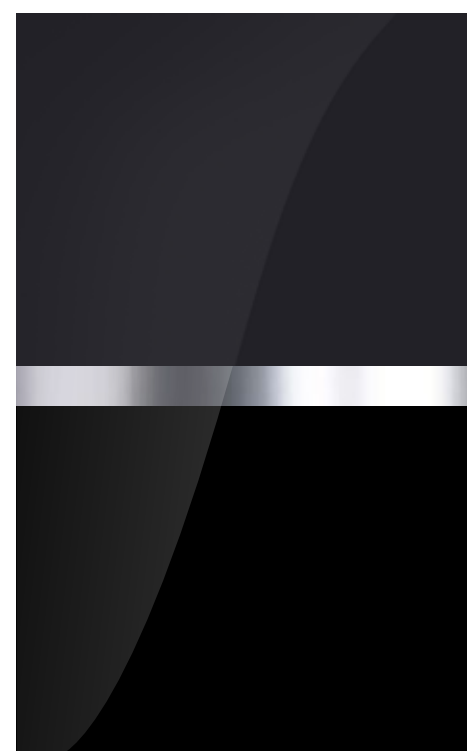


Piano Linen
& Grand Black

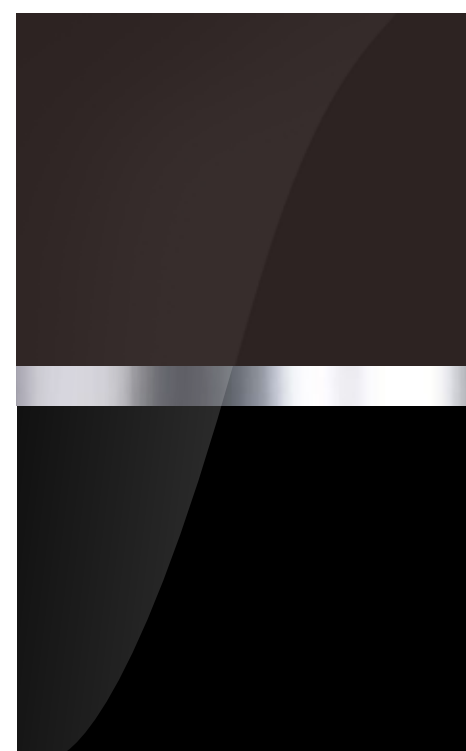
Technical Finishes



Piano Cricket Ball
& Grand Black



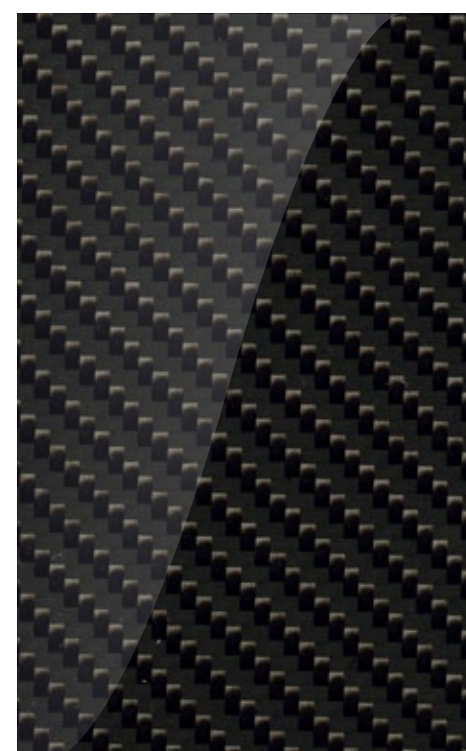
Piano Imperial Blue
& Grand Black



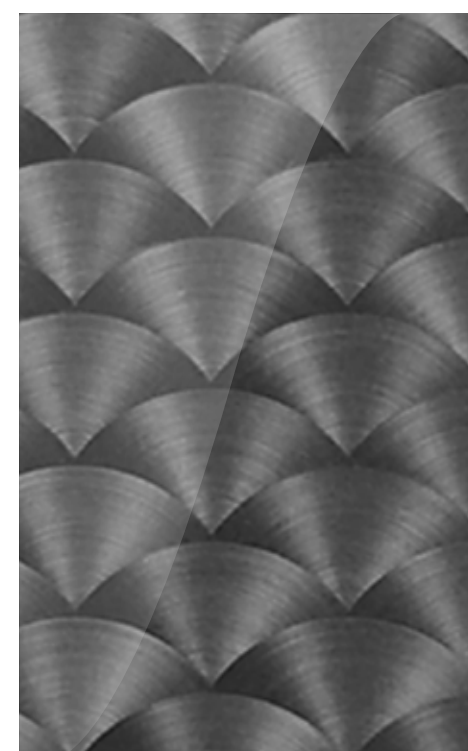
Piano Burnt Oak
& Grand Black



Piano Gravity Grey
& Grand Black



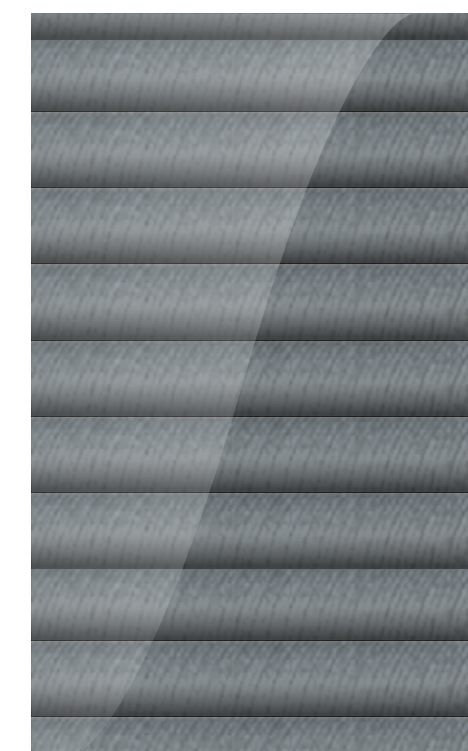
Carbon Fibre*



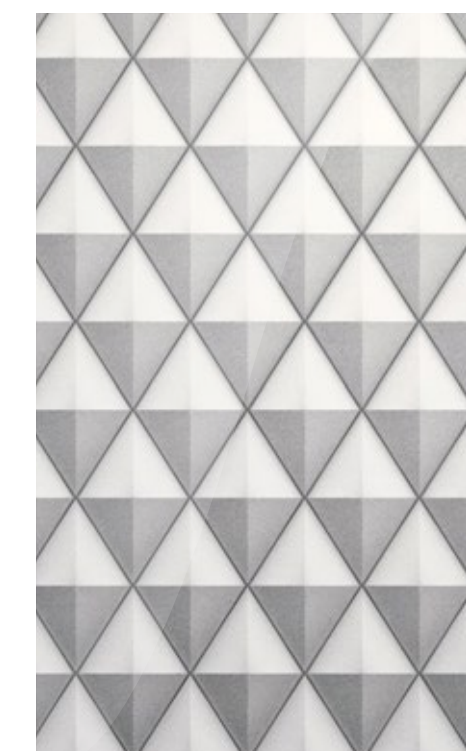
Engine Turned
Aluminium –
Dark Tint*



Diamond Brushed
Aluminium –
Dark Tint*



Côtes de Genève**



Diamond Milled
Aluminium**

Please refer to Specifications and Options pages for standard and optional veneers.
Not all options are available on all models and within all markets.
*Not available on the centre console. **Available on the centre console only.

Hide colours

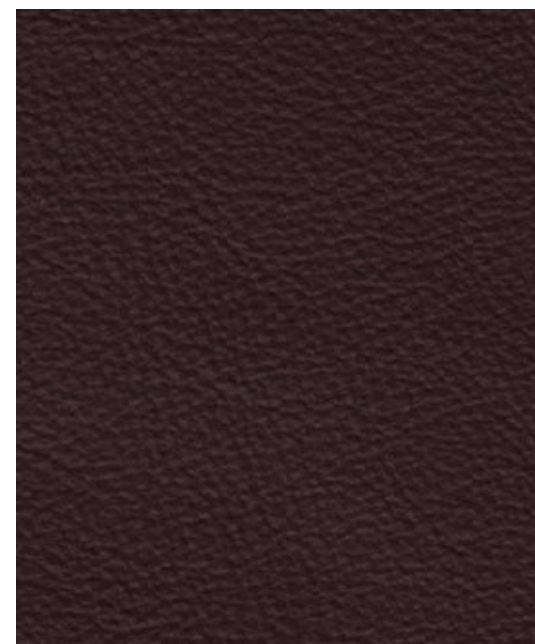
Every inch of the leather upholstery in the Continental GTC is carefully considered – and crafted by hand. From the fascia to the blind stitching, many different areas require a specialised approach. Sections of the hide with high natural elasticity are reserved for curved surfaces like the seats, rather than for piping or flatter areas such as door inserts. The steering wheel is covered in a highly resistant leather to ensure the natural chemicals from the driver's skin are not absorbed, optimising grip, comfort and longevity. And in the Mulliner model, selected areas of the cabin have been upholstered with new olive tanned hides, created using a sustainable production process.

Please refer to Specifications and Options pages for standard and optional features.
Not all options are available on all models and within all markets.

Hide colours



Burnt Oak



Damson



Cricket Ball



Hotspur



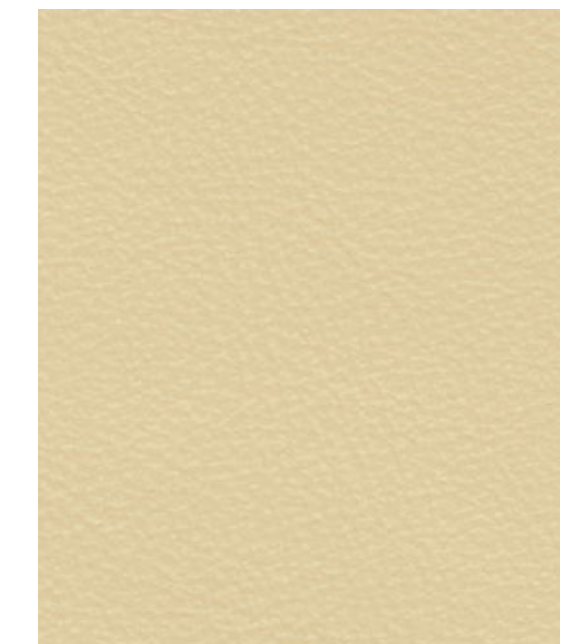
Saddle



Newmarket Tan



Camel



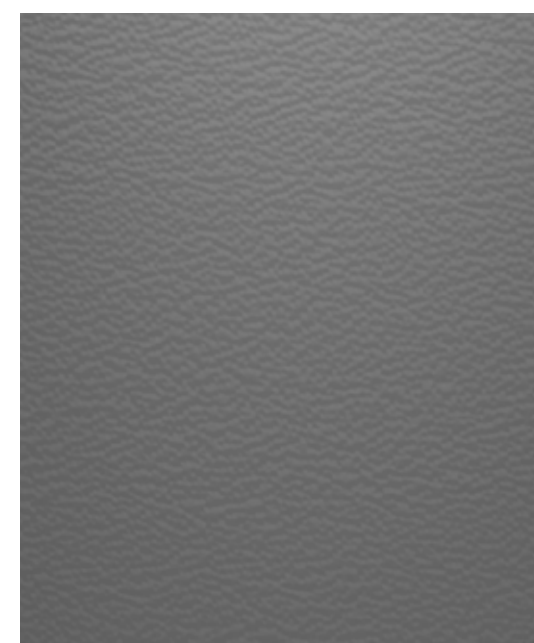
Magnolia



Linen



Portland



Gravity Grey



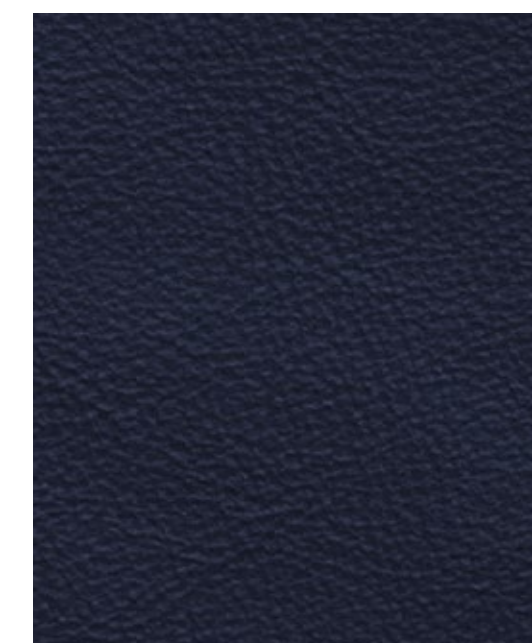
Brunel



Beluga



Cumbrian Green



Imperial Blue

Mulliner Colour Specification accent colours*



Pillar Box Red



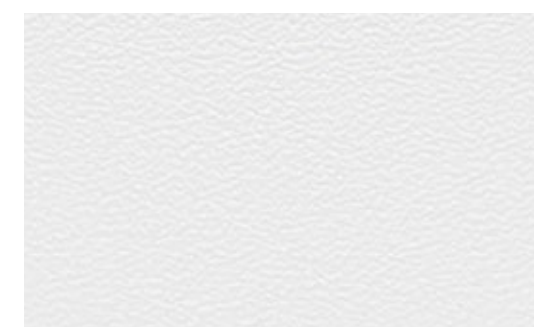
Mandarin



Magenta



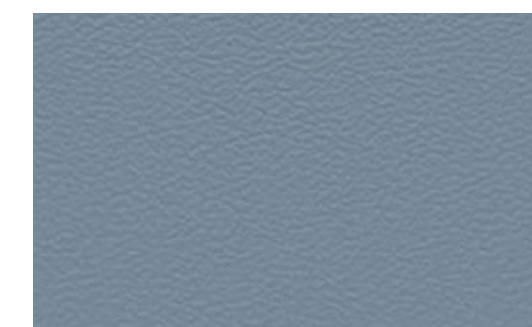
Cherry Blossom



White



Cyber Yellow



Light Blue



Kingfisher

*Available only as part of the Mulliner Colour Specification and as accent colour only. Please refer to Specifications and Options pages for standard and optional hides. Please note, the colours reproduced are for representation purposes only and therefore vary slightly from the actual vehicle.

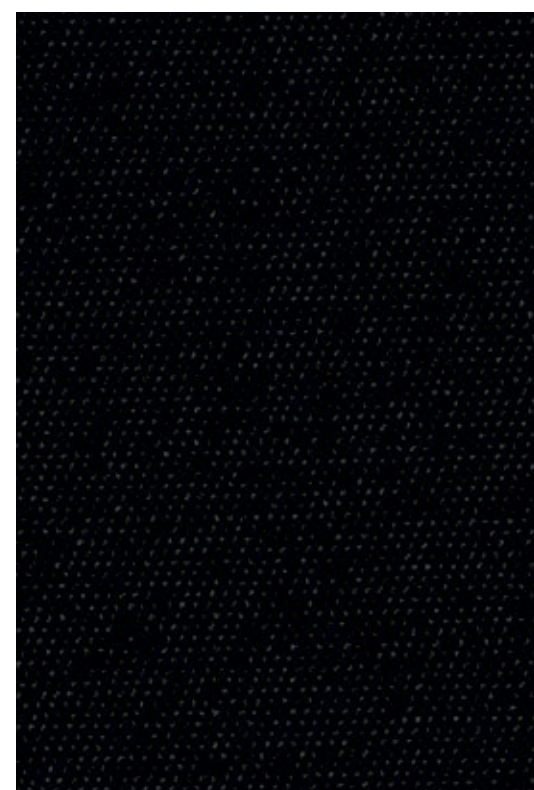


Roof options

The Continental GTC can be commissioned with your choice of seven different roof colours and eight interior roof linings. And for the ultimate in luxury, the roof of the Continental GTC Mulliner features tactile, hand-stitched quilting on the tonneau cover.

Please refer to Specifications and Options pages for standard and optional features. Not all options are available on all models and within all markets.

Roof exterior



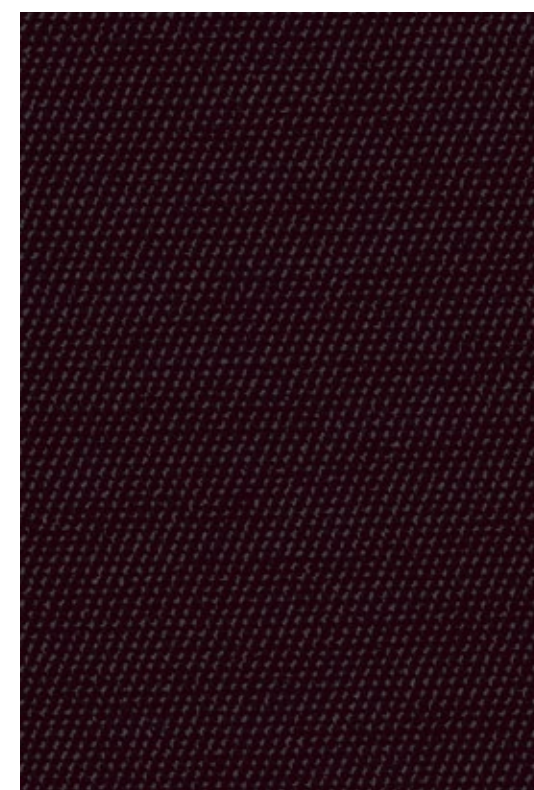
Black



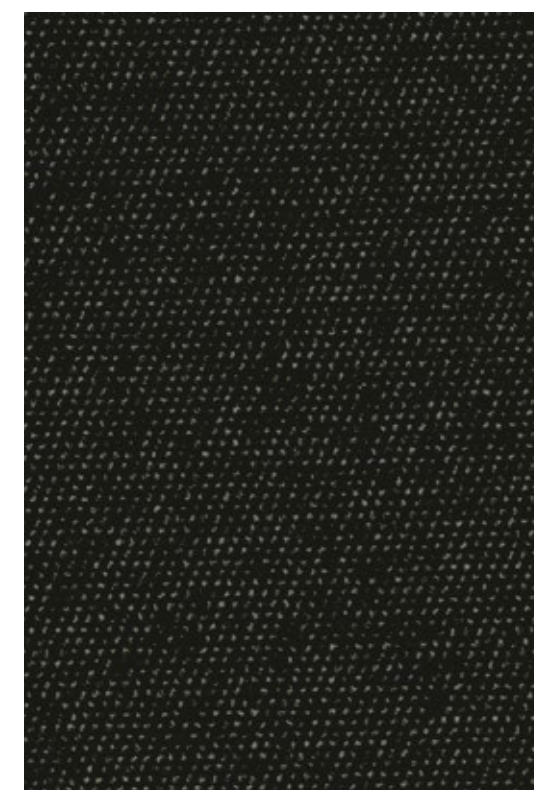
Blue



Grey



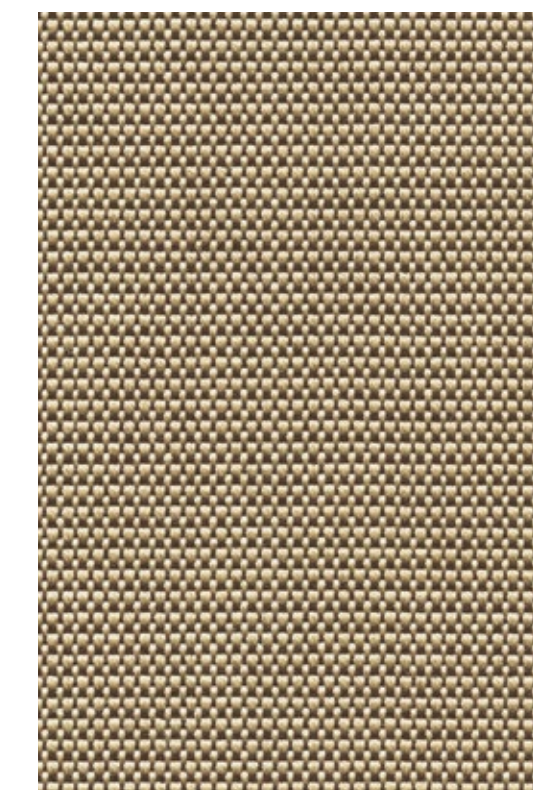
Dark Brown



Dark Grey Metallic



Claret



Tweed

Roof interior



Magnolia



Camel



Light Grey



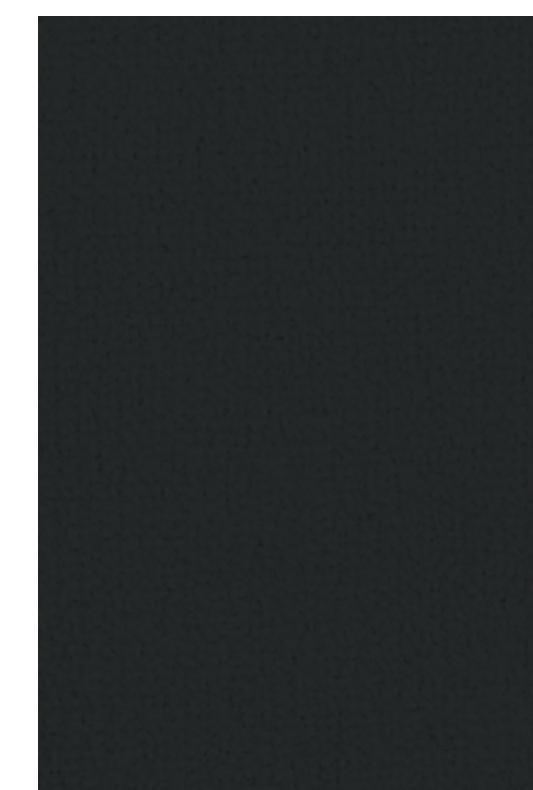
Grey



Blue



Saddle



Beluga



Red

Please refer to Specifications and Options pages for standard and optional roof options. Not all options are available on all models and within all markets. Please note, the colours reproduced are for representation purposes only and therefore vary slightly from the actual vehicle.

Specification packages.

To make it even easier to specify your perfect Continental GTC, Bentley's engineers and designers have created groups of features, from technology packages that make driving easier to collections of exquisitely crafted styling enhancements.

LEATHER SPECIFICATION

Hide replaces Dinamica throughout:

- Seats
- Fascias
- Doors
- Rear quarter panels
- Steering wheel
- Hide trimmed gear lever

COLOUR SPECIFICATION

Opens up a range of additional interior options for the Continental GTC:

- 10 additional hide choices
- Four additional colour combinations

MULLINER COLOUR SPECIFICATION

Eight new colours available for all stitching, piping and accent options.

TOURING SPECIFICATION

Digital assistance features for effortless cruising:

- Adaptive Cruise Assist with Lane Guidance*
- Predictive Adaptive Cruise Assist*
- Night Vision
- Head-Up Display*

BLACKLINE SPECIFICATION

Replaces the exterior brightware with a gloss black trim:

- Black Bentley Wing badges and lettering
- Black door handles
- Black gloss radiator matrix grille with black surround
- Black lower side blades
- Black rear bumper strike and number plate embellishers
- Black headlamp embellishers
- Black side window surrounds
- Dark tint tailpipes

DIAMOND KNURLING SPECIFICATION

An intricate metal treatment applied to additional elements of the fascia and console:

- Knurled bulls-eye air vents
- Knurled dashboard clock bezel
- Knurled organ stops

DARK CHROME INTERIOR SPECIFICATION

Recommended in conjunction with exterior Blackline Specification. Includes but not limited to:

- Door handles and switches
- Speaker grilles
- Bullseye air vents
- Organ stops
- Detailing on drivers instrument panel and steering wheel
- Gear lever
- Centre stack and centre console
- Headrest trim

FRONT SEAT COMFORT SPECIFICATION

The ultimate in Bentley comfort for the driver and front seat passenger:

- Ventilated seats
- Front Seat Neck Warmers
- Multi-mode massage seats
- Adjustable cushion length
- Adjustable side bolsters
- Electric headrests
- Hide-trimmed seat belt buckles
- Heated armrests

WELLNESS SEATING

- Postural Adjust
- Seat Auto Climate

MOOD LIGHTING SPECIFICATION

Multi coloured mood lighting:

- Seven different colours in two different palettes, vibrant or muted
- Matching illuminated 'BENTLEY' treadplates

SMOKER'S SPECIFICATION

- Solid metal ash can in front cabin
- Cigar lighters in front and rear

MULLINER BLACKLINE SPECIFICATION

Gives the exterior Black look to the Mulliner model:

- 22" Mulliner wheel in full black, or black and bright polished
- Side window surrounds in black
- Lower brightware in black
- Beluga mirror cap tops
- Rear brightware in black
- Headlamp and radiator bezels in black

*Regional applicability. Please refer to Specifications and Options pages for standard and optional features. Not all options are available on all models and within all markets.



Luggage set

Among the accessories available for the new Continental GTC is an elegant, five-piece luggage set, crafted in smooth Gravity Grey leather from Italian artisans Pasubio, who are also responsible for the hides used in the car's cabin.

The set comprises three Overnight Bags measuring a generous 50 cm x 24 cm x 25 cm, plus two Accessory Bags measuring 40 cm x 24 cm x 22 cm, so they will fit in the boot perfectly.

Bespoke commissioning with Mulliner

In the early days of motoring, a new car would consist of an engine, drivetrain, four wheels and a set of controls – nothing more. Everything else was created by a coachbuilder, such as Mulliner.

Today, Mulliner works within Bentley to offer a variety of premium features and optional finishes, alongside bespoke customisation services.

For example, the Mulliner team offer an even greater range of colours and finishes for both the exterior and interior of your Bentley, including painted wheels, stone veneers and colour-matched piano veneers. Further examples include personalisation with embroidery for your seats or chrome overlays to your veneers.

On top of that, the Mulliner team can colour match any object you provide to create a unique paint or hide colour. You can even work with them to design truly bespoke content for your car.

To learn more, visit the website or ask your Retailer about the Mulliner Personal Commissioning Guide.

Please refer to Specifications and Options pages for standard and optional features. Not all options are available on all models and within all markets.

Accessories, servicing and maintenance

Genuine Bentley accessories represent an opportunity to personalise your Continental GTC even further. From car covers that fit its sleek form perfectly to Paint Protection Film to preserve its striking looks, there are numerous options available to suit your needs. Moreover, they are all designed specifically by Bentley for your Continental GTC.

Consider this just one reason to bring your vehicle back to an official Bentley Retailer. No one else has the same expertise, the Bentley-trained technicians or access to genuine Bentley parts – not to mention Service and Maintenance products that can give you complete peace of mind, throughout your vehicle's lifetime. There is no better way to keep your Continental GTC close to the impeccable condition it was in, the day it left the factory.

Financing your Continental GTC

Our finance agreements are tailored to ensure you make the most of your investment. While other financiers look only at the circumstances of the customer, Bentley Financial Services creates bespoke packages, based not just on your needs and income, but also on the vehicle you have in mind.

To discover more, please talk to your local Bentley Retailer or visit [BentleyMotors.com](https://www.bentleymotors.com)

The Bentley Collection

The Bentley Collection is a selection of lifestyle products inspired by the distinctive design of our cars. With many items lovingly crafted by highly skilled artisans, the Bentley Collection takes our exciting heritage and vision for the future, and seamlessly weaves it into extraordinary statement pieces.

From unique pieces for the home that elevate your everyday life, to lovingly crafted clothing and accessories designed with a distinctive eye for detail, you can bring Bentley's unrivalled refinement to every aspect of your life.

To view the complete range, please contact your local Bentley Retailer or visit the online store at [BentleyCollection.com](https://www.bentleycollection.com)



The Bentley Experience

Exclusive to customers, these unique tours offer unrivalled opportunities to explore behind the scenes at the Home of Bentley in Crewe and visit the flagship showroom, CW1 House.

Our knowledgeable hosts will share rare insights into the design and engineering process. You will meet the craftspeople who build your car and discover the innovations and techniques they're using to craft a sustainable vision of the future.

Available as an on-site, real-world experience or as a virtual tour, the Bentley Experience offers a truly tailored journey, with your questions answered by our experts along the way. There is simply no better way to understand the passion that goes into every Bentley.



SPECIFICATIONS & OPTIONS

Continental GTC

Continental GTC

STANDARD SPECIFICATION

BRAKES

- Front vented 420 x 40 mm disc brakes with Bentley branded black brake callipers
- Rear vented 380 x 30 mm disc brakes with black brake callipers
- Brake pad wear indicator
- Electronic parking brake with drive away assist

WHEELS

- 21" Ten twin spoke wheel - painted
- 21" Summer tyre with Pirelli Noise Cancellation System
- Bentley 'B' badges to wheel centres
- Electronic Tyre Pressure Monitoring System (TPMS)
- Tyre inflation kit

SUSPENSION

- Bentley Active Chassis with comfort steering and comfort damper calibration
- Two chamber, two valve air suspension with Continuous Damping Control (CDC)
- Electronic Stability Control (ESC) with Traction Control (TCS)/Anti-lock Braking System (ABS)/Electronic Brake Force Distribution (EBD)/Hydraulic Brake Assist (HBA)/ Drag Torque Control (MSR)
- Torque vectoring by electronic differential (eLSD)
- Dynamic ride-height control (auto-adjusts at speed) and ground clearance function
- Bentley Dynamic Ride
- Electronic all-wheel steering
- Drive Dynamics Control
- Eight speed dual clutch transmission
- Active all-wheel drive

EXTERIOR

- Automatically folding four layer insulated fabric roof in three colours: Black, Blue, Grey
- Choice of seven exterior paint colours
- Black matrix grille with chrome surround and centre bar
- Matt black lower bumper grilles

- Gloss black front splitter
- Chrome Bentley wing badges to bonnet and boot
- Chrome 'BENTLEY' lettering on the boot
- Chrome exterior brightware
- Body coloured door mirror caps
- Electrically adjustable door mirrors with heating, power fold, auto-dimming, memory and dip on reverse functions
- Illuminated 'Bentley' sill and stainless steel treadplates with 'Handcrafted in Crewe, England'
- Full LED matrix headlamps with high-beam assist and welcome and coming home animation
- Full LED tail lamps with red lens and welcome and coming home animation
- Acoustic, heat-insulating, front screen
- Acoustic side glass with IR barrier*
- Heated rear screen
- Chrome slashed oval exhaust finishers
- Rain-sensing windscreen wipers
- Hands free boot
- Power latches to the doors and boot
- Keyless entry and ignition
- Acoustic Vehicle Alerting System (AVAS)
- Hidden antennae
- Child seat anchor for child seat system ISOFIX in the rear seats
- Single front armrest (with fore/aft slide) – with stowage inc. wireless phone charging, 12 V socket and two USB-C charging points
- Stowage to front doors, centre console and under centre armrest
- Single tone, three-spoke, hide trimmed heated steering wheel
- Steering wheel mounted gearshift paddles
- Electric tilt-and-reach adjustment steering column with memory and easy-entry functions
- Standard foot pedals
- Leather trimmed gear lever
- Crown Cut Walnut veneer
- Metal bulls-eye vents with organ stops
- Bentley analogue clock with plain bezel
- Lockable glove box
- Deep pile cabin carpets
- Standard carpet overmats to the front
- Boot carpet in Beluga
- Two cup holders to the front centre console
- Sun visors with illuminated vanity mirrors
- Auto-dimming rear-view mirror
- Footwell illumination and ambient lighting
- Advanced air filtration and display with particle matter sensor
- Multi-zone automatic climate control
- Air ioniser
- Boot lid down lighters
- 12 V socket in boot
- Keybox

INTERIOR

- Four occupant seating positions
- Nappa leather interior on seats, doors and lower cabin – five colours
- Five interior roof colours: Beluga, Blue, Grey, Red, Saddle
- Hide trimmed, straight fluted style seat design
- Monotone interior colour combination
- Diamond knurling to rotary switches and column stalks
- Electric 12-way front seats, heated with two memory functions
- Two rear seats with centre stowage inc. 12 V socket and two USB-C charging points
- Black seat belt buckles
- Driver and front passenger airbag with front passenger airbag deactivation
- Side airbags

TECHNOLOGY

- Infotainment system with 12.3" high-resolution capacitive touchscreen display. Proximity sensors and hard key controls. Digital radio, HDD-Navigation, advance music interface (AMI), Bluetooth (A2DP) and Wi-Fi (uPnP) streaming
- Navigation – featuring text-to-speak, voice destination entry and 3D building display
- Wireless Apple CarPlay®*
- Wireless Android Auto*

- 60 GB solid-state drive (10 GB available user space)
- 4G LTE telephone module*
- Bentley Signature Audio
- Bluetooth and Wi-Fi audio streaming

DRIVER ASSISTANCE SYSTEMS

- Driver Assist Environmental Display
- Adaptive Cruise Assist*
- Lane Assist
- Blind Spot Warning
- Adaptive brake lights*
- Bentley Safeguard Plus*
- Swerve Assist*
- Bentley Safeguard Rear*
- Multi-collision brake*
- Emergency Assist
- Reversing camera with graphic screen representation
- 3D Surround View
- Front and Rear Park Distance Control
- Intelligent Park Assist†
- City Assist
- Manoeuvre Assist
- Turn Assist*
- Pedestrian Warning
- Extended and crash-active pedestrian protection*
- Reversing Traffic Warning
- Exit Warning
- Alarm and immobiliser
- Bentley GPS tracking system*

CONNECTED CAR SERVICES

- Traffic Sign Recognition*
- POI (search)*
- Online real time traffic information*
- Remote Park Assist†
- My Cabin Comfort

†The driver must constantly supervise the manoeuvre and be able to intervene at any time to maintain safety. See the full details of these specifications on page 62. NCO = No Cost Option. *Regional applicability.

Continental GTC (cont.)

- Online Destination Import
- My Car Statistics
- My Battery charge
- My Bentley App Studio
- Find My Car
- My Car Status
- Activate Lights & Horn
- Lock My Car
- Perimeter Alert
- Speed Alert
- Curfew Alert
- Valet Alert
- Green Traffic Light Prediction (subject to infrastructure availability)
- Theft Alert
- Map update over the air
- Satellite Maps
- Local Hazard Information
- Online search
- Personal navigation assistant (China)
- Roadside assistance call
- Private e-Call*
- News
- Weather
- WiFi hotspot

SPECIFICATION PACKAGES

- City Specification

OPTIONAL SPECIFICATION

BRAKES

- Front and rear brake callipers in red, with Bentley branding to front callipers
- Front and rear brake callipers in Mandarin, with Bentley branding to front callipers
- Ceramic brakes with black callipers
- Ceramic brakes with red callipers

WHEELS

- 21" Ten twin-spoke wheel - grey painted and bright machined
- 22" Ten spoke wheel - silver painted and bright machined
- 22" Ten spoke wheel - black painted and bright machined
- 22" Ten spoke wheel - black painted
- Self levelling wheel badges by Mulliner
- Winter wheels and tyres
- Summer tyres*
- Temporary use spare wheel for home*

EXTERIOR

- Choice of four additional exterior roof colours: Dark Brown, Claret, Dark Grey Metallic and Tweed
- Wind deflector
- Additional exterior paint colours
- Jewel fuel filler and oil caps

INTERIOR

- Choice of four additional duo tone colour combinations and ten additional hide colours, in conjunction with the Colour Specification
- Additional veneers: Burr Walnut by Mulliner, Dark Fiddleback Eucalyptus, Dark Stained Burr Walnut, Liquid Amber, open pore Crown Cut Walnut, open pore Dark Burr Walnut, open pore Koa, Piano Black
- Piano veneers: Linen, Cricket Ball, Imperial Blue, Burnt Oak, Gravity Grey By Mulliner
- Unique centre console finish in 'Côtes de Genève'

- Choice of dual veneers by Mulliner applied to the upper fascia, with Grand Black veneer on the lower fascia and centre console
- Carbon Fibre to fascia and door waistrails, with Piano Black on the centre console
- Engine Turned Aluminium to centre console – Dark Tint
- Engine Turned Aluminium to fascia and door waistrails – Dark Tint
- Diamond Brushed Aluminium to fascia and door waistrails - Dark Tint
- Chrome or coloured-matched pinstripe to fascia and door waistrails
- Diamond knurling to metal bulls-eye vents, organ stops and Bentley analogue clock
- Neck warmer
- Heated front armrest
- Embroidered Bentley emblems to headrests
- Deep pile overmats to front
- Contrast binding to deep pile overmats (front)
- Contrast stitching to seat and cabin trim including steering wheel stitching
- Seat piping with contrast stitching including steering wheel stitching
- Hand cross stitching by Mulliner
- Heated, duo-tone, 3-spoke, hide-trimmed steering wheel
- Heated, duo-tone, 3-spoke indented hide-trimmed wheel
- Heated, single tone, 3-spoke indented hide-trimmed steering wheel
- Steering wheel vertical spokes and gear lever in contrast colour by Mulliner
- Contrast seatbelts by Mulliner
- Sports pedals

CONVENIENCE

- Remote controlled garage door opener*
- Valet key
- First aid kit and warning triangle
- Tool kit and jack*

TECHNOLOGY

- Bentley Rotating Display
- Naim for Bentley premium audio system
- Bang & Olufsen for Bentley audio system
- LED Welcome Lamps by Mulliner
- Animated Welcome Lamps by Mulliner
- Head-Up Display*

SPECIFICATION PACKAGES

- Blackline Specification
- Colour Specification
- Dark Chrome Interior Specification
- Diamond Knurling Specification**
- Front Seat Comfort Specification
- Wellness Seating
- Mood Lighting Specification
- Mulliner Colour Specification
- Smoker's Specification
- Touring Specification*

See the full details of these specifications on page 62.

NCO = No Cost Option. *Regional applicability.

**Not available with Dark Chrome Interior Specification.

Continental GTC Azure

STANDARD SPECIFICATION

BRAKES

- Front vented 420 x 40 mm disc brakes with Bentley branded black brake callipers
- Rear vented 380 x 30 mm disc brakes with black brake callipers
- Brake pad wear indicator
- Electronic parking brake with drive away assist

WHEELS

- 22" Azure wheel – silver painted and bright machined
- 22" All seasons tyre with Pirelli Noise Cancellation System
- Bentley 'B' badges to wheel centres
- Electronic Tyre Pressure Monitoring System (TPMS)
- Tyre inflation kit

SUSPENSION

- Bentley Active Chassis with comfort steering and comfort damper calibration
- Two chamber, two valve air suspension with Continuous Damping Control (CDC)
- Electronic Stability Control (ESC) with Traction Control (TCS)/Anti-lock Braking System (ABS)/ Electronic Brake Force Distribution (EBD)/ Hydraulic Brake Assist (HBA)/ Drag Torque Control (MSR)
- Torque vectoring by electronic differential (eLSD)
- Dynamic ride-height control (auto-adjusts at speed) and ground clearance function
- Bentley Dynamic Ride System
- Electronic all-wheel steering
- Drive Dynamics Control
- Eight speed dual clutch transmission
- Active all-wheel drive

EXTERIOR

- Automatically folding four layer insulated fabric roof in three colours: Black, Blue, Grey
- Choice of seven exterior paint colours
- Black gloss matrix grille with chrome surround and chrome vertical vanes

- Bright chrome matrix grille to lower bumper apertures
- Beluga painted front splitter
- 'Azure' exterior fender badges
- Jewel fuel filler and oil caps
- Panoramic glass sunroof
- Chrome Bentley wing badges to bonnet and boot
- Chrome 'BENTLEY' lettering on the boot
- Chrome exterior brightware
- Body coloured door mirror caps
- Electrically adjustable door mirrors with heating, power fold, auto-dimming, memory and dip on reverse functions
- Illuminated 'BENTLEY' sill and 'AZURE' stainless steel treadplates with 'Handcrafted in Crewe, England'
- Full LED matrix headlamps with high-beam assist and welcome and coming home animation
- Full LED tail lamps with red lens and 'wellness' welcome and coming home animation
- Acoustic, heat-insulating, front screen
- Acoustic side glass with IR barrier*
- Heated rear screen
- Chrome slashed oval exhaust finishers
- Rain-sensing windscreen wipers
- Hands free boot
- Power latches to the doors and boot
- Keyless entry and ignition
- Acoustic Vehicle Alerting System (AVAS)
- Hidden antennae

INTERIOR

- Five interior roof colours: Beluga, Blue, Grey, Red, Saddle
- Four occupant seating positions
- Nappa leather interior on seats and lower cabin – 15 colours
- Harmony Diamond Quilt to seats
- 'Azure' embroidered seat emblems
- Contrast stitching to seat and cabin trim including steering wheel
- Three dimensional Harmony diamond hide to door casings and rear quarter panels

- Choice of monotone or four duo-tone colour combinations in 15 hide colours
- 'Azure' fascia badge
- Diamond knurling to rotary switches and column stalks
- Front seats – electric 24-way adjustment with heating, ventilation, massage, adjustable bolster function and two memory positions
- Two rear seats with centre stowage inc. 12 V socket and two USB-C charging points
- Seatbelts colour-matched to hide colour, with hide-trimmed buckles
- Driver and front passenger airbag with front passenger airbag deactivation
- Side airbags
- Child seat anchor for child seat system ISOFIX in the rear seats
- Single front armrest (with fore/aft slide) – with stowage inc. wireless phone charging, 12 V socket and two USB-C charging points
- Stowage to front doors, centre console and under centre armrest
- Single tone, three-spoke, hide trimmed heated steering wheel
- Steering wheel mounted gearshift paddles
- Electric tilt-and-reach adjustment steering column with memory and easy-entry functions
- Sports foot pedals
- Leather trimmed gear lever
- Open Pore Crown Cut Walnut veneer
- Metal bulls-eye vents with organ stops
- Bentley analogue clock with smooth bezel
- Lockable glove box
- Deep pile carpets – matched to main or secondary hide
- Deep pile overmats to front
- Boot carpet in Beluga
- Two cup holders to the front centre console
- Sun visors with illuminated vanity mirrors
- Auto dimming interior rear view mirror
- Footwell illumination and ambient lighting
- Advanced air filtration and display with particle matter sensor
- Multi-zone automatic climate control

- Air ioniser
- Boot lid down lighters
- 12 V socket in boot
- Keybox

TECHNOLOGY

- Infotainment system with 12.3" high-resolution capacitive touchscreen display. Proximity sensors and hard key controls. Digital radio, HDD-Navigation, advance music interface (AMI), Bluetooth (A2DP) and Wi-Fi (uPnP) streaming
- Navigation – featuring text-to-speak, voice destination entry and 3D building display
- Wireless Apple CarPlay®*
- Wireless Android Auto*
- 60 GB solid-state drive (10 GB available user space)
- 4G LTE telephone module*
- Bentley Signature Audio
- Bluetooth and Wi-Fi audio streaming

DRIVER ASSISTANCE SYSTEMS

- Driver Assist Environmental Display
- Adaptive Cruise Assist with Lane Guidance*
- Predictive Adaptive Cruise Assist*
- Night Vision
- Head-Up Display*
- Lane Assist
- Blind Spot Warning
- Adaptive brake lights*
- Bentley Safeguard Plus*
- Swerve Assist*
- Bentley Safeguard Rear*
- Multi-collision brake*
- Emergency Assist
- Reversing camera with graphic screen representation
- 3D Surround View
- Front and Rear Park Distance Control
- Intelligent Park Assist[†]

[†]The driver must constantly supervise the manoeuvre and be able to intervene at any time to maintain safety. See the full details of these specifications on page 62. NCO = No Cost Option. *Regional applicability.

Continental GTC Azure (cont.)

- City Assist
- Manoeuvre Assist
- Turn Assist*
- Pedestrian Warning
- Extended and crash-active pedestrian protection*
- Reversing Traffic Warning
- Exit Warning
- Alarm and immobiliser
- Bentley GPS tracking system*

CONNECTED CAR SERVICES

- Traffic Sign Recognition*
- POI (search)*
- Online real time traffic information*
- Remote Park Assist†
- My Cabin Comfort
- Online Destination Import
- My Car Statistics
- My Battery charge
- My Bentley App Studio
- Find My Car
- My Car Status
- Activate Lights & Horn
- Lock My Car
- Perimeter Alert
- Speed Alert
- Curfew Alert
- Valet Alert
- Green Traffic Light Prediction (subject to infrastructure availability)
- Theft Alert
- Map update over the air
- Satellite Maps
- Local Hazard Information
- Online search
- Personal navigation assistant
- Roadside assistance call
- Private e-Call*

- News
- Weather
- WiFi hotspot

SPECIFICATION PACKAGES

- Colour Specification
- Front Seat Comfort Specification
- Mood Lighting Specification
- Touring Specification
- Wellness Seating – Front

OPTIONAL SPECIFICATION

BRAKES

- Front and rear brake callipers in red, with Bentley branding to front callipers
- Front and rear brake callipers in Mandarin, with Bentley branding to front callipers
- Ceramic brakes with black callipers
- Ceramic brakes with red callipers

WHEELS

- 21" Ten twin-spoke wheel - grey painted and bright machined
- 22" Azure wheel - black painted
- 22" Ten spoke wheel - silver painted and bright machined
- 22" Ten spoke wheel - black painted and bright machined
- 22" Ten spoke wheel - black painted
- Self levelling wheel badges by Mulliner
- Winter wheels and tyres
- Summer tyres*
- Temporary use spare wheel for home*

EXTERIOR

- Choice of four additional exterior roof colours: Dark Brown, Claret, Dark Grey Metallic and Tweed
- Wind deflector
- Additional exterior paint colours

INTERIOR

- Additional veneers: Burr Walnut by Mulliner, Dark Fiddleback Eucalyptus, Dark Stained Burr Walnut, Liquid Amber, open pore Crown Cut Walnut (NCO), open pore Dark Burr Walnut (NCO), open pore Koa (NCO), Piano Black
- Piano veneers: Linen, Cricket Ball, Imperial Blue, Burnt Oak, Gravity Grey by Mulliner
- Unique centre console finish in 'Côtes de Genève'
- Choice of dual veneers by Mulliner applied to the upper fascia, with Grand Black veneer on the lower fascia and centre console
- Carbon Fibre to fascia and door waistrails, with Piano Black on the centre console
- Engine Turned Aluminium to centre console – Dark Tint
- Engine Turned Aluminium to fascia and door waistrails – Dark Tint
- Diamond Brushed Aluminium to fascia and door waistrails - Dark Tint
- Chrome or coloured-matched pinstripe to fascia and door waistrails
- Diamond knurling to metal bulls-eye vents, organ stops and Bentley analogue clock
- Embroidered Bentley emblems to headrests
- Contrast binding to deep pile overmats (front)
- Seat piping with contrast stitching including steering wheel
- Hand cross stitching by Mulliner
- Heated, duo-tone, 3-spoke, hide-trimmed steering wheel
- Heated, duo-tone, 3-spoke indented hide-trimmed wheel
- Heated, single tone, 3-spoke indented hide-trimmed steering wheel
- Steering wheel vertical spokes and gear lever in contrast colour by Mulliner
- Contrast seatbelts by Mulliner

CONVENIENCE

- Remote controlled garage door opener*
- Valet key
- First aid kit and warning triangle
- Tool kit and jack*

TECHNOLOGY

- Bentley Rotating Display
- Naim for Bentley premium audio system
- Bang & Olufsen for Bentley audio system
- LED Welcome Lamps by Mulliner
- Animated Welcome Lamps by Mulliner
- Head-Up Display*

SPECIFICATION PACKAGES

- Blackline Specification
- Dark Chrome Interior Specification
- Diamond Knurling Specification††
- Mulliner Colour Specification
- Smoker's Specification

See the full details of these specifications on page 62.
NCO = No Cost Option. *Regional applicability.
††Not available with Dark Chrome Interior Specification.

Continental GTC Speed

STANDARD SPECIFICATION

BRAKES

- Front vented 420 x 40 mm disc brakes with Bentley branded red brake callipers
- Rear vented 380 x 30 mm disc brakes with red brake callipers
- Brake pad wear indicator
- Electronic parking brake with drive away assist

WHEELS

- 22" Speed alloy wheel – silver painted
- 22" Summer tyre with Pirelli Noise Cancellation System
- Bentley 'B' badges to wheel centres
- Electronic Tyre Pressure Monitoring System (TPMS)
- Tyre inflation kit

SUSPENSION

- Bentley Performance Active Chassis with sports steering and sports damper calibration
- Two chamber, two valve air suspension with Continuous Damping Control (CDC)
- Electronic Stability Control (ESC) with Traction Control (TCS)/Anti-lock Braking System (ABS)/ Electronic Brake Force Distribution (EBD)/ Hydraulic Brake Assist (HBA)/ Drag Torque Control (MSR)
- Torque vectoring by electronic differential (eLSD)
- Dynamic ride-height control (auto-adjusts at speed) and ground clearance function
- Bentley Dynamic Ride
- Electronic all-wheel steering
- Drive Dynamics Control
- Launch Control
- Eight speed dual clutch transmission
- Active all-wheel drive

EXTERIOR

- Automatically folding four layer insulated fabric roof in three colours: Black, Blue, Grey
- Choice of seven exterior paint colours
- Dark tint radiator matrix grille with dark tint surround
- Dark tint lower bumper grille

- Dark tint brightware
- Speed sport sills
- 'Speed' fender badges
- Chrome Bentley wing badges to bonnet and boot
- Chrome 'BENTLEY' lettering on the boot
- Jewel fuel filler and oil caps
- Body coloured door mirror caps
- Electrically adjustable door mirrors with heating, power fold, auto-dimming, memory and dip on reverse functions
- Illuminated 'BENTLEY' sill and stainless steel 'Speed' treadplates with 'Handcrafted in Crewe, England'
- Full LED matrix headlamps with high-beam assist and Speed welcome and coming home animation
- Full LED tail lamps with smoked lens and Speed welcome and coming home animation
- Acoustic, heat-insulating, front screen
- Acoustic side glass with IR barrier*
- Heated rear screen
- Sports exhaust
- Slashed oval exhaust finishers in dark tint chrome
- Rain-sensing windscreen wipers
- Hands free boot
- Power latches to the doors and boot
- Keyless entry and ignition
- Acoustic Vehicle Alerting System (AVAS)
- Hidden antennae
- Electric 12-way front seats, heated with two memory functions
- Two rear seats with centre stowage inc. 12 V socket and two USB-C charging points
- Black seat belt buckles
- Child seat anchor for child seat system ISOFIX in the rear seats
- Driver and front passenger airbag with front passenger airbag deactivation
- Side airbags
- Single front armrest (with fore/aft slide) – with stowage inc. wireless phone charging, 12 V socket and two USB-C charging points
- Stowage to front doors, centre console and under centre armrest
- Single tone, three-spoke, hide and Dinamica trimmed heated steering wheel
- Steering wheel mounted gearshift paddles
- Electric tilt-and-reach adjustment steering column with memory and easy-entry functions
- Speed-specific instrument panel graphics
- Sports foot pedals
- Dinamica gear lever
- Piano Black veneer
- Metal bulls-eye vents with organ stops
- Bentley analogue clock with smooth bezel
- Lockable glove box
- Deep pile cabin carpets
- Standard carpet overmats to the front
- Boot carpet in Beluga
- Two cup holders to the front centre console
- Sun visors with illuminated vanity mirrors
- Auto-dimming rear-view mirror
- Footwell illumination and ambient lighting
- Advanced air filtration and display with particle matter sensor
- Multi-zone automatic climate control
- Air ioniser
- Boot lid down lighters
- 12 V socket in boot
- Keybox

INTERIOR

- Four occupant seating positions
- Eight interior roof colours: Beluga, Blue, Grey, Red, Saddle, Light Grey, Camel, Magnolia
- 'Speed' unique mix of Nappa leather and Dinamica to seats and lower cabin in monotone or 'Speed' unique duo tone colour combination
- Precision Diamond Quilt to seats
- 'Speed' embroidered seat emblems
- Three dimensional Precision diamond hide to door casings and rear quarter panels
- 'Speed' fascia badge
- Diamond knurling to rotary switches and column stalks

TECHNOLOGY

- Infotainment system with 12.3" high-resolution capacitive touchscreen display. Proximity sensors and hard key controls. Digital radio, HDD-Navigation, advance music interface (AMI), Bluetooth (A2DP) and Wi-Fi (uPnP) streaming
- Navigation – featuring text-to-speak, voice destination entry and 3D building display
- Wireless Apple CarPlay®*
- Wireless Android Auto*
- 60 GB solid-state drive (10 GB available user space)
- 4G LTE telephone module*
- Bentley Signature Audio
- Bluetooth and Wi-Fi audio streaming

DRIVER ASSISTANCE SYSTEMS

- Driver Assist Environmental Display
- Adaptive Cruise Assist*
- Lane Assist
- Blind Spot Warning
- Adaptive brake lights*
- Bentley Safeguard Plus*
- Swerve Assist*
- Bentley Safeguard Rear*
- Multi-collision brake*
- Emergency Assist
- Reversing camera with graphic screen representation
- 3D Surround View
- Front and Rear Park Distance Control
- Intelligent Park Assist†
- City Assist
- Manoeuvre Assist
- Turn Assist*
- Pedestrian Warning
- Extended and crash-active pedestrian protection*
- Reversing Traffic Warning

†The driver must constantly supervise the manoeuvre and be able to intervene at any time to maintain safety.
See the full details of these specifications on page 62.
NCO = No Cost Option. *Regional applicability.

Continental GTC Speed (cont.)

- Exit Warning
- Alarm and immobiliser
- Bentley GPS tracking system*

CONNECTED CAR SERVICES

- Traffic Sign Recognition*
- POI (search)*
- Online real time traffic information*
- Remote Park Assist†
- My Cabin Comfort
- Online Destination Import
- My Car Statistics
- My Battery charge
- My Bentley App Studio
- Find My Car
- My Car Status
- Activate Lights & Horn
- Lock My Car
- Perimeter Alert
- Speed Alert
- Curfew Alert
- Valet Alert
- Green Traffic Light Prediction (subject to infrastructure availability)
- Theft Alert
- Map update over the air
- Satellite Maps
- Local Hazard Information
- Online search
- Personal navigation assistant (China)
- Roadside assistance call
- Private e-Call*
- News
- Weather
- WiFi hotspot

SPECIFICATION PACKAGES

- Colour Specification
- Styling Specification – Body Coloured

OPTIONAL SPECIFICATION

BRAKES

- Front and rear brake callipers in black, with Bentley branding to front callipers
- Front and rear brake callipers in Mandarin, with Bentley branding to front callipers
- Ceramic brakes with black callipers
- Ceramic brakes with red callipers

WHEELS

- 22" Speed alloy wheel – black painted
- 22" Speed alloy wheel – dark tint
- 22" Sports alloy wheel – black painted
- 22" Sports alloy wheel – Pale Brodgar Satin
- 22" Ten swept spoke alloy wheel – grey painted and machined
- 22" Ten swept spoke alloy wheel – black painted
- Self levelling wheel badges by Mulliner
- Winter wheels and tyres
- Temporary use spare wheel for home*

EXTERIOR

- Choice of four additional exterior roof colours: Dark Brown, Claret, Dark Grey Metallic and Tweed
- Wind deflector
- Additional exterior paint colours

INTERIOR

- One monotone and four duo-tone colour combinations
- Additional veneers: Burr Walnut by Mulliner, Dark Fiddleback Eucalyptus (NCO), Dark Stained Burr Walnut (NCO), Liquid Amber, open pore Crown Cut Walnut, open pore Dark Burr Walnut, open pore Koa, Crown Cut Walnut
- Piano veneers: Linen, Cricket Ball, Imperial Blue, Burnt Oak, Gravity Grey By Mulliner
- Unique centre console finish in 'Côtes de Genève'
- Choice of dual veneers by Mulliner applied to the upper fascia, with Grand Black veneer on the lower fascia and centre console
- Carbon Fibre to fascia and door waistrails, with Piano Black on the centre console

- Engine Turned Aluminium to centre console – Dark Tint
- Engine Turned Aluminium to fascia and door waistrails – Dark Tint
- Diamond Brushed Aluminium to fascia and door waistrails - Dark Tint
- Chrome or coloured-matched pinstripe to fascia and door waistrails
- Diamond knurling to metal bulls-eye vents, organ stops and Bentley analogue clock
- Neck warmer
- Heated front armrest
- Embroidered Bentley emblems to headrests (NCO)
- Deep pile overmats to front
- Contrast binding to deep pile overmats (front)
- Contrast stitching to seat and cabin trim including steering wheel stitching
- Seat piping with contrast stitching including steering wheel stitching
- Hand cross stitching by Mulliner
- Heated, duo-tone, 3-spoke, hide-trimmed steering wheel
- Heated, duo-tone, 3-spoke indented hide-trimmed steering wheel
- Heated, single tone, 3-spoke, hide-trimmed steering wheel
- Heated, single tone, 3-spoke indented hide-trimmed steering wheel
- Contrast steering wheel spokes and gear lever by Mulliner
- Contrast seatbelts by Mulliner

CONVENIENCE

- Remote controlled garage door opener*
- Valet key
- First aid kit and warning triangle
- Tool kit and jack*

TECHNOLOGY

- Bentley Rotating Display
- Naim for Bentley premium audio system
- Bang & Olufsen for Bentley audio system
- LED Welcome Lamps by Mulliner
- Animated Welcome Lamps by Mulliner
- Head-Up Display*

SPECIFICATION PACKAGES

- Blackline Specification
- Leather Specification
- Dark Chrome Interior Specification
- Diamond Knurling Specification††
- Front Seat Comfort Specification
- Wellness Seating
- Mood Lighting Specification
- Mulliner Colour Specification
- Smoker's Specification
- Touring Specification*

See the full details of these specifications on page 62.
 NCO = No Cost Option. *Regional applicability.
 ††Not available with Dark Chrome Interior Specification.

Continental GTC Mulliner

STANDARD SPECIFICATION

BRAKES

- Front vented 420 x 40 mm disc brakes with Bentley branded black brake callipers
- Rear vented 380 x 30 mm disc brakes with black brake callipers
- Brake pad wear indicator
- Electronic parking brake with drive away assist

WHEELS

- 22" Mulliner alloy wheel – painted and polished with self-levelling wheel badge
- 22" Summer tyre with Pirelli Noise Cancellation System
- Electronic Tyre Pressure Monitoring System (TPMS)
- Tyre inflation kit

SUSPENSION

- Bentley Performance Active Chassis with sports steering and sports damper calibration
- Two chamber, two valve air suspension with Continuous Damping Control (CDC)
- Electronic Stability Control (ESC) with Traction Control (TCS)/Anti-lock Braking System (ABS)/ Electronic Brake Force Distribution (EBD)/ Hydraulic Brake Assist (HBA)/ Drag Torque Control (MSR)
- Torque vectoring by electronic differential (eLSD)
- Dynamic ride-height control (auto-adjusts at speed) and ground clearance function
- Bentley Dynamic Ride
- Electronic all-wheel steering
- Drive Dynamics Control
- Launch Control
- Eight speed dual clutch transmission
- Active all-wheel drive

EXTERIOR

- Automatically folding four layer insulated fabric roof in three colours: Black, Blue, Grey
- Choice of seven exterior paint colours
- Mulliner floating-diamond radiator grille – bright

- Bright chromed matrix style grille to lower bumper apertures
- Mulliner badge
- Jewel fuel filler and oil caps
- Panoramic glass sunroof
- Chrome Bentley wing badges to bonnet and boot
- Chrome 'BENTLEY' lettering on the boot
- Chrome exterior brightware
- Satin silver door mirror caps
- Electrically adjustable door mirrors with heating, power fold, auto-dimming, memory and dip on reverse functions
- Illuminated 'Bentley' sill and stainless steel treadplates with 'Handcrafted in Crewe, England'
- Full LED matrix headlamps with high-beam assist and welcome and coming home animation
- Full LED tail lamps with red lens and 'wellness' welcome and coming home animation
- Acoustic, heat-insulating, front screen
- Acoustic side glass with IR barrier*
- Heated rear screen
- Sports exhaust
- Slashed oval exhaust finishers in bright chrome
- Rain-sensing windscreen wipers
- Hands free boot
- Power latches to the doors and boot
- Keyless entry and ignition
- Acoustic Vehicle Alerting System (AVAS)
- Hidden antennae
- Three dimensional Precision diamond hide to door casings and rear quarter panels
- 'Mulliner' fascia badge
- Diamond knurling to rotary switches and column stalks
- Front seats – electric 24-way adjustment with heating, ventilation, massage, adjustable bolster function and two memory positions
- Two rear seats with centre stowage inc. 12 V socket and two USB-C charging points
- Seatbelts colour-matched to hide colour, with hide-trimmed buckles
- Driver and front passenger airbag with front passenger airbag deactivation
- Side airbags
- Child seat anchor for child seat system ISOFIX in the rear seats
- Single front armrest (with fore/aft slide) – with stowage inc. wireless phone charging, 12 V socket and two USB-C charging points
- Stowage to front doors, centre console and under centre armrest
- Heated, duo-tone, 3-spoke, hide-trimmed steering wheel
- Steering wheel mounted gearshift paddles
- Electric tilt-and-reach adjustment steering column with memory and easy-entry functions
- Mulliner instrument panel graphics
- Sports foot pedals
- Leather-trimmed gear lever
- Grand Black veneer with Mulliner overlays
- Diamond Milled technical finish on the centre console
- Metal bulls-eye vents with organ stops
- Mulliner unique clock
- Lockable glove box
- Deep pile cabin carpets
- Mulliner overmats with accent micro piping
- Boot carpet in Beluga
- Two cup holders to the front centre console
- Sun visors with illuminated vanity mirrors
- Auto-dimming rear-view mirror
- Footwell illumination and ambient lighting

INTERIOR

- Four occupant seating positions
- Eight interior roof colours: Beluga, Blue, Grey, Red, Saddle, Light Grey, Camel, Magnolia
- Mulliner colour split including piping
- Eight suggested Mulliner colour configurations, each in tri-colour combination
- Nappa and Olive Tanned leather interior
- Precision Diamond Quilt pattern with Mulliner contrast stitch to seats
- Contrast and accent stitching
- 'Mulliner' embroidered seat emblems

- Advanced air filtration and display with particle matter sensor
- Multi-zone automatic climate control
- Air ioniser
- Boot lid down lighters
- 12 V socket in boot
- Mulliner keybox matched to interior colourway

TECHNOLOGY

- Infotainment system with 12.3" high-resolution capacitive touchscreen display. Proximity sensors and hard key controls. Digital radio, HDD-Navigation, advance music interface (AMI), Bluetooth (A2DP) and Wi-Fi (uPnP) streaming
- Navigation – featuring text-to-speak, voice destination entry and 3D building display
- Wireless Apple CarPlay®*
- Wireless Android Auto*
- Bentley Rotating Display
- Animated Welcome Lamps by Mulliner
- 60 GB solid-state drive (10 GB available user space)
- 4G LTE telephone module*
- Bentley Signature Audio
- Bluetooth and Wi-Fi audio streaming

DRIVER ASSISTANCE SYSTEMS

- Driver Assist Environmental Display
- Adaptive Cruise Assist with Lane Guidance*
- Predictive Adaptive Cruise Assist*
- Night Vision
- Head-Up Display*
- Lane Assist
- Blind Spot Warning
- Adaptive brake lights*
- Bentley Safeguard Plus*
- Swerve Assist*
- Bentley Safeguard Rear*
- Multi-collision brake*

†The driver must constantly supervise the manoeuvre and be able to intervene at any time to maintain safety. See the full details of these specifications on page 62. NCO = No Cost Option. *Regional applicability. Please visit My Bentley support site for details.

Continental GTC Mulliner (cont.)

- Emergency Assist
- Reversing camera with graphic screen representation
- 3D Surround View
- Front and Rear Park Distance Control
- Intelligent Park Assist†
- City Assist
- Manoeuvre Assist
- Turn Assist*
- Pedestrian Warning
- Extended and crash-active pedestrian protection*
- Reversing Traffic Warning
- Exit Warning
- Alarm and immobiliser
- Bentley GPS tracking system*

CONNECTED CAR SERVICES

- Traffic Sign Recognition*
- POI (search)*
- Online real time traffic information*
- Remote Park Assist†
- My Cabin Comfort
- Online Destination Import
- My Car Statistics
- My Battery charge
- My Bentley App Studio
- Find My Car
- My Car Status
- Activate Lights & Horn
- Lock My Car
- Perimeter Alert
- Speed Alert
- Curfew Alert
- Valet Alert
- Green Traffic Light Prediction (subject to infrastructure availability)
- Theft Alert
- Map update over the air
- Satellite Maps

- Local Hazard Information
- Online search
- Personal navigation assistant (China)
- Roadside assistance call
- Private e-Call*
- News
- Weather
- WiFi hotspot

SPECIFICATION PACKAGES

- Colour Specification
- Front Seat Comfort Specification
- Mood Lighting Specification
- Touring Specification
- Wellness Seating – Front

OPTIONAL SPECIFICATION

BRAKES

- Front and rear brake callipers in red, with Bentley branding to front callipers
- Front and rear brake callipers in Mandarin, with Bentley branding to front callipers
- Ceramic brakes with black callipers
- Ceramic brakes with red callipers

WHEELS

- 22" Mulliner alloy wheel – black with self-levelling wheel badge (NCO)
- 22" Mulliner alloy wheel – black and polished with self-levelling wheel badge (NCO)
- Winter wheels and tyres
- Temporary use spare wheel for home*

EXTERIOR

- Choice of four additional exterior roof colours: Dark Brown, Claret, Dark Grey Metallic and Tweed
- Wind deflector
- Additional exterior paint colours
- Black and body coloured Mulliner door mirror caps

INTERIOR

- Additional veneers: Burr Walnut by Mulliner, Crown Cut Walnut, Dark Fiddleback Eucalyptus, Dark Stained Burr Walnut, Liquid Amber, open pore Crown Cut Walnut, open pore Dark Burr Walnut, open pore Koa, Piano Black (all veneers NCO)
- Piano veneers: Linen, Cricket Ball, Imperial Blue, Burnt Oak, Gravity Grey by Mulliner
- Unique centre console finish in 'Côte's de Genève'
- Choice of dual veneers by Mulliner applied to the upper fascia, with Grand Black veneer on the lower fascia and centre console (all NCO)
- Carbon Fibre to fascia and door waistrails with Piano Black centre console (NCO)
- Engine Turned Aluminium to centre console – Dark Tint (NCO)
- Engine Turned Aluminium to fascia and door waistrails – Dark Tint (NCO)
- Diamond Brushed Aluminium to fascia and door waistrails – Dark Tint (NCO)
- One monotone and four duo-tone colour combinations (NCO)
- Diamond knurling to metal bulls-eye vents, organ stops and Mulliner analogue clock
- Embroidered 'Bentley' emblems to headrests (NCO)
- Seat piping with contrast stitching including steering wheel stitching
- Hand cross stitching by Mulliner
- Heated, single tone, 3-spoke, hide-trimmed steering wheel (NCO)
- Heated, single-tone, 3-spoke indented hide-trimmed steering wheel (NCO)
- Heated, duo-tone, 3-spoke indented hide-trimmed steering wheel (NCO)
- Steering wheel vertical spokes and gear lever in contrast colour by Mulliner
- Contrast seatbelts by Mulliner

CONVENIENCE

- Remote controlled garage door opener*
- Valet key
- First aid kit and warning triangle
- Tool kit and jack*

TECHNOLOGY

- Naim for Bentley premium audio system
- Bang & Olufsen for Bentley audio system

SPECIFICATION PACKAGES

- Diamond Knurling Specification
- Dark Chrome Interior Specification
- Mulliner Alternative Interior Specification (NCO)
- Mulliner Bespoke Specification
- Mulliner Blackline Specification
- Mulliner Colour Specification
- Smoker's Specification
- Styling Specification – Body Coloured

See the full details of these specifications on page 62.
NCO = No Cost Option. *Regional applicability.
Please visit My Bentley support site for details.

High Performance Hybrid powertrain: Continental GTC & Continental GTC Azure



Engine: 4.0 L V8 PHEV engine
 Max power: 671 bhp / 680 PS / 500 kW
 (Combined System Power)
 Max torque: 686 lb ft / 930 Nm
 (Combined System Torque)
 Transmission: 8-speed dual clutch
 Driveline: Active all-wheel drive
 Top speed: 168 mph / 270 km/h
 0-60 mph / 0-100 km/h: 3.8 / 3.9 seconds
 Wheelbase: 2,848 mm / 112.1 inch
 Overall length: 4,895 mm / 192.7 inch
 Width (including mirrors): 2,187 mm / 86.1 inch
 Overall height: 1,392 mm / 54.8 inch
 Fuel tank: 80 litres / 18 gallons / 21 US gallons
 Boot volume: 134 litres / 4.73 cu ft
 Unladen weight (EU): 2,636 kg
 Gross weight (EU): 3,090 kg

Fuel consumption (WLTP Cycle)

Combined (UK): TBC
 CO₂ combined: TBC
 Driving range: TBC
 E-range (EAER): TBC

Fuel consumption

(NEDC Cycle WLTP Equivalent – Europe)
 Combined (UK): TBC
 CO₂ Emissions: TBC
 E-range: TBC

Fuel consumption (NEDC Cycle – ROW)

Urban: TBC
 Extra Urban: TBC
 Combined: TBC
 CO₂ Emissions: TBC

Fuel consumption (EPA Cycle)

City driving (US): TBC
 Highway driving (US): TBC
 Combined (US): TBC

CO₂ Emissions and fuel consumption data for EU27 is pending, subject to EU Type Approval.
 Figures shown are subject to final certification.
 Your mileage will vary and depends on several factors including your driving habits and vehicle condition.

Ultra Performance Hybrid powertrain: Continental GTC Speed & Continental GTC Mulliner



Engine: 4.0 L V8 PHEV engine
Max power: 771 bhp / 782 PS / 575 kW
(Combined System Power)
Max torque: 738 lb ft / 1000 Nm
(Combined System Torque)
Transmission: 8-speed dual clutch
Driveline: Active all-wheel drive
Top speed: 177 mph / 285 km/h
0-60 mph / 0-100 km/h: 3.2 / 3.4 seconds
Wheelbase: 2,848 mm / 112.1 inch
Overall length: 4,895 mm / 192.7 inch
Width (including mirrors): 2,187 mm / 86.1 inch
Overall height: 1,392 mm / 54.8 inch
Fuel tank: 80 litres / 18 gallons / 21 US gallons
Boot volume: 134 litres / 4.73 cu ft
Unladen weight (EU): 2,636 kg
Gross weight (EU): 3,090 kg

Fuel consumption (WLTP Cycle)

Combined (UK): TBC
CO₂ combined: TBC
Driving range: TBC
E-range (EAER): TBC

Fuel consumption

(NEDC Cycle WLTP Equivalent – Europe)
Combined (UK): TBC
CO₂ Emissions: TBC
E-range: TBC

Fuel consumption (NEDC Cycle – ROW)

Urban: TBC
Extra Urban: TBC
Combined: TBC
CO₂ Emissions: TBC

Fuel consumption (EPA Cycle)

City driving (US): TBC
Highway driving (US): TBC
Combined (US): TBC

CO₂ Emissions and fuel consumption data for EU27 is pending, subject to EU Type Approval.
Figures shown are subject to final certification.
Your mileage will vary and depends on several factors including your driving habits and vehicle condition.

Tyre applicability.

Please click on tyre specification for full product information and EPREL energy labels.

Size	Make	Tyre specification	Continental GTC	Continental GTC Azure	Continental GTC Speed	Continental GTC Mulliner
			V8 hybrid	V8 hybrid	V8 hybrid	V8 hybrid
21"	Pirelli	WINTER SOTTO ZERO 3 265/40 R21 (105W) XL (B) – (FRONT)	●	●	●	●
		WINTER SOTTO ZERO 3 305/35 R21 (109W) XL (B) – (REAR)	●	●	●	●
		PZERO 265/40 ZR21 (105Y) XL (B) – (FRONT)	●	●		
		PZERO 305/35 ZR21 (109Y) XL (B) – (REAR)	●	●		
22"	Pirelli	PZERO 275/35R22 104W XL A/S ncs (BH) – (FRONT)	●	●	●	●
		PZERO 315/30R22 107W XL A/S ncs (BH) – (REAR)	●	●	●	●
		PZERO 275/35ZR22 (104Y) XL ncs (BH) – (FRONT)	●	●	●	●
		PZERO 315/30ZR22 (107Y) XL ncs (BH) – (REAR)	●	●	●	●





The model presented in this brochure includes optional specifications. Specifications, standard equipment, options, fabrics and colours are subject to change without notice. Your Bentley Retailer will always have the latest information. The name 'Bentley' and the 'B' wings design are registered trademarks of Bentley Motors Limited. Bentley Motors Limited acknowledges the rights of third parties in other trademarks. The models shown may include European and non-European specifications. © April 2025.

